

RETAIL/OFFICE
LEASE



ALDERWOOD EAST SHOPPING CENTER

18910 - 18930 28th Ave W | Lynnwood, WA

Jack Rosen
425.289.2221
jack@rosenharbottle.com

Grant Rubenstein
425.289.2220
grant@rosenharbottle.com

425.454.3030
rosenharbottle.com

PO Box 5003
Bellevue, WA 98009 - 5003



HIGH-EXPOSURE OFFICE & RETAIL SPACES ACROSS FROM ALDERWOOD MALL

1,075 SF - 1,550 SF Available

\$40.00/SF, Gross

PROPERTY FEATURES:

- High Exposure Frontage on Alderwood Mall Blvd Near I-5
- Heavy Foot Traffic Location
- 24 Hour Fitness Anchored Center
- Other Tenants Include Daiso, Plato's Closet, Chop It Up Barbershop, & DXL
- 218,969 Cars per Day on I-5
- 21,026+ Cars per Day on 28th Avenue

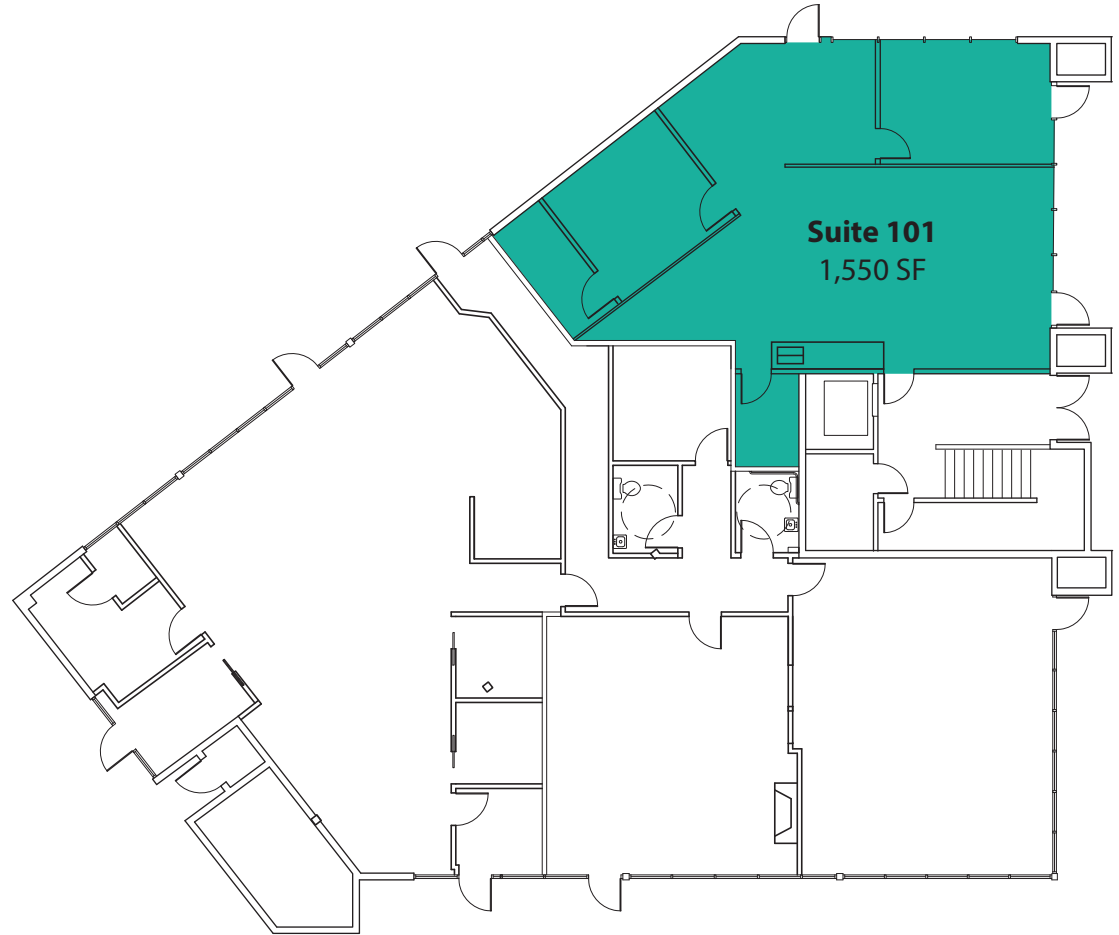


The information provided herein has been obtained from sources believed to be reliable, but no representation or warranty, express or implied, is made with respect to the accuracy or completeness of any such information. Each prospective buyer or tenant should independently investigate, evaluate and verify all information provided herein and any other matters deemed material. Please consult your attorney, tax advisor or other professional advisor. The terms of sale or lease set forth herein are subject to change or withdrawal at any time and without notice.

18910 - FIRST LEVEL FLOOR PLAN

SUITE 101 FEATURES

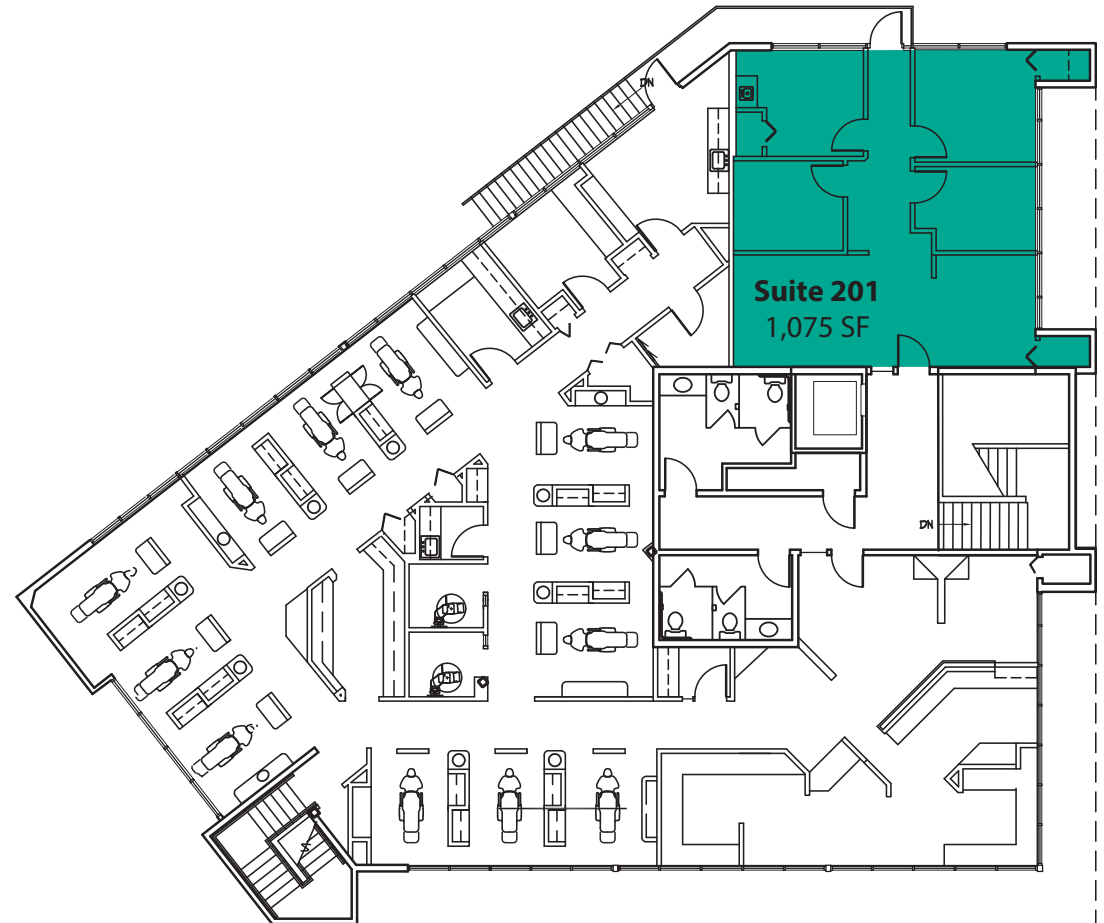
- Available December 1st, 2024
- 1,550 SF
- \$40.00/SF, Gross
- First Floor Open Office/Retail Space
- 2 Private Offices
- Kitchenette



18910 - SECOND LEVEL FLOOR PLAN

SUITE 201 FEATURES

- Available with 30 Days' Notice
- 1,075 SF
- \$40.00/SF, Gross
- Second Floor Office Space
- 4 Private Offices
- Reception Area
- Direct and Lobby Entrances





The information provided herein has been obtained from sources believed to be reliable, but no representation or warranty, express or implied, is made with respect to the accuracy or completeness of any such information. Each prospective buyer or tenant should independently investigate, evaluate and verify all information provided herein and any other matters deemed material. Please consult your attorney, tax advisor or other professional advisor. The terms of sale or lease set forth herein are subject to change or withdrawal at any time and without notice.

LOCATION MAP

