

FOR LEASE

RAINIER CORPORATE PARK

2505 FRANK ALBERT RD E, FIFE, WA



11,565 - 26,784 SF available now

Excellent access to I-5 and Port of Tacoma

Concrete tilt construction with dock high and level loading

Pleasant corporate environment

No local B & O Tax

CAM charges are competitive \$0.16 PSF, per month

Three phase power

Ample employee parking

Call brokers for lease rates

SUITE AVAILABILITY

Suite #	Warehouse SF	Office SF
B103*	11,565 SF	1,221 SF
B107A*	15,219 SF	397 SF

TY CLARKE

253.722.1419

ty.clarke@kidder.com

HUNTER CLARKE

253.722.1454

hunter.clarke@kidder.com

TODD CLARKE

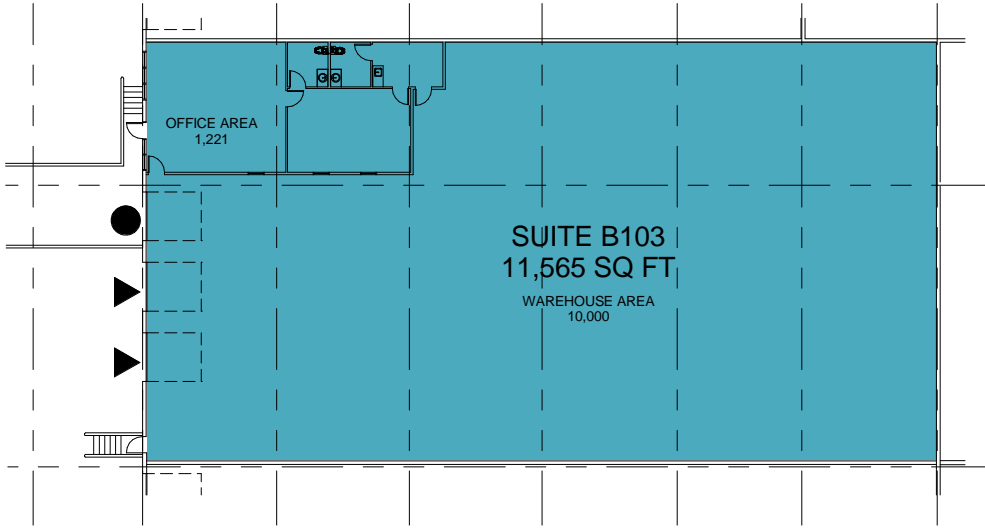
253.722.1422

todd.clarke@kidder.com

KIDDER.COM

This information supplied herein is from sources we deem reliable. It is provided without any representation, warranty, or guarantee, expressed or implied as to its accuracy. Prospective Buyer or Tenant should conduct an independent investigation and verification of all matters deemed to be material, including, but not limited to, statements of income and expenses. Consult your attorney, accountant, or other professional advisor.

**km Kidder
Mathews**



B103

AVAILABLE

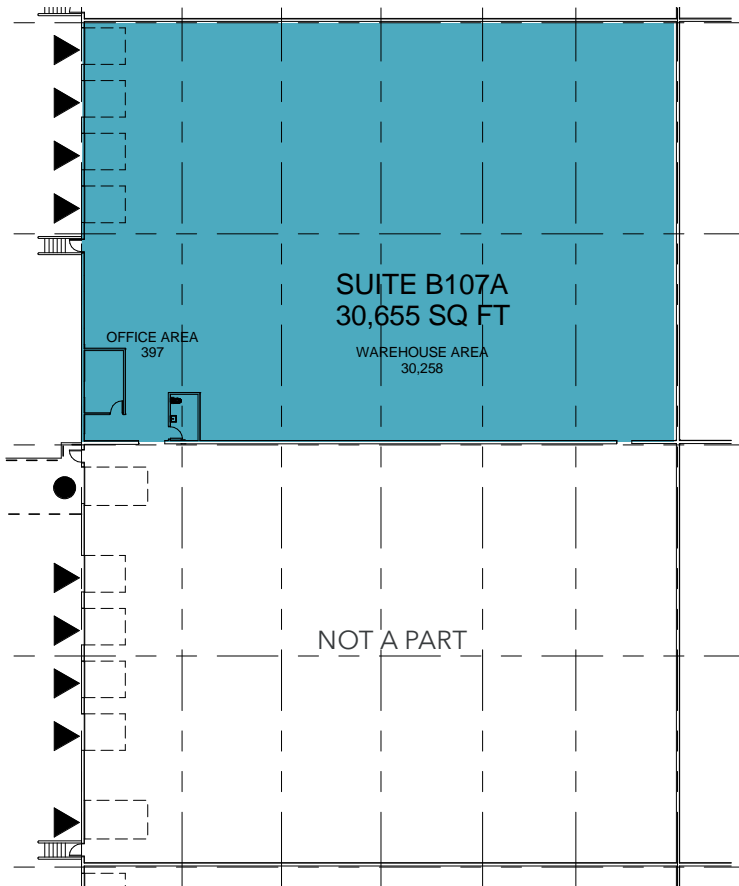
11,565

TOTAL SF

1,221

OFFICE SF

Spaces can be combined



B107A

AVAILABLE

15,219

TOTAL SF

397

OFFICE SF