



MORRISON BUILDING

17455 68TH AVENUE NE
KENMORE, WA 98028

PACIFIC ASSET ADVISORS, INC.

LISTING DETAILS



RENTABLE SF
1,014 SF

\$24/SF
GROSS RENT

ADDRESS: 17455 68th Avenue NE
Kenmore, WA 98028

SPACE AVAILABLE: 204 (1,014 SF, Available 9/1)

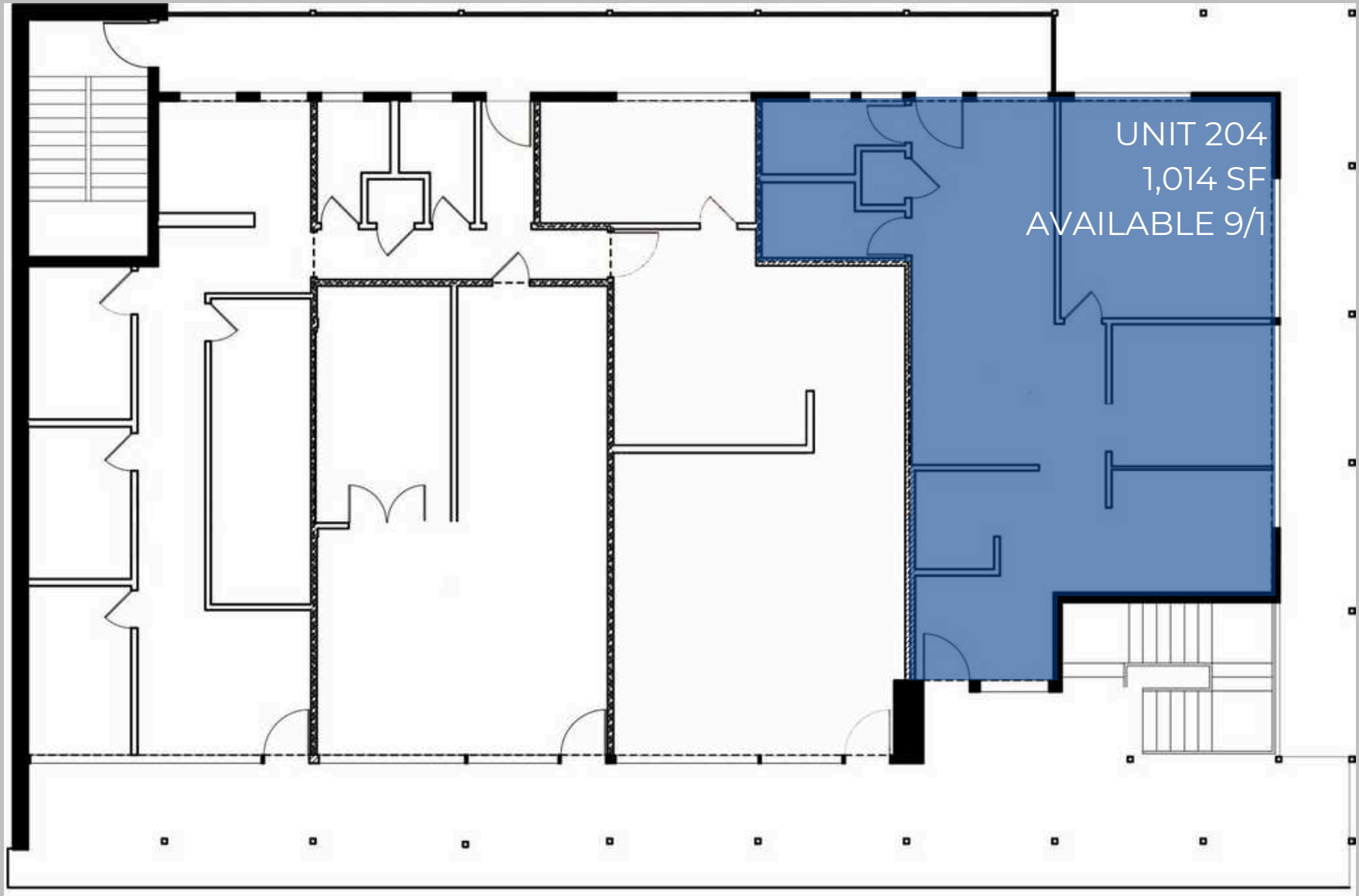
MAJOR TENANTS: Kenmore Camera,
Evergreen Health,
Seaplane...

	1 MILE	3 MILES	5 MILES
MEDIAN INCOME:	\$141,849	\$144,073	\$133,171
TOTAL POPULATION:	11,721	107,993	344,943
DAYTIME POPULATION:	6,177	47,057	192,616

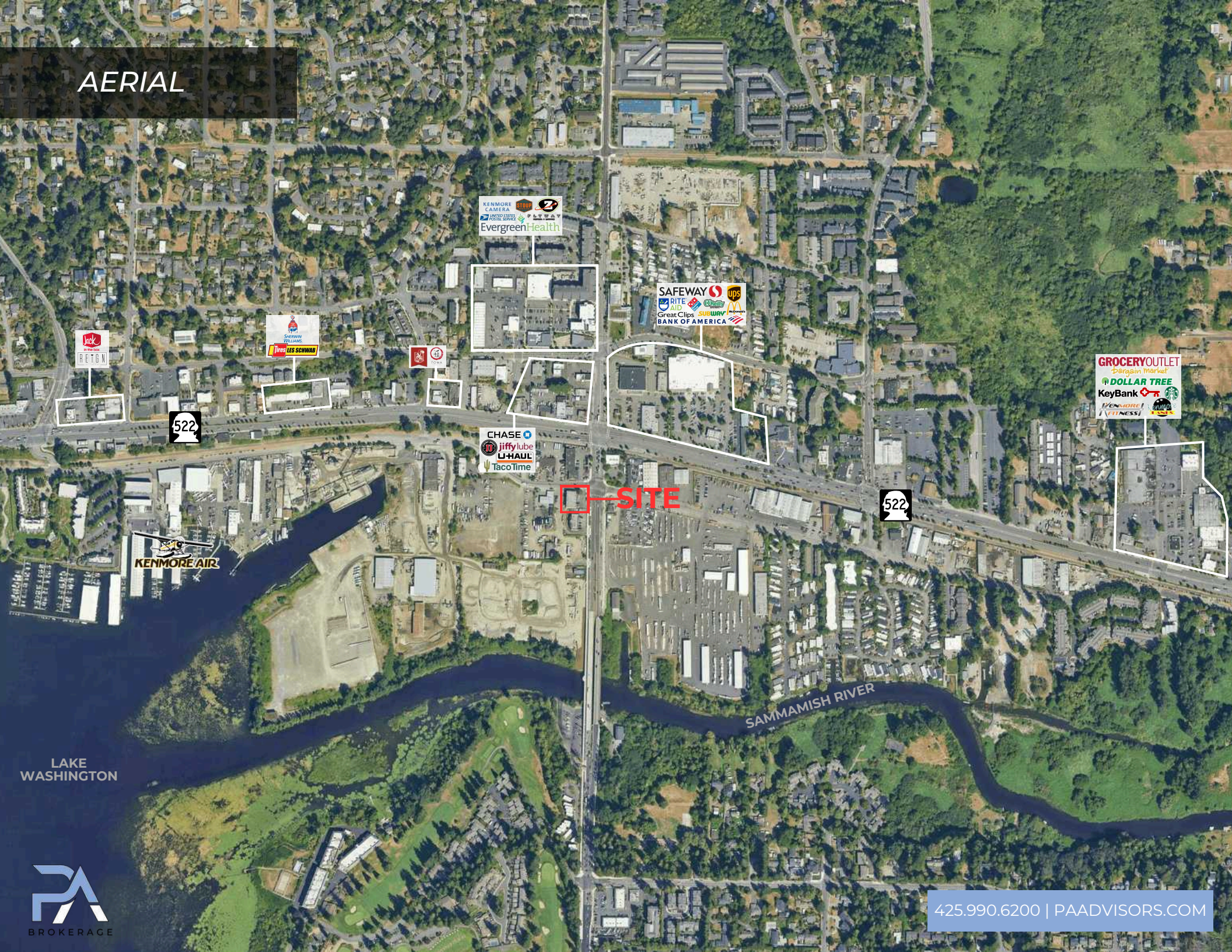
425.990.6200 | PAADVISORS.COM

SITE PLAN

SECOND FLOOR



AERIAL



KENMORE CAMERA
STUMP
POSTAL SERVICE
EvergreenHealth

SAFeway ups
RITE AID
Great Clips
SUBWAY
BANK OF AMERICA

CHASE
jiffylube
U-HAUL
TacoTime

GROCERYOUTLET
Bargain Market
DOLLAR TREE
KeyBank
STARBUCKS
KENMORE FITNESS

SITE

522

522

KENMORE AIR

SAMMAMISH RIVER

LAKE WASHINGTON



425.990.6200 | PAADVISORS.COM

CONTACT



RYAN CORNISH
SENIOR VICE PRESIDENT
PARTNER
206.375.6142
RYAN@PAADVISORS.COM

PACIFIC ASSET ADVISORS, INC.
THE PREMIER CHOICE OF THE PACIFIC NORTHWEST

14205 SE 36TH ST, SUITE 215, BELLEVUE, WA 98006