



LEASE

Prestige Building

115 EAST HIGHLAND AVENUE

Hermiston, OR 97838

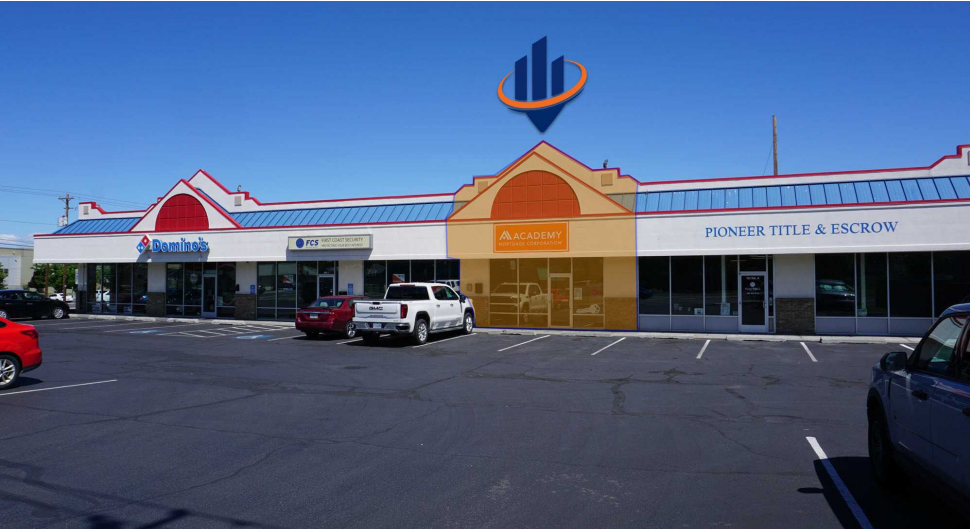
PRESENTED BY:

KEN DAVIS

O: 509.949.0860

ken.davis@svn.com

PROPERTY SUMMARY



OFFERING SUMMARY

| | |
|----------------|---------------------|
| LEASE RATE: | \$16.00 SF/yr (NNN) |
| AVAILABLE SF: | 1,200 SF |
| LOT SIZE: | 0.54 Acres |
| BUILDING SIZE: | 7,000 SF |

KEN DAVIS
O: 509.949.0860
ken.davis@svn.com



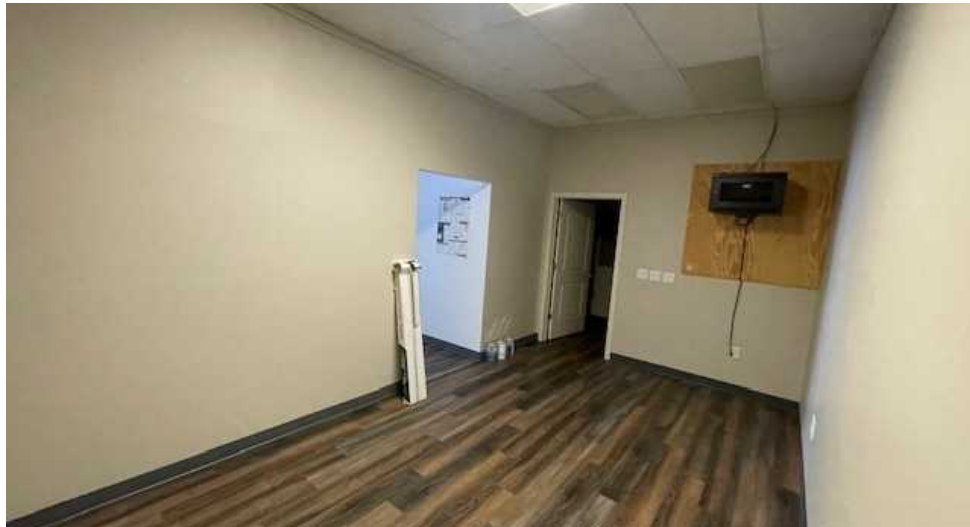
PROPERTY DESCRIPTION

Introducing a prime leasing opportunity at 115 East Highland Avenue, Hermiston, OR. This beautifully updated space offers 1,200 SF of versatile space, including one ADA restroom, ideal for accommodating diverse business needs. Boasting an excellent location, tenants will appreciate the convenience of ample parking and proximity to essential services. With modern upgrades and a strategic setting, this property presents an impressive opportunity for businesses seeking a well-appointed, high-traffic location in Hermiston. Don't miss out on the chance to secure this standout space for your enterprise.

LOCATION DESCRIPTION

Discover the allure of Hermiston, Oregon, an ideal locale for your office space. Enjoy easy access to local amenities like the Hermiston Plaza, with its diverse dining options and retail stores. The area is also home to Sunset Park, offering peaceful green spaces and tranquil surroundings for lunchtime strolls. For outdoor enthusiasts, the nearby Hat Rock State Park provides a scenic escape and opportunities for recreational activities. With its convenient location and proximity to essential services and attractions, the Prestige Building in Hermiston, OR, offers a perfect blend of work and leisure opportunities for office tenants.

ADDITIONAL PHOTOS



KEN DAVIS
O: 509.949.0860
ken.davis@svn.com

LOCATION MAP



KEN DAVIS
O: 509.949.0860
ken.davis@svn.com

DEMOGRAPHICS MAP & REPORT

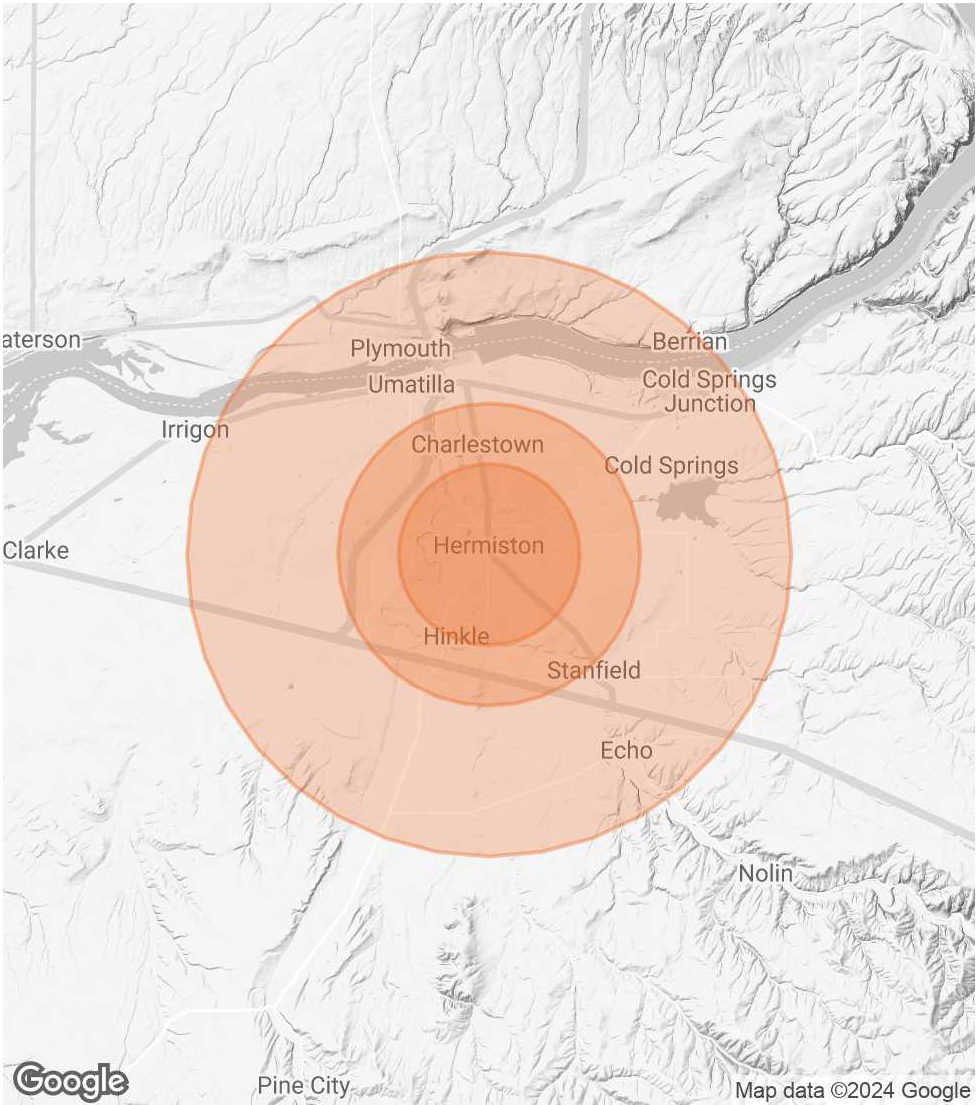
POPULATION 3 MILES 5 MILES 10 MILES

| | | | |
|----------------------|--------|--------|--------|
| TOTAL POPULATION | 24,913 | 29,822 | 42,942 |
| AVERAGE AGE | 36 | 37 | 37 |
| AVERAGE AGE (MALE) | 35 | 36 | 37 |
| AVERAGE AGE (FEMALE) | 37 | 38 | 38 |

HOUSEHOLDS & INCOME 3 MILES 5 MILES 10 MILES

| | | | |
|---------------------|-----------|-----------|-----------|
| TOTAL HOUSEHOLDS | 8,509 | 10,254 | 14,120 |
| # OF PERSONS PER HH | 2.9 | 2.9 | 3 |
| AVERAGE HH INCOME | \$84,520 | \$85,413 | \$82,758 |
| AVERAGE HOUSE VALUE | \$304,297 | \$307,166 | \$300,747 |

Demographics data derived from AlphaMap



KEN DAVIS
O: 509.949.0860
ken.davis@svn.com