

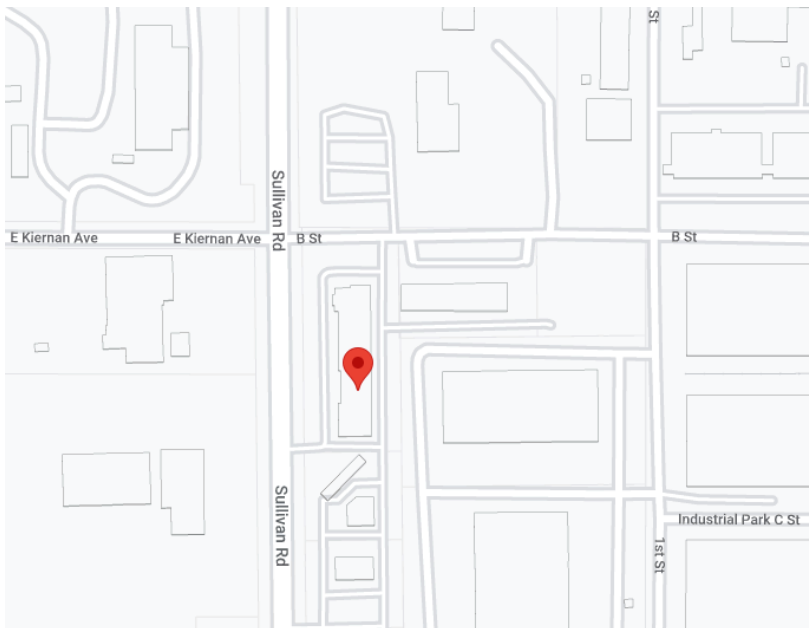
For Sublease

±3,200 SF Industrial Space

3808 N Sullivan Rd, Bldg 12,
Suite Q, Spokane, WA

Property specifications

- Warehouse: 2,580 SF
- Office: 620 SF
- LED: 8/2025
- 1 Dock Door: 12' x 12'
- Clear height: 18.5' → 25'



Michael Sharapata

Senior Managing Director

+1 509 822 0088

michael.sharapata@jll.com

Lic # 26565

Jared Smith

Vice President

+1 509 505 7459

j.smith@jll.com

Lic # 20118285



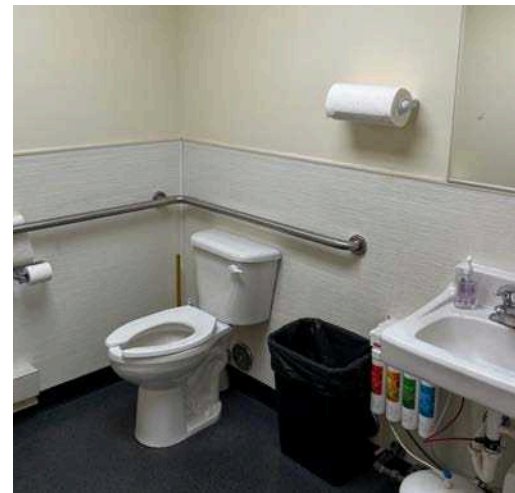
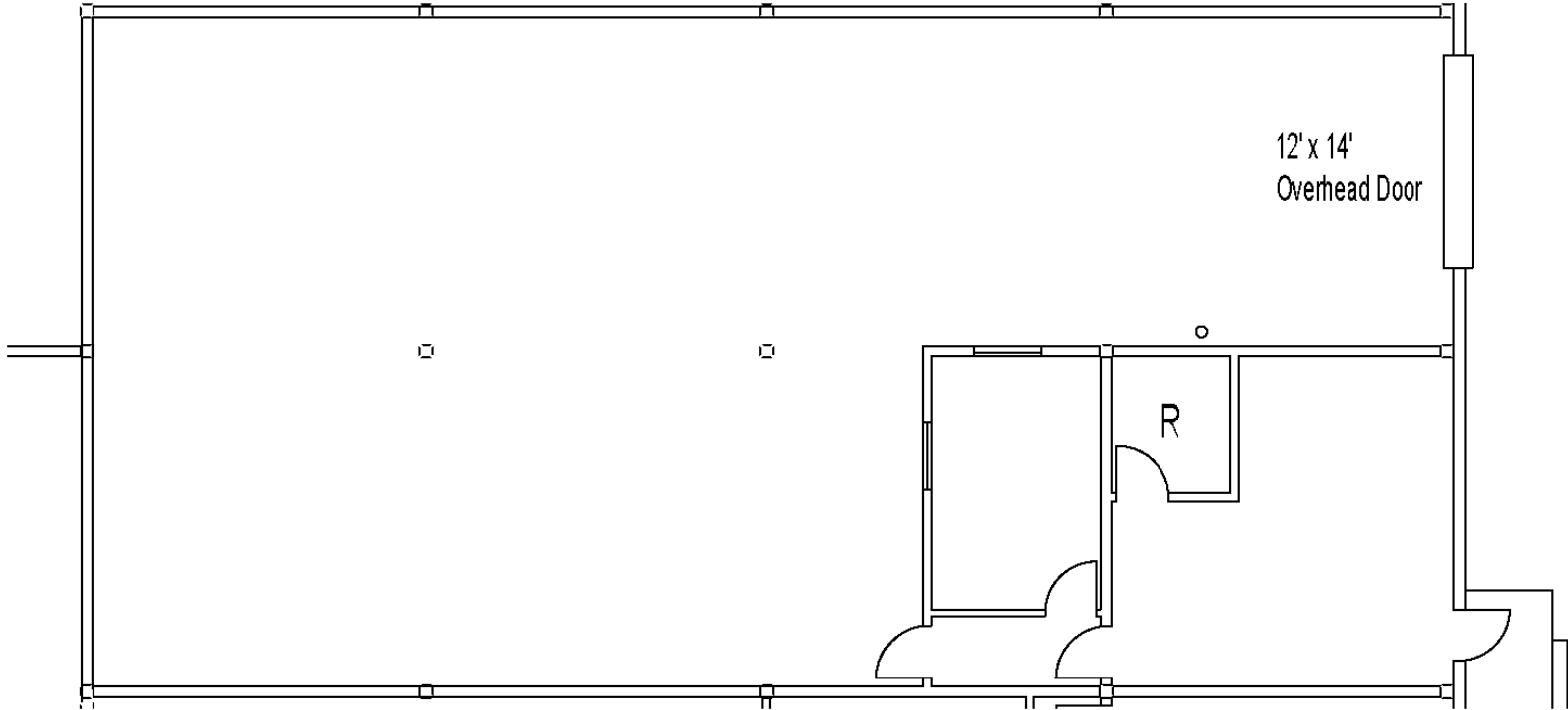
Jones Lang LaSalle Americas, Inc. License #: C0508577000

For Sublease

±3,200 SF Industrial Space

Property specifications

- Warehouse: 2,580 SF
- Office: 620 SF
- LED: 8/2025
- 1 Dock Door: 12' x 12'
- Clear height: 18.5' → 25'

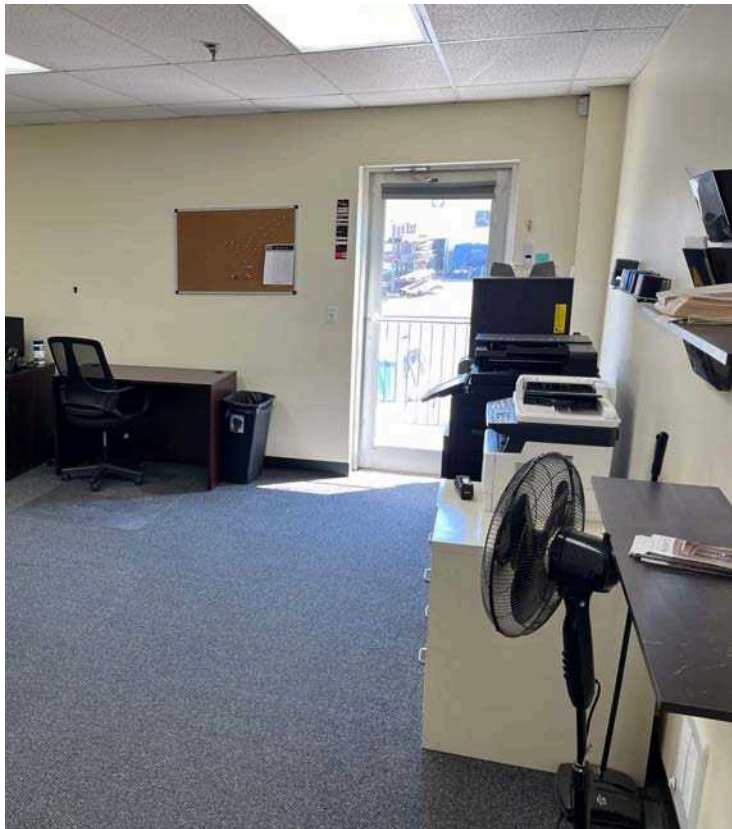


For Sublease

±3,200 SF Industrial Space

Property specifications

- Warehouse: 2,580 SF
- Office: 620 SF
- LED: 8/2025
- 1 Dock Door: 12' x 12'
- Clear height: 18.5' → 25'



Michael Sharapata

Senior Managing Director

+1 509 822 0088

michael.sharapata@jll.com

Lic # 26565

Jared Smith

Vice President

+1 509 505 7459

j.smith@jll.com

Lic # 20118285



Although information has been obtained from sources deemed reliable, neither Owner nor JLL makes any guarantees, warranties or representations, express or implied, as to the completeness or accuracy as to the information contained herein. Any projections, opinions, assumptions or estimates used are for example only. There may be differences between projected and actual results, and those differences may be material. The Property may be withdrawn without notice. Neither Owner nor JLL accepts any liability for any loss or damage suffered by any party resulting from reliance on this information. If the recipient of this information has signed a confidentiality agreement regarding this matter, this information is subject to the terms of that agreement. ©2023 Jones Lang LaSalle IP, Inc. All rights reserved.