



FOR LEASE

# Fairway Center

14220-14240 INTERURBAN AVENUE S, TUKWILA, WA



High-quality office space

**BRIAN CLAPP**  
206.248.7316  
[brian.clapp@kidder.com](mailto:brian.clapp@kidder.com)

**TODD BATTISON**  
206.296.9621  
[todd.battison@kidder.com](mailto:todd.battison@kidder.com)

**SPENCER CLAPP**  
206.248.7427  
[spencer.clapp@kidder.com](mailto:spencer.clapp@kidder.com)

**Kidder  
Mathews**

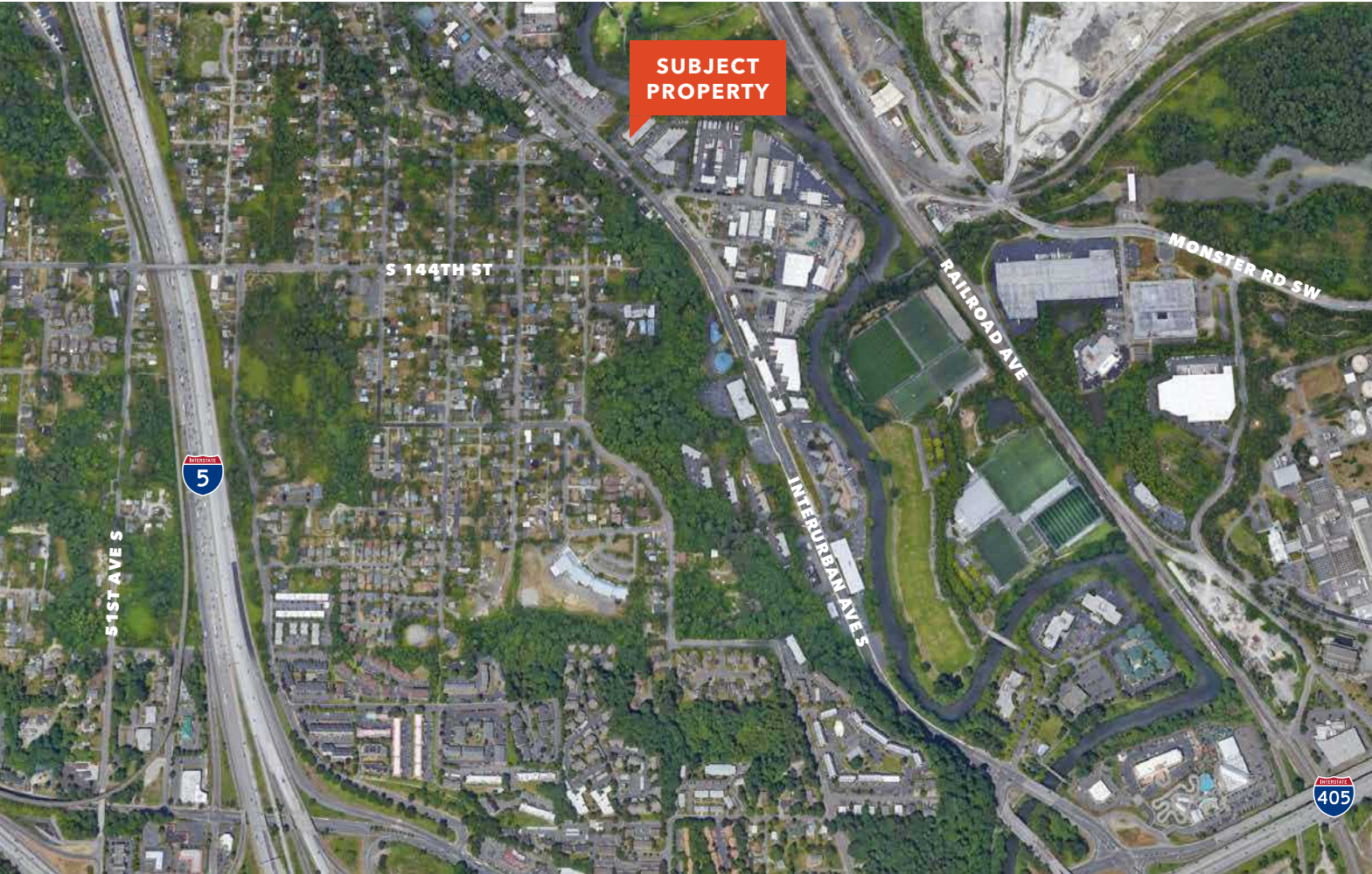
This information supplied herein is from sources we deem reliable. It is provided without any representation, warranty, or guarantee, expressed or implied as to its accuracy. Prospective Buyer or Tenant should conduct an independent investigation and verification of all matters deemed to be material, including, but not limited to, statements of income and expenses. Consult your attorney, accountant, or other professional advisor.

**KIDDER.COM**

**FOR LEASE**

# Fairway Center

14220-14240 INTERURBAN AVENUE S, TUKWILA, WA



Excellent location provides access to I-405, I-5 and only five minutes to SeaTac Airport

Metro bus stop adjacent to property and minutes to the Link Light Rail station on International Blvd

Fitness center and showers on-site

Interurban Trail access

Abundant free parking

\$25.00 PSF, full service

1,597 RSF to 5,413 RSF

**BRIAN CLAPP**  
206.248.7316  
brian.clapp@kidder.com

**TODD BATTISON**  
206.296.9621  
todd.battison@kidder.com

**SPENCER CLAPP**  
206.248.7427  
spencer.clapp@kidder.com

[KIDDER.COM](http://KIDDER.COM)

This information supplied herein is from sources we deem reliable. It is provided without any representation, warranty, or guarantee, expressed or implied as to its accuracy. Prospective Buyer or Tenant should conduct an independent investigation and verification of all matters deemed to be material, including, but not limited to, statements of income and expenses. Consult your attorney, accountant, or other professional advisor.

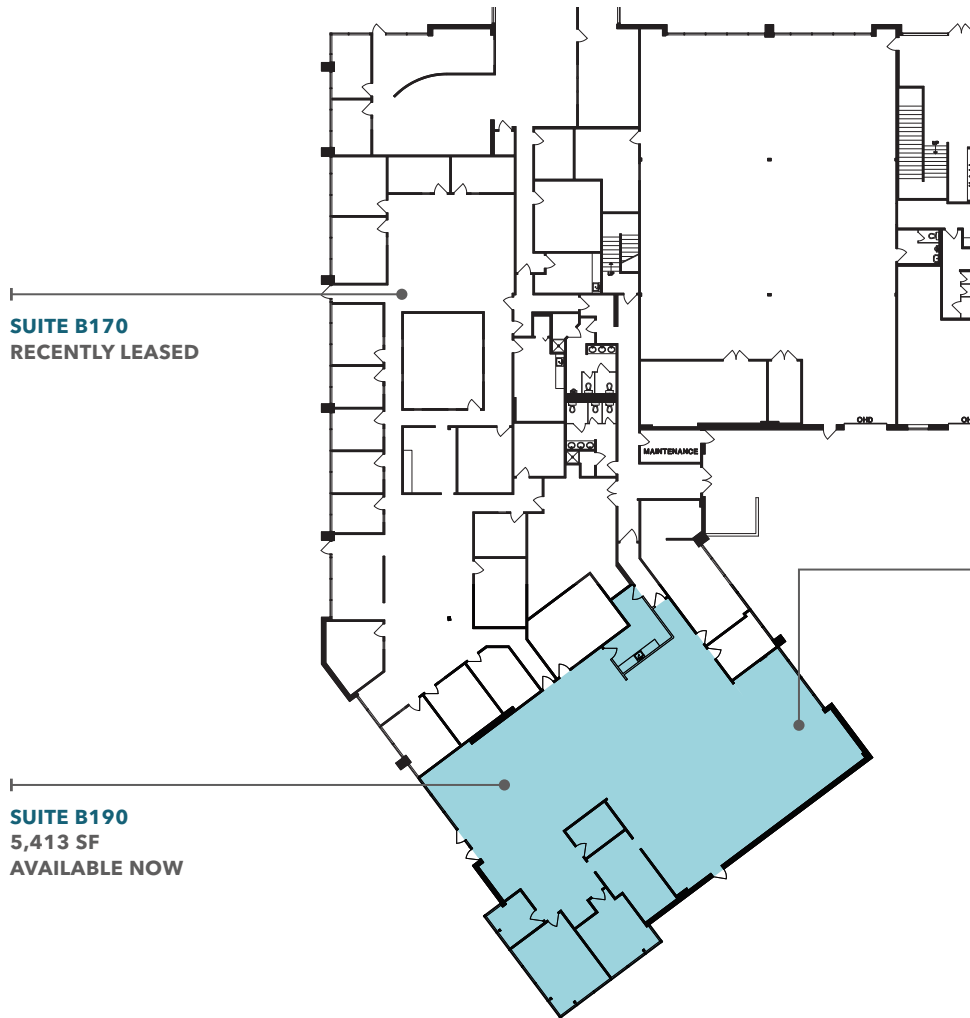
 **Kidder Mathews**

FOR LEASE

# Fairway Center

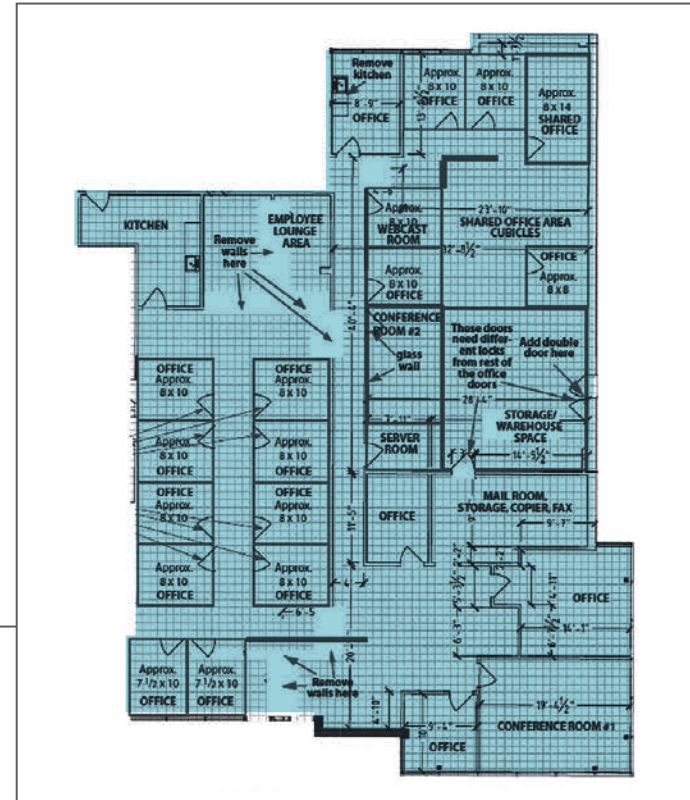
14220-14240 INTERURBAN AVENUE S, TUKWILA, WA

## Building B - First Floor



**SUITE B170**  
RECENTLY LEASED

**SUITE B190**  
5,413 SF  
AVAILABLE NOW



### AVAILABLE SPACE

Building	Suite	Floor	RSF	Available
B	B190	1	5,413 RSF	Available now

KIDDER.COM

This information supplied herein is from sources we deem reliable. It is provided without any representation, warranty, or guarantee, expressed or implied as to its accuracy. Prospective Buyer or Tenant should conduct an independent investigation and verification of all matters deemed to be material, including, but not limited to, statements of income and expenses. Consult your attorney, accountant, or other professional advisor.

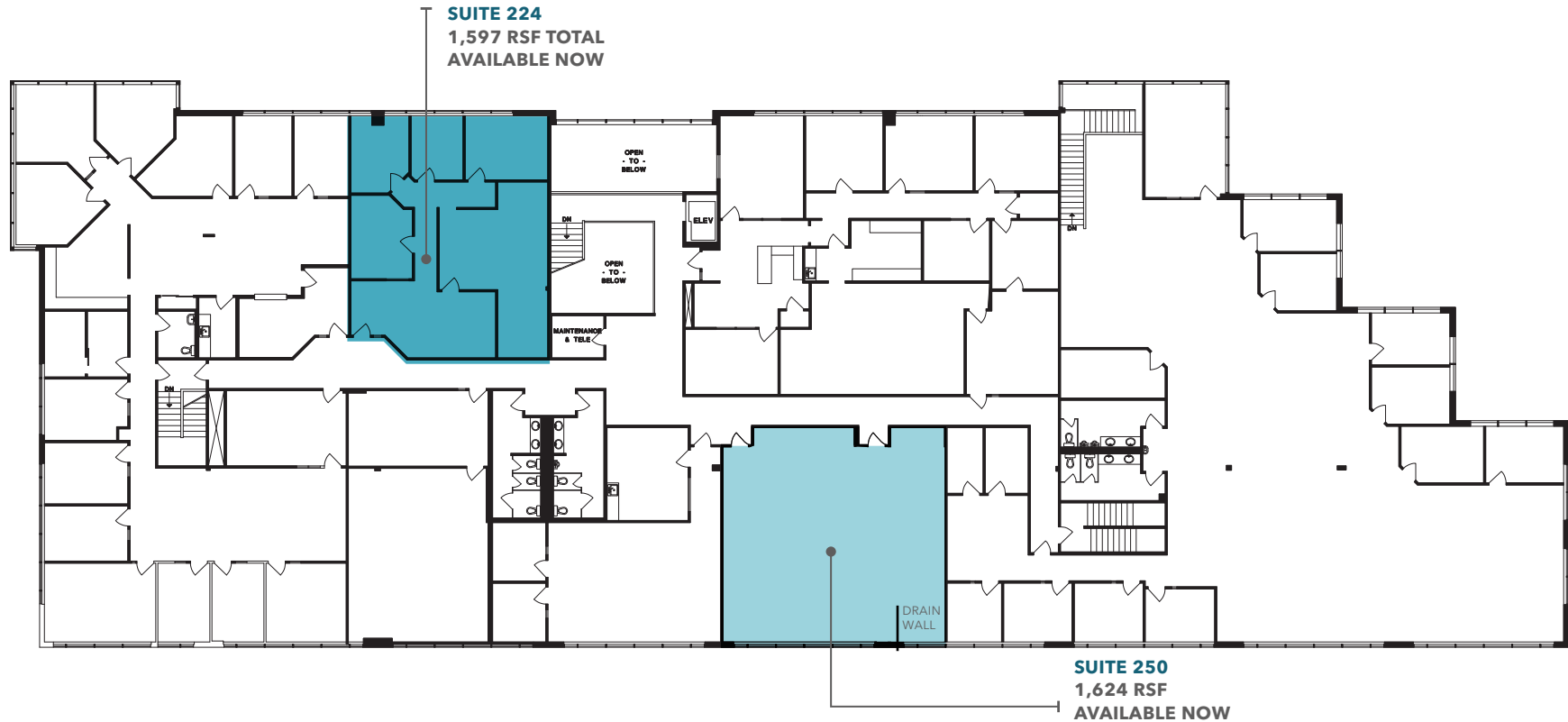


**FOR LEASE**

# Fairway Center

14220-14240 INTERURBAN AVENUE S, TUKWILA, WA

## Building B - Second Floor



### AVAILABLE SPACE

Building	Suite	Floor	RSF	Available
B	B250	2	1,624 RSF	Available now
B	B224	2	1,597 RSF	Available now

[KIDDER.COM](http://KIDDER.COM)

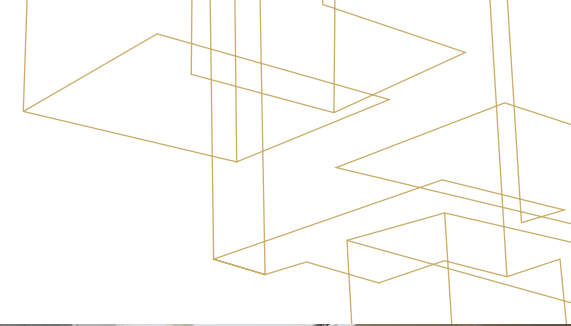
This information supplied herein is from sources we deem reliable. It is provided without any representation, warranty, or guarantee, expressed or implied as to its accuracy. Prospective Buyer or Tenant should conduct an independent investigation and verification of all matters deemed to be material, including, but not limited to, statements of income and expenses. Consult your attorney, accountant, or other professional advisor.



FOR LEASE

# Fairway Center

14220-14240 INTERURBAN AVENUE S, TUKWILA, WA



**BRIAN CLAPP**  
206.248.7316  
[brian.clapp@kidder.com](mailto:brian.clapp@kidder.com)

**TODD BATTISON**  
206.296.9621  
[todd.battison@kidder.com](mailto:todd.battison@kidder.com)

**SPENCER CLAPP**  
206.248.7427  
[spencer.clapp@kidder.com](mailto:spencer.clapp@kidder.com)

[KIDDER.COM](http://KIDDER.COM)

This information supplied herein is from sources we deem reliable. It is provided without any representation, warranty, or guarantee, expressed or implied as to its accuracy. Prospective Buyer or Tenant should conduct an independent investigation and verification of all matters deemed to be material, including, but not limited to, statements of income and expenses. Consult your attorney, accountant, or other professional advisor.

