

FOR LEASE

# 520 CORPORATE CENTER - BLDG B

2353 130TH AVE NE, BELLEVUE, WA 98005



520CORPORATEB.COM

 **Kidder  
Mathews**

## 520 CORPORATE CENTER - BLDG B

*520 Corporate Center is within close proximity to Spring District, Light Rail, Bellevue CBD, I-405, SR-520, and the Microsoft Campus*

**2 MI**  
DOWNTOWN  
BELLEVUE

**5 MI**  
DOWNTOWN  
REDMOND



### SUITE AVAILABILITIES

| Building B | Total Area |
|------------|------------|
| SUITE 100  | 6,523 SF   |
| SUITE 110  | 2,215 SF   |
| SUITE 200  | 15,815 SF  |

### PROPERTY DETAILS

High image two-story office building

Good mix of open area & window line private offices

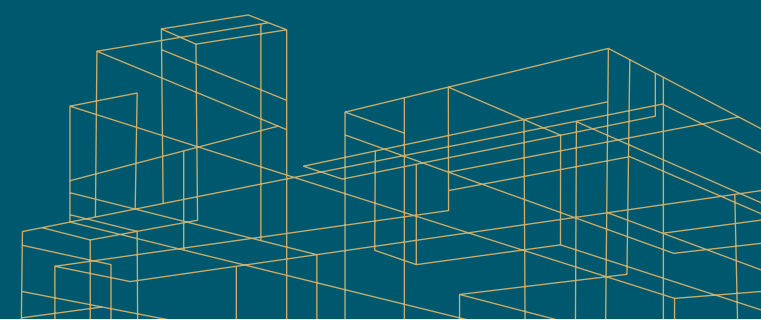
Extensive window lines with natural light & outdoor patio

Direct access to suite via building elevator

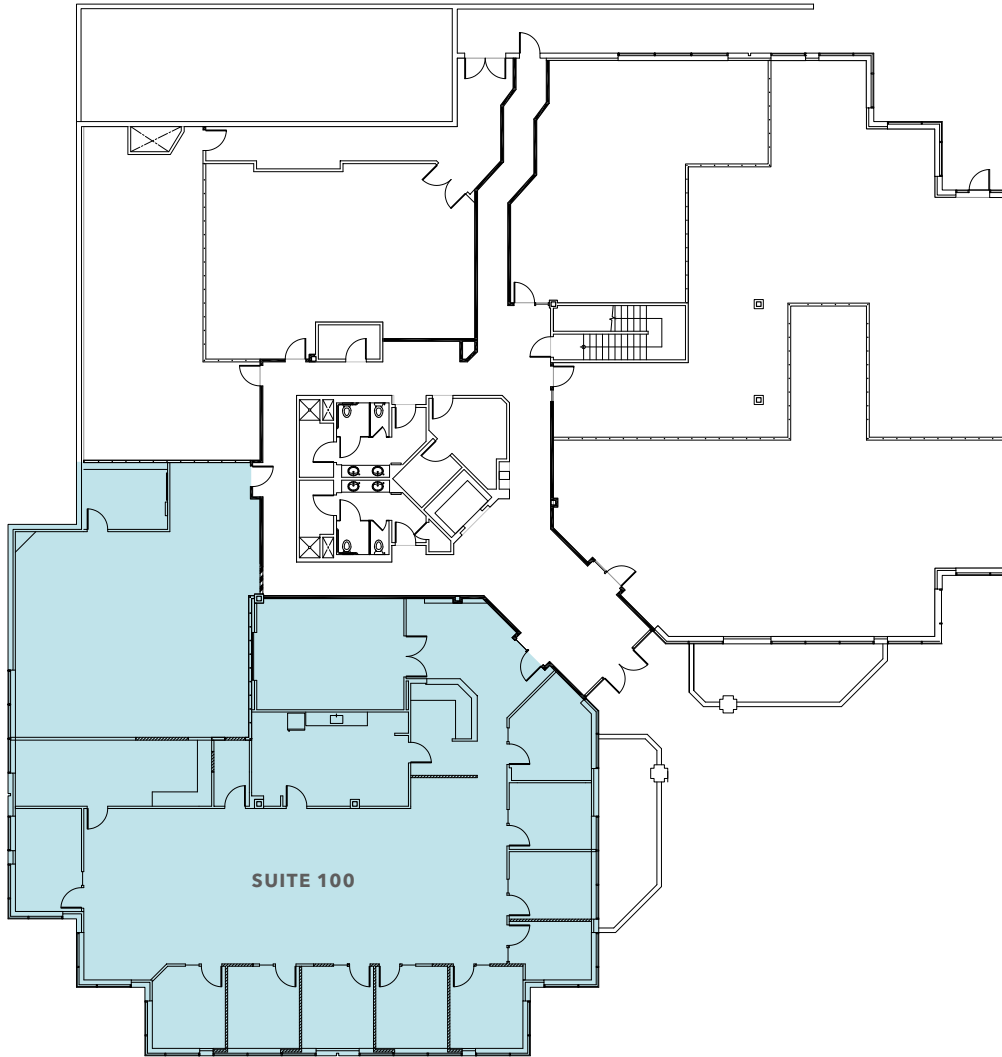
Parking ratio of 3.5 stalls per 1,000 SF

Easy access to I-405, SR-520, & Bellevue CBD

Entire second floor available for lease



# SUITE 100



*6,523 SF*

AVAILABLE

*2,458 SF*

ADDITIONAL STORAGE SPACE

*\$17.00/SF*

BASE RENT

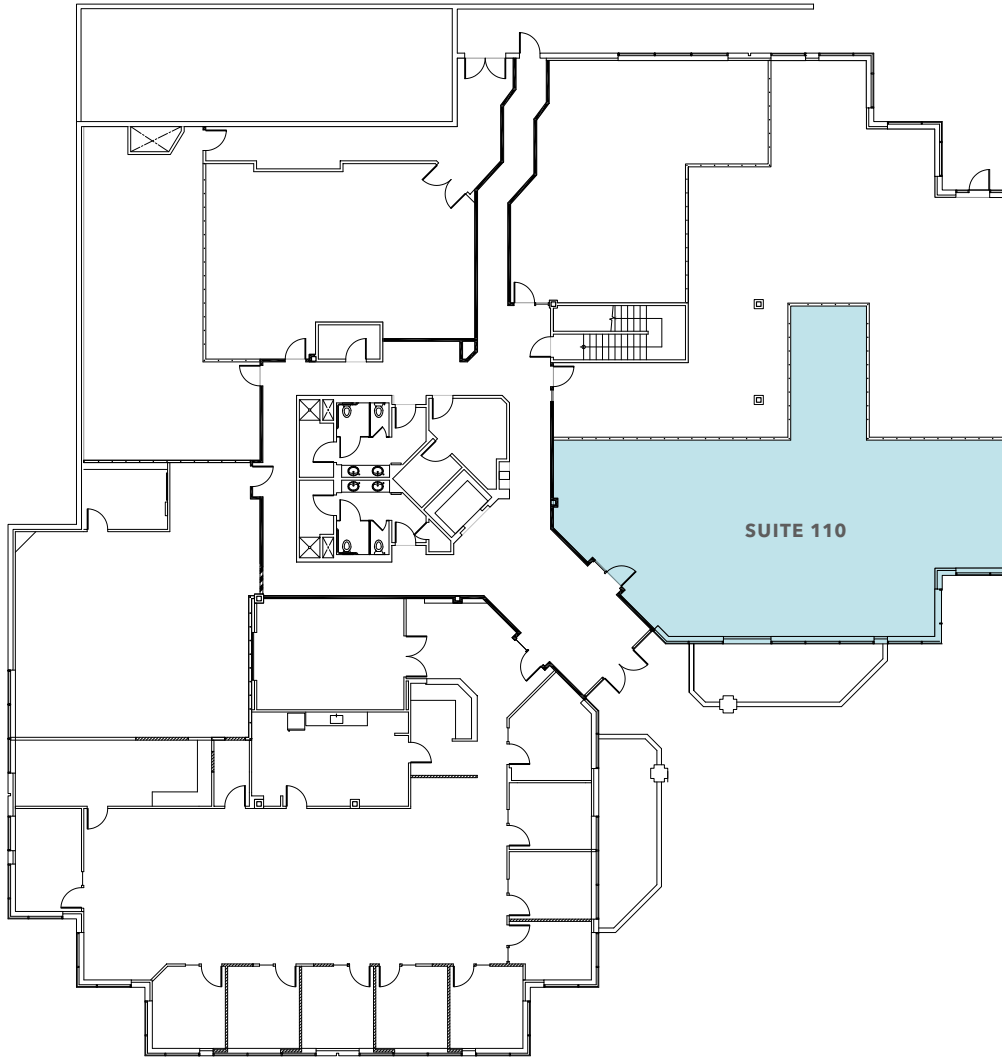
*\$10.00*

EXPENSES

*9/1/2024*

AVAILABLE

# SUITE 110



*2,215 SF*

AVAILABLE

*2,458 SF*

ADDITIONAL STORAGE SPACE

*\$17.00/SF*

BASE RENT

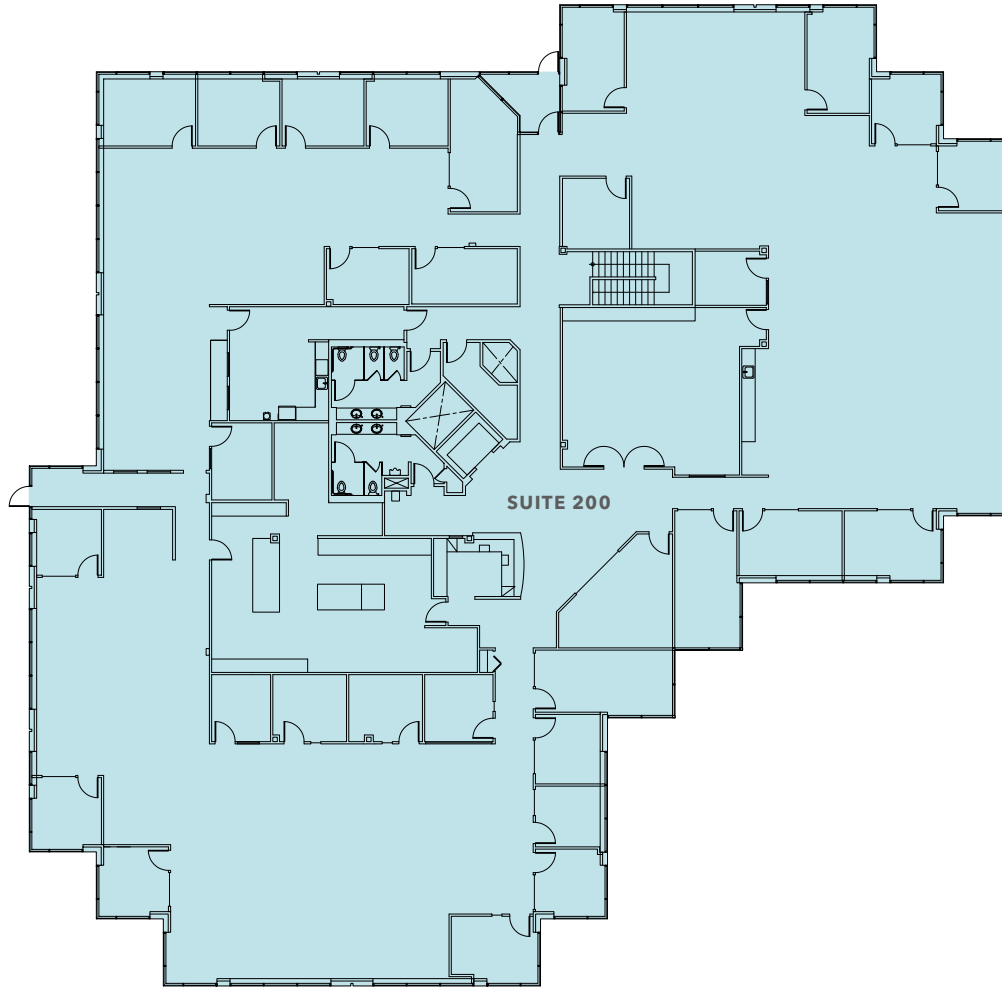
*\$10.00*

EXPENSES

*9/1/2024*

AVAILABLE

# SUITE 200



*15,815 SF*

AVAILABLE

*2,458 SF*

ADDITIONAL STORAGE SPACE

*\$17.00/SF*

BASE RENT

*\$10.00*

EXPENSES




*NOW*

AVAILABLE

520 CORPORATE CENTER - BLDG B

# HIGHLY DESIRABLE & ACCESSIBLE EASTSIDE LOCATION

## East Link Extension

-  Downtown Redmond Station (2025)
-  S Bellevue to Redmond Tech (Open)
-  Judkins Park to Mercer Island (2025)

**SUBJECT  
PROPERTY**

SEATTLE

Lake Washington

BELLEVUE

REDMOND

Northeast  
Bellevue

Lake Sammamish

Mercer Island

AVAILABLE FOR LEASE

KIDDER MATHEWS





BELLEVUE CBD

Spring District

SUBJECT  
PROPERTY

520

*For more information, contact*

**TODD GAUTHIER**  
Executive Vice President  
425.450.1118  
todd.gauthier@kidder.com

**JASON BLOOM**  
Executive Vice President  
425.450.1102  
jason.bloom@kidder.com

**JACK ALBRECHT**  
Associate Vice President  
425.450.1114  
jack.albrecht@kidder.com

**KIDDER.COM**

This information supplied herein is from sources we deem reliable. It is provided without any representation, warranty, or guarantee, expressed or implied as to its accuracy. Prospective Buyer or Tenant should conduct an independent investigation and verification of all matters deemed to be material, including, but not limited to, statements of income and expenses. Consult your attorney, accountant, or other professional advisor.

