

FOR LEASE

7,429 SF - 86,092 SF

25,244 SF - 130,151 SF

TALL FIRS INDUSTRIAL PARK

A Panattoni Development

14621 AND 14719 170TH AVENUE EAST, BONNEY LAKE, WA



We Have Closed!
Construction Starts August 2024
Occupany Q2 2025



David Douglas, SIOR, CCIM
Partner
+1 253 203 1326
ddouglas@nai-psp.com

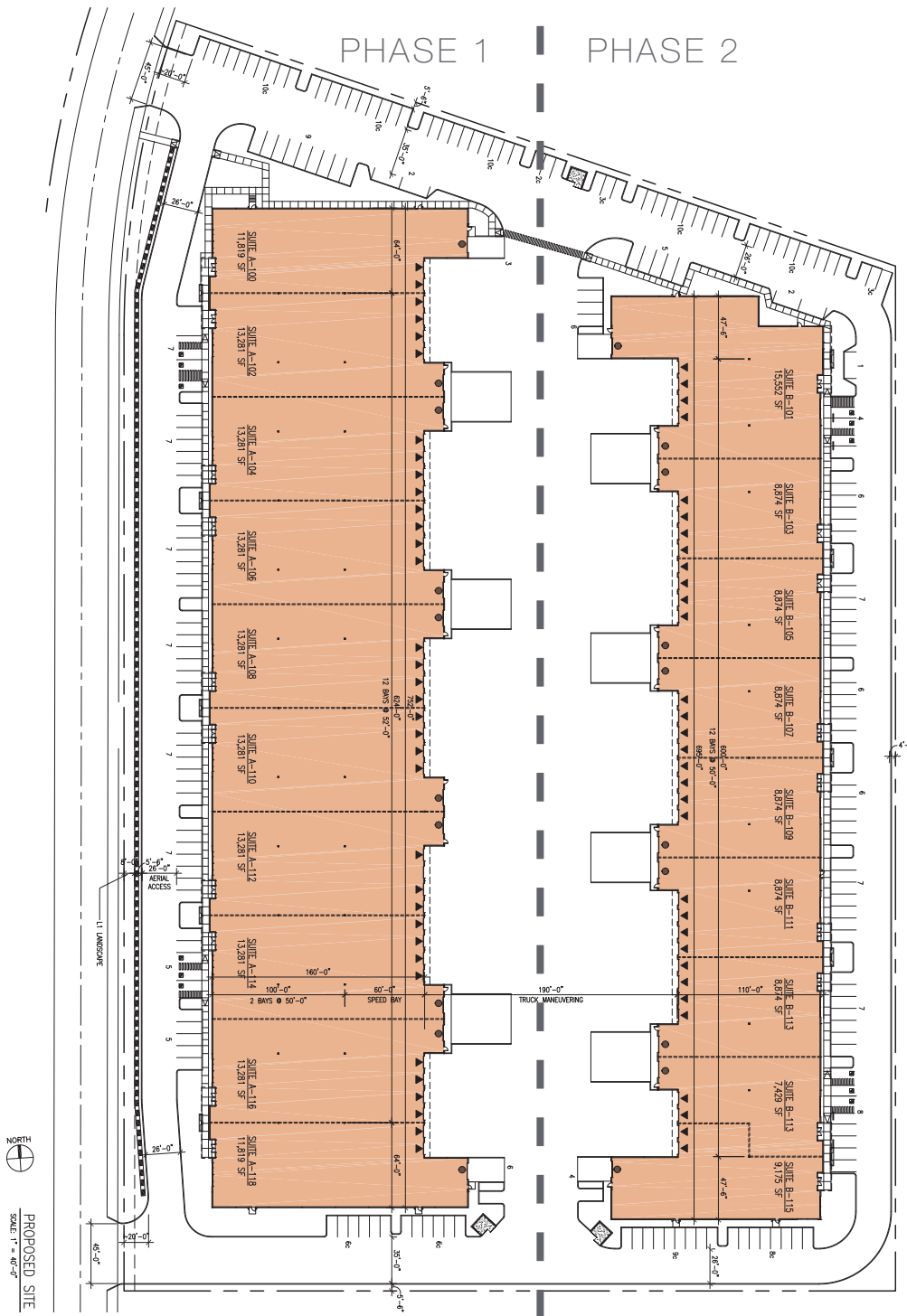
Kyle Schipper, SIOR
Partner
+1 253 203 1320
kschipper@nai-psp.com

Arie Salomon, SIOR, CCIM
Principal
+1 425 586 5636
asalomon@nai-psp.com

Kent Channing
Partner
+1 425 586 5628
kchanning@nai-psp.com



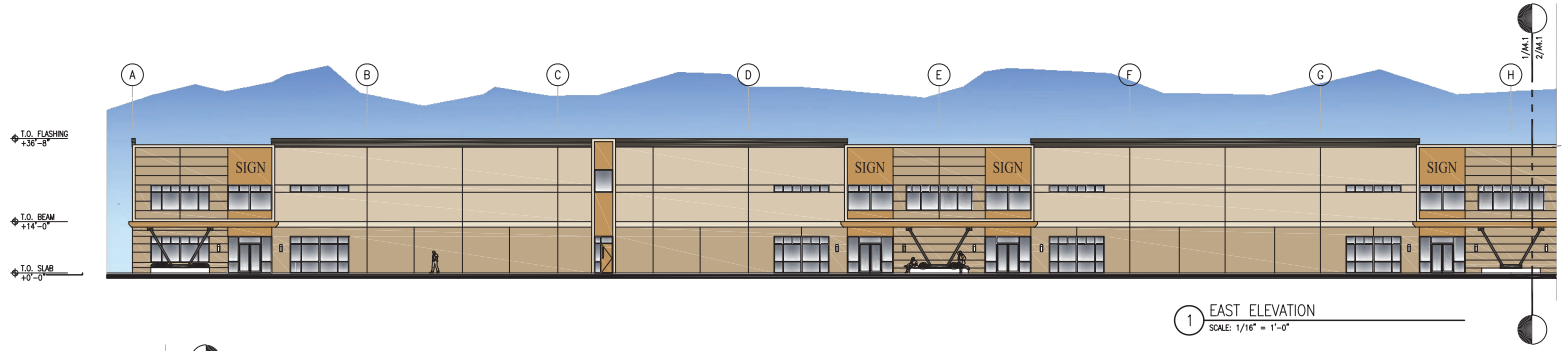
THE INFORMATION CONTAINED HEREIN HAS BEEN GIVEN TO US BY THE OWNER OF THE PROPERTY OR OTHER SOURCES WE DEEM RELIABLE, WE HAVE NO REASON TO DOUBT ITS ACCURACY, BUT WE DO NOT GUARANTEE IT. ALL INFORMATION SHOULD BE VERIFIED PRIOR TO PURCHASE OR LEASE.
G:\SHARED DRIVES\ADMIN TEAM\MARKETING\FLYERS\PIERCE COUNTY\TALL FIRS INDUSTRIAL PARK



HIGHLIGHTS

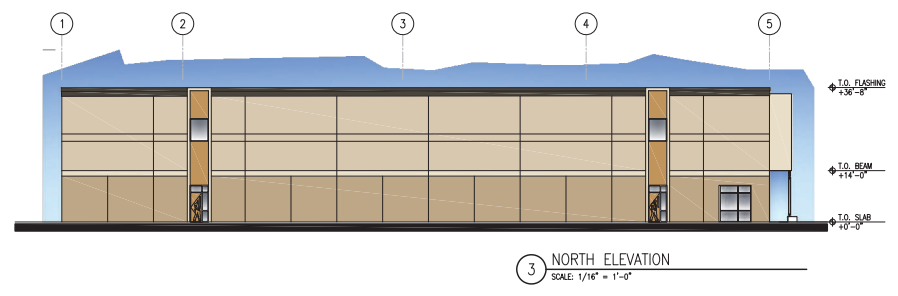
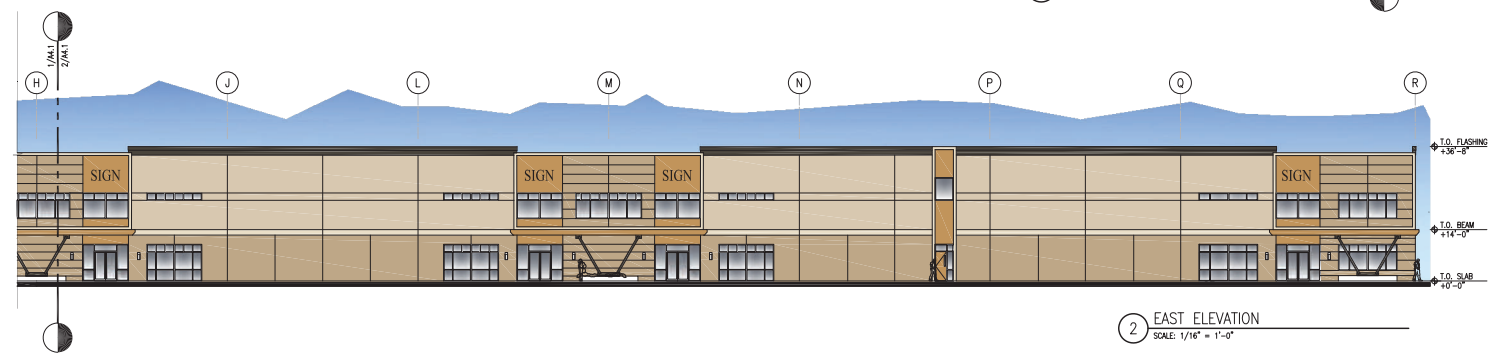
- 
 216,243 Total SF (11.51 Acres)
 Building A: 130,151 SF
 Building B: 86,092 SF
- 
 Flexible size configurations available for lease
- 
 Class A industrial project
- 
 30' Clear Height
 Dock High & Drive-In Loading
- 
 Fully entitled & graded, ready for construction
- 
 Custom tenant improvements
- 
 Mileage to major cities:
 Sumner - 5.3
 Puyallup - 5.6
 Port of Tacoma - 15.1
 Seattle - 36.4
- 
 Q2 2025 delivery
- 
 Extension of Tehaleh Boulevard to the Orting Highway (SR - 162) by 2026
- 
 Tall Firs Industrial Park is located in the 4,700 acre planned community of Tehaleh and features local amenities and CC&Rs to protect value and enhance your long term investment.

LOT ELEVATIONS



COLOR LEGEND

COLOR 1	PAINT : SW6133 MUSLIN WHITE
COLOR 2	PAINT : SW 6141 SOFTER TAN
COLOR 3	PAINT : SW 6143 BASKET BEIGE
COLOR 4	PAINT : SW 6130 MANNERED GOLD
COLOR 5	PAINT : SW URBANE BRONZE
COLOR 6	PREFINISHED METAL : AEP SPAN SIERRA TAN

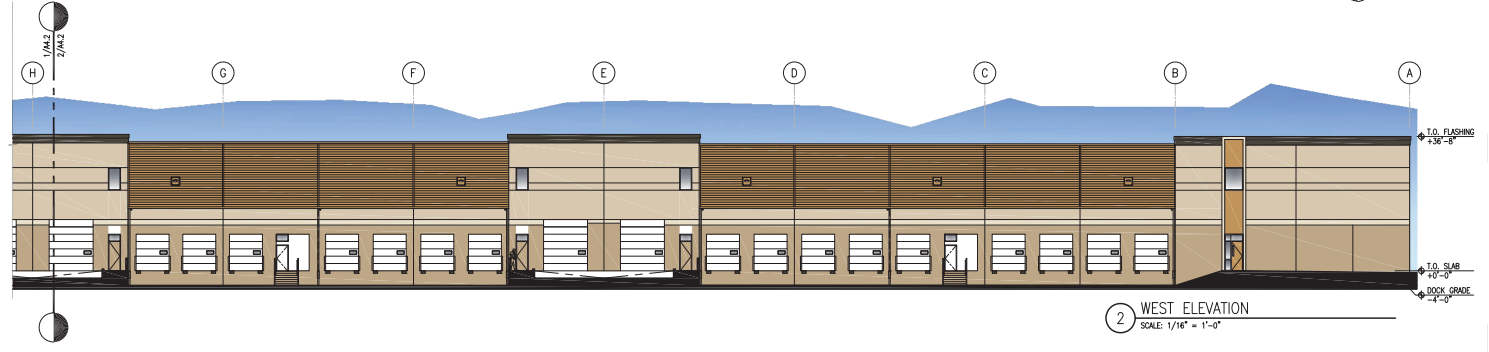


THE INFORMATION CONTAINED HEREIN HAS BEEN GIVEN TO US BY THE OWNER OF THE PROPERTY OR OTHER SOURCES WE DEEM RELIABLE, WE HAVE NO REASON TO DOUBT ITS ACCURACY, BUT WE DO NOT GUARANTEE IT. ALL INFORMATION SHOULD BE VERIFIED PRIOR TO PURCHASE OR LEASE.
G:\SHARED DRIVES\ADMIN TEAM\MARKETING\FLYERS\PIERCE COUNTY\TALL FIRS INDUSTRIAL PARK

LOT ELEVATIONS



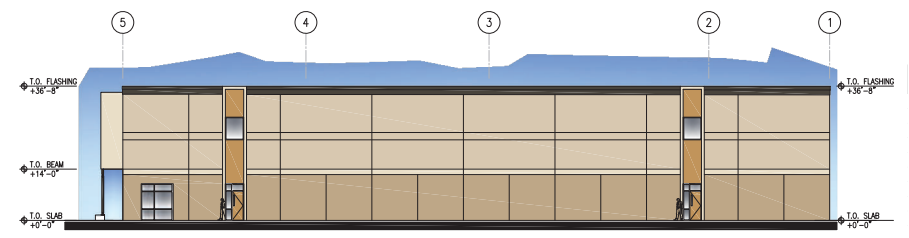
1 WEST ELEVATION
SCALE: 1/16" = 1'-0"



2 WEST ELEVATION
SCALE: 1/16" = 1'-0"

COLOR LEGEND

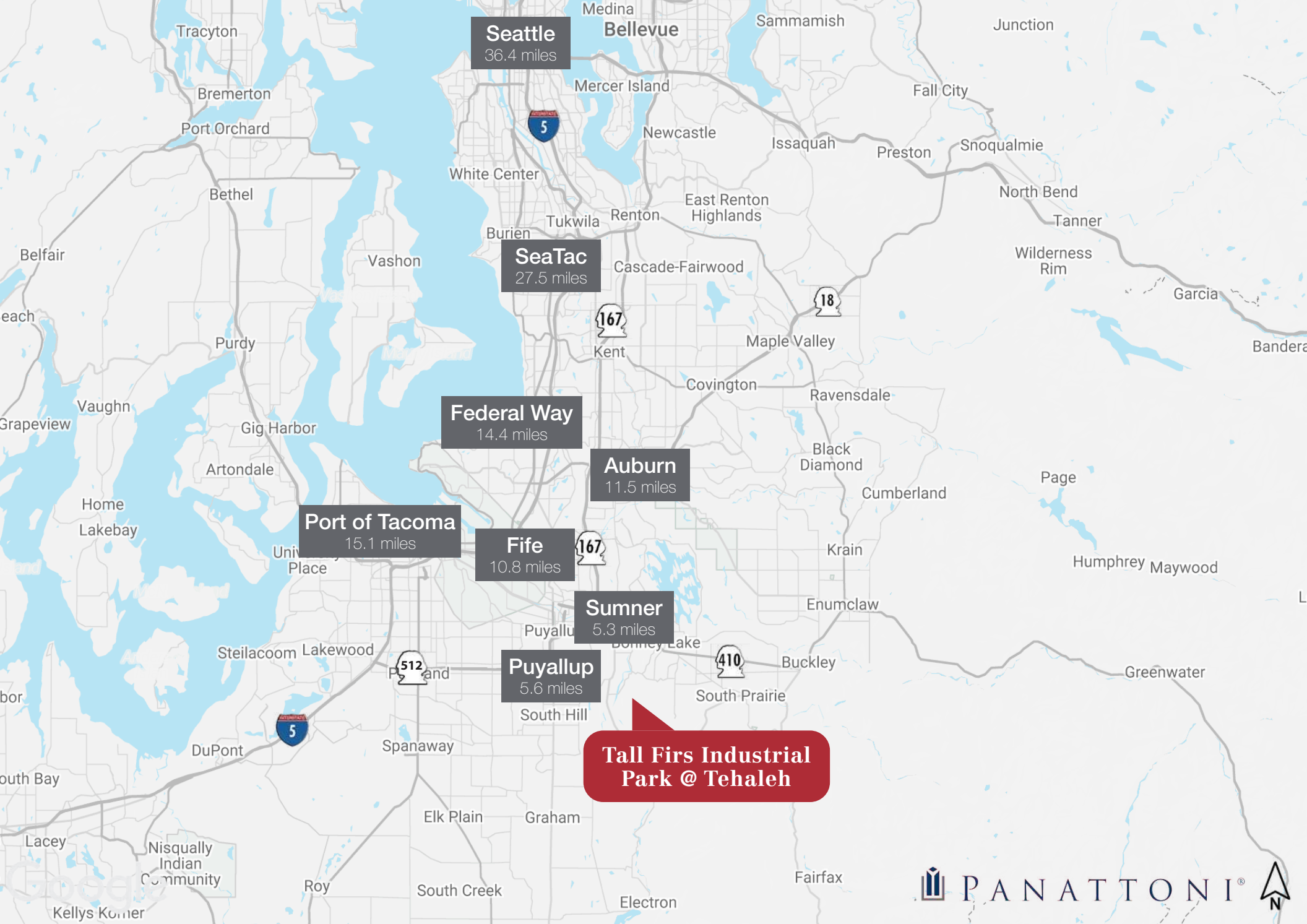
COLOR 1	PAINT : SW6133 MUSLIN WHITE
COLOR 2	PAINT : SW 6141 SOFTER TAN
COLOR 3	PAINT : SW 6143 BASKET BEIGE
COLOR 4	PAINT : SW 6130 MANNERED GOLD
COLOR 5	PAINT : SW URBANE BRONZE
COLOR 6	PREFINISHED METAL : AEP SPAN SIERRA TAN



3 SOUTH ELEVATION
SCALE: 1/16" = 1'-0"

THE INFORMATION CONTAINED HEREIN HAS BEEN GIVEN TO US BY THE OWNER OF THE PROPERTY OR OTHER SOURCES WE DEEM RELIABLE, WE HAVE NO REASON TO DOUBT ITS ACCURACY, BUT WE DO NOT GUARANTEE IT. ALL INFORMATION SHOULD BE VERIFIED PRIOR TO PURCHASE OR LEASE.
G:\SHARED DRIVES\ADMIN TEAM\MARKETING\FLYERS\PIERCE COUNTY\TALL FIRS INDUSTRIAL PARK





**Tall Firs Industrial
Park @ Tehaleh**



THE INFORMATION CONTAINED HEREIN HAS BEEN GIVEN TO US BY THE OWNER OF THE PROPERTY OR OTHER SOURCES WE DEEM RELIABLE, WE HAVE NO REASON TO DOUBT ITS ACCURACY, BUT WE DO NOT GUARANTEE IT. ALL INFORMATION SHOULD BE VERIFIED PRIOR TO PURCHASE OR LEASE.
G:\SHARED DRIVES\ADMIN TEAM\MARKETING\FLYERS\PIERCE COUNTY\TALL FIRS INDUSTRIAL PARK