

# WestPark - Building D

## Office & Flex Space Sublease

**11,900 SF**  
Available for Sublease

8271 154th Avenue NE, Redmond, WA

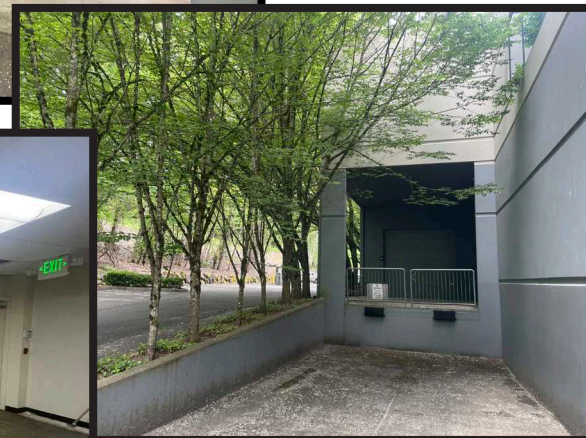
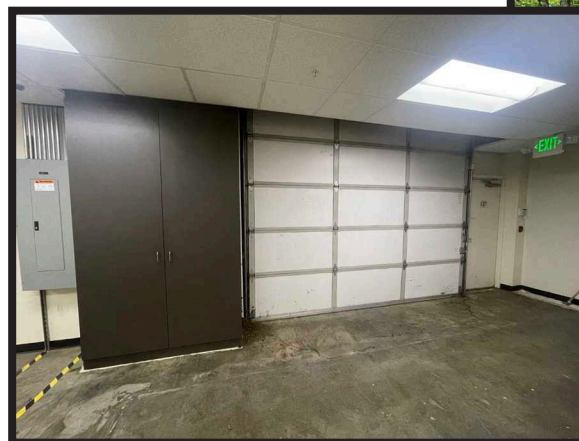


### Location

- Central Redmond location
- Walkable amenities

### Highlights

- 11,900 Rentable SF
- Office portion: 9,968 SF
  - 16 private offices
  - Reception area
  - 10' ceilings
- Warehouse portion: 1,932 SF
  - 2 grade-level doors
- Sublease expires June 30, 2027



Available Now - Sublease expires June 30, 2027

Call brokers for rates

## Property highlights

**11,900 SF**

Total size

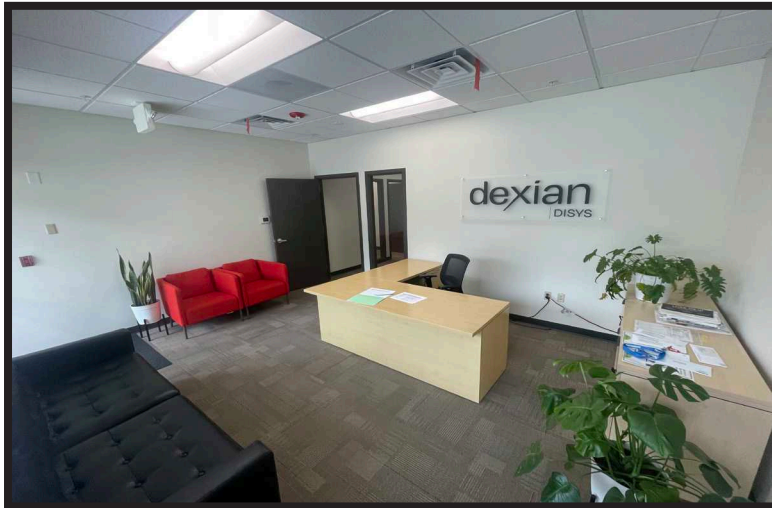
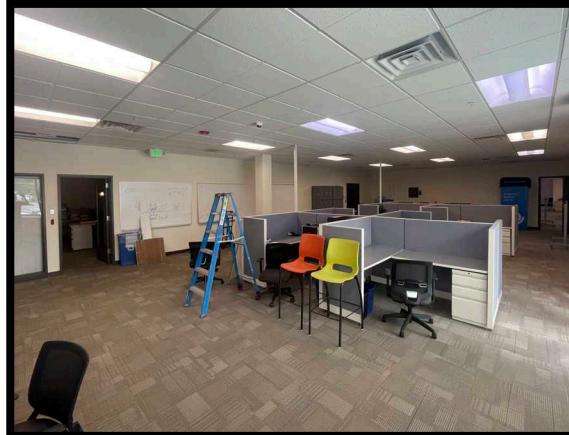
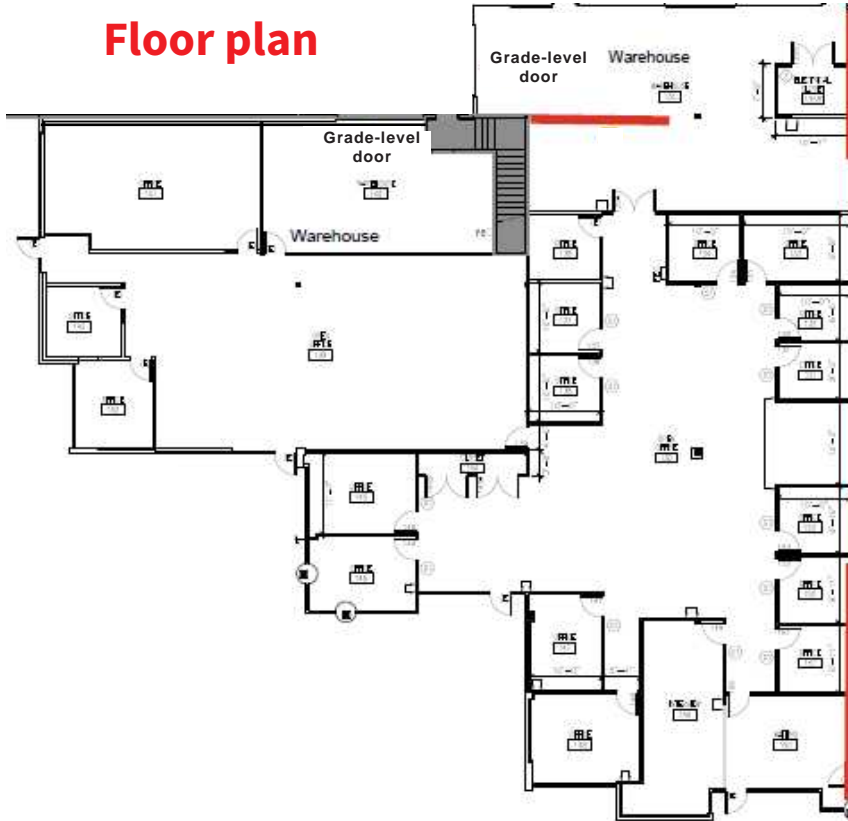
**~9,968 SF**

Office

**~1,932 SF**

Warehouse

## Floor plan



**ALEC GOODWIN**  
+1 424 421 9245  
alec.goodwin@jll.com

**MCKENNA HARTMAN**  
+1 206 245 0708  
mckenna.hartman@jll.com

Jones Lang LaSalle Brokerage, Inc.