

# WEST VALLEY BUSINESS PARK

19011  
68TH AVENUE S

19011 68TH AVENUE S | KENT | WASHINGTON | 98032

## FOR MORE INFORMATION:

**SEAN DURKIN, SIOR, MSRE, CCIM**  
425.830.2647  
sdurkin@lee-associates.com

**JOHN BRUSSA**  
425.891.1424  
jbrussa@lee-associates.com

**TAYLOR HAZARD**  
206.487.7027  
thazard@bkmmgmt.com

## PROPERTY FEATURES

- Professional image environment
- Extensive landscape renovations
- Office suites from 512 SF - 1,200 SF
- Flex/Industrial suites from 1,000 SF - 4,000 SF
- Excellent visibility off of Hwy-181
- Quick access to major area highways
- Flexible floor plan options available
- Ability to expand during initial lease term



The information contained herein is believed to be accurate but is not warranted as to its accuracy and may change or be updated without notice. Seller or landlord makes no representation as to the environmental condition of the property and recommends purchaser's or tenant's independent investigation.

# WEST VALLEY BUSINESS PARK

ON-SITE PROPERTY  
MANAGEMENT

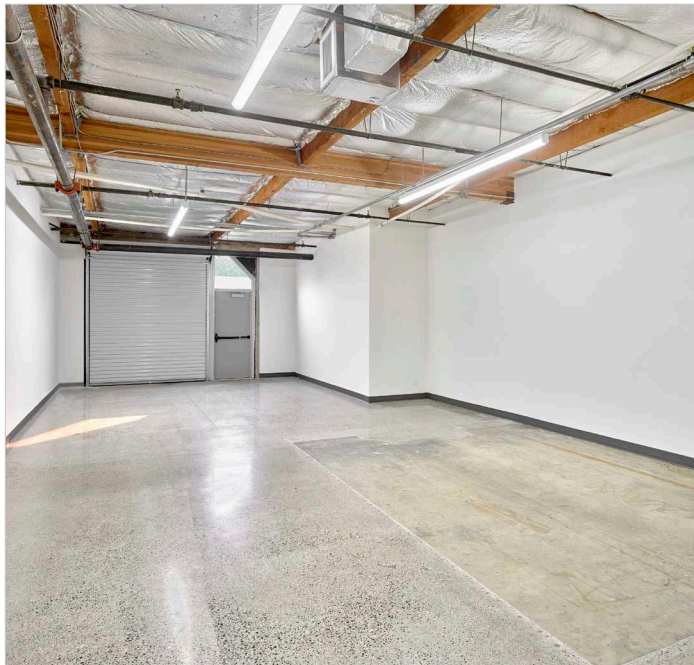


## FOR MORE INFORMATION

**SEAN DURKIN, SIOR, MSRE, CCIM**  
425.830.2647  
sdurkin@lee-associates.com

**JOHN BRUSSA**  
425.891.1424  
jbrussa@lee-associates.com

**TAYLOR HAZARD**  
206.487.7027  
thazard@bkmmgmt.com



**VIDEO WALK-THRU**  
Sample Flex/Warehouse  
Space

**VIDEO WALK-THRU**  
Sample Office Space



**WEST VALLEY BUSINESS PARK**  
19011 68TH AVENUE S  
KENT, WASHINGTON 98032

**LEE & ASSOCIATES**  
COMMERCIAL REAL ESTATE SERVICES

# WEST VALLEY BUSINESS PARK

## AMENITIES & IMPROVEMENTS



### NEARBY AMENITIES

#### NEARBY AMENITIES

- Costco Wholesale
- Nordstrom
- Target
- The Home Depot
- REI
- Total Wine & More

#### FOR MORE INFORMATION

**SEAN DURKIN, SIOR, MSRE, CCIM**  
425.830.2647  
sdurkin@lee-associates.com

**JOHN BRUSSA**  
425.891.1424  
jbrussa@lee-associates.com

**TAYLOR HAZARD**  
206.487.7027  
thazard@bkmmgmt.com

**WEST VALLEY BUSINESS PARK**  
19011 68TH AVENUE S  
KENT, WASHINGTON 98032

