



PARMAC BUSINESS PARK BUILDING 2

FOR LEASE | 11110-11118 117TH PL NE | KIRKLAND, WA



**Kidder
Mathews**

TODD GAUTHIER
425.450.1118
todd.gauthier@kidder.com

JASON BLOOM
425.450.1102
jason.bloom@kidder.com

JACK ALBRECHT
425.450.1114
jack.albrecht@kidder.com

KIDDER.COM

FOR LEASE

Parmac Business Park - Building 2

11110-11118 117TH PL NE, KIRKLAND, WA



Property Features

1,920 - 3,840 SF

Grade-level loading

Built in 2015

14' ceilings

Energy-efficient T-lighting

3-phase power

R-30 roof insulation

Insulated R-24 roll-up doors

High-efficiency heaters

Lease rates:

Office: \$2.15/SF, NNN

Warehouse: \$1.50/SF, NNN

NNN: ±\$0.33/SF

KIDDER.COM

This information supplied herein is from sources we deem reliable. It is provided without any representation, warranty, or guarantee, expressed or implied as to its accuracy. Prospective Buyer or Tenant should conduct an independent investigation and verification of all matters deemed to be material, including, but not limited to, statements of income and expenses. Consult your attorney, accountant, or other professional advisor.

km Kidder
Mathews

FOR LEASE

Parmac Business Park - Building 2

11110-11118 117TH PL NE, KIRKLAND, WA

Suite 2A

1,920 SF

TOTAL

816 SF

OFFICE

1,104 SF

WAREHOUSE

NOW

AVAILABLE

TODD GAUTHIER

425.450.1118

todd.gauthier@kidder.com

JASON BLOOM

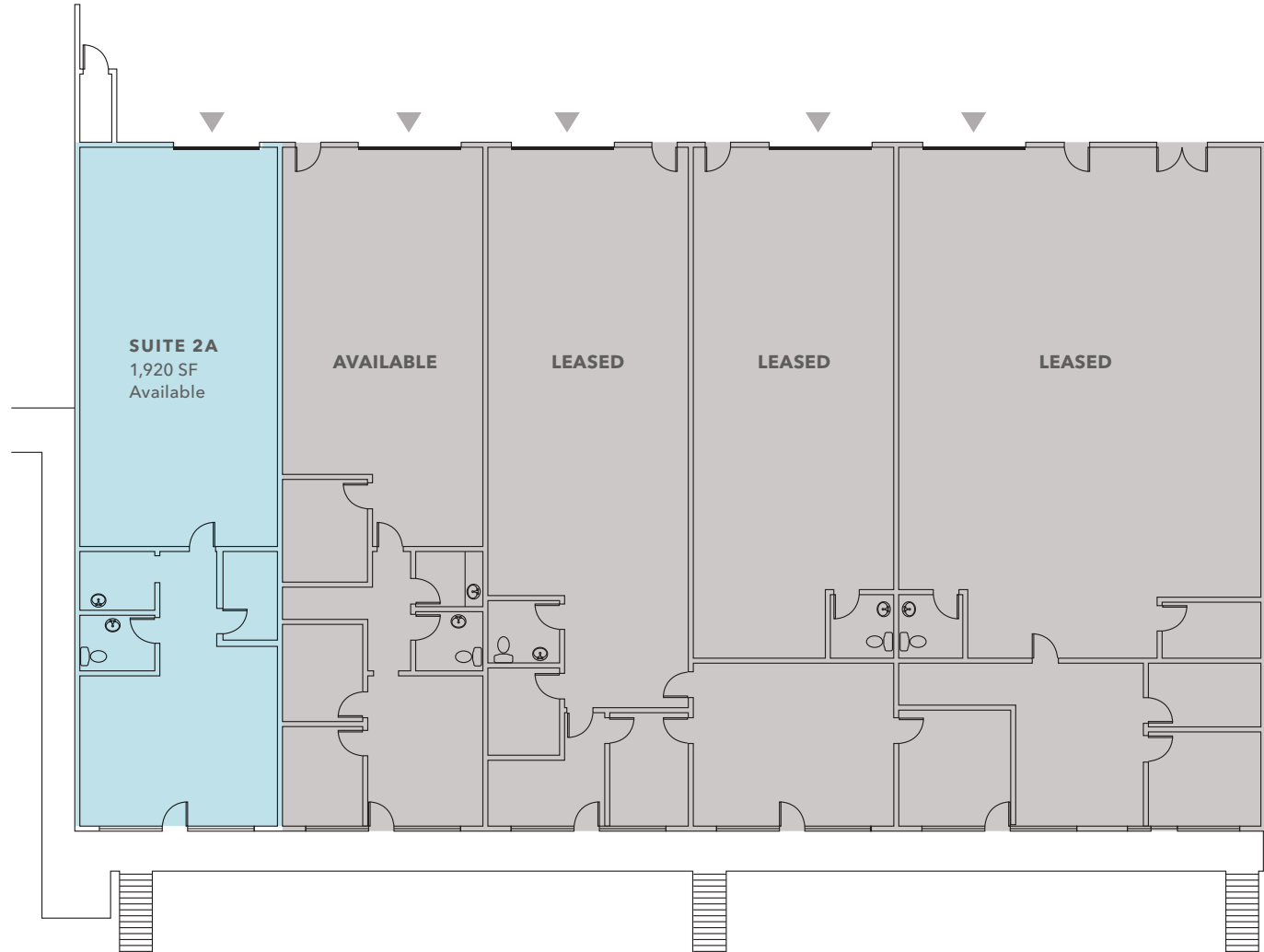
425.450.1102

jason.bloom@kidder.com

JACK ALBRECHT

425.450.1114

jack.albrecht@kidder.com



KIDDER.COM

This information supplied herein is from sources we deem reliable. It is provided without any representation, warranty, or guarantee, expressed or implied as to its accuracy. Prospective Buyer or Tenant should conduct an independent investigation and verification of all matters deemed to be material, including, but not limited to, statements of income and expenses. Consult your attorney, accountant, or other professional advisor.

km Kidder Mathews

FOR LEASE

Parmac Business Park - Building 2

11110-11118 117TH PL NE, KIRKLAND, WA

Suite 2B

1,920 SF

TOTAL

866 SF

OFFICE

1,054 SF

WAREHOUSE

30-60 DAYS

AVAILABLE

TODD GAUTHIER

425.450.1118

todd.gauthier@kidder.com

JASON BLOOM

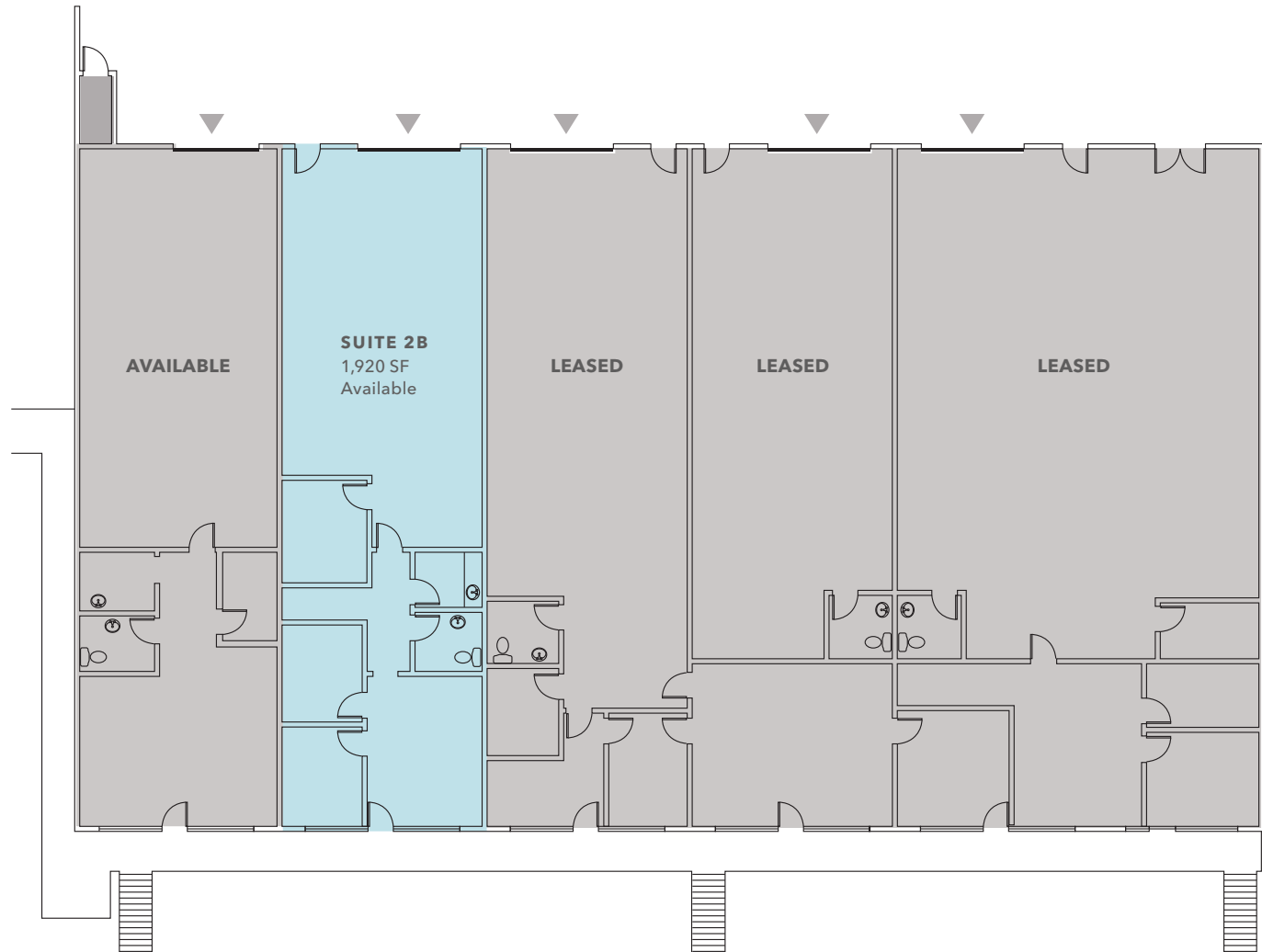
425.450.1102

jason.bloom@kidder.com

JACK ALBRECHT

425.450.1114

jack.albrecht@kidder.com



KIDDER.COM

This information supplied herein is from sources we deem reliable. It is provided without any representation, warranty, or guarantee, expressed or implied as to its accuracy. Prospective Buyer or Tenant should conduct an independent investigation and verification of all matters deemed to be material, including, but not limited to, statements of income and expenses. Consult your attorney, accountant, or other professional advisor.

km Kidder Mathews

FOR LEASE

Parmac Business Park - Building 2

11110-11118 117TH PL NE, KIRKLAND, WA

Suite 2A/2B

3,840 SF

TOTAL

1,682 SF

OFFICE

2,158 SF

WAREHOUSE

30-60 DAYS

AVAILABLE

TODD GAUTHIER

425.450.1118

todd.gauthier@kidder.com

JASON BLOOM

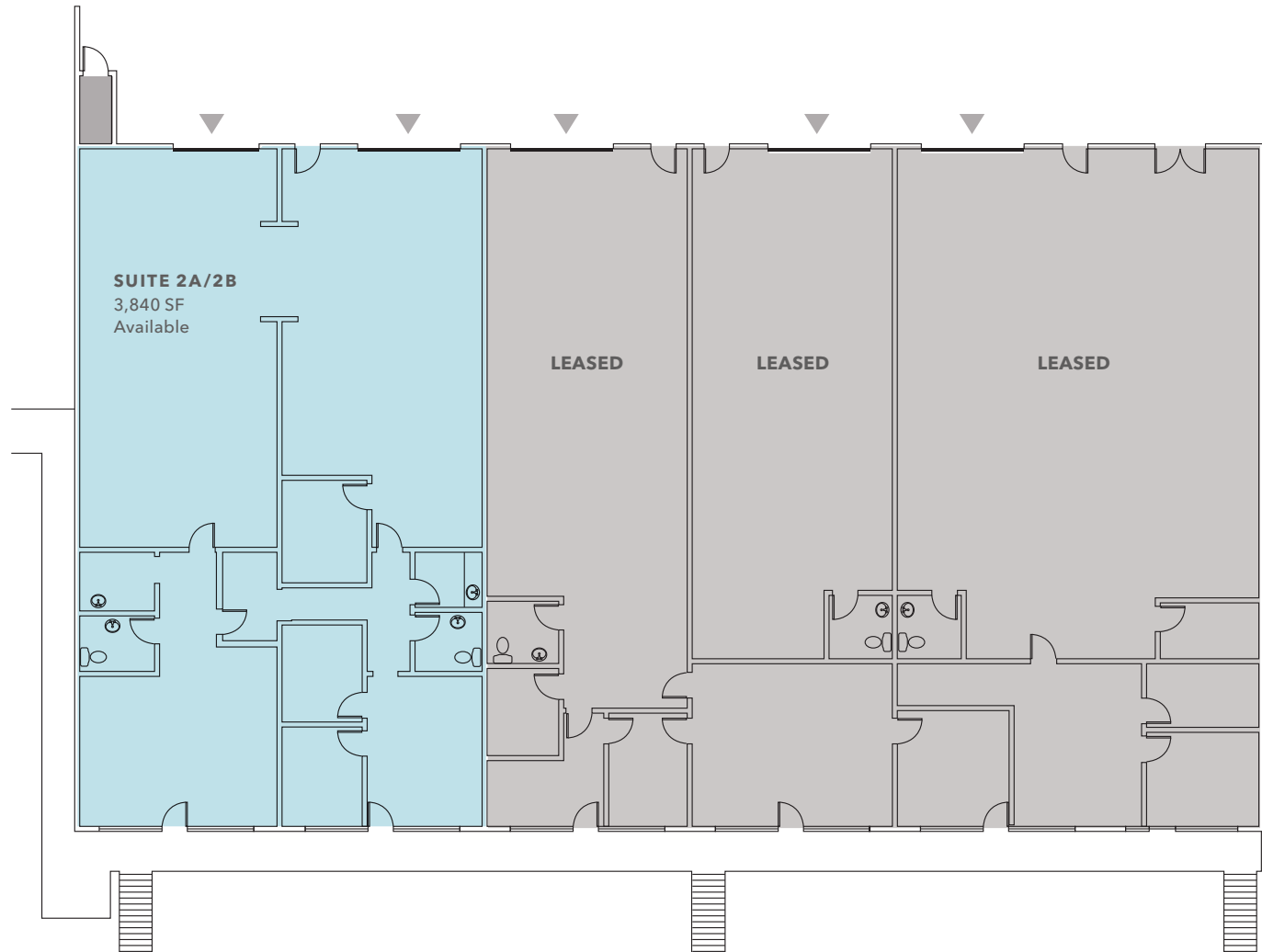
425.450.1102

jason.bloom@kidder.com

JACK ALBRECHT

425.450.1114

jack.albrecht@kidder.com



GRADE-LEVEL DOOR

KIDDER.COM

This information supplied herein is from sources we deem reliable. It is provided without any representation, warranty, or guarantee, expressed or implied as to its accuracy. Prospective Buyer or Tenant should conduct an independent investigation and verification of all matters deemed to be material, including, but not limited to, statements of income and expenses. Consult your attorney, accountant, or other professional advisor.

km Kidder Mathews

FOR LEASE

Parmac Business Park - Building 2

11110-11118 117TH PL NE, KIRKLAND, WA



KIDDER.COM

This information supplied herein is from sources we deem reliable. It is provided without any representation, warranty, or guarantee, expressed or implied as to its accuracy. Prospective Buyer or Tenant should conduct an independent investigation and verification of all matters deemed to be material, including, but not limited to, statements of income and expenses. Consult your attorney, accountant, or other professional advisor.

km Kidder Mathews