

# SOUND RETINA BUILDING

FOR SALE OR LEASE

2237 S 19TH STREET | TACOMA, WA 98405

## TACOMA MEDICAL OFFICE BUILDING



### SALE & LEASE INFORMATION

Available Size	Demisable	Land Size	Year Built	Lease Rate	Sale Price
10,000 SF	2,500 SF - 10,000 SF	29,958 SF	2007	\$28.00/SF/Yr, NNN	\$4,000,000

### PROPERTY HIGHLIGHTS

- High Quality Suburban Office Space
- Close Proximity to Allenmore Hospital, Tacoma General Hospital, & Saint Joseph's Hospital
- Great Visibility
- Easy Access to I-5 and Hwy-16
- Ample Parking



**BRUCE VALENTINE**  
253.779.2400

bvalentine@neilwalter.com

**CAMERON VALENTINE**  
253.779.2427

cvalentine@neilwalter.com

All information references in this document are approximate. The information contained herein is contained from sources deemed reliable. It is provided without representation, warranty, or guarantee, expressed or implied as to accuracy. Prospective buyer or tenant should conduct its own independent investigation relating to the property, government codes and regulations, allowed uses, and all other matters, regardless of whether they are referred to or contained in this document.

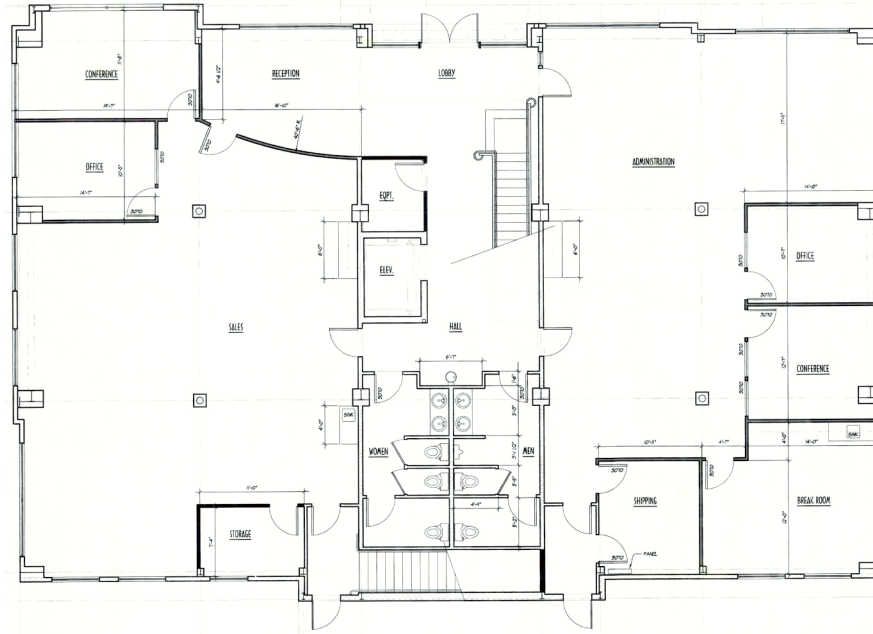
# SOUND RETINA BUILDING

2237 S 19TH STREET | TACOMA, WA 98405

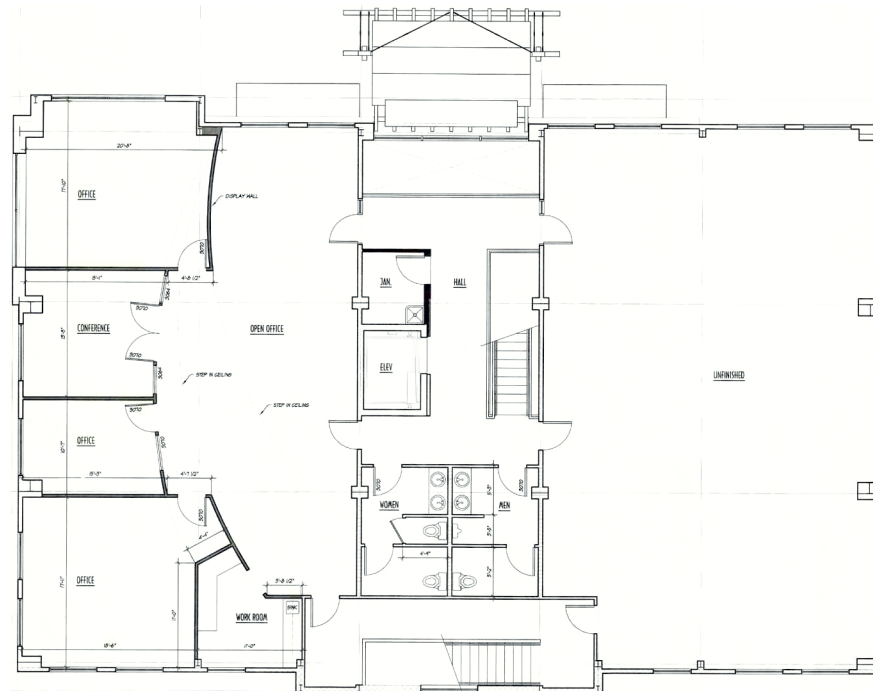


NEIL WALTER  
COMPANY

1st Floor  
5,000 SF



2nd Floor  
5,000 SF



**BRUCE VALENTINE**  
253.779.2400  
bvalentine@neilwalter.com

**CAMERON VALENTINE**  
253.779.2427  
cvalentine@neilwalter.com

1940 East D St, #100  
Tacoma, WA 98421  
253.779.8400  
www.neilwalter.com

All information references in this document are approximate. The information contained herein is contained from sources deemed reliable. It is provided without representation, warranty, or guarantee, expressed or implied as to accuracy. Prospective buyer or tenant should conduct its own independent investigation relating to the property, government codes and regulations, allowed uses, and all other matters, regardless of whether they are referred to or contained in this document.

# SOUND RETINA BUILDING

2237 S 19TH STREET | TACOMA, WA 98405



**BRUCE VALENTINE**  
253.779.2400  
bvalentine@neilwalter.com

**CAMERON VALENTINE**  
253.779.2427  
cvalentine@neilwalter.com

1940 East D St, #100  
Tacoma, WA 98421  
253.779.8400  
www.neilwalter.com

All information references in this document are approximate. The information contained herein is contained from sources deemed reliable. It is provided without representation, warranty, or guarantee, expressed or implied as to accuracy. Prospective buyer or tenant should conduct its own independent investigation relating to the property, government codes and regulations, allowed uses, and all other matters, regardless of whether they are referred to or contained in this document.