

18911 & 19015 NORTH CREEK PARKWAY
BOTHELL, WASHINGTON

BRODERICK
• GROUP •



PLAZA @ NORTH CREEK

5,279 – 120,789 SF AVAILABLE

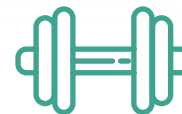


PLAZA @ NORTH CREEK

PROPERTY HIGHLIGHTS



CLASS A OFFICE / TECH
CAMPUS WITH SECURITY /
CARD KEY ACCESS



NEW TENANT AMENITY EXERCISE
FACILITY, SHOWERS, LOCKERS, AND
BIKE STORAGE



RESTAURANTS, DELICATESSEN,
JOGGING & WALKING TRAILS,
& NORTSHORE YMCA WITHIN
WALKING DISTANCE



4-5/1,000 SF PARKING RATIO;
EXCELLENT ACCESS & FREEWAY
VISIBILITY (I-405 & SR-522) WITH
ELECTRIC VEHICLE CHARGING STATIONS



HOTELS WITHIN WALKING
DISTANCE (WYNDHAM GARDEN
HOTEL & RESIDENCE INN)



FIBER SERVICES ARE PROVIDED BY
FRONTIER FIOS. CABLE PROVIDED
BY COMCAST. ADDITIONAL TELECOM
SERVICES PROVIDED BY VERIZON,
AT&T & ACCESS TELEPHONE
SOLUTIONS, INC.

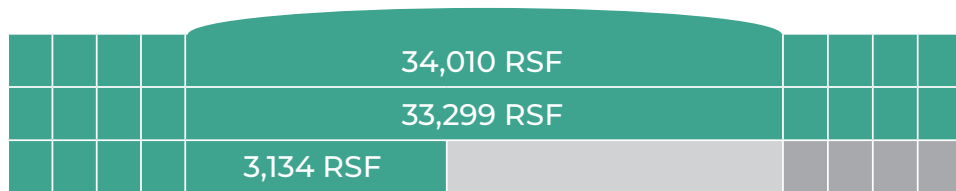
PLAZA @ NORTH CREEK

AVAILABLE SPACE

SPACE	SIZE	AVAILABLE	NOTES
EAST BUILDING · 18911 NORTH CREEK PARKWAY, BOTHELL, WA			
Suite 100	16,120 RSF	NOW	Furnished
Floor 2	5,279 – 34,226 RSF	NOW	Full Floor Opportunity. Divisible to 5,279 SF.
FLOORS 1 & 2 CAN BE COMBINED FOR A TOTAL OF 50,346 RSF			
NORTH BUILDING · 19015 NORTH CREEK PARKWAY, BOTHELL, WA			
Suite 107	3,134 RSF	4/1/2025	
Suite 200	33,299 RSF	4/1/2025	
Suite 300	34,010 RSF	4/1/2025	
FLOORS 1-3 CAN BE COMBINED FOR A TOTAL OF 70,443 RSF			
TOTAL SQUARE FOOTAGE AVAILABLE: 120,789 RSF			

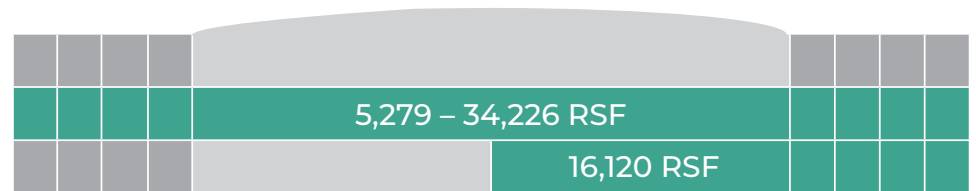
PLAZA @ NORTH CREEK

NORTH BUILDING



70,443 RSF TOTAL AVAILABLE

EAST BUILDING



50,346 RSF TOTAL AVAILABLE

PLAZA @ NORTH CREEK

NORTH BUILDING

19015 NORTH CREEK PKWY
BOTHELL, WA



TYLER SLONE

425.274.4281

slone@broderickgroup.com

PAUL JERUE

425.646.5223

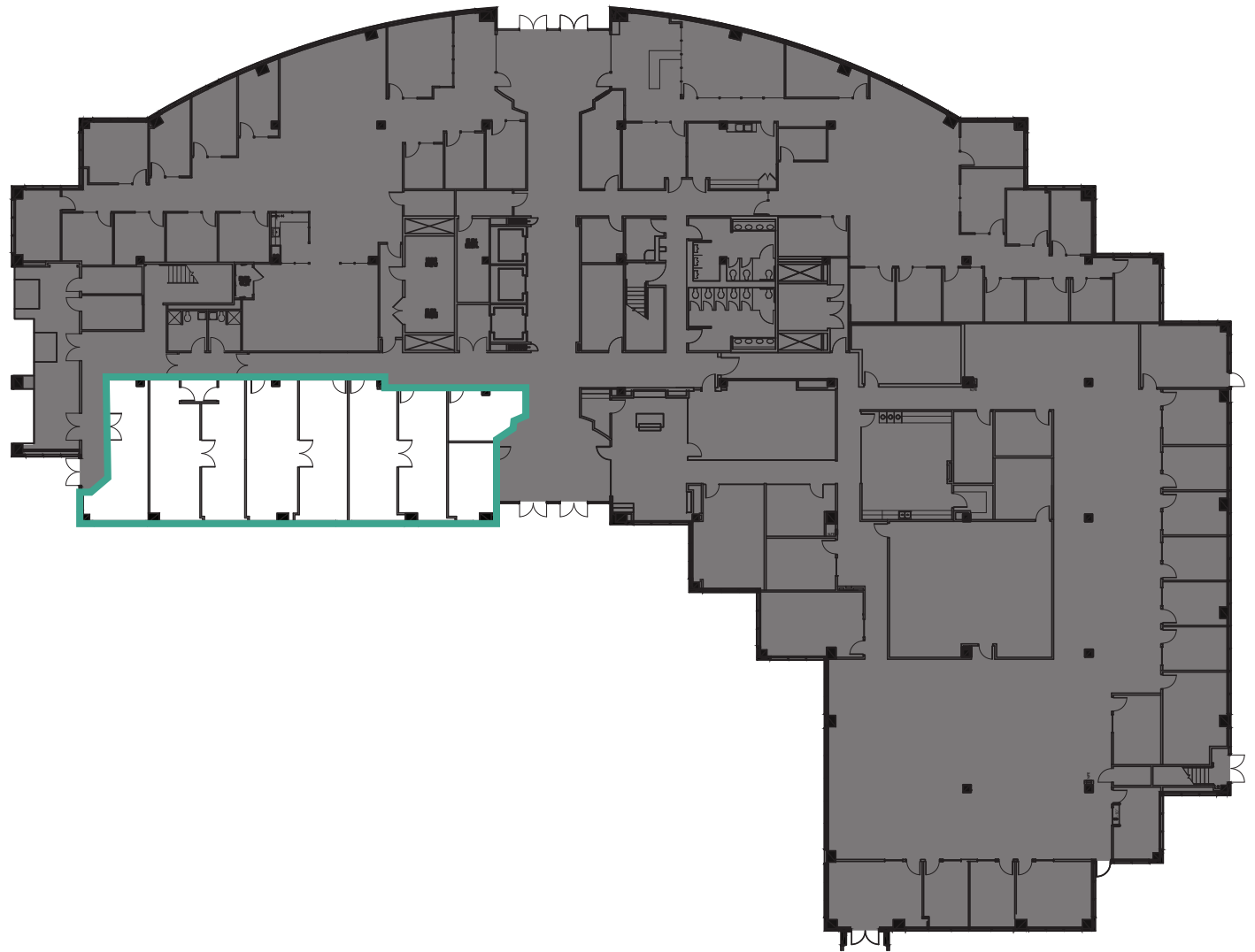
jerue@broderickgroup.com

BRODERICK
• GROUP •



FLOOR PLAN

SUITE 107 | 3,134 RSF | AVAILABLE 4/1/2025



PLAZA @ NORTH CREEK

NORTH BUILDING

19015 NORTH CREEK PKWY
BOTHELL, WA



TYLER SLONE

425.274.4281

slone@broderickgroup.com

PAUL JERUE

425.646.5223

jerue@broderickgroup.com

BRODERICK
• GROUP •



FLOOR PLAN

SUITE 200 | 33,299 RSF | AVAILABLE 4/1/2025



PLAZA @ NORTH CREEK

NORTH BUILDING

19015 NORTH CREEK PKWY
BOTHELL, WA



TYLER SLONE

425.274.4281

slone@broderickgroup.com

PAUL JERUE

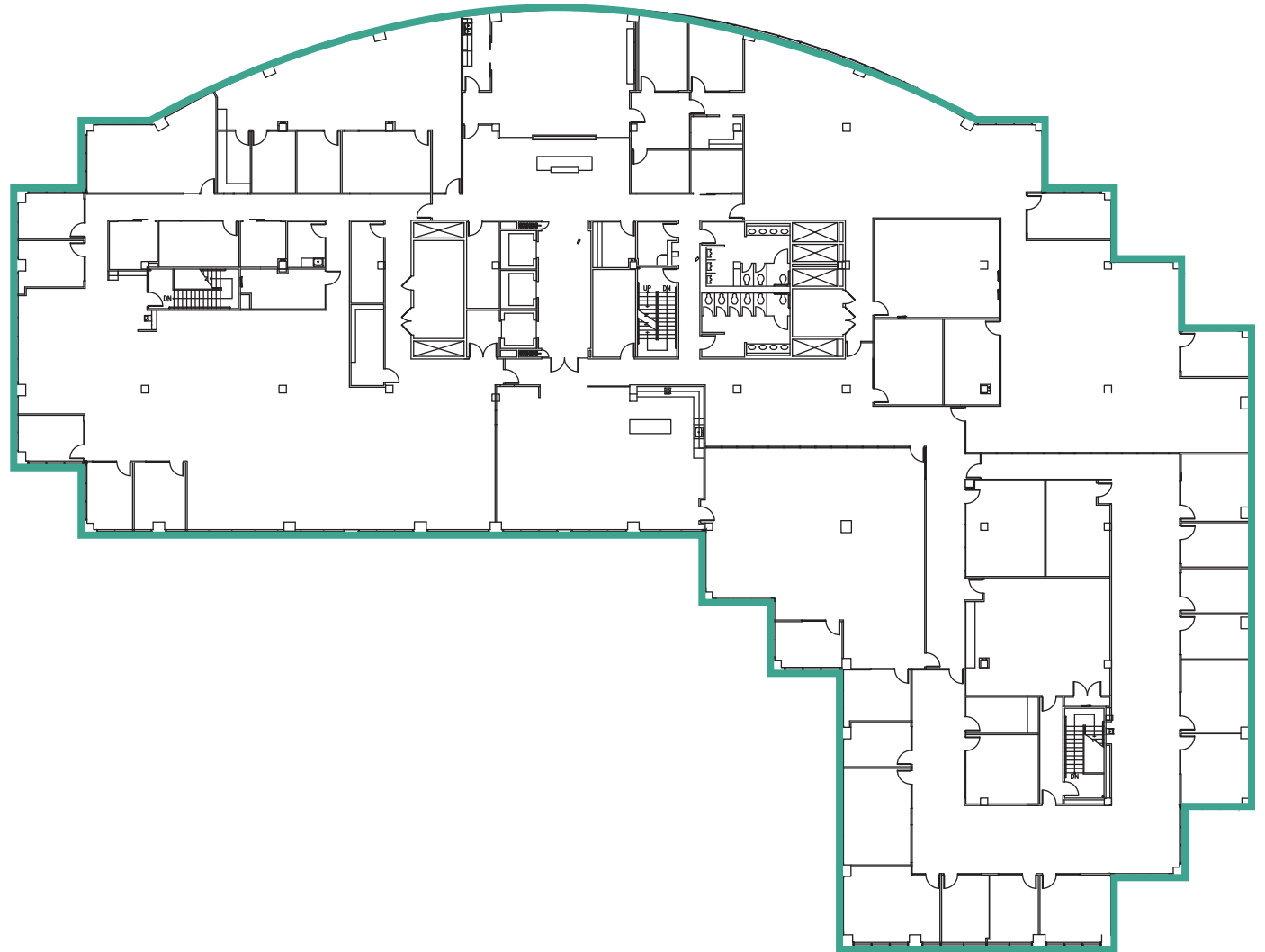
425.646.5223

jerue@broderickgroup.com



FLOOR PLAN

SUITE 300 | 34,010 RSF | AVAILABLE 4/1/2025



PLAZA @ NORTH CREEK

EAST BUILDING

18911 NORTH CREEK PKWY
BOTHELL, WA



TYLER SLONE

425.274.4281

slone@broderickgroup.com

PAUL JERUE

425.646.5223

jerue@broderickgroup.com

BRODERICK
• GROUP •



FLOOR PLAN

SUITE 100 | 16,120 RSF | AVAILABLE NOW
FURNISHED



PLAZA @ NORTH CREEK

EAST BUILDING

18911 NORTH CREEK PKWY
BOTHELL, WA



TYLER SLONE

425.274.4281

slone@broderickgroup.com

PAUL JERUE

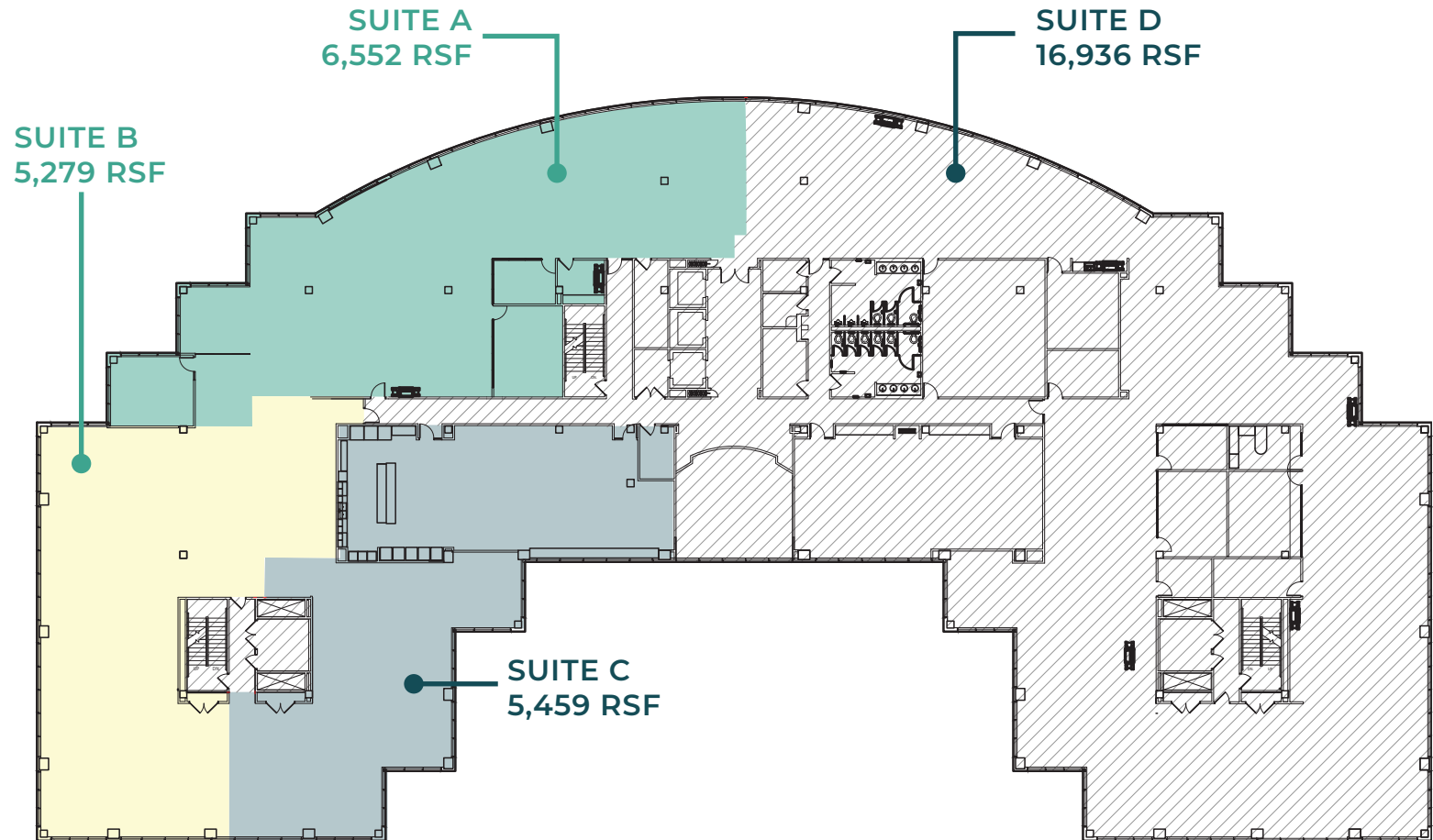
425.646.5223

jerue@broderickgroup.com

BRODERICK
• GROUP •

FLOOR PLAN

FLOOR 2 | 5,279 – 34,226 RSF | AVAILABLE NOW



PLAZA @ NORTH CREEK

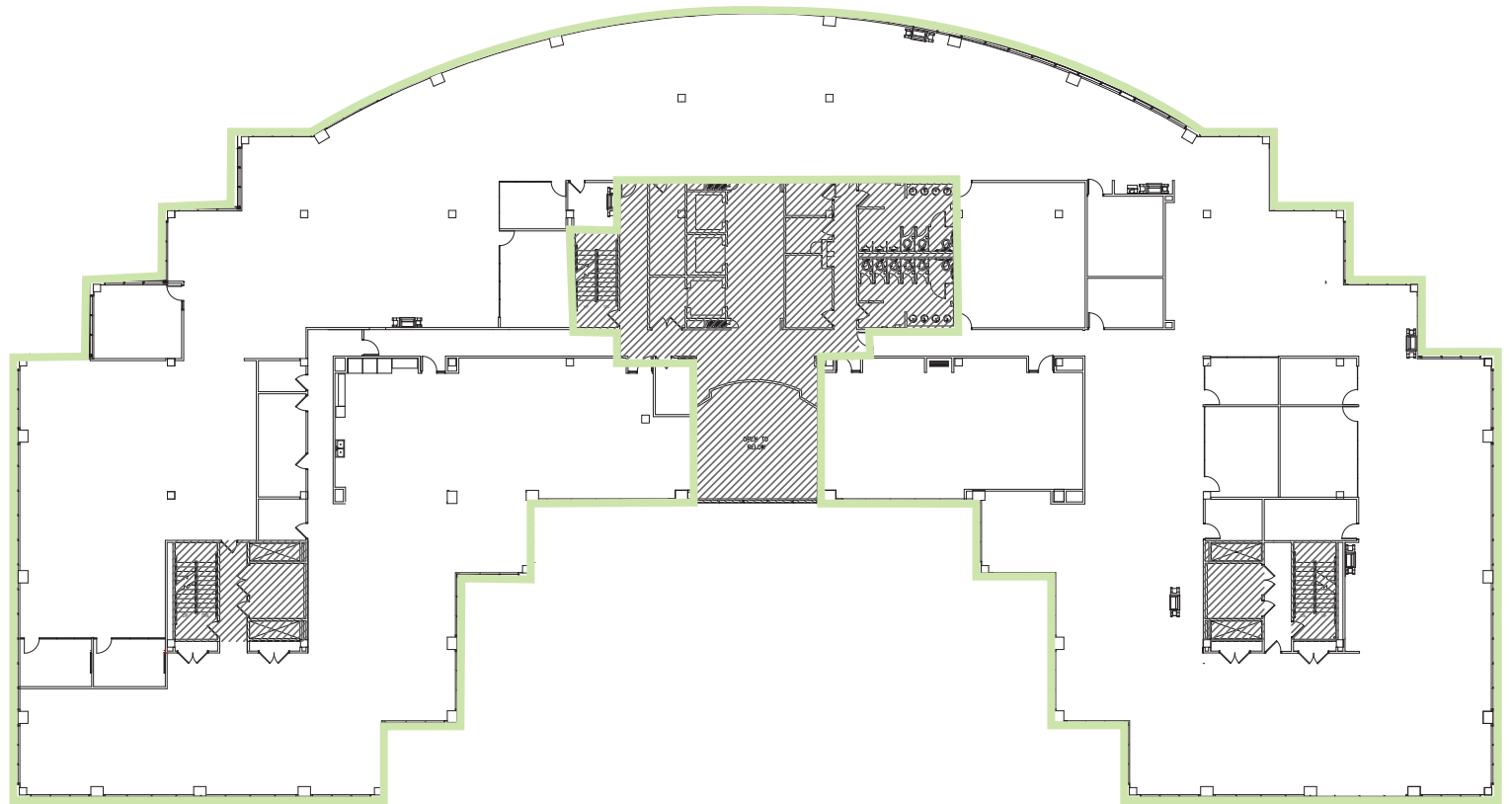
EAST BUILDING

18911 NORTH CREEK PKWY
BOTHELL, WA



FLOOR PLAN

FLOOR 2 | 34,226 RSF | AVAILABLE NOW



TYLER SLONE

425.274.4281

slone@broderickgroup.com

PAUL JERUE

425.646.5223

jerue@broderickgroup.com

BRODERICK
• GROUP •

