

**FOR LEASE**

# Valley Centre Corporate Park

2302 B Street NW, Bldg 4, Suite 102, Auburn, WA 98001

*Prime industrial corner unit location with 17 Dock Doors and 1 Grade Level Door.*

## PROPERTY HIGHLIGHTS

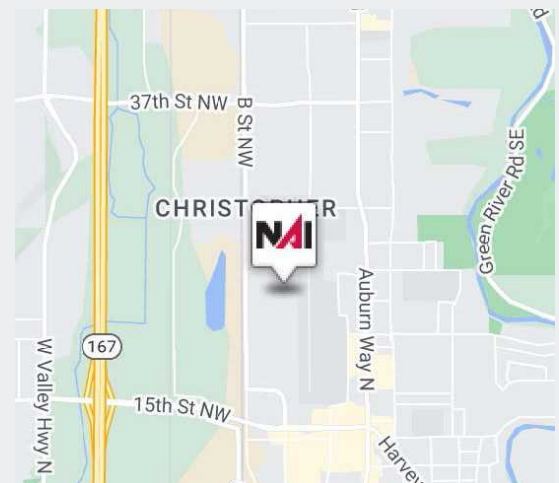
- + 17 DH (9'x10'), 1 GL (12' x14')
- + 3 pit levelers; dock seals and edge of dock on every door
- + 30' clear height
- + ESFR sprinklers
- + Column spacing - 43'9" x 60'
- + Corner unit with lots of parking
- + 400 amps of 277/480 volt, 3-phase power
- + Call for rates
- + Available now

TOTAL SF

**52,816 SF**

OFFICE SF

**1,425 SF**



**JEFF FORSBERG, CCIM**

Principal  
+1 425 586 5610  
jforsberg@nai-pp.com

**ARIE SALOMON, SIOR, CCIM**

Principal  
+1 425 586 5636  
asalomon@nai-pp.com

**BRET MATYSIK**

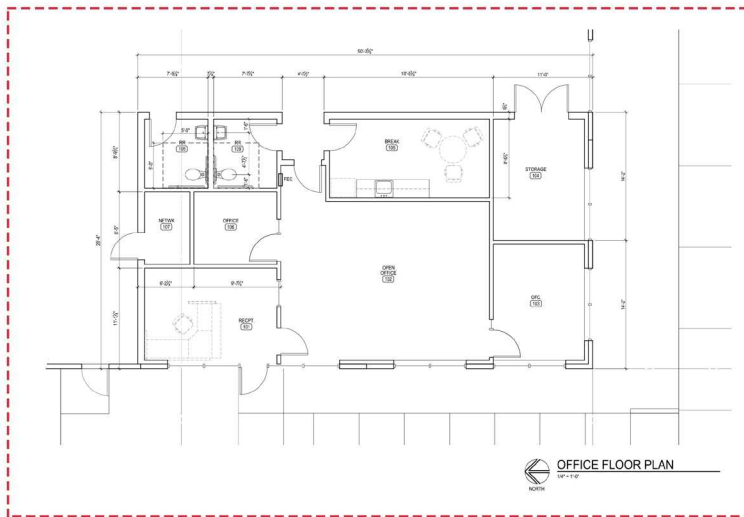
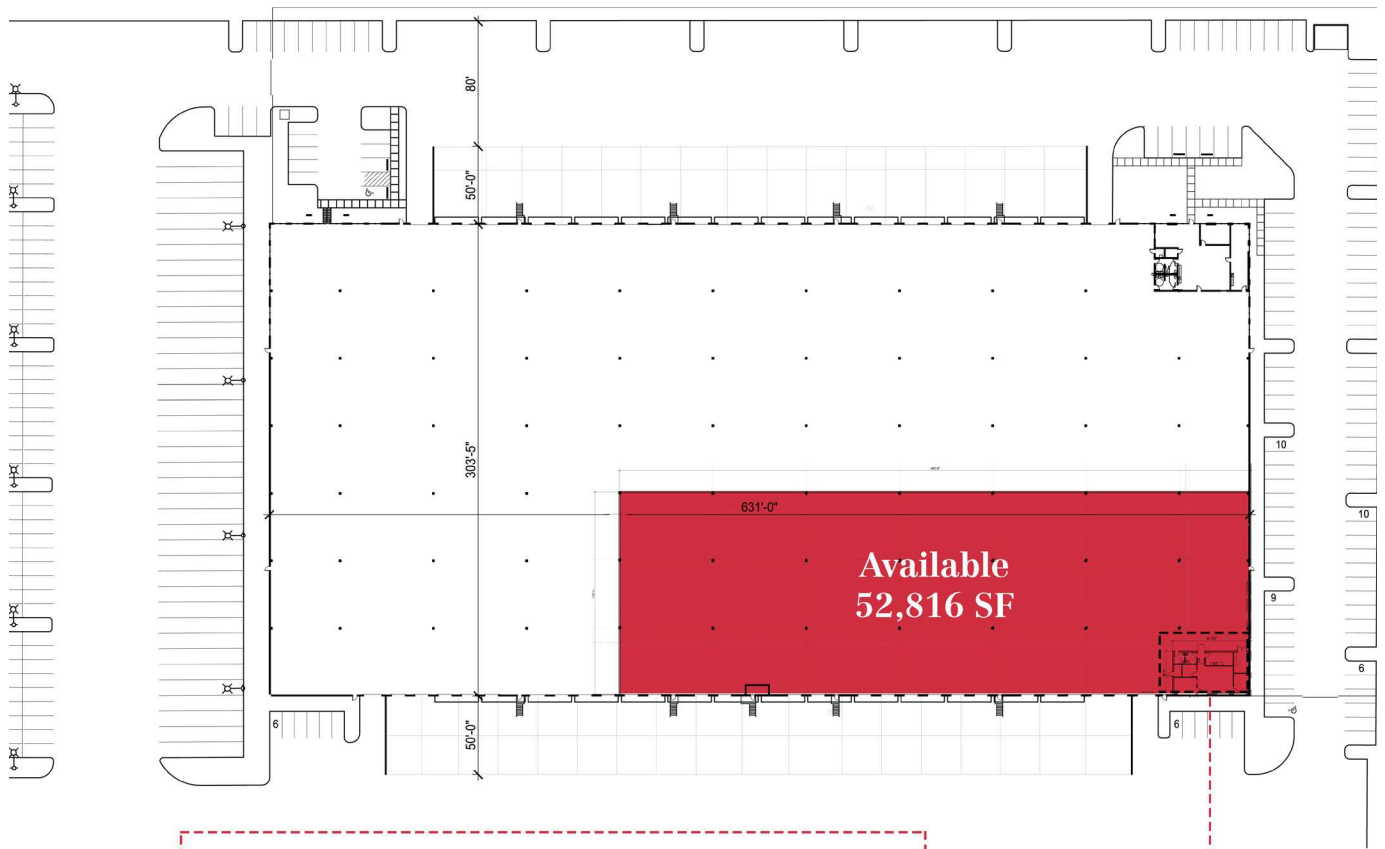
Associate Vice President  
+1 425 586 5617  
bmatysik@nai-pp.com



THE INFORMATION CONTAINED HEREIN HAS BEEN GIVEN TO US BY THE OWNER OF THE PROPERTY OR OTHER SOURCES WE DEEM RELIABLE, WE HAVE NO REASON TO DOUBT ITS ACCURACY, BUT WE DO NOT GUARANTEE IT. ALL INFORMATION SHOULD BE VERIFIED PRIOR TO PURCHASE OR LEASE.

[nai-pp.com](http://nai-pp.com)

# Floor Plan



**JEFF FORSBERG, CCIM**  
Principal  
+1 425 586 5610  
jforsberg@nai-psp.com

**ARIE SALOMON, SIOR, CCIM**  
Principal  
+1 425 586 5636  
asalomon@nai-psp.com

**BRET MATYSIK**  
Associate Vice President  
+1 425 586 5617  
bmatysik@nai-psp.com

