

FOR LEASE

OLYMPIC OFFICE PLAZA

1200 S 192ND ST, SEATAC, WA

Office building located in SeaTac for lease

SUITE AVAILABILITY

Suite #	Total RSF	Date Available
SUITE 100	1,923	11/1/24
SUITE 101	3,953	11/1/24
SUITE 201	1,843	Now
SUITE 202	542	Now
SUITE 203	1,013	Now
SUITE 204	1,358	Now
SUITE 205	599	Now
SUITE 300	1,140	11/1/24
SUITE 301	4,193	11/1/24

SUITES
AVAILABLE

CALL
FOR RATES

SPENCER CLAPP
206.248.7427
spencer.clapp@kidder.com

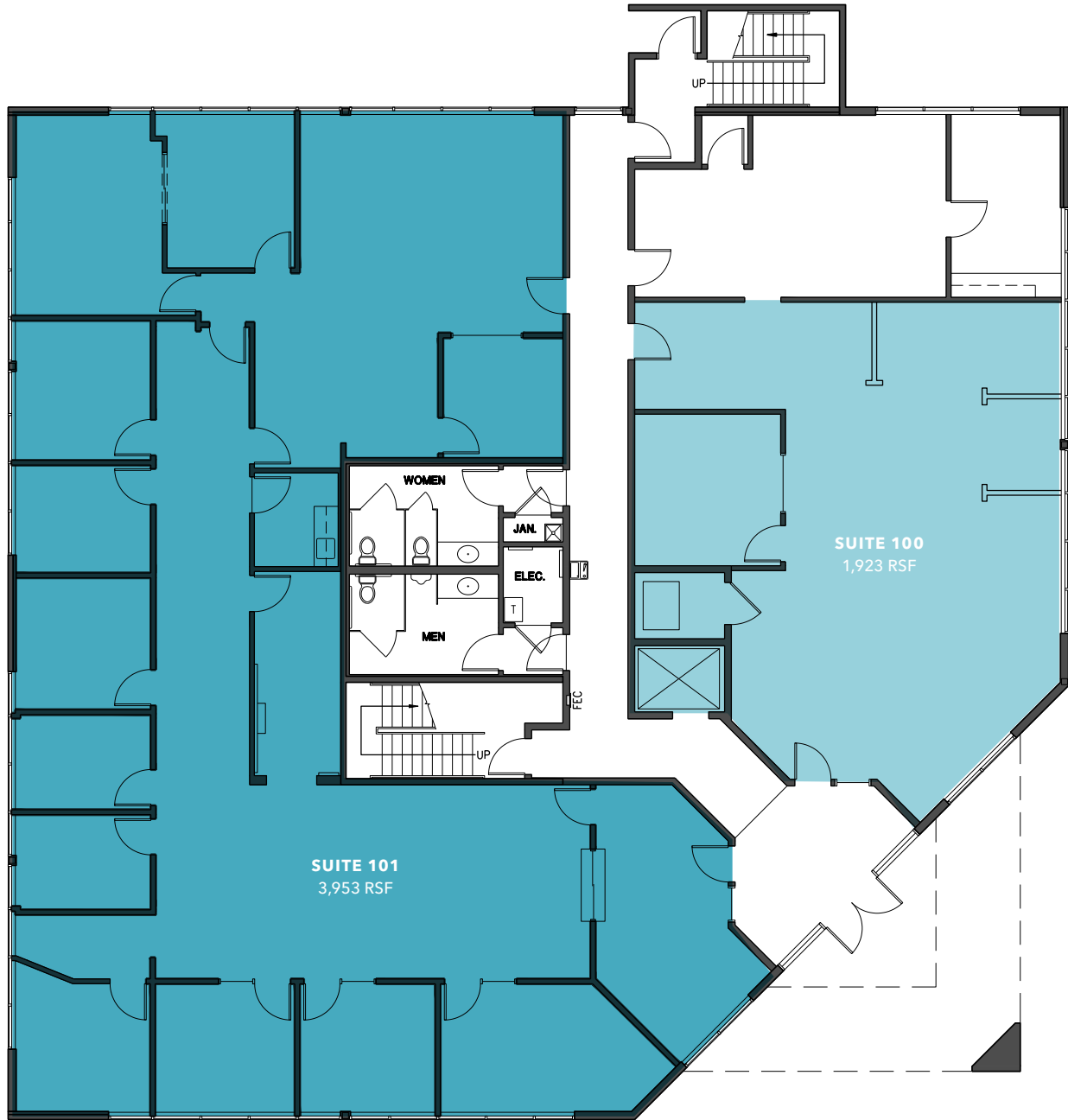
DOUG KLEIN, SIOB
206.248.7348
doug.klein@kidder.com

[KIDDER.COM](https://www.kidder.com)

This information supplied herein is from sources we deem reliable. It is provided without any representation, warranty, or guarantee, expressed or implied as to its accuracy. Prospective Buyer or Tenant should conduct an independent investigation and verification of all matters deemed to be material, including, but not limited to, statements of income and expenses. Consult your attorney, accountant, or other professional advisor.

 **Kidder
Mathews**

First Floor Plan



SPENCER CLAPP
206.248.7427
spencer.clapp@kidder.com

DOUG KLEIN, SIOB
206.248.7348
doug.klein@kidder.com

KIDDER.COM

This information supplied herein is from sources we deem reliable. It is provided without any representation, warranty, or guarantee, expressed or implied as to its accuracy. Prospective Buyer or Tenant should conduct an independent investigation and verification of all matters deemed to be material, including, but not limited to, statements of income and expenses. Consult your attorney, accountant, or other professional advisor.



Second Floor Plan



SPENCER CLAPP
206.248.7427
spencer.clapp@kidder.com

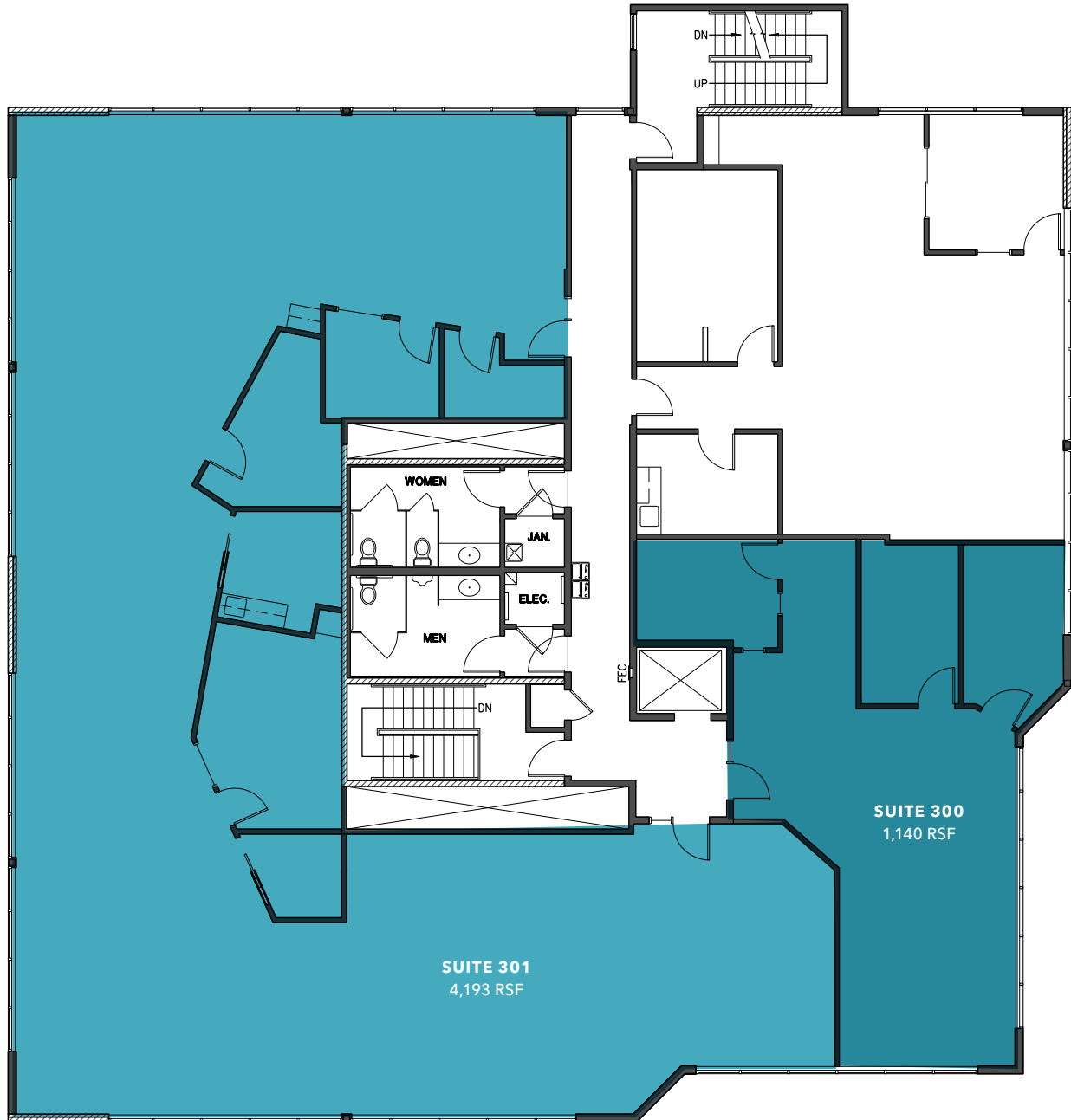
DOUG KLEIN, SIOR
206.248.7348
doug.klein@kidder.com

KIDDER.COM

This information supplied herein is from sources we deem reliable. It is provided without any representation, warranty, or guarantee, expressed or implied as to its accuracy. Prospective Buyer or Tenant should conduct an independent investigation and verification of all matters deemed to be material, including, but not limited to, statements of income and expenses. Consult your attorney, accountant, or other professional advisor.



Third Floor Plan



SPENCER CLAPP
206.248.7427
spencer.clapp@kidder.com

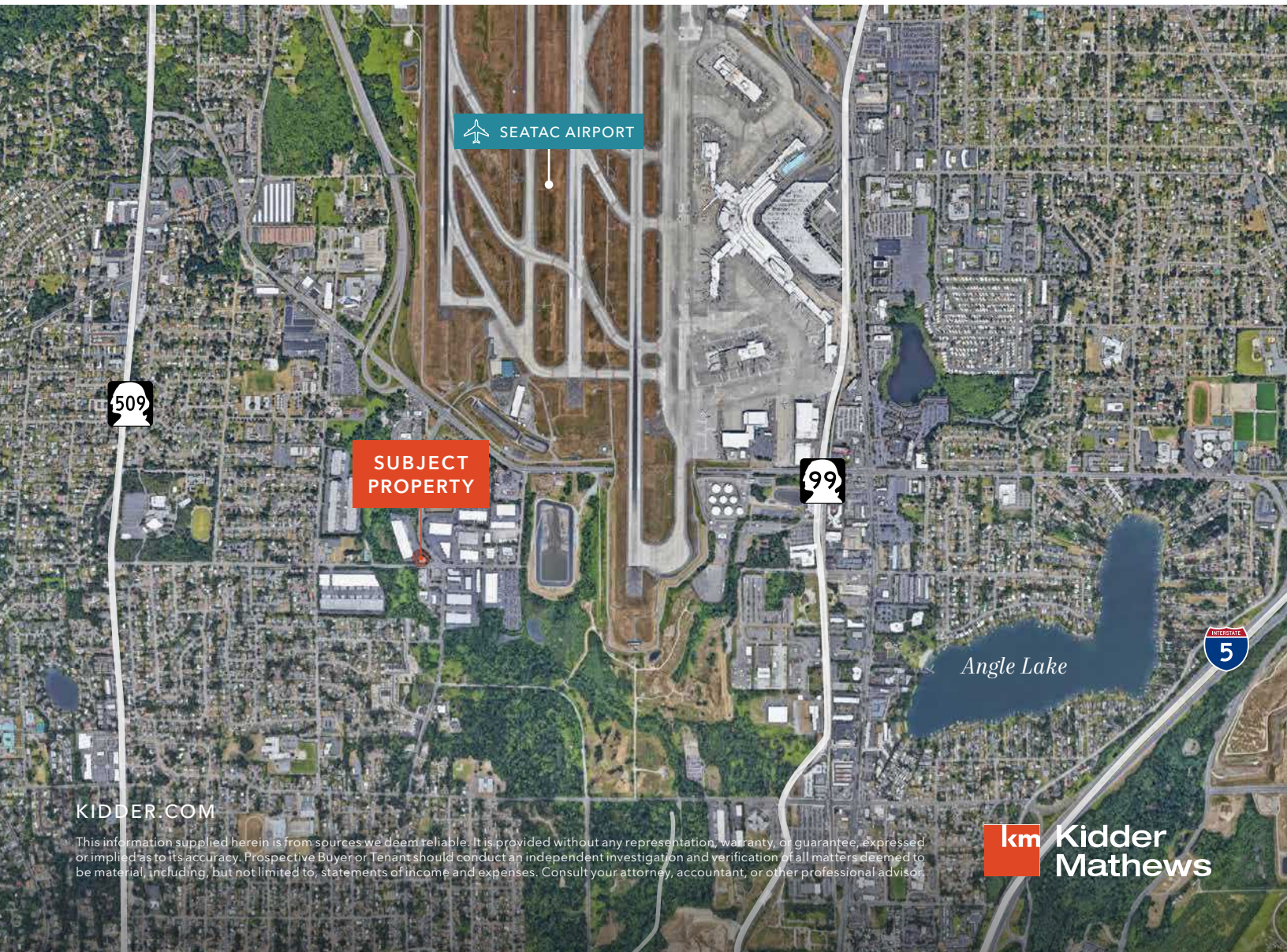
DOUG KLEIN, SIOR
206.248.7348
doug.klein@kidder.com

KIDDER.COM

This information supplied herein is from sources we deem reliable. It is provided without any representation, warranty, or guarantee, expressed or implied as to its accuracy. Prospective Buyer or Tenant should conduct an independent investigation and verification of all matters deemed to be material, including, but not limited to, statements of income and expenses. Consult your attorney, accountant, or other professional advisor.



OLYMPIC OFFICE PLAZA



KIDDER.COM

This information supplied herein is from sources we deem reliable. It is provided without any representation, warranty, or guarantee, expressed or implied as to its accuracy. Prospective Buyer or Tenant should conduct an independent investigation and verification of all matters deemed to be material, including, but not limited to, statements of income and expenses. Consult your attorney, accountant, or other professional advisor.

km Kidder Mathews