



2020 E MADISON STREET
SEATTLE, WA 98122

RETAIL/OFFICE FOR LEASE
AVAILABLE NOW



FOR MORE INFORMATION PLEASE CONTACT:

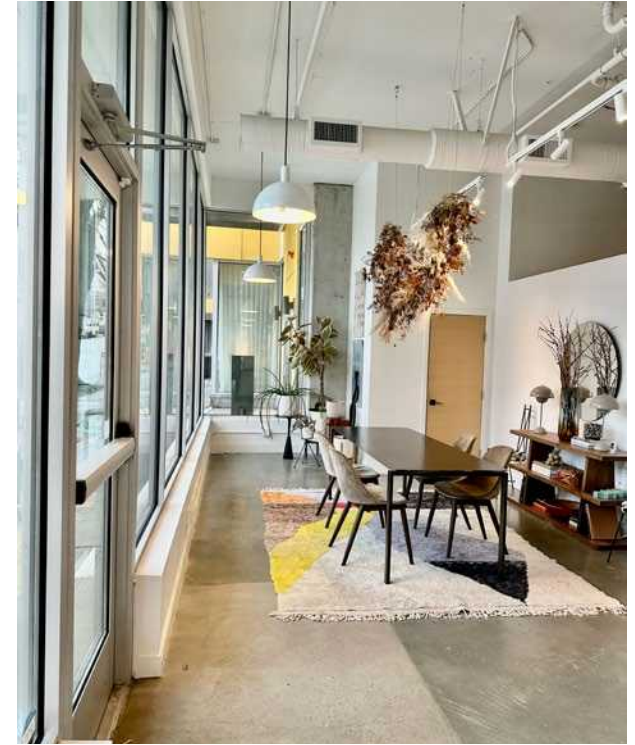
TRACY CORNELL

tracyc@gibraltarus.com
206.948.0630

LAURA MILLER

laura@gibraltarus.com
206.351.3573





PROJECT OVERVIEW

WWW.20TWENTYMAD.COM

Located on the east edge of the Capitol Hill neighborhood of Seattle, Twenty20 Mad is a modern-designed, mixed use project completed in 2018 and comprised of 151 apartments above 2,507 sq ft of retail project that fronts East Madison Street, a major corridor with direct access to the downtown core including the city's best restaurants, neighborhood retail, shops, bars. Co-tenant is 30 Minute Hit.

DEMOGRAPHICS

POPULATION	86,855
HOUSEHOLDS	48,403
AVERAGE HH INCOME	\$109,050
DAYTIME POPULATION	74,981

* 2023 DEMOGRAPHICS BASED ON A 1-MILE RADIUS

93
WALK
SCORE

93
BIKE
SCORE



**AVAILABLE
OFFICE/RETAIL**

SIZE (RSF)

LEASE RATE

**NNN RATE
EST. 2024**

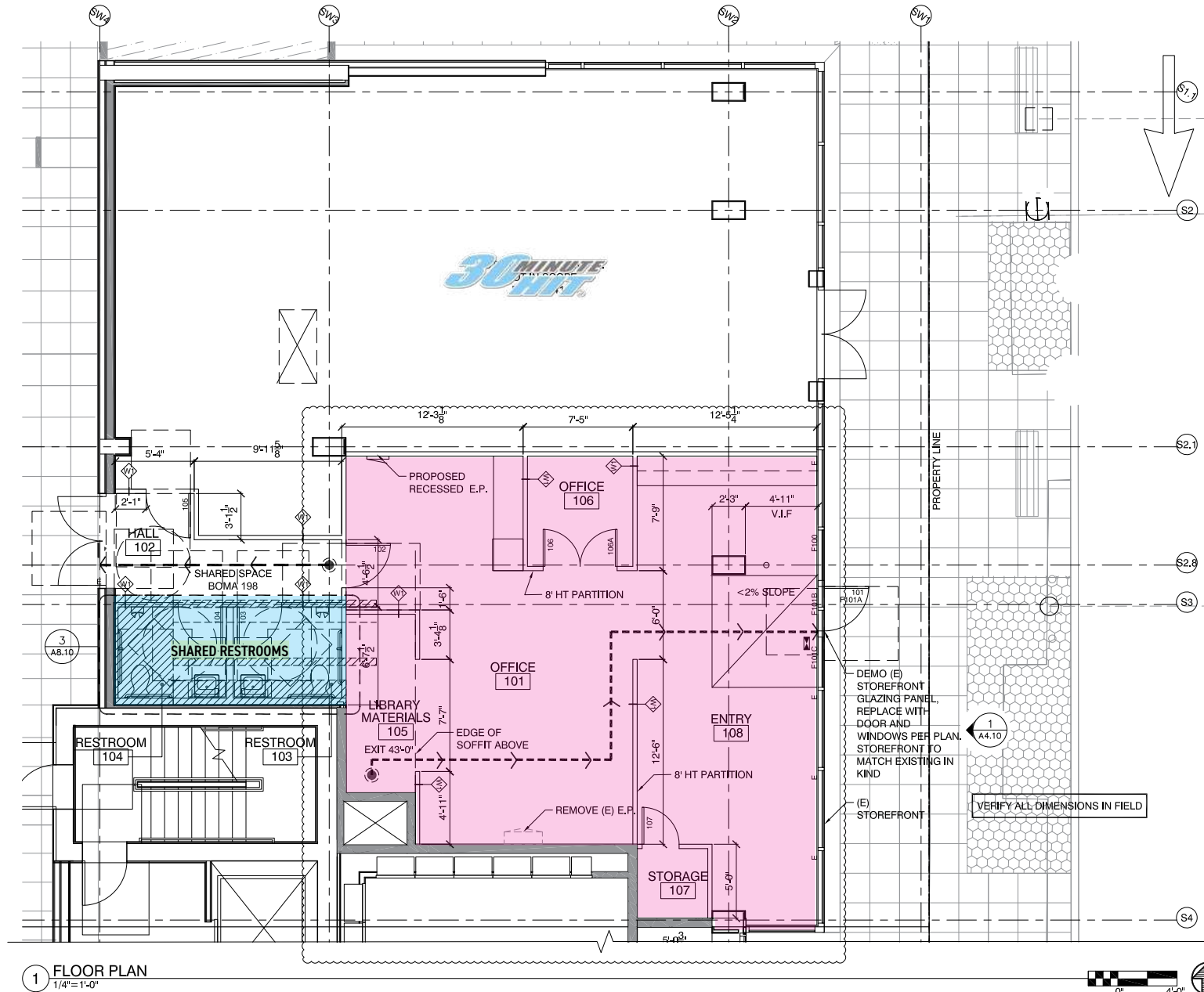
DESCRIPTION

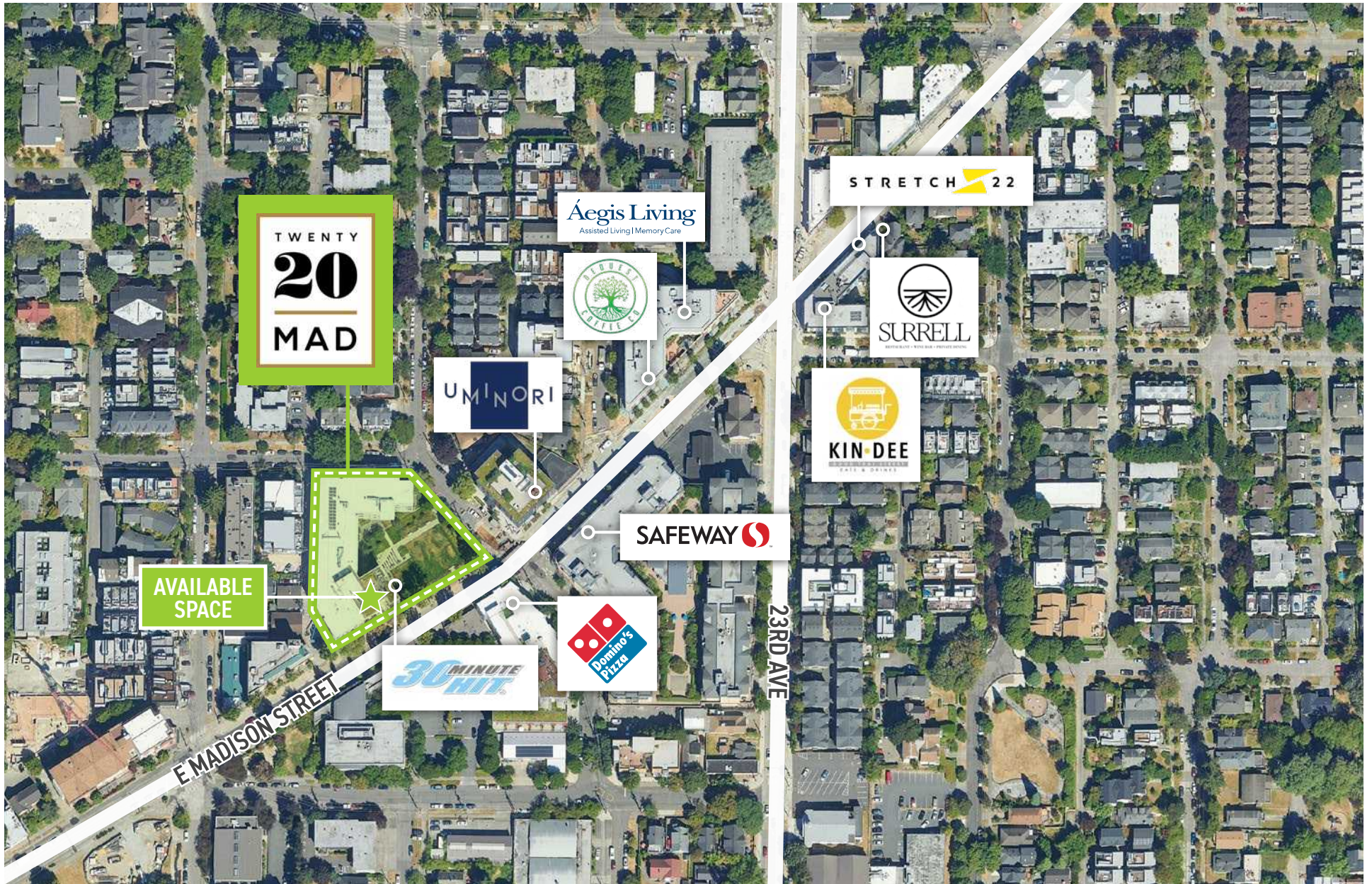
1,021 SF

\$28/SF

\$8

- Currently built out as interior design office
- Modern design features, concrete floors, large storefront windows, bright finishes, HVAC
- \$2,383 monthly rate
- Ideal for office, retail, salon, physical therapy





FOR MORE INFORMATION PLEASE CONTACT:

TRACY CORNELL

tracyc@gibraltarusa.com

206.948.0630

LAURA MILLER

laura@gibraltarusa.com

206.351.3573



This information has been obtained from sources believed reliable. No guarantee, warranty or representation, express or implied, is made as to the accuracy of the information contained herein, and same is submitted subject to errors, omissions, change of price, rental or other conditions withdrawal without notice, and to any special listing conditions, imposed by our principals. Any projections, opinions, assumptions or estimates used are for example only and do not represent the current or future performance of the property.