

# ELLIS COURT

2510 WESTERN AVENUE  
SEATTLE, WA 98121

---

±2,826 SF Penthouse Office Space



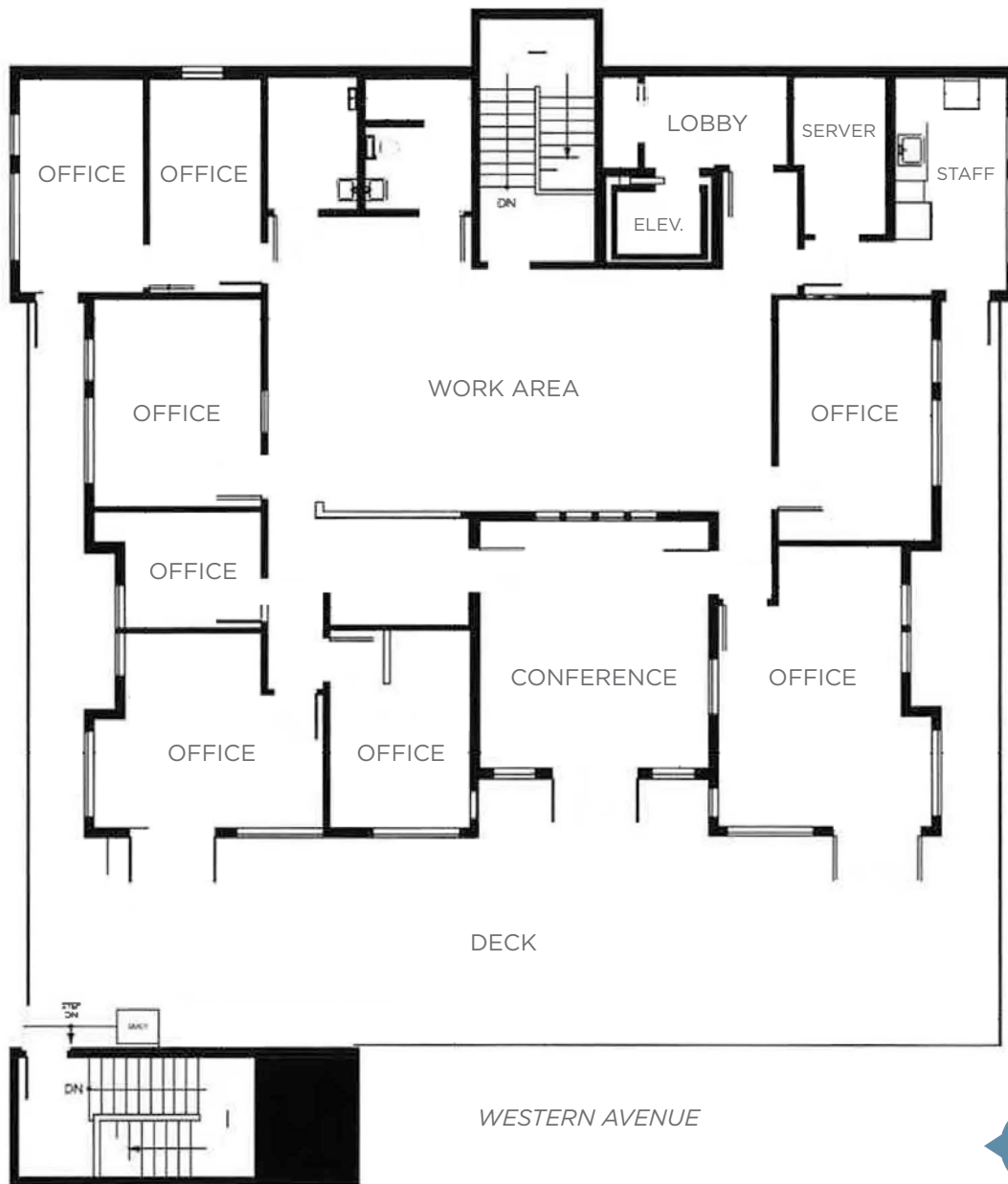


# PROPERTY HIGHLIGHTS/

- 2,826 SF penthouse office space
- Large West-facing deck
- 2 garage parking stalls
- Secure entrance
- 8 private office
- Open workspace area with skylights
- Large conference room
- Kitchenette
- Water views
- **Contact broker for pricing details**

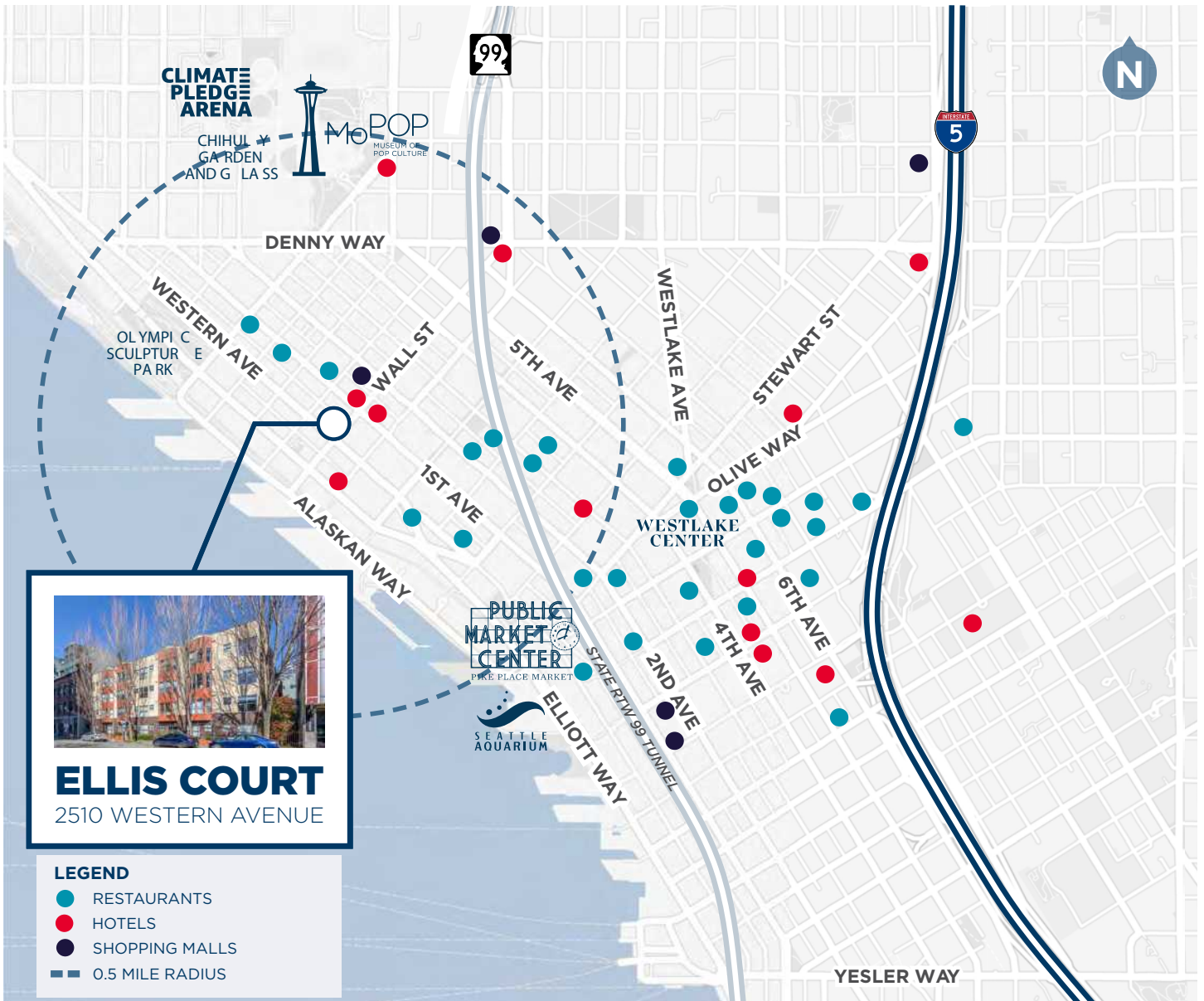
# FLOOR PLAN

## PENTHOUSE OFFICE - ±2,826 SF



# PROPERTY IMAGES/





**ELLIS COURT**  
2510 WESTERN AVENUE

- LEGEND**
- RESTAURANTS
  - HOTELS
  - SHOPPING MALLS
  - 0.5 MILE RADIUS

 **WALK SCORE**


**95**

WALKER'S PARADISE

 **TRANSIT SCORE**

**95**

RIDER'S PARADISE

 **BIKE SCORE**

**71**

VERY BIKEABLE

## CONTACT

**LEAH MASSON**  
Senior Director  
+1 206 215 9803  
leah.masson@cushwake.com



601 Union Street | Seattle, WA 98101 | cushmanwakefield.com

©2024 Cushman & Wakefield. All rights reserved. The information contained in this communication is strictly confidential. This information has been obtained from sources believed to be reliable but has not been verified. No warranty or representation, express or implied, is made as to the condition of the property (or properties) referenced herein or as to the accuracy or completeness of the information contained herein, and same is submitted subject to errors, omissions, change of price, rental or other conditions, withdrawal without notice, and to any special listing conditions imposed by the property owner(s). Any projections, opinions or estimates are subject to uncertainty and do not signify current or future property performance.