



# THE OFFICES AT **RIVERPARK**

a **KBS** property

FOR LEASE



15809 BEAR CREEK PARKWAY | REDMOND, WA 98052

Proudly leased  
and managed by

**CBRE**



# BUILDING DETAILS

<b>Building Size</b>	±107,029 RSF Class A Office Building
<b>Green Construction</b>	LEED Silver Certified, Energy Star Rated & Verified-Healthy Building for Indoor Air
<b>Parking</b>	3.0/1,000 RSF of covered parking at \$75.00/stall/month
<b>2024 Estimated Operating Expenses</b>	\$13.41/SF
<b>Light Rail</b>	Walking distance to the Downtown Redmond Light Rail Station
<b>Building Improvements</b>	New Tenant Amenity Center Renovated Renovated Building Lobby



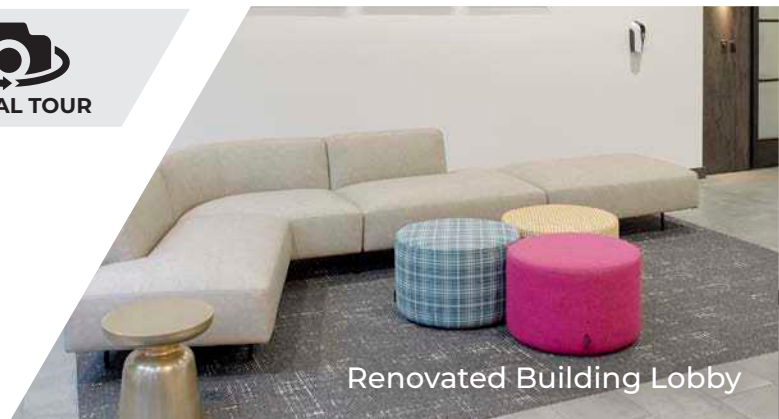
# AVAILABLE SPACE

Suite 400: 14,975 RSF Available Now



**VIRTUAL TOUR**

The suite can be demised into a smaller size of 11,903 RSF

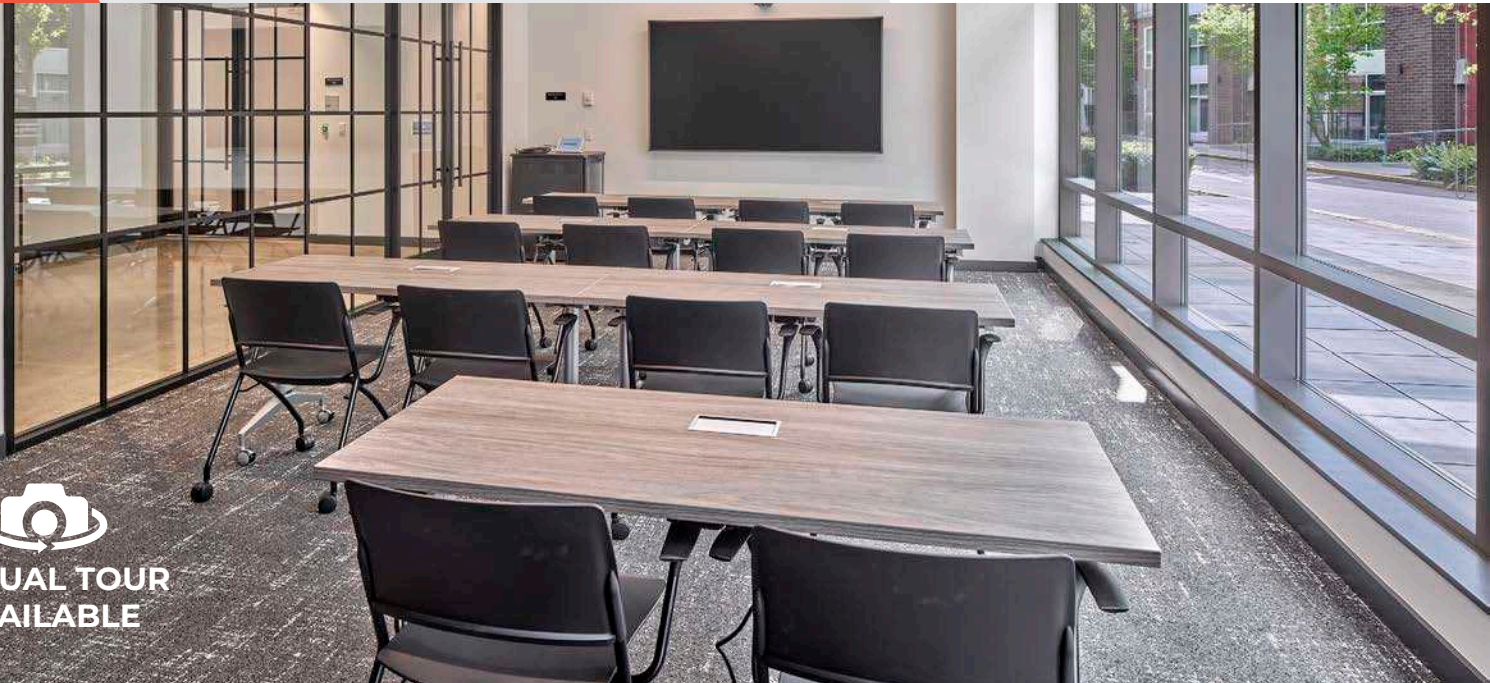


Renovated Building Lobby

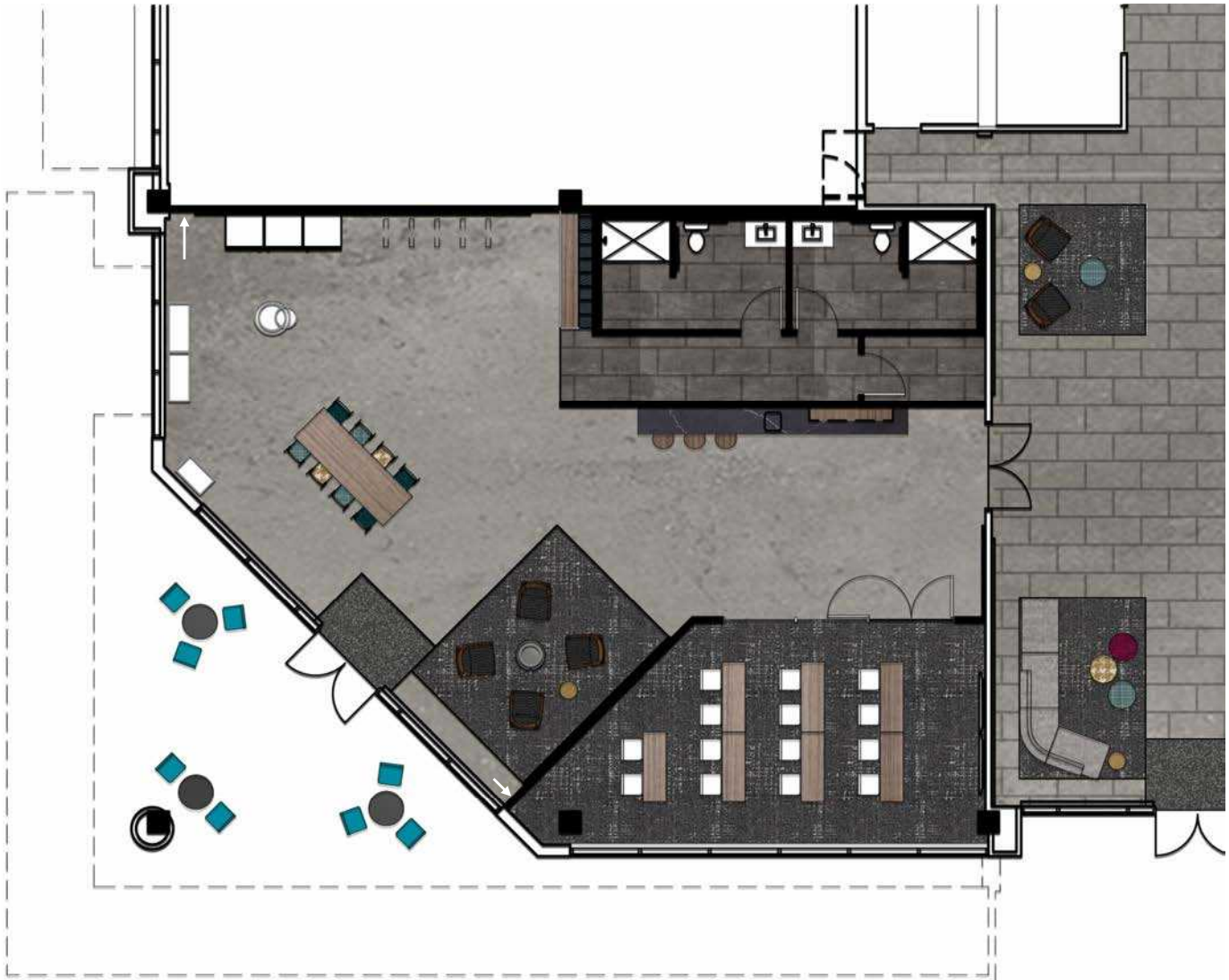
# SITE DETAILS



# TENANT AMENITY CENTER



VIRTUAL TOUR  
AVAILABLE



## AMENITY CENTER FEATURES



Conference / Training Room



Lounge Seating



Casual Meeting Spaces



Bike Racks



Coffee Bar



Lockers & Showers



Arcade Games



# THE NEW REDMOND

Surrounded by housing,  
entertainment opportunities  
and retail amenities



Redmond Link  
light rail extension



**36**

is the median age  
in Redmond



**700+**

new apartment units  
under construction  
in downtown Redmond





# THE OFFICES AT RIVERPARK

a **KBS** property

## CONTACT INFO

### SCOTT DAVIS

Executive Vice President

+1 425 462 6912

[scott.davis@cbre.com](mailto:scott.davis@cbre.com)

### TIM OWENS

Senior Vice President

+1 425 462 6913

[tim.owens@cbre.com](mailto:tim.owens@cbre.com)

© 2024 CBRE, Inc. All rights reserved. This information has been obtained from sources believed reliable, but has not been verified for accuracy or completeness. You should conduct a careful, independent investigation of the property and verify all information. Any reliance on this information is solely at your own risk. CBRE and the CBRE logo are service marks of CBRE, Inc. All other marks displayed on this document are the property of their respective owners. Photos here in are the property of their respective owners. Use of these images without the express written consent of the owner is prohibited. DW 7.25.24

CBRE, INC. | 929 108TH AVENUE NE | SUITE 700 | BELLEVUE, WA 98047

Proudly leased  
and managed by

**CBRE**