



FOR LEASE

6719 S 211th St
Kent, WA 98032



WEST VALLEY AT 212TH
Jameson Sullivan

First Western Properties—Tacoma Inc. | 253.472.0404
6402 Tacoma Mall Blvd, Tacoma, WA 98409 | fwp-inc.com

WEST VALLEY AT 212TH is situated in a primarily commercial and industrial area that benefits from good connectivity, with close proximity to major transportation routes such as the Pacific Highway South and State Route 167. The neighborhood is also relatively close to Seattle-Tacoma International Airport, adding to its logistical advantages.

AVAILABLE

- ◇ 1,195 SF \$32.00 PSF + NNN
- ◇ 2,820 SF \$32.00 PSF + NNN
- ◇ 4,100 SF \$32.00 PSF + NNN

- **Endcap space** located next to Starbucks
- **Close access** to Interstate 5
- **Center is located** on a main intersection
- **Located** next to The Hampton Inn & Suites Hotel
- **Amazon Fulfillment Center:** 700+ employees
- **Heavy traffic** from nearby industries.



Population



Average HH Income



Daytime Population

Regis - 2024

	Population	Average HH Income	Daytime Population
Mile 1	779	\$108,504	15,753
Mile 3	90,797	\$118,916	115,151
Mile 5	269,395	\$129,043	240,431

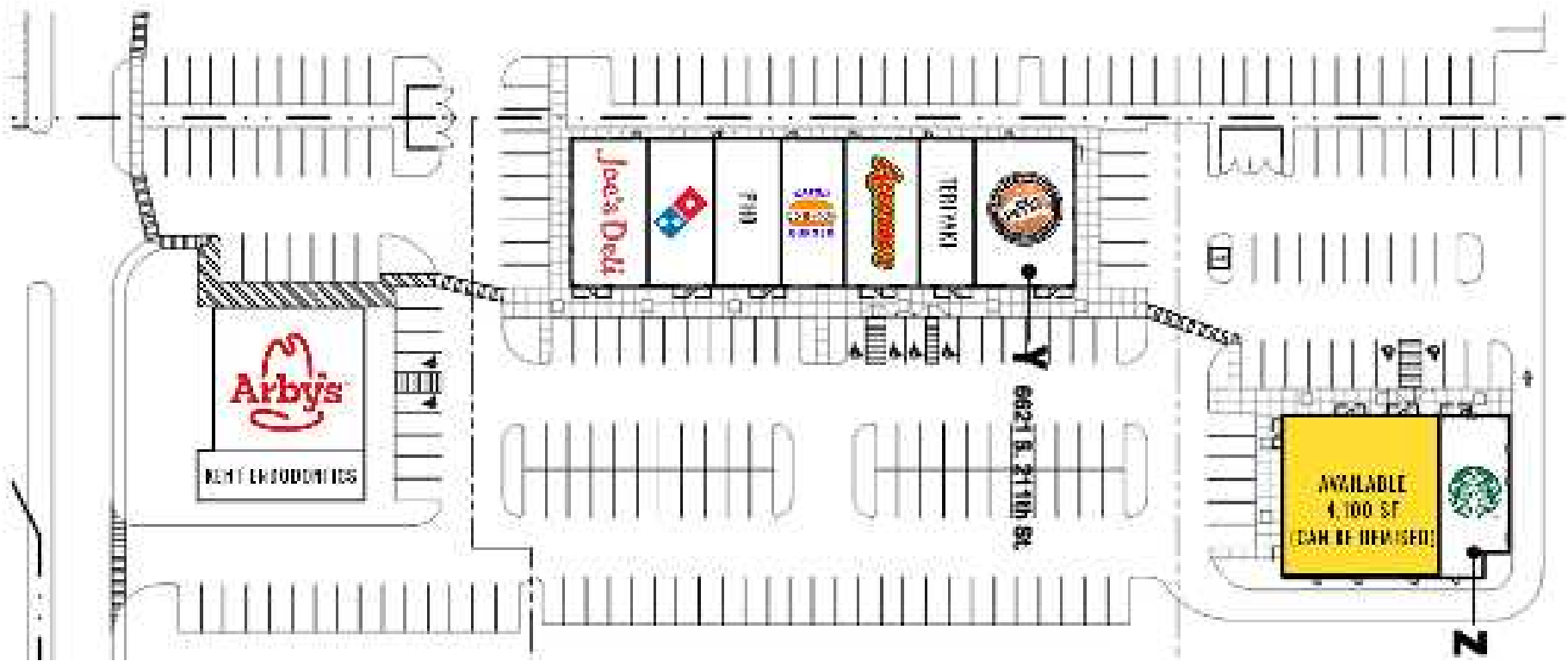
TENANTS



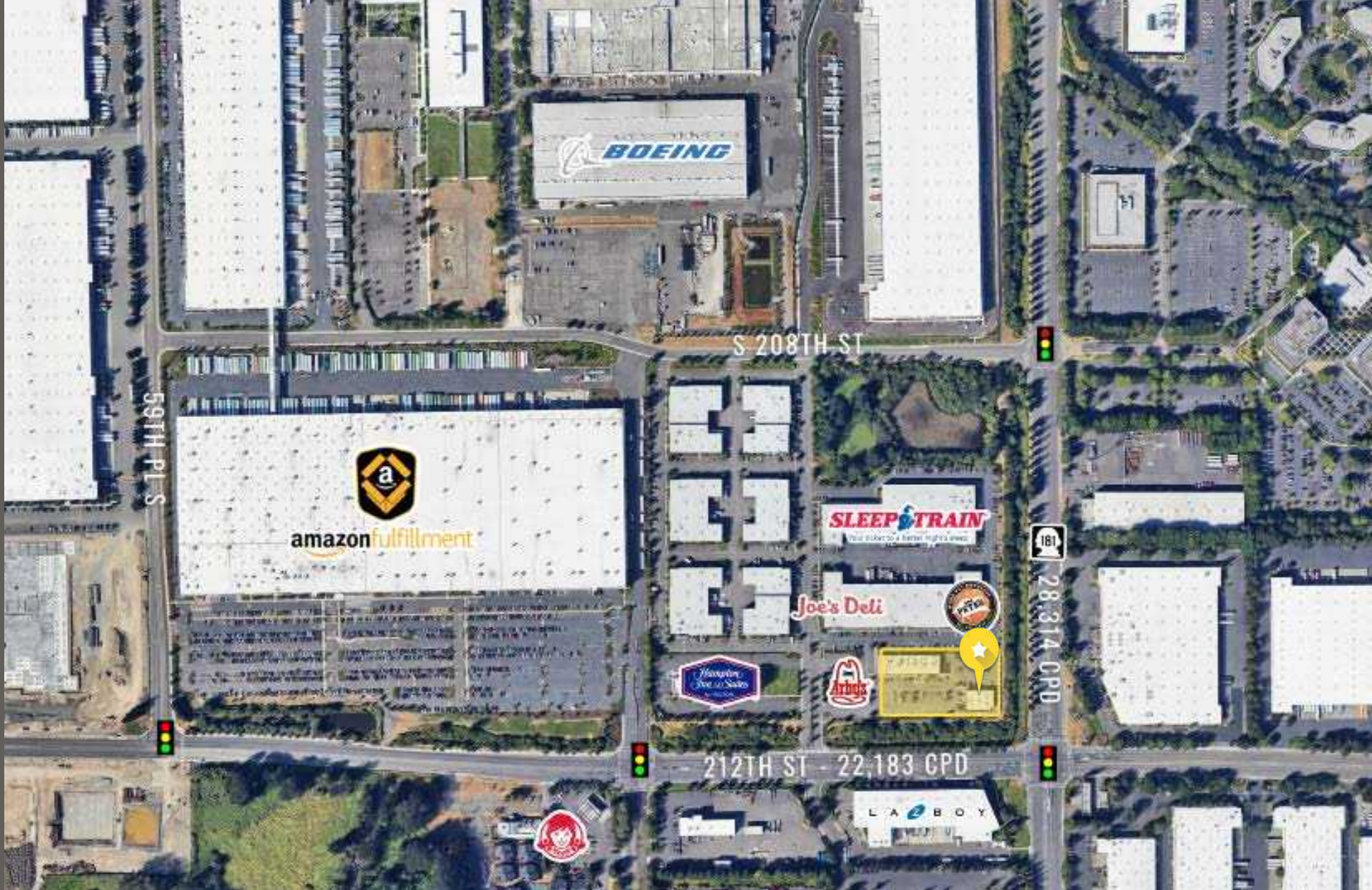
Joe's Deli



SITE PLAN



LOCATION DETAILS



Located on
Kent's Valley HWY



Access provided
from 212th Street

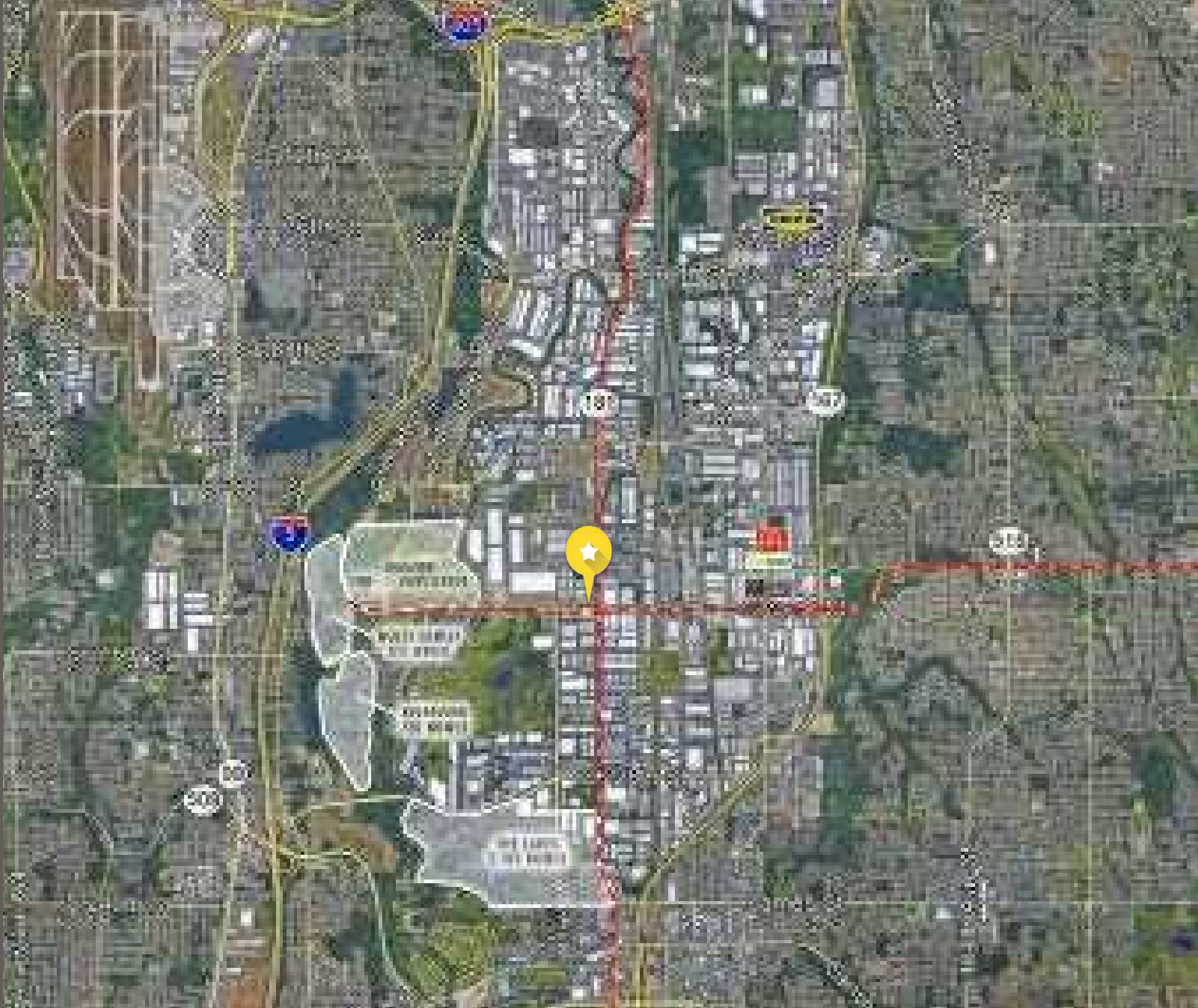


22,183 CPD
212th Street



28,314 CPD
SR-181


LOCATION AERIAL



TACOMA | KIRKLAND | PORTLAND | SEATTLE

RELATIONSHIP FOCUSED.
RESULTS DRIVEN.

JAMESON SULLIVAN

 253.471.5508

 jsullivan@firstwesternproperties.com

WEST VALLEY @ 212TH

First Western Properties—Tacoma Inc. | 253.472.0404
6402 Tacoma Mall Blvd, Tacoma, WA 98409 | fwp-inc.com

© First Western Properties, Inc. DISCLAIMER: The above information has been secured from sources believed to be reliable, however, no representations are made to its accuracy. Prospective tenants or buyers should consult their professional advisors and conduct their own independent investigation. Properties are subject to change in price and/or availability without notice.

