

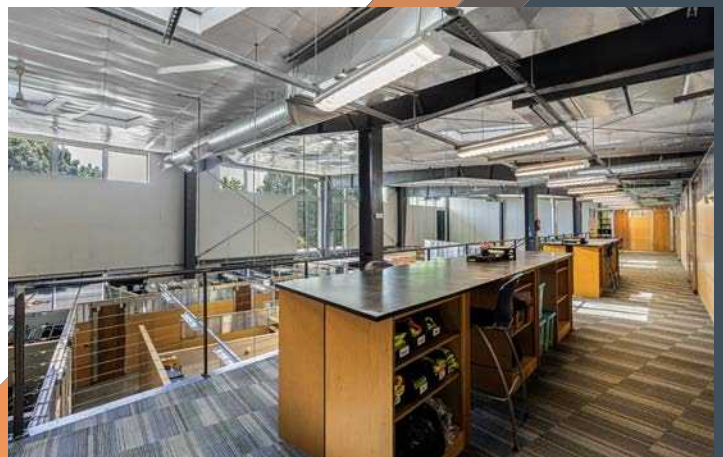
GEORGETOWN WORKS

Office / Flex space
For Sale or Lease
11,329 RSF Available

960 S Harney St.
Seattle, WA



Jones Lang LaSalle Americas, Inc. License #: CO508577000





SPACE DETAILS



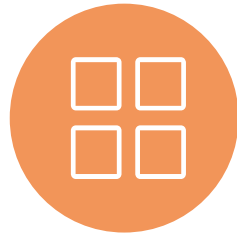
RECEPTION



LARGE KITCHEN &
BREAKROOM



16 PRIVATE
OFFICES



6 CUBICLES



BOARDROOM



2 MEETING
ROOMS



STORAGE



IT / SERVER
ROOM



PRIVATE
RESTROOMS



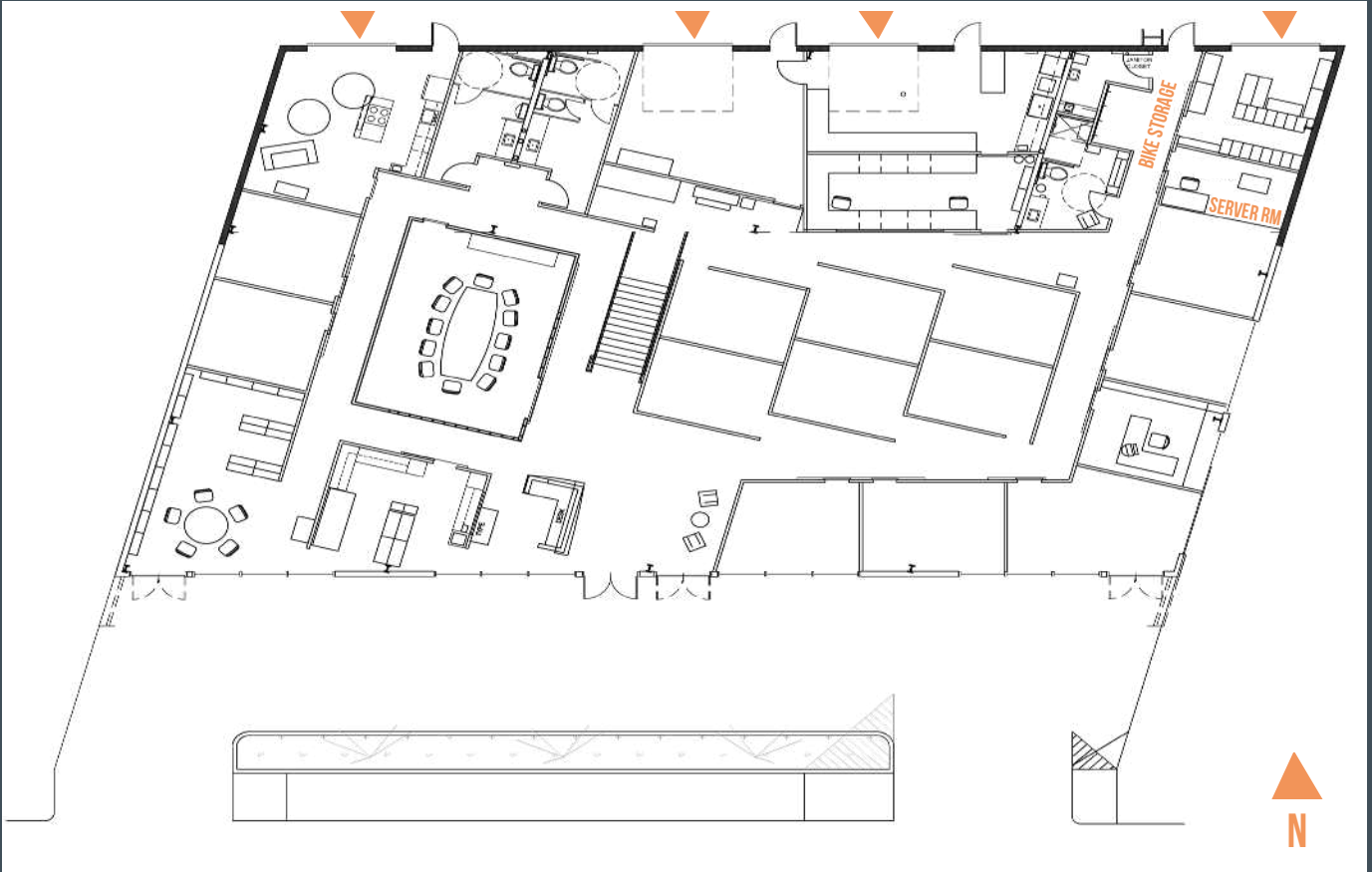
SHOWER WITH
LOCKERS



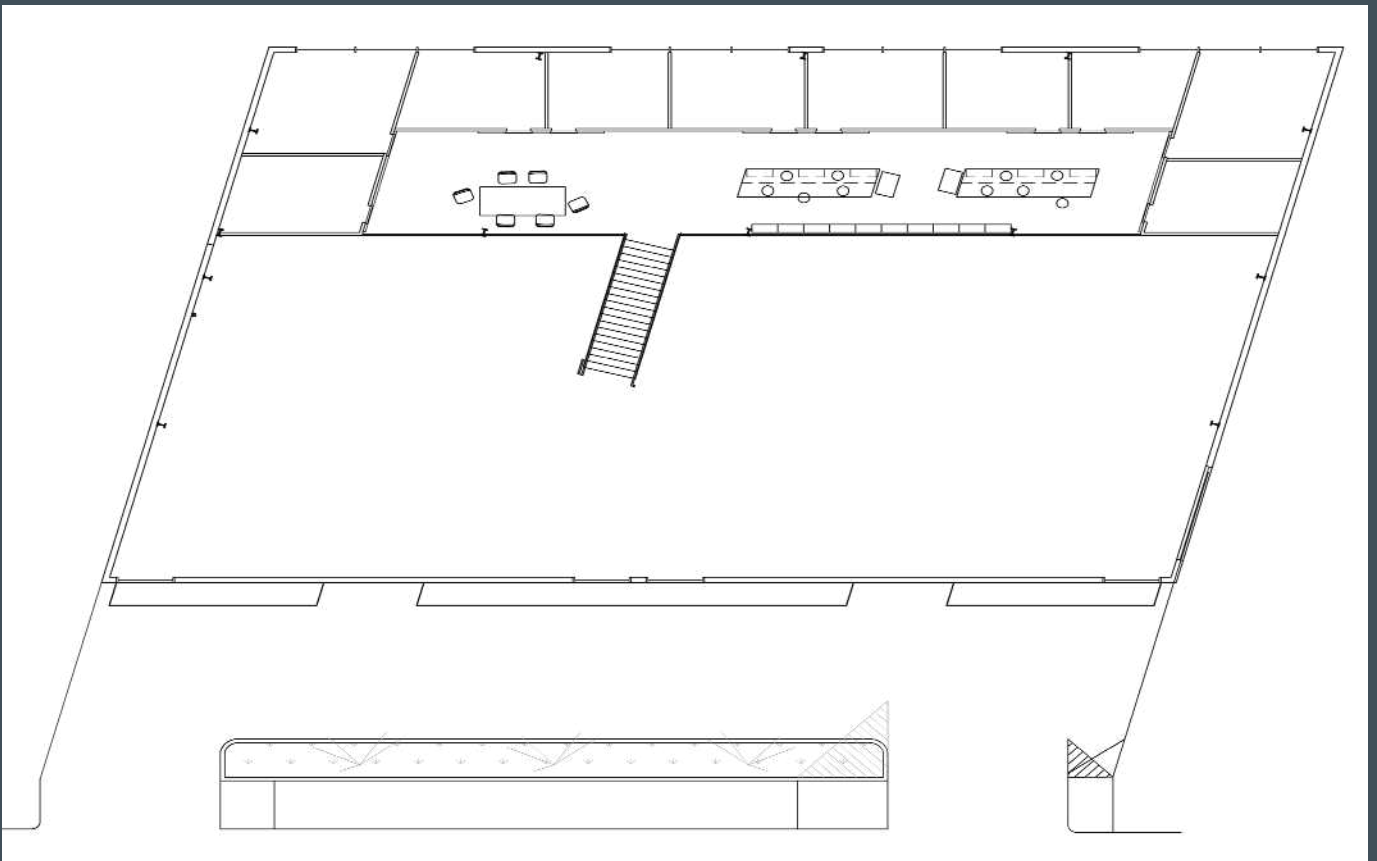
BUILDING FEATURES

- 4 grade-level roll up doors
- HVAC: 1 / 8.5 ton and 1 / 6 ton HVAC unit
- Power: 400 amps of 277/480 volt, 3-phase service
- Bike storage
- Secured access
- Immediate access to I-5
- Furniture available

FIRST FLOOR PLAN



MEZZANINE FLOOR PLAN



LOCATION

1.2 MILES

Boeing Field

4.5 MILES

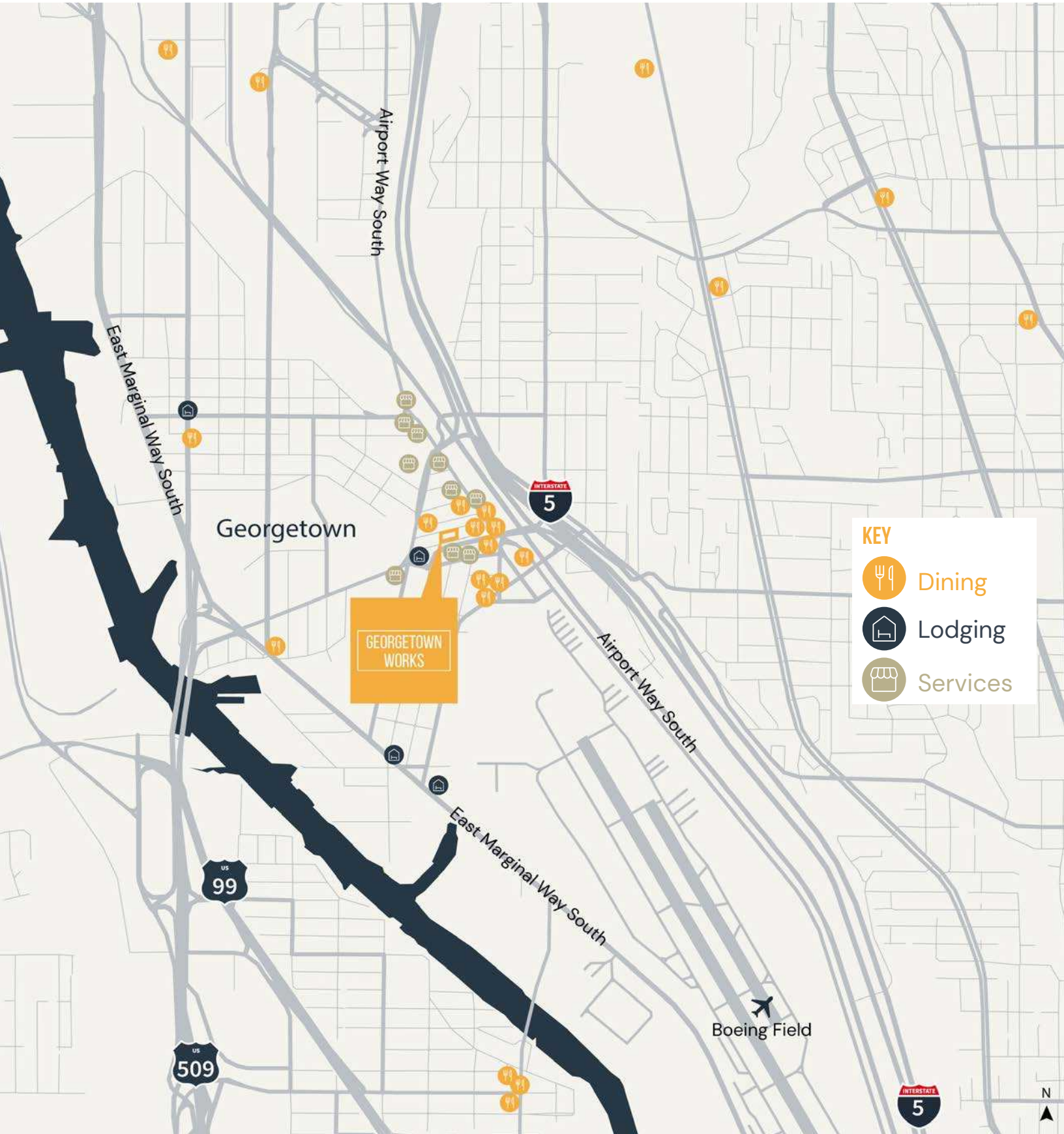
Downtown Seattle

9.3 MILES

SeaTac Airport

13.3 MILES

Downtown Bellevue



GEORGETOWN WORKS

960 S Harney St.
Seattle, WA



SCOTT CARTER

scott.carter@jll.com

+1 425 761 5880

BAILEY HALLIS

bailey.hallis@jll.com

+1 206 777 5203

CONNOR RAFFETY

connor.raffety@jll.com

+1 206 437 1006