

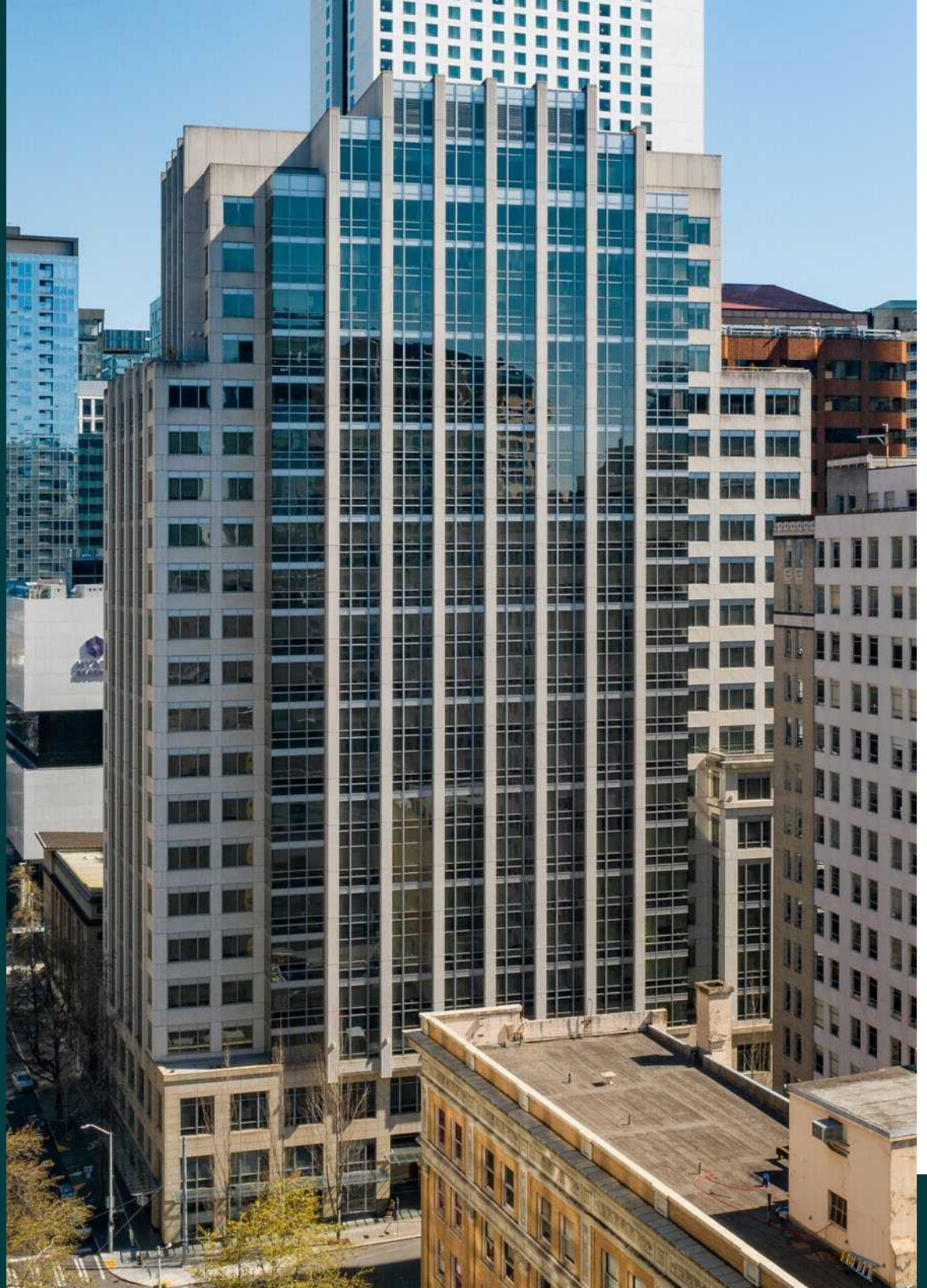
# 1700 TH AVE

Premier Class A+  
Office Tower in  
Downtown Seattle

CLISE  
PROPERTIES



NEWMARK



1700 7TH AVENUE — SEATTLE, WA





## THE BUILDING

Developed in 2001, 1700 7th is one of Seattle's Premier Class A+ office towers in Seattle.

At 24-stories with prominent street level retail, you are steps away from Nordstrom's flagship store, Pacific Place, and Seattle's retail core. 1700 7th is the perfect combination of access to amenities, the Washington State Convention Center, transportation and Seattle's lifestyle. With floorplates of 32,000 RSF on floors 3-9 and 21,000 RSF on floors 10-18, 1700 7th has the unique opportunity to accommodate Tenants' seeking large floor plates not often seen in the downtown core.





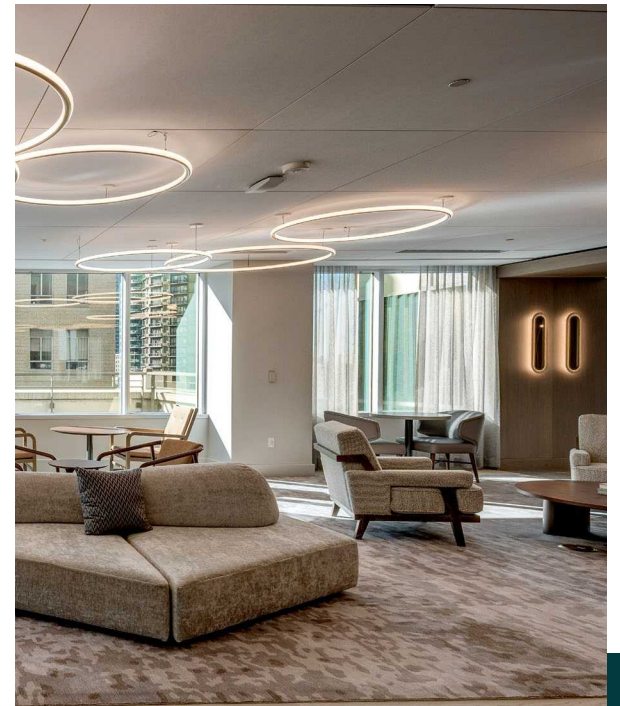
NEW 10TH FLOOR CONFERENCE CENTER



NEW 10TH FLOOR TENANT LOUNGE AND COLLABORATION SPACE



NEW 10TH FLOOR TENANT DECK



NEW 10TH FLOOR TENANT LOUNGE

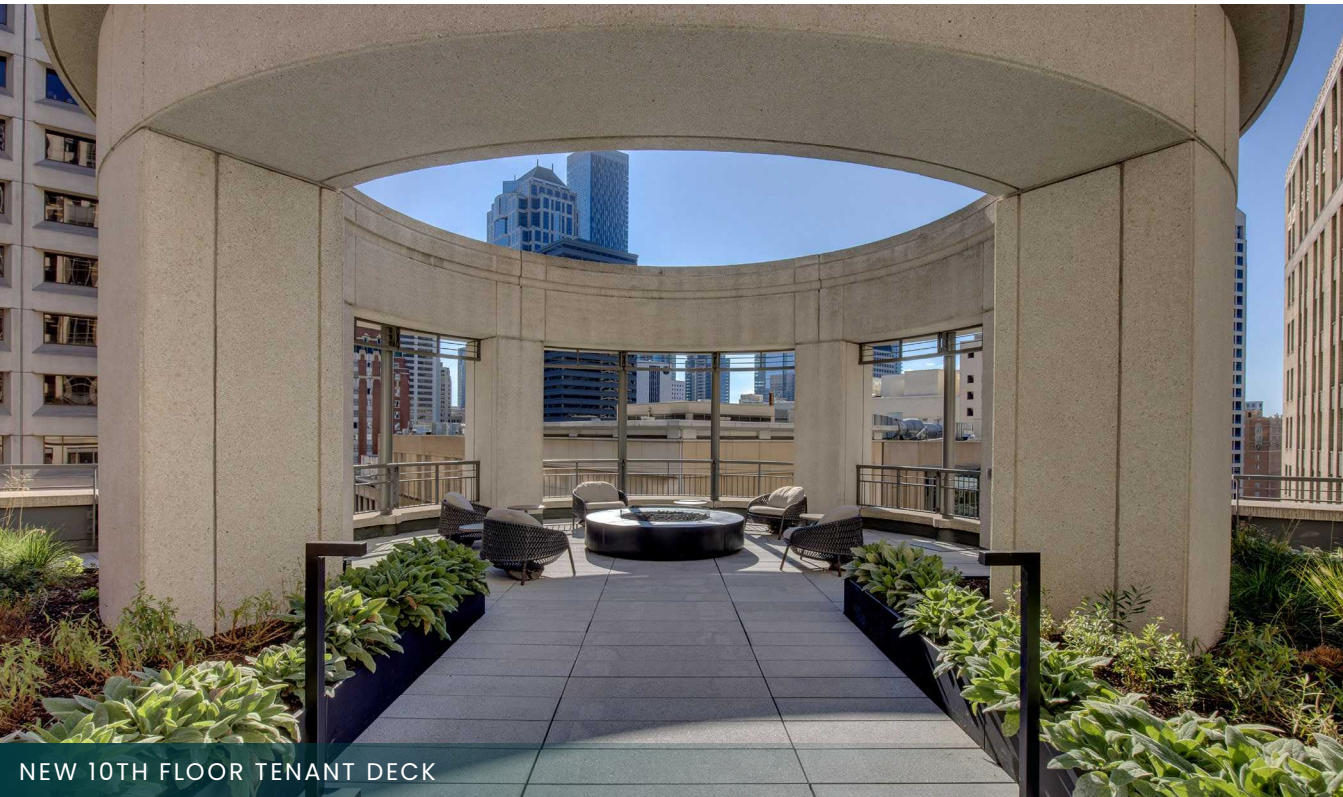




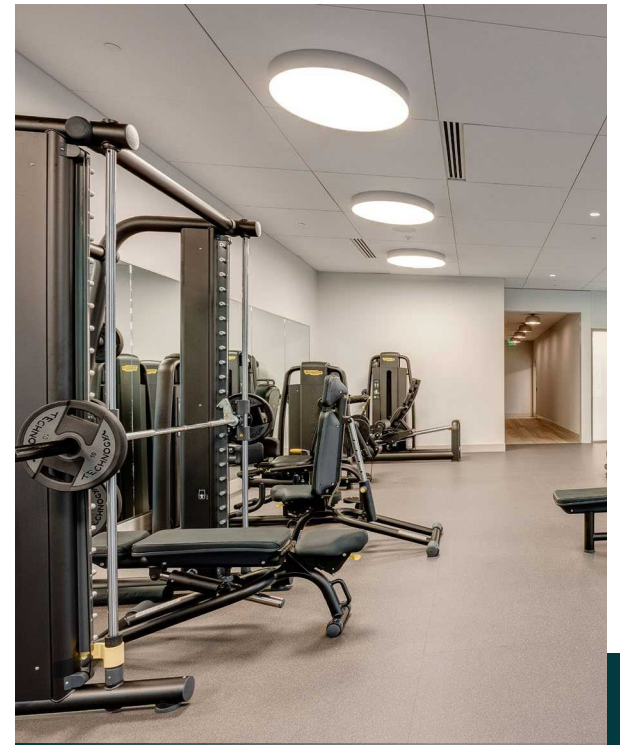
NEW BIKE ROOM



NEW 10TH FLOOR TENANT RESTAURANT



NEW 10TH FLOOR TENANT DECK



NEW 3RD FLOOR FITNESS CENTER



# BUILDING AMENITIES

- 10th floor Café & Amenity space leading to a 10,000 SF private tenant and guest only deck for employee enjoyment
- Floor to ceiling windows providing 25% more natural light
- Seattle-based, best-in-class on-site ownership and management
- Starbucks & UPS Store on-site
- Building concierge & security guard in main lobby
- Building Disaster Response Center-telecommunications and connectivity capabilities
- On-site storage
- Underground, attended, access-controlled parking garage with 591 stalls, including an executive level reserved parking with a dedicated exit.

# RECENT RENOVATIONS

## FLOOR 10 AMENITIES:

- New fitness center
- New conference center
- New tenant lounge
- New food operator
- Updated patio and outdoor event area

## GROUND LEVEL BIKE STORAGE:

- New locker rooms
- New showers
- Drying room
- Electric vehicle charging stations







## AVAILABILITIES

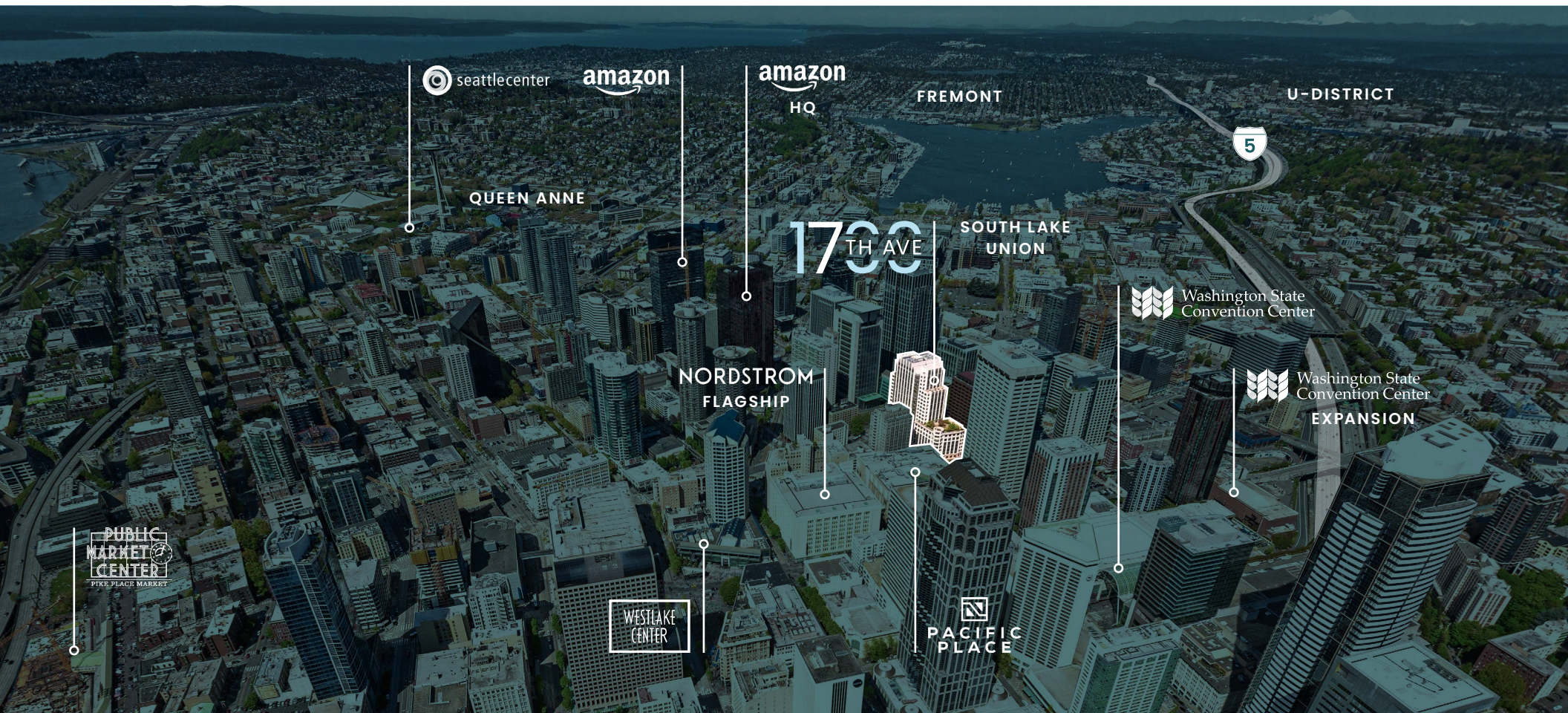
FLOOR	SIZE	DIVISIBLE TO	FLOORPLATES	AVAILABILITY
3-9	±220,215	10,000	±32,000	Now
10	11,082			Now
11 (Spec Suites)	2,534 - 8,667	2,534		Now
12-14	±62,786	3,500	±21,000	Now
15	9,977			
16 (Spec Suite)	12,873			Now
3-16	±337,363 RSF			Now



# THE NEIGHBORHOOD

Located on 7th Avenue between Olive and Stewart, 1700 7th offers one of Seattle's best office locations between growing South Lake Union and the Seattle Retail district.

With growth from Amazon and other Tech companies to the North creating some of Seattle's best restaurants, bars and retail, and its close proximity to the downtown core and historic Pike Place Market, 1700 7th offers Tenant's the best mix of both areas in one. Nearby hotels include The Westin, Elliott Grand Hyatt, The Sheraton, Hotel Max, and The Paramount Hotel. 1700 Seventh Avenue is just two blocks west of the newly expanded Washington State Convention Center, across the street from the United States Federal Court House, one block south of Amazon's World Headquarters, two blocks east of the Westlake Center Light Rail Station and two blocks east of the SLU Street Car. Easy I-5 North & South access is provided via Stewart St. & Olive Way.

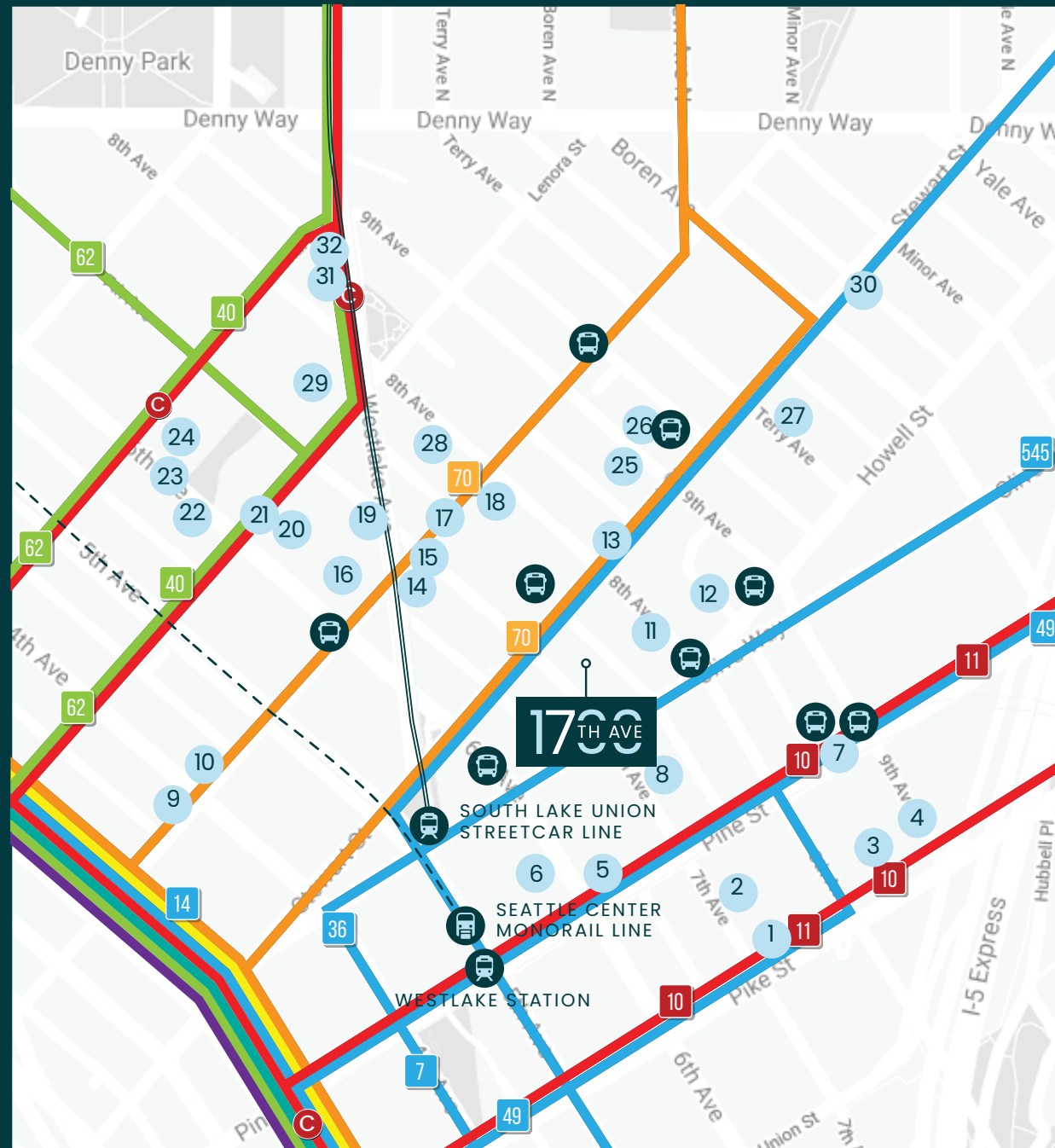




# AMENITIES & TRANSPORTATION MAP

## FOOD & DRINKS

1. The Cheesecake Factory
2. Qiao Lin Hotpot
3. Audacity Wine Bar
4. Daawat Indian Grill & Bar
5. Din Tai Fung
6. Nordstrom Grill
7. Dough Zone™ Dumpling House
8. Anchorhead Coffee
9. Serious Pie Downtown
10. Lola
11. Mr. West Cafe Bar - Downtown
12. Rickhouse Whiskey Bar
13. Daniel's Broiler - Downtown
14. Barolo Ristorante
15. Pho Bac
16. Marination
17. US Courthouse Café
18. Cafe Madeline
19. Cinque Terre Ristorante
20. Skillet Regrade
21. Evergreens Salad
22. Rubinstein Bagels (South Lake Union)
23. The Victor Tavern
24. 2120
25. Subway
26. Grumpy Bean
27. Nana's Green Tea
28. Urban Sushi Kitchen
29. Casco Antiguo SLU
30. Mighty-O Donuts
31. Shake Shack
32. The Butcher's Table



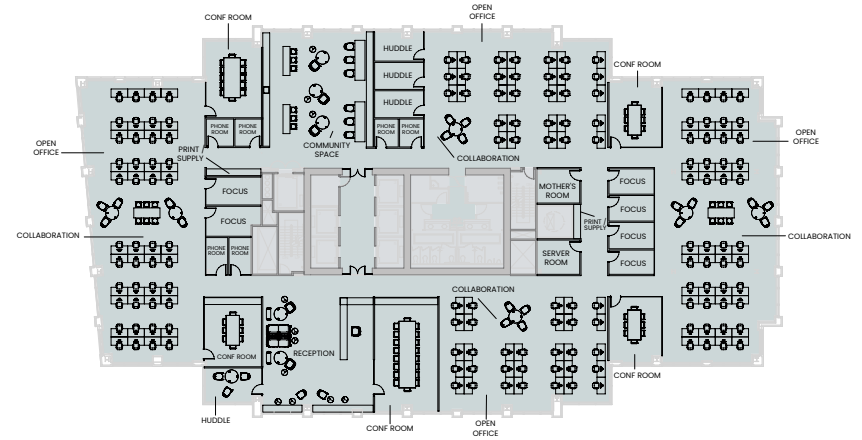


# 1700 SEVENTH SAMPLE TEST-FITS

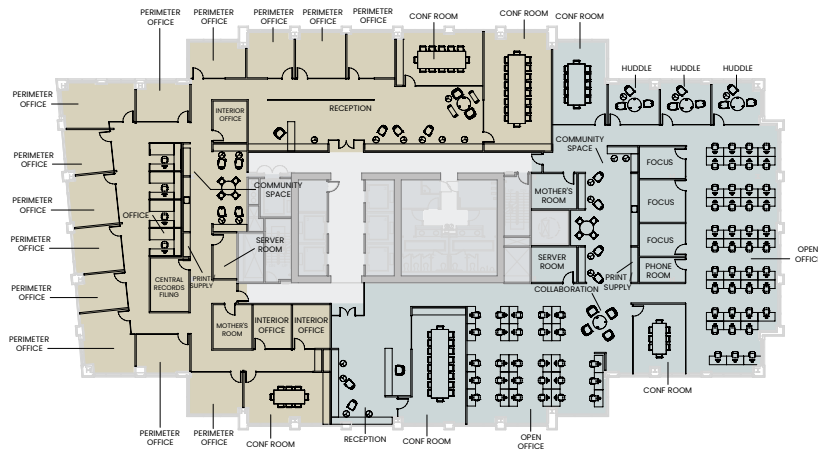
## Professional Services Tenant



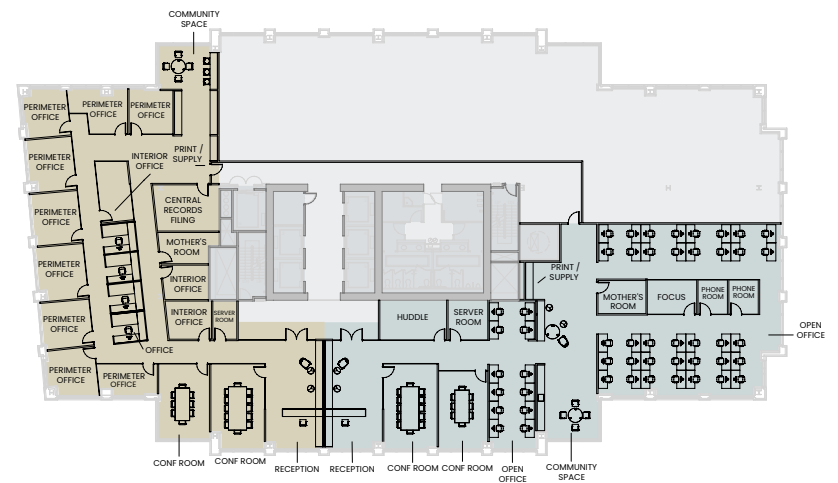
## Tech Tenant



## Tech & Professional Services Tenants



## Tech & Professional Services Tenants



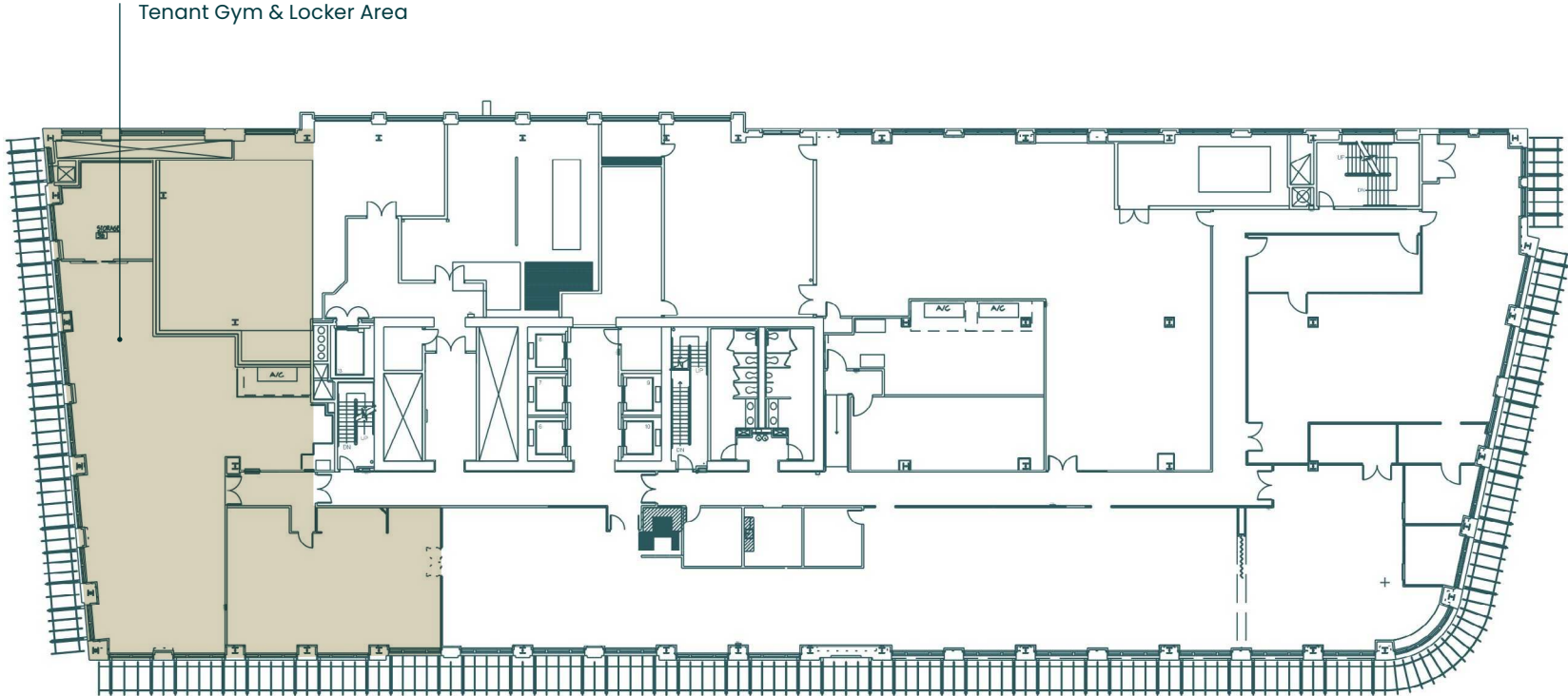
Professional Services Tenants    Tech Tenants



# FLOOR 3

26,727 RSF

Available Now





# FLOOR 4

31,575 RSF

Available Now





# FLOOR 5

32,987 RSF

Available Now

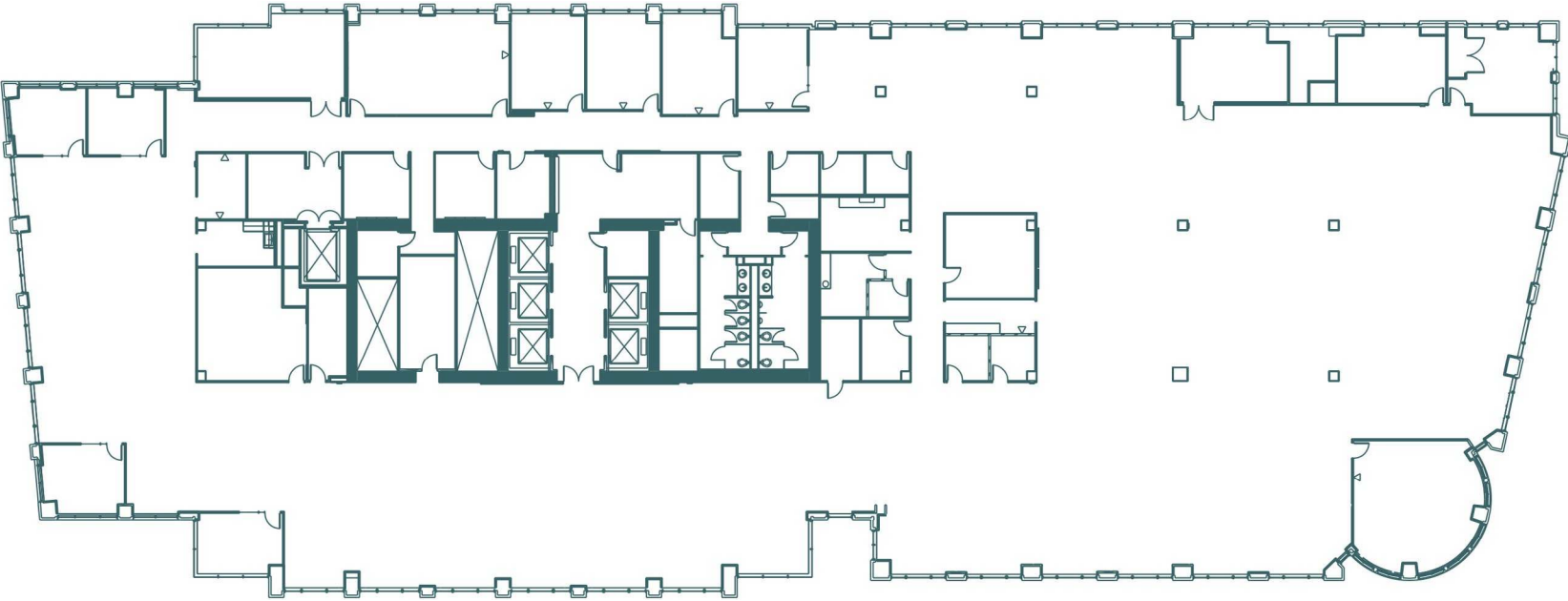




# FLOOR 6

31,933 RSF

Available Now





# FLOOR 7

32,324 RSF

Available Now

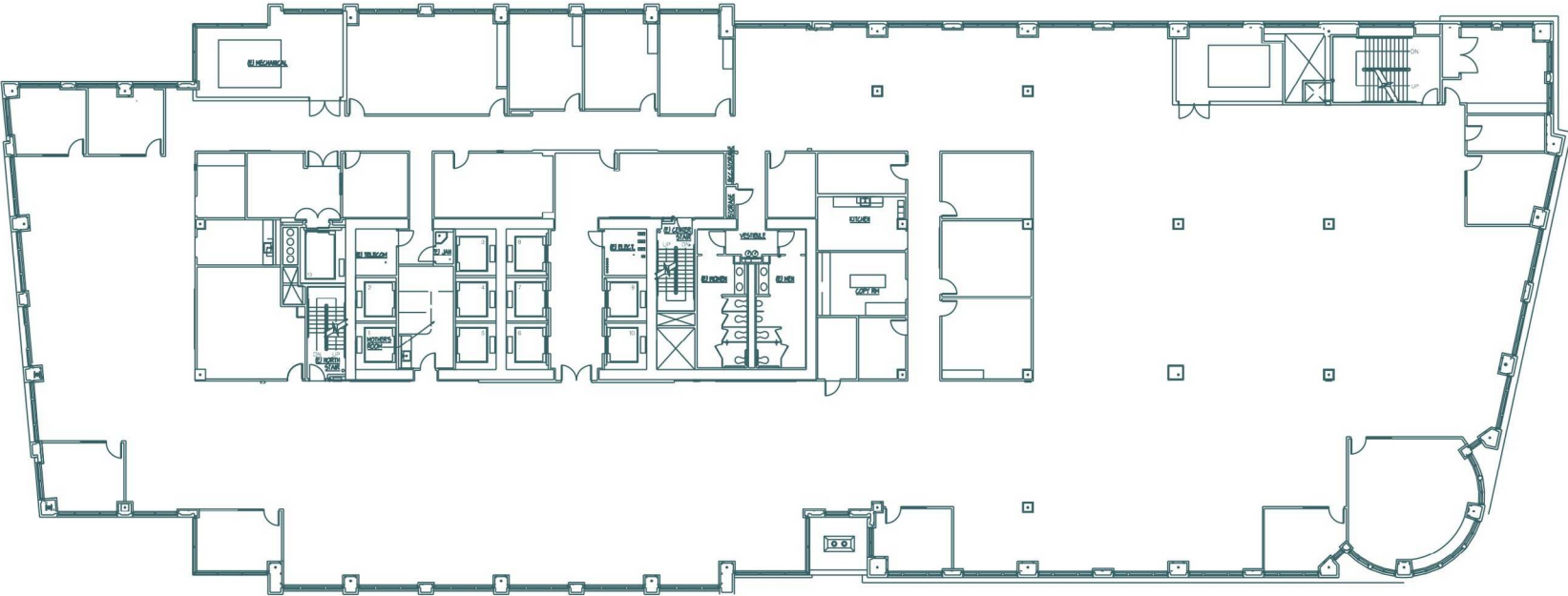




# FLOOR 8

31,824 RSF

Available Now



# FLOOR 9

32,845 RSF

Available Now



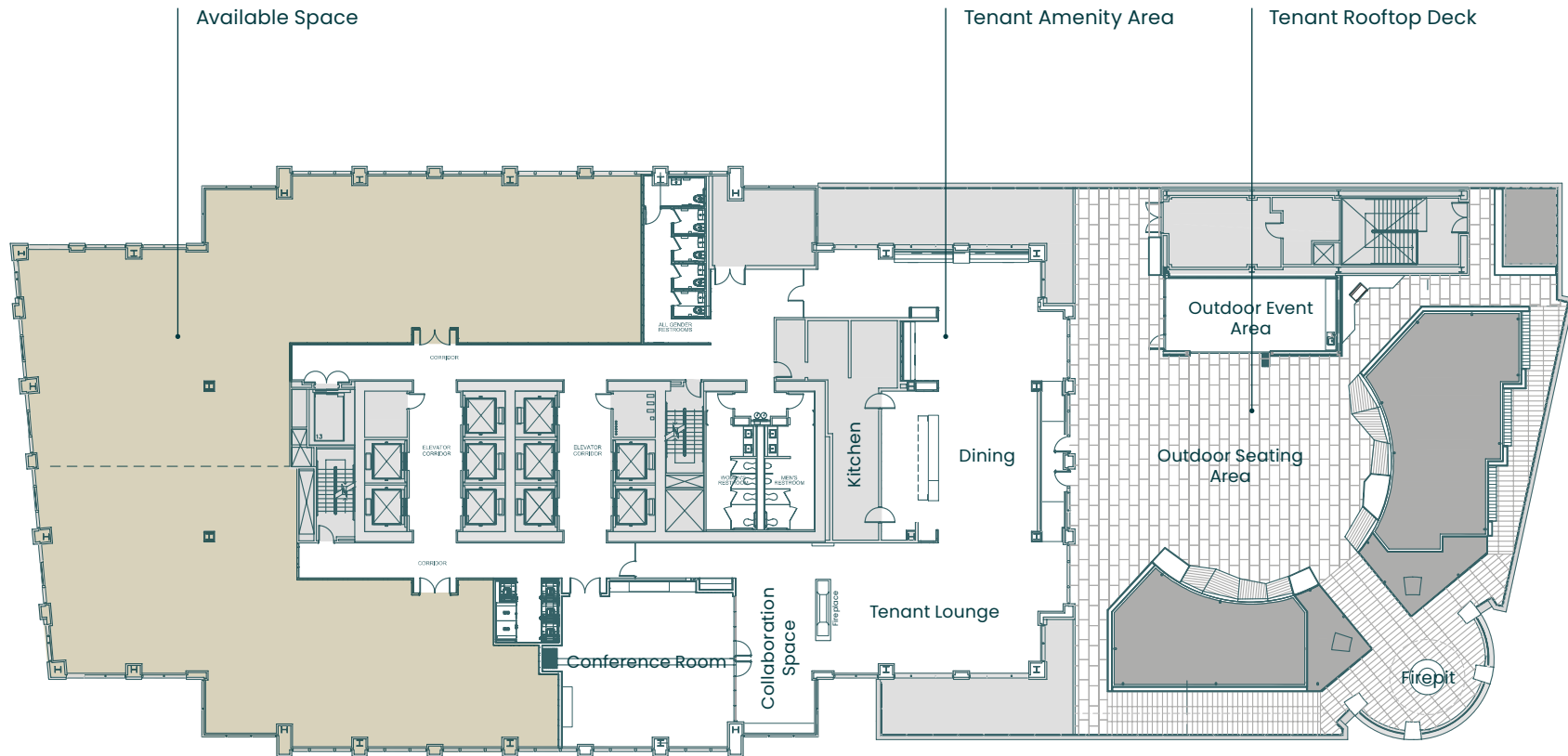


# FLOOR 10



11,082 RSF

Available Now



1700 7TH AVENUE — SEATTLE, WA



# FLOOR 11 | SPEC SUITES

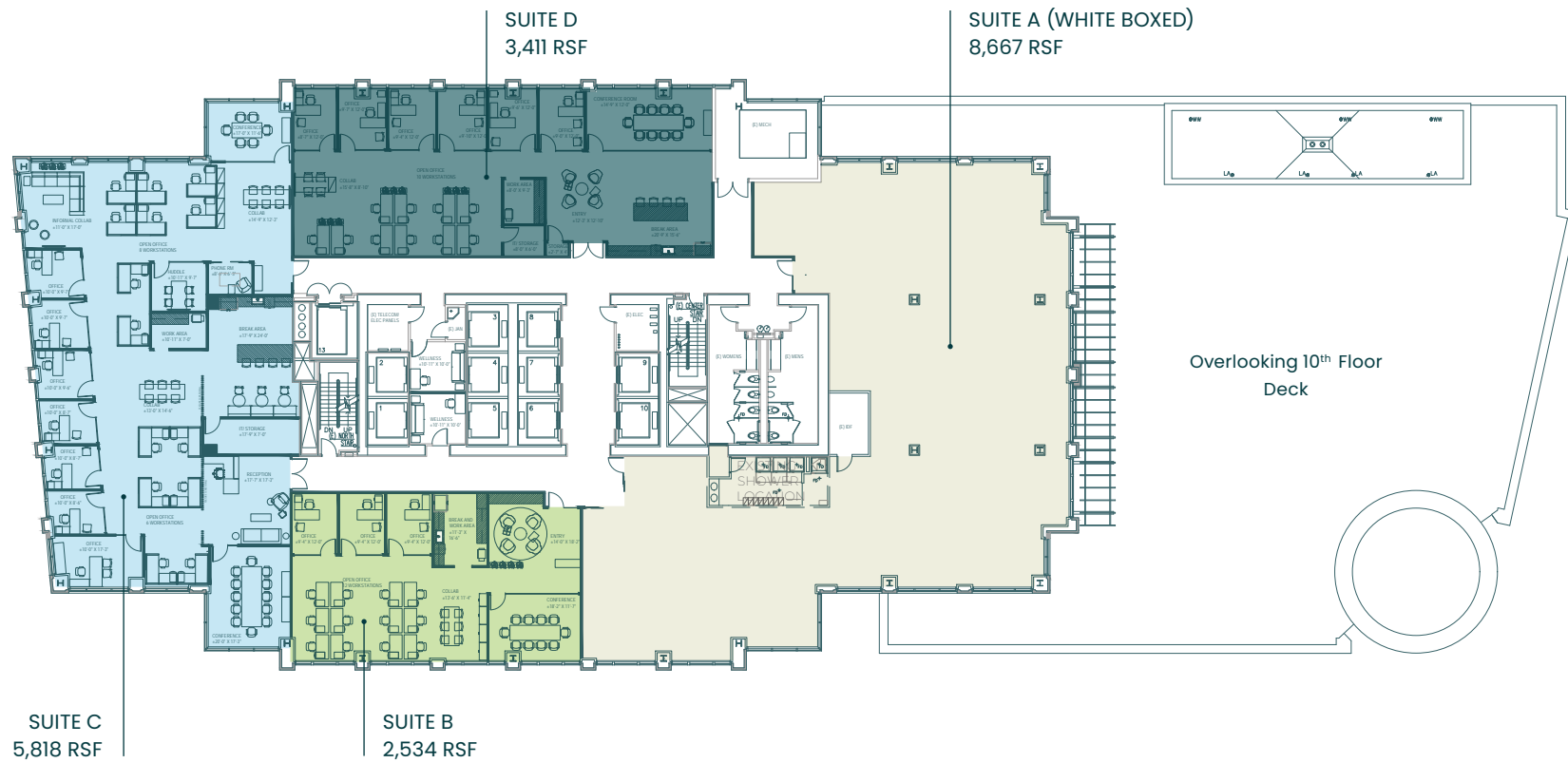
SUITE A (WHITE BOXED): 8,667 RSF

SUITE B: 2,534 RSF

SUITE C: 5,818 RSF

SUITE D: 3,411 RSF

Available Now





# FLOOR 12

20,904 RSF

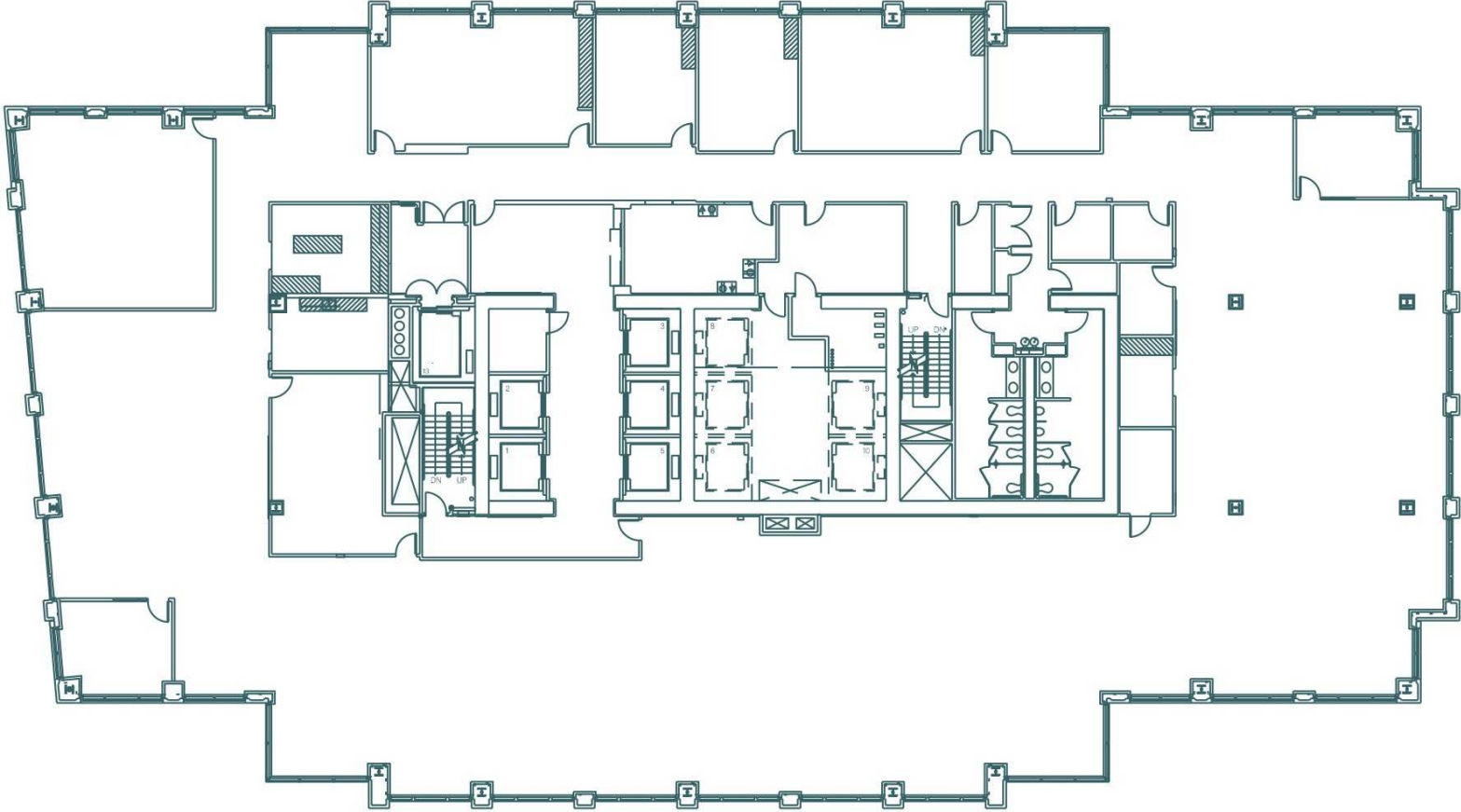
Available Now



# FLOOR 13

20,941 RSF

Available Now

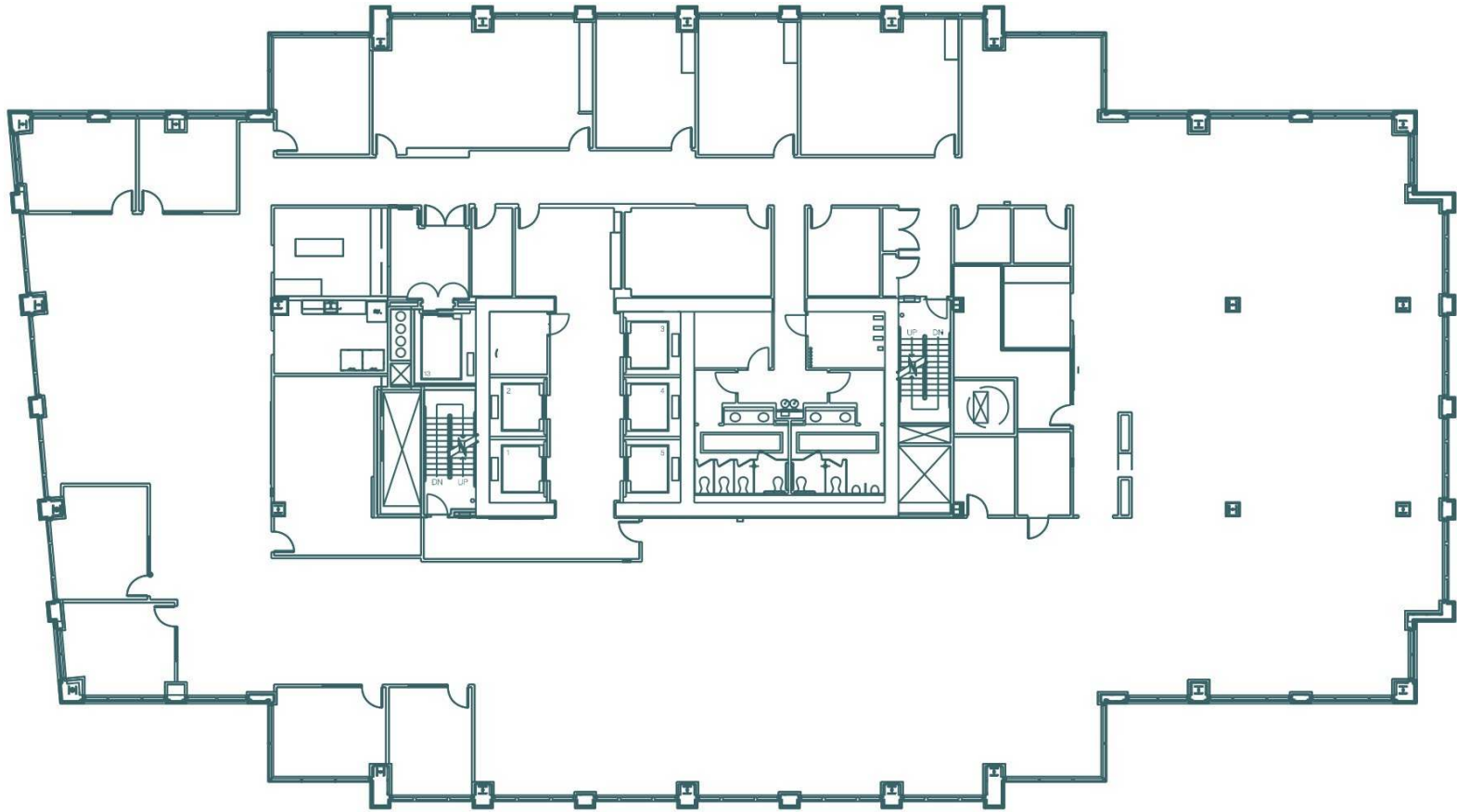




# FLOOR 14

20,941 RSF

Available Now



# FLOOR 15

9,977 RSF

Available Now

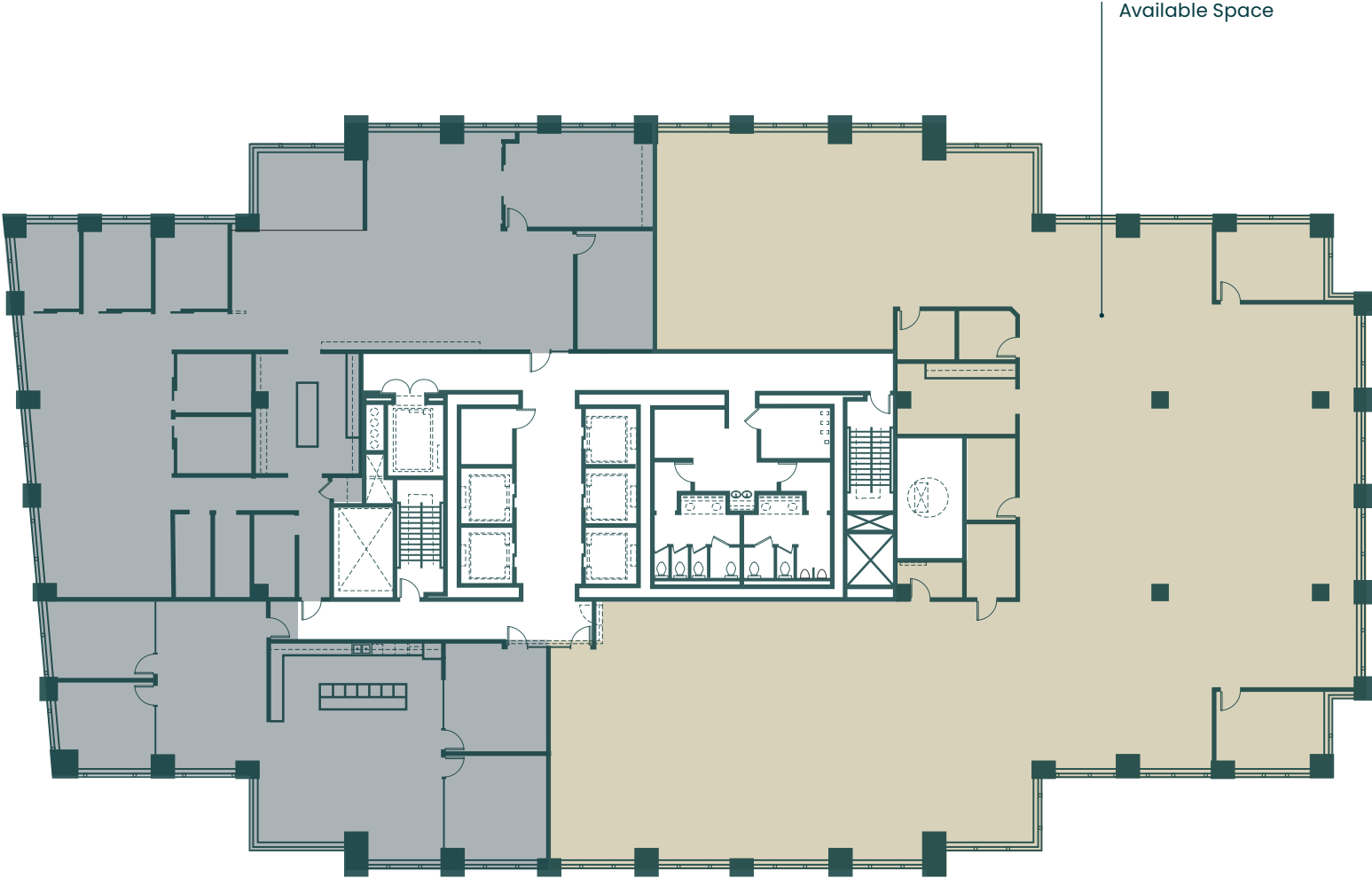




# FLOOR 16 | SPEC SUITE

12,873 RSF

Available Now



1700 7TH AVENUE — SEATTLE, WA



# 17<sup>TH</sup> AVE

---

**CAVAN O'KEEFE**

*Senior Managing Director*  
t 206-395-2903  
cavan.okeefe@nmrk.com

**JESSE OTTELE**

*Executive Managing Director*  
t 206-452-4529  
jesse.ottele@nmrk.com

**TIM O'KEEFE**

*Executive Managing Director*  
t 425-362-1401  
tim.okeefe@nmrk.com

---

**CLISE**  
PROPERTIES



**NEWMARK**

The distributor of this communication is performing acts for which a real estate license is required. The information contained herein has been obtained from sources deemed reliable but has not been verified and no guarantee, warranty or representation, either express or implied, is made with respect to such information. Terms of sale or lease and availability are subject to change or withdrawal without notice.