

21312 30TH DRIVE SE | BOTHELL, WA 98021

# HIGHLANDS



**Joe Lynch**

Executive Managing Director

425.362.1399

[joe.lynch@nmrk.com](mailto:joe.lynch@nmrk.com)

**Dan Harden**

Senior Managing Director

425.362.1393

[dan.harden@nmrk.com](mailto:dan.harden@nmrk.com)

**NEWMARK**

 **STEELWAVE**

**Rialto**   
CAPITAL MANAGEMENT

# AVAILABILITIES

BUILDING	SUITE	OFFICE	WAREHOUSE	TOTAL
A	105	3,287 SF	0	3,287 SF
B	102 & 202	13,656 SF	4,534 SF	18,189 SF
B	103	8,030 SF	2,797 SF	10,826 SF
B	201 & 105	9,594 SF	2,603 SF	12,197 SF
B	102, 103 & 105	12,927 SF	9,758 SF	22,685 SF
B	201 & 202	17,780 SF	0	17,780 SF
B	All Suites	30,707 SF	9,758 SF	40,465 SF
C	120	12,294 SF	0 (Able to convert up to ±6,000)	12,294 SF



# PROPERTY HIGHLIGHTS

195,684 SF TOTAL FOR BUILDINGS A, B AND C



Full property renovation completed to enhance the Class A image and functionality



Heavy power, 24' clear warehouse with shared dock high and grade level loading



On site amenities including – full service deli, ample parking and secure location





# THE NEIGHBORHOOD

## CORPORATE NEIGHBORS

- Seattle Genetics
- Sound Transit
- Cepheid
- T-Mobile
- Microsoft
- ACG Biologics
- Lyell

## COMMUTE TIMES

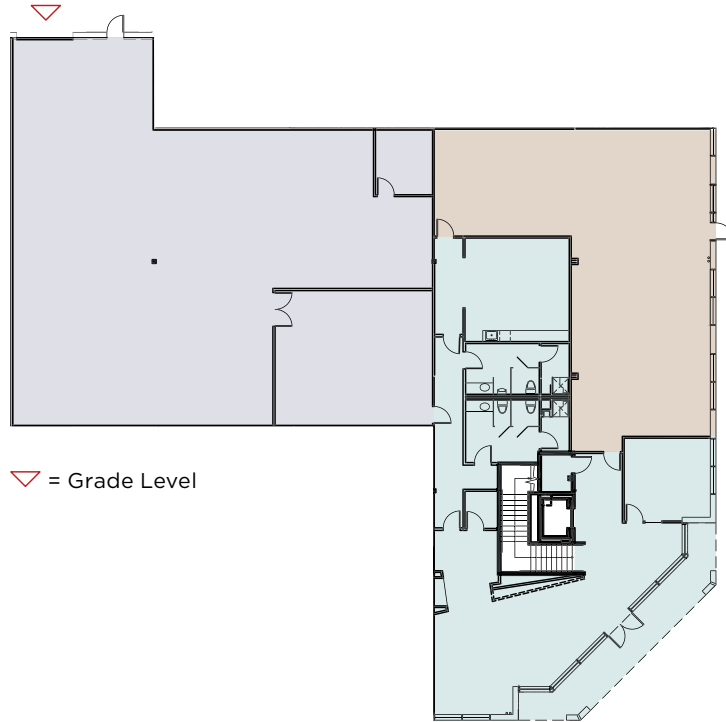
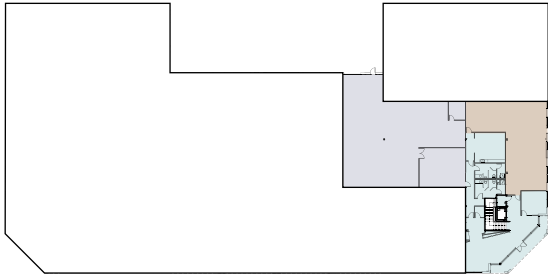
DESTINATION	COMMUTE
Downtown Kirkland	10 minutes
Redmond	30 minutes
Downtown Bellevue	23 minutes
Downtown Seattle	34 minutes



# BUILDING B SUITES 102 AND 202 FLOOR PLANS



## First Floor | Suite 102



▽ = Grade Level

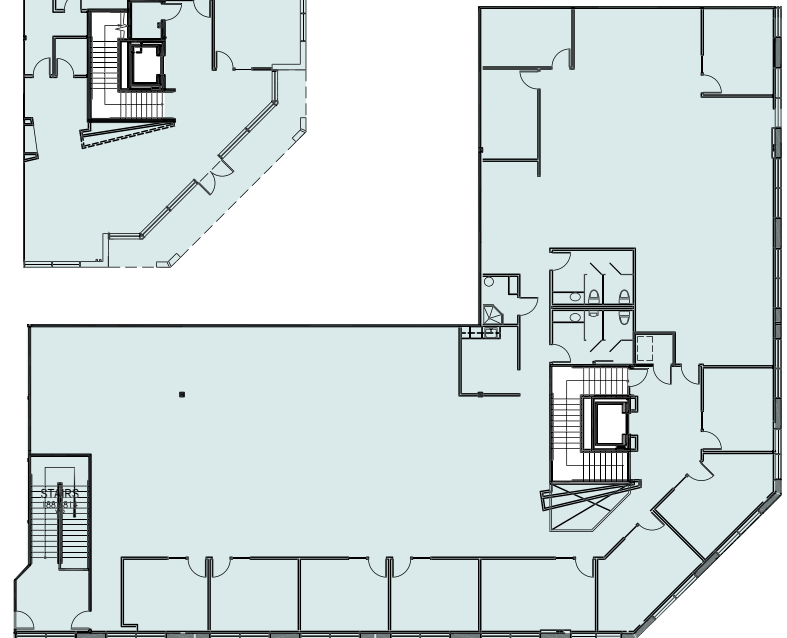
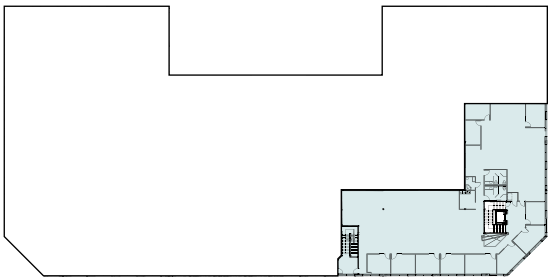
Total SF **18,189 SF**

Office SF **13,656 SF**

Warehouse SF **4,534 SF**

Available **September 2024**

## Second Floor | Suite 202

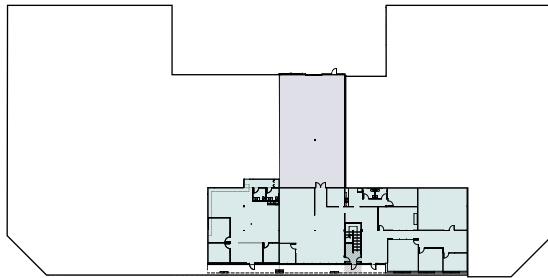


■ Office   ■ Warehouse   ■ Lab

# BUILDING B SUITE 103

HIGHLANDS

## First Floor

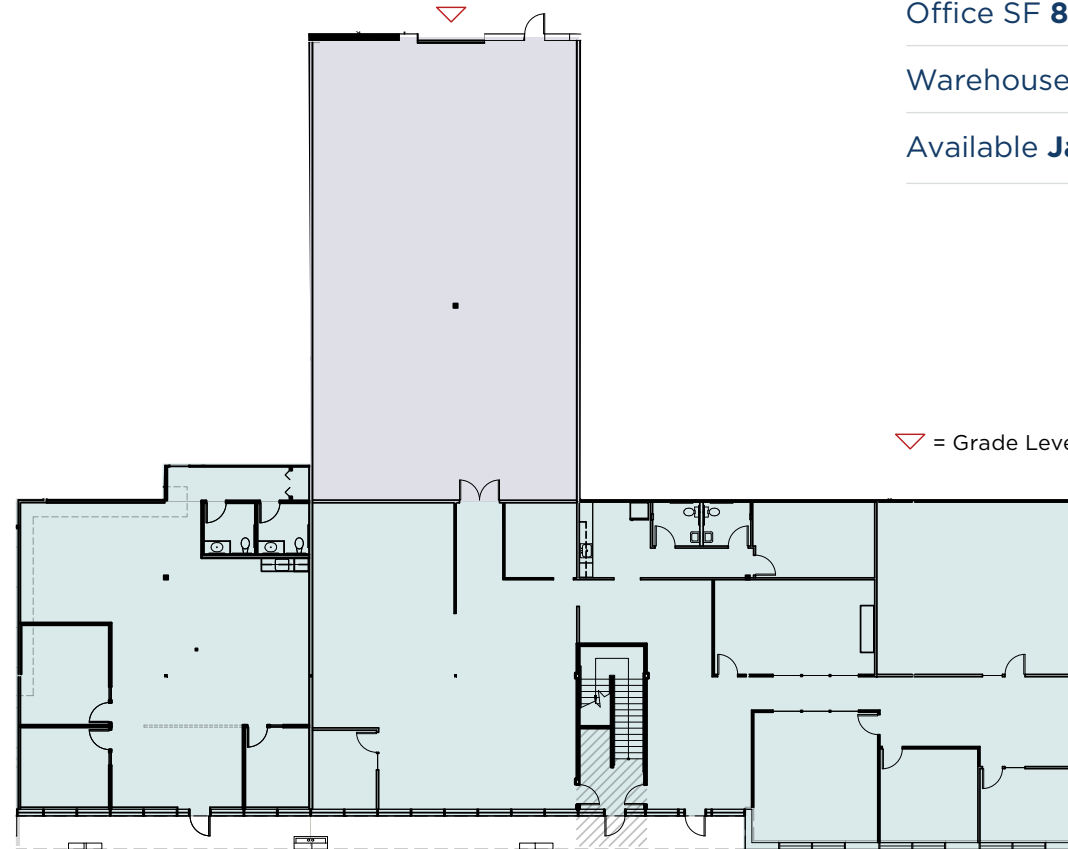


Total SF **10,826 SF**

Office SF **8,030 SF**

Warehouse SF **2,797 SF**

Available **January 2025**



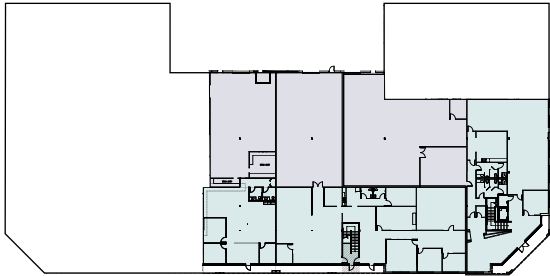
▽ = Grade Level

■ Office   ■ Warehouse

# BUILDING B SUITES 102, 103, AND 105

HIGHLANDS

## First Floor

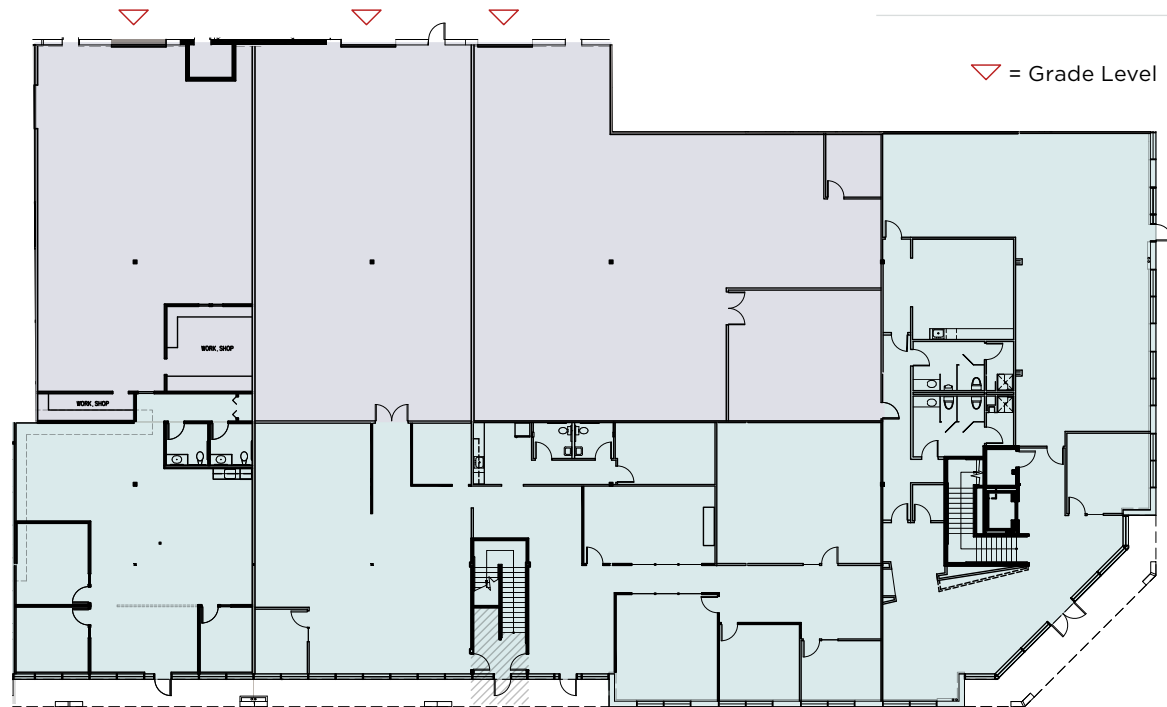


Total SF **22,685 SF**

Office SF **12,927 SF**

Warehouse SF **9,758 SF**

Available **January 2025**



▽ = Grade Level

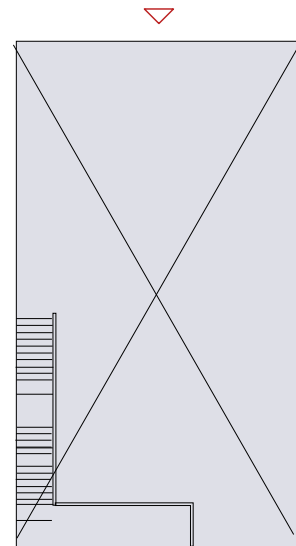
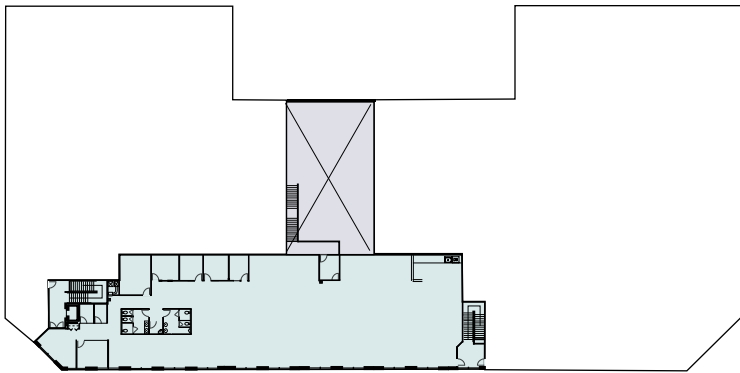
■ Office   ■ Warehouse



# BUILDING B SUITES 201 AND 105 FLOOR PLANS

HIGHLANDS

## First and Second Floors



Total SF **12,197 SF**

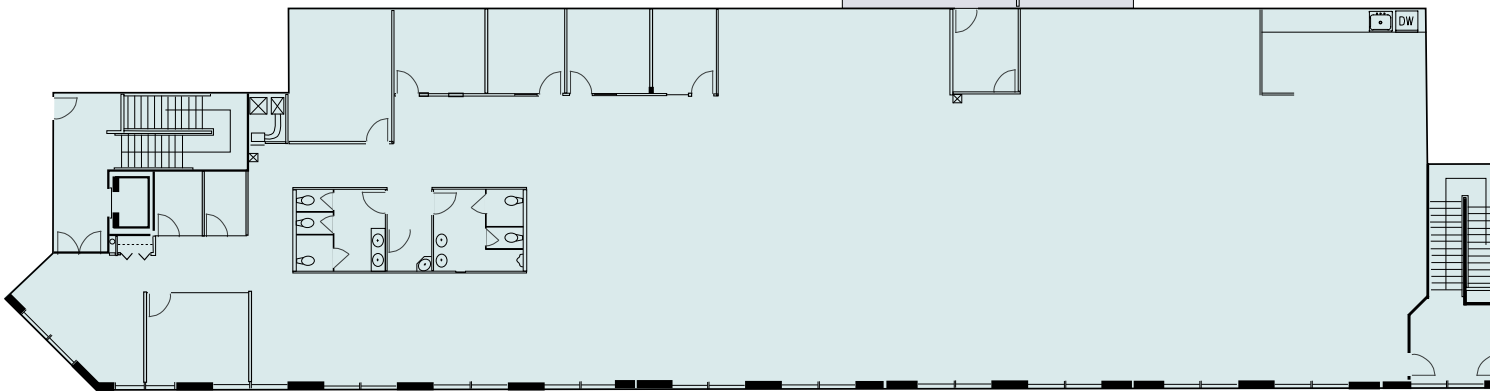
Office SF **9,594 SF**

Warehouse SF **2,603 SF**

Available **Immediately**

As-Built

▽ = Grade Level

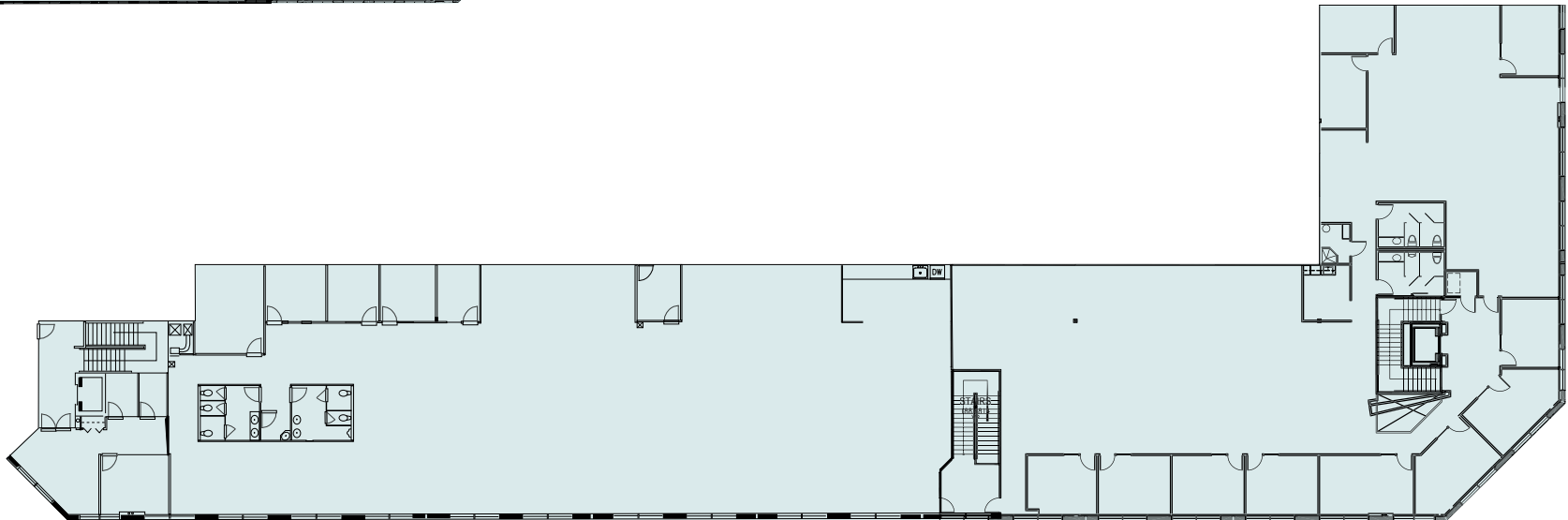
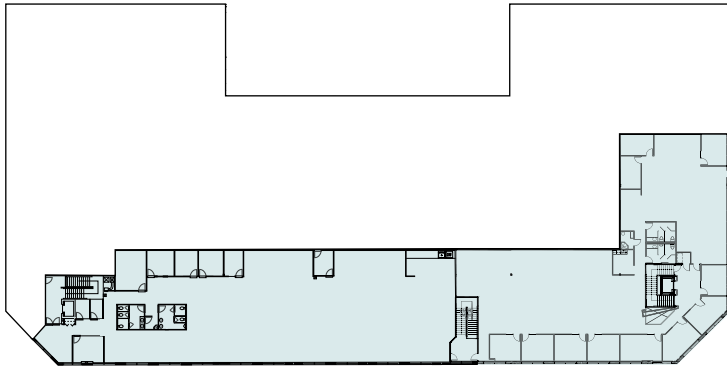


Office Warehouse

# BUILDING B SUITES 201 AND 202 FLOOR PLANS

HIGHLANDS

## Second Floor



---

Total SF **17,780 RSF**

---

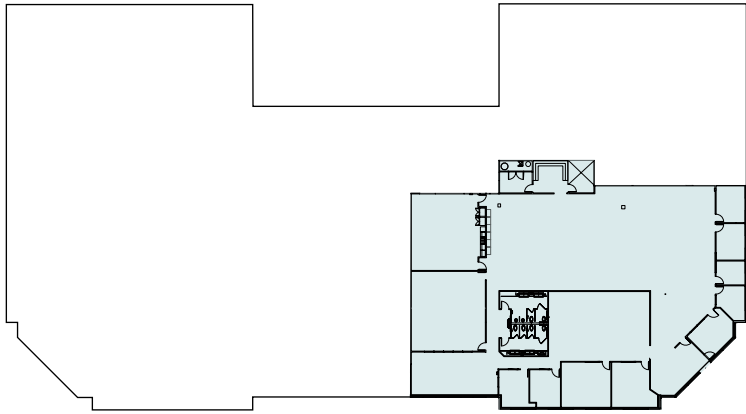
Available **September 2024**

---

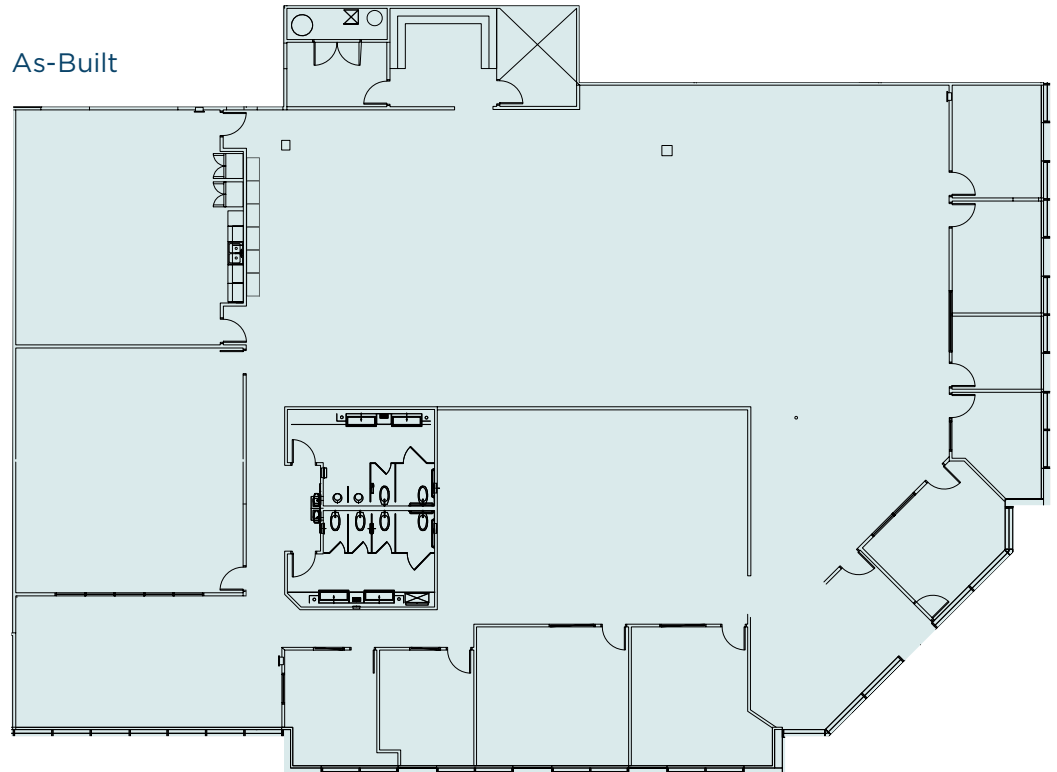
# BUILDING C SUITE 120 FLOOR PLAN

HIGHLANDS

## First Floor



As-Built



Total SF **12,294 RSF**

Available **Immediately**

\*Available to reconfigure to 50% warehouse with grade level loading

# HIGHLANDS

21312 30TH DRIVE SE | BOTHELL, WA 98021

**Joe Lynch**

Executive Managing Director

425.362.1399

[joe.lynch@nmrk.com](mailto:joe.lynch@nmrk.com)

**Dan Harden**

Senior Managing Director

425.362.1393

[dan.harden@nmrk.com](mailto:dan.harden@nmrk.com)

**NEWMARK**

