

EVERGREEN PLAZA

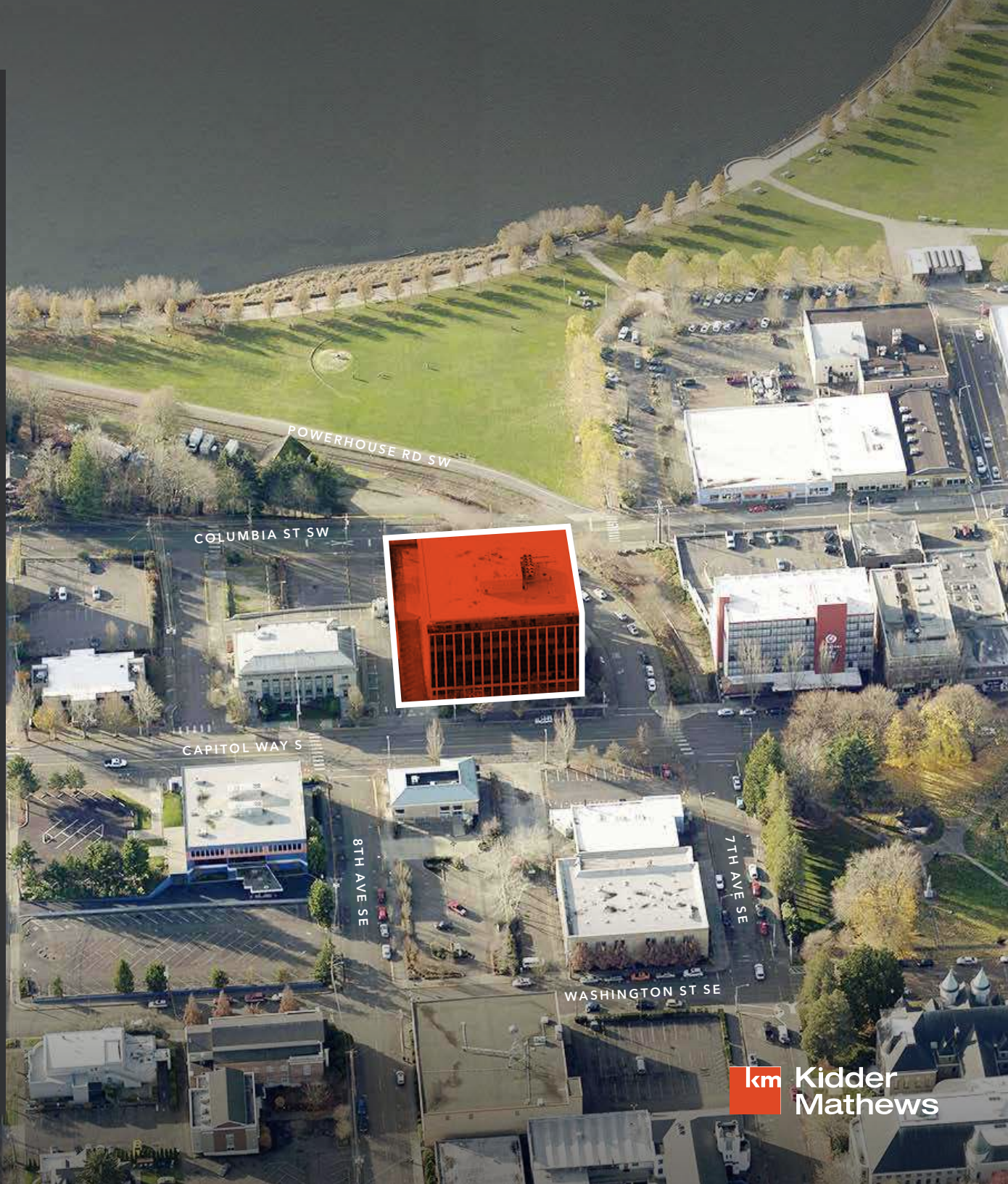
*Office Spaces Available
for Lease in Olympia*

711 CAPITOL WAY S
OLYMPIA, WA 98501

EVAN PARKER
360.705.0174
evan.parker@kidder.com

AMY HARDING
360.705.1377
amy.harding@kidder.com

KIDDER.COM



EVERGREEN PLAZA



Mid-century building with character, 180° views, & close proximity to capitol

Join Deloitte, Board of Accountancy, Columbia Legal Services and more

Available 576 RSF - 14,467 RSF

Tenant Improvements negotiable, based on tenant's credit worthiness

\$21.00-24.00 PSF, fully serviced

AVAILABLE SUITES

207	670 SF
307	3,730 SF
503	1,822 SF
504	1,884 SF
505	1,637 SF
606/607	2,321 SF
702	1,787 SF
705	2,119 SF

EVERGREEN PLAZA

NEIGHBORHOOD WALKING SCORE

Evergreen Plaza has a Walk Score of 82 out of 100. This downtown neighborhood, with 2,243 residents, is very walkable, allowing most errands to be accomplished on foot

Nearby neighborhoods South Capitol, Eastside, Carlyon North, South Westside, Northwest Olympia, North East and Upper Eastside

Nearby parks include Capitol Lake Park, Heritage Park and Bigelow Springs Park

DOWNTOWN NEIGHBORHOOD RANKING

Rank	Name	Walk Score	Transit Score	Bike Score	Population
1	Downtown	77	53	82	2,243
2	South Capitol	61	42	64	957
3	Eastside	63	42	79	2,405

59

TRANSIT SCORE

82

WALKING SCORE





NEARBY AMENITIES

FOOD

- 01 1889 Prime Steakhouse
- 02 Olympia Oyster House
- 03 Cascadia Grill
- 04 Octopas Cafe
- 05 Uptown Grill
- 06 Asahi Sushi
- 07 Meoni's Italian Sub
- 08 Akashic Food Trailer
- 09 Old School Pizzeria
- 10 Well 80 Brewhouse
- 11 South Bay
Dickerson's BBQ
- 12 McDonald's
- 13 Jack in the Box
- 14 Casa Mia of Olympia

SHOPPING

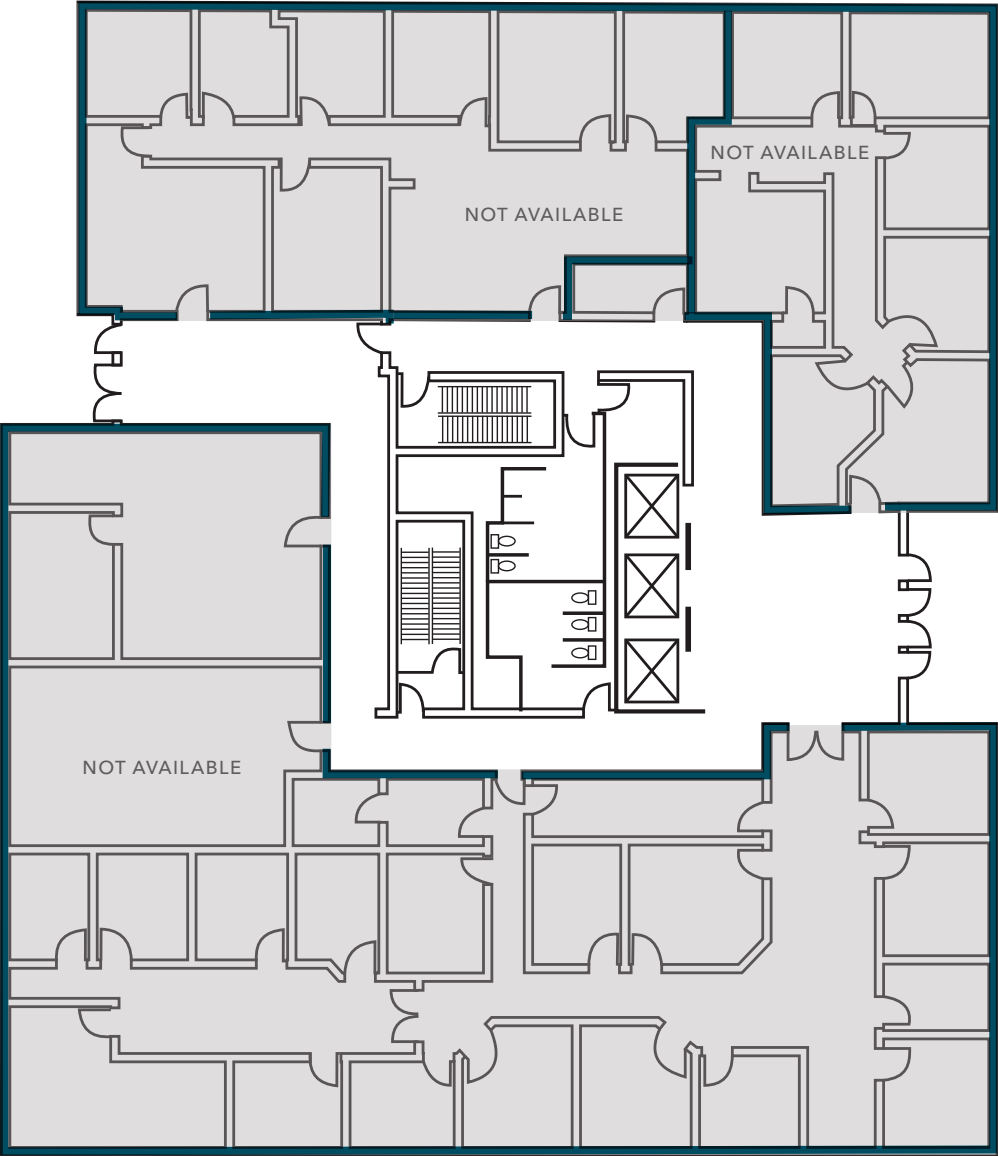
- 01 Olympia Farmers Market
- 02 The Wine Loft
- 03 Olympia Supply & Ace
Hardware
- 04 Orca Books Cooperative
- 05 The Pet Works
- 06 Fifth Ave Flea Market

LIFESTYLE & FITNESS

- 01 Heritage Park
- 02 The Olympia Yacht Club
- 03 Exit Puzzles Escape Room
- 04 Capitol Theater
- 05 Washington Center for the
Performing Arts
- 06 Art House Designs
- 07 Alliance Athletics Olympia
- 08 Plum Street YMCA
- 09 Olympia Family Theater
- 10 Mi Tierra Pottery & Arts
- 11 WET Science Center
- 12 Hands On Children's Museum
- 13 OlyYoga
- 14 Yashiro Japanese Garden

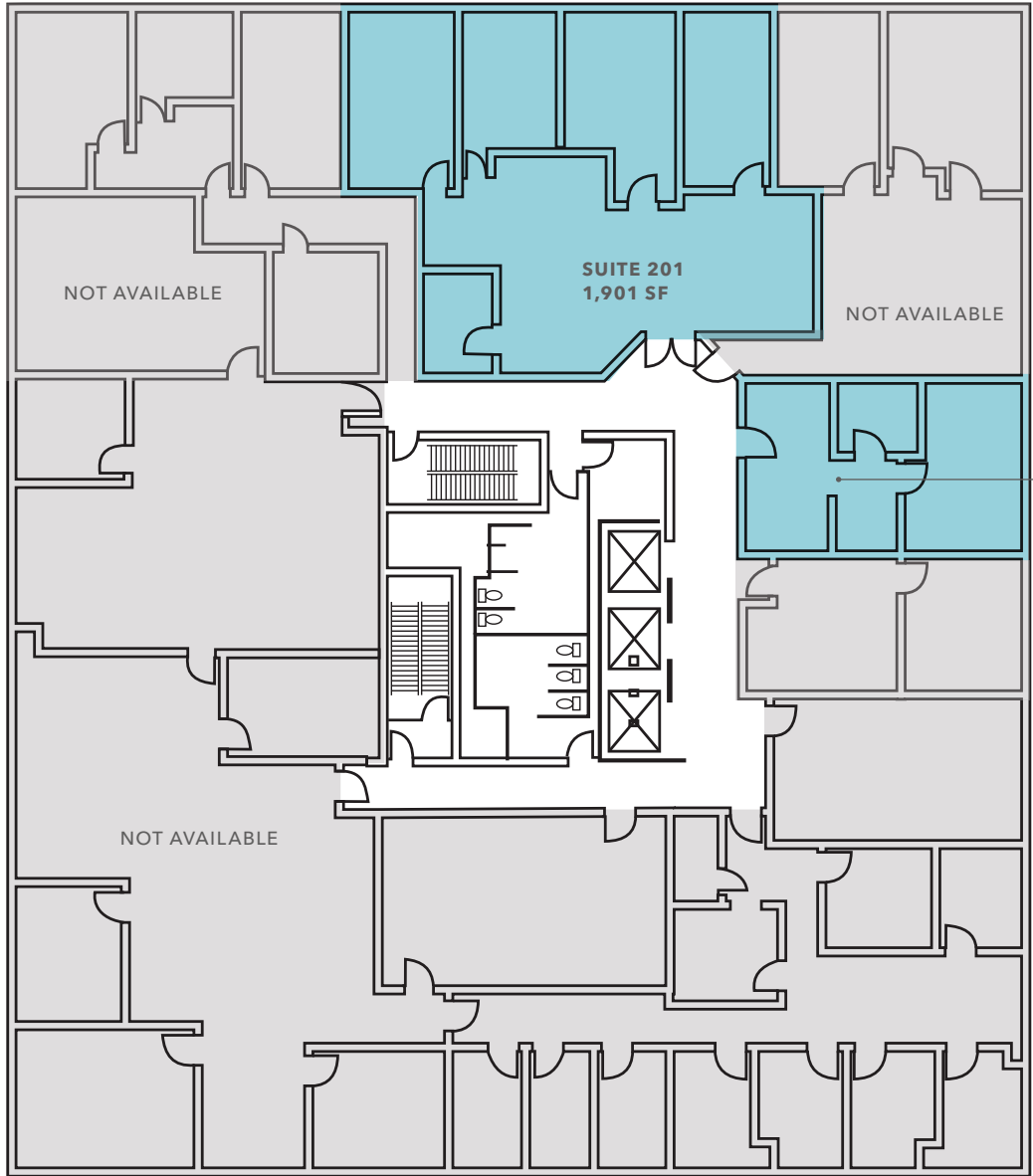
BANKS

- 01 Bank of America
- 02 U.S. Bank
- 03 Washington Business Bank
- 04 Commencement Bank
- 05 Chase Bank
- 06 WSECU



1ST
FLOOR

FULLY
LEASED OUT



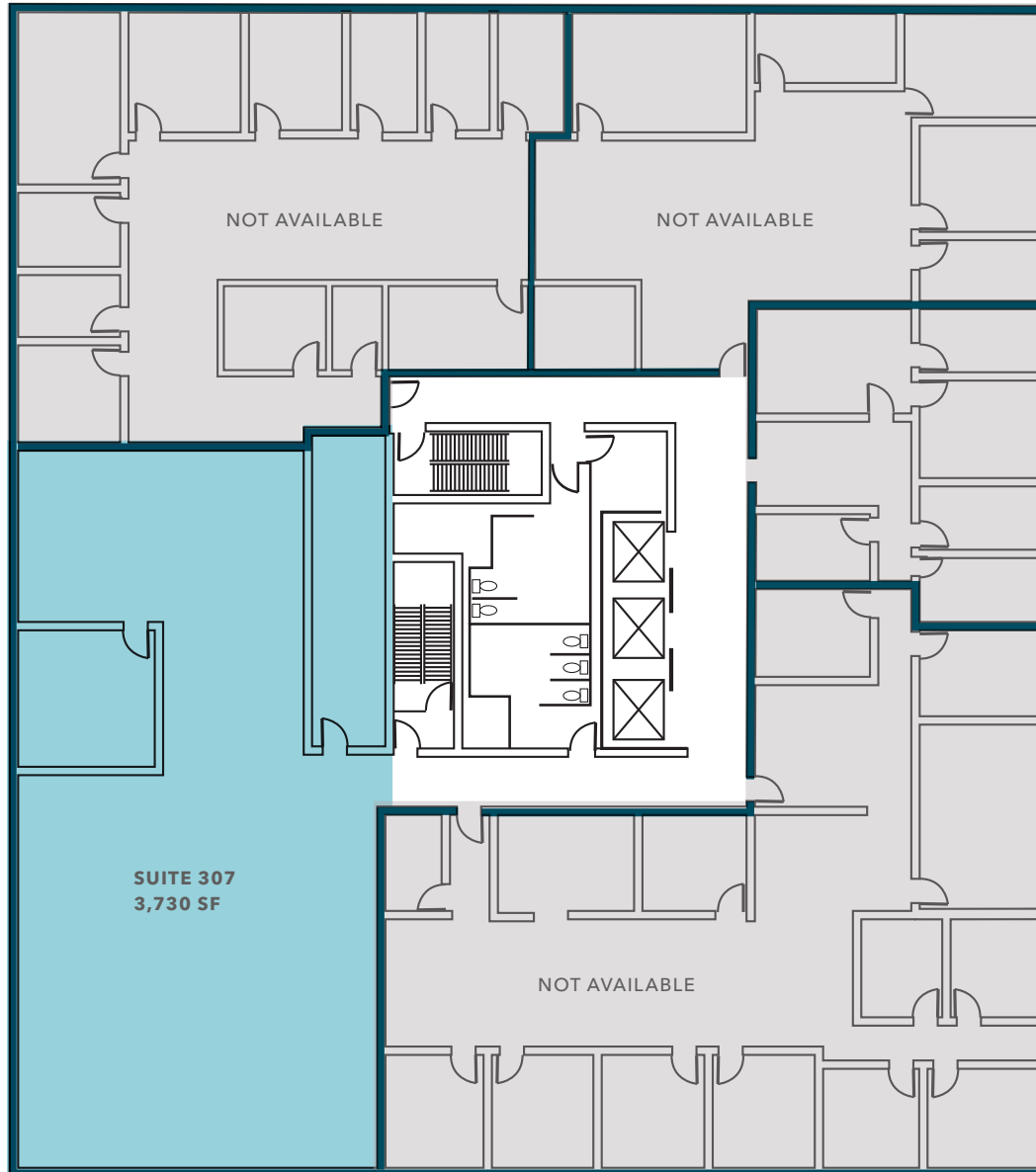
2ND
FLOOR

SUITE 201
FULLY SERVICED

\$24.00 PSF
201, FULLY SERVICED

SUITE 207
FULLY SERVICED

\$22.00 PSF
207, FULLY SERVICED



3RD

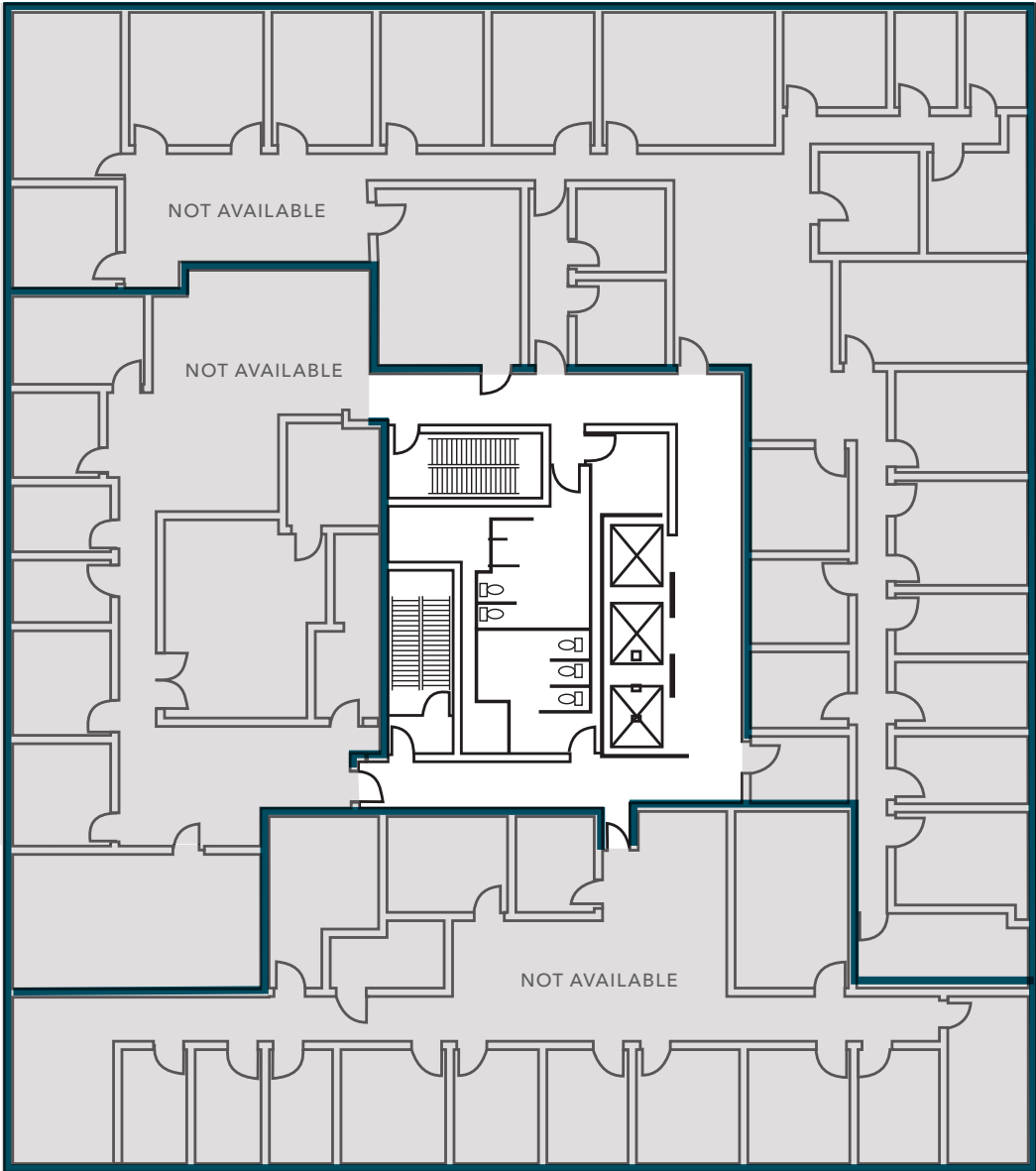
FLOOR

SUITE 307

AVAILABLE

\$22.00 PSF

307, FULLY SERVICED

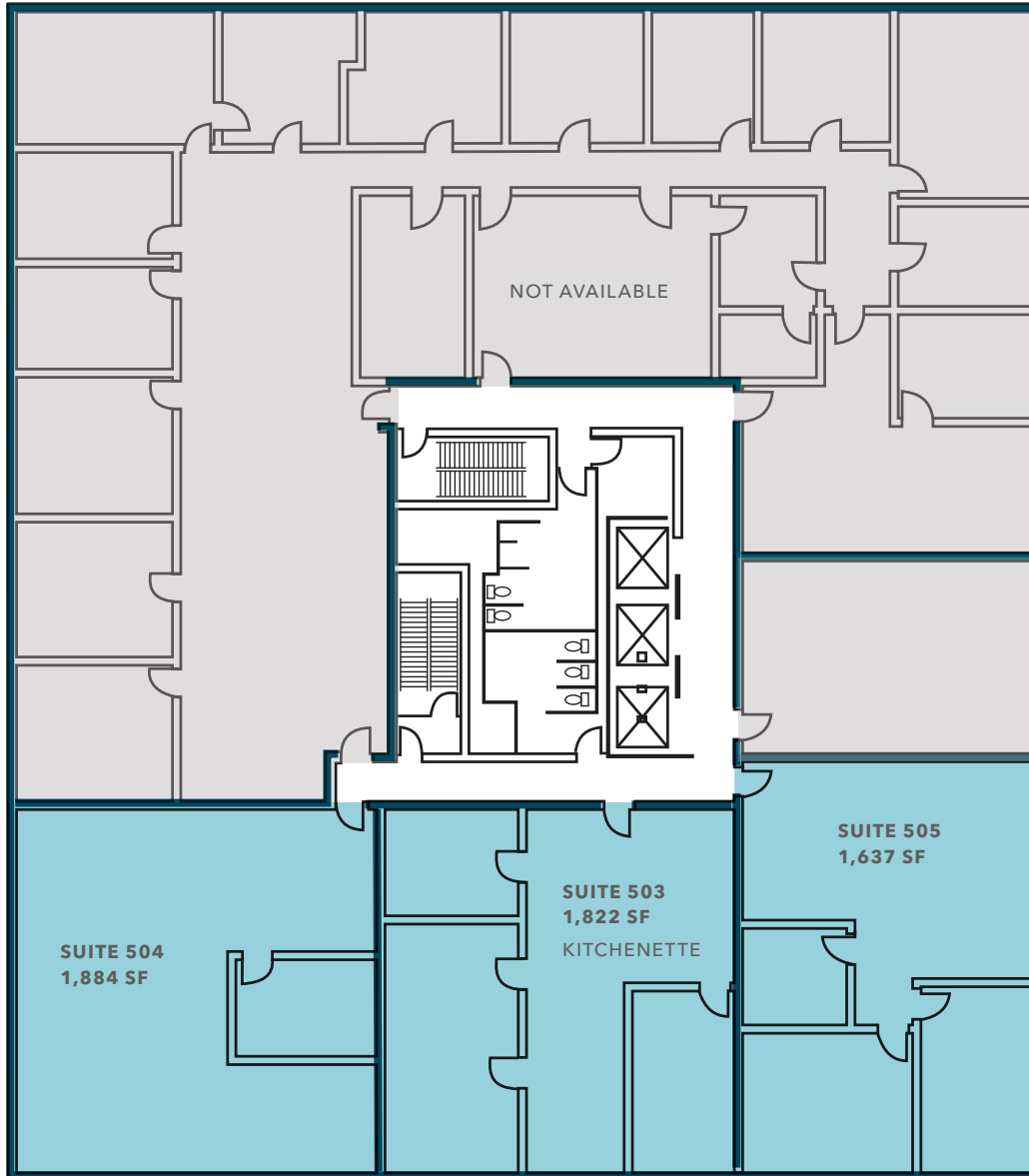


4TH

FLOOR

FULLY

LEASED OUT



5TH

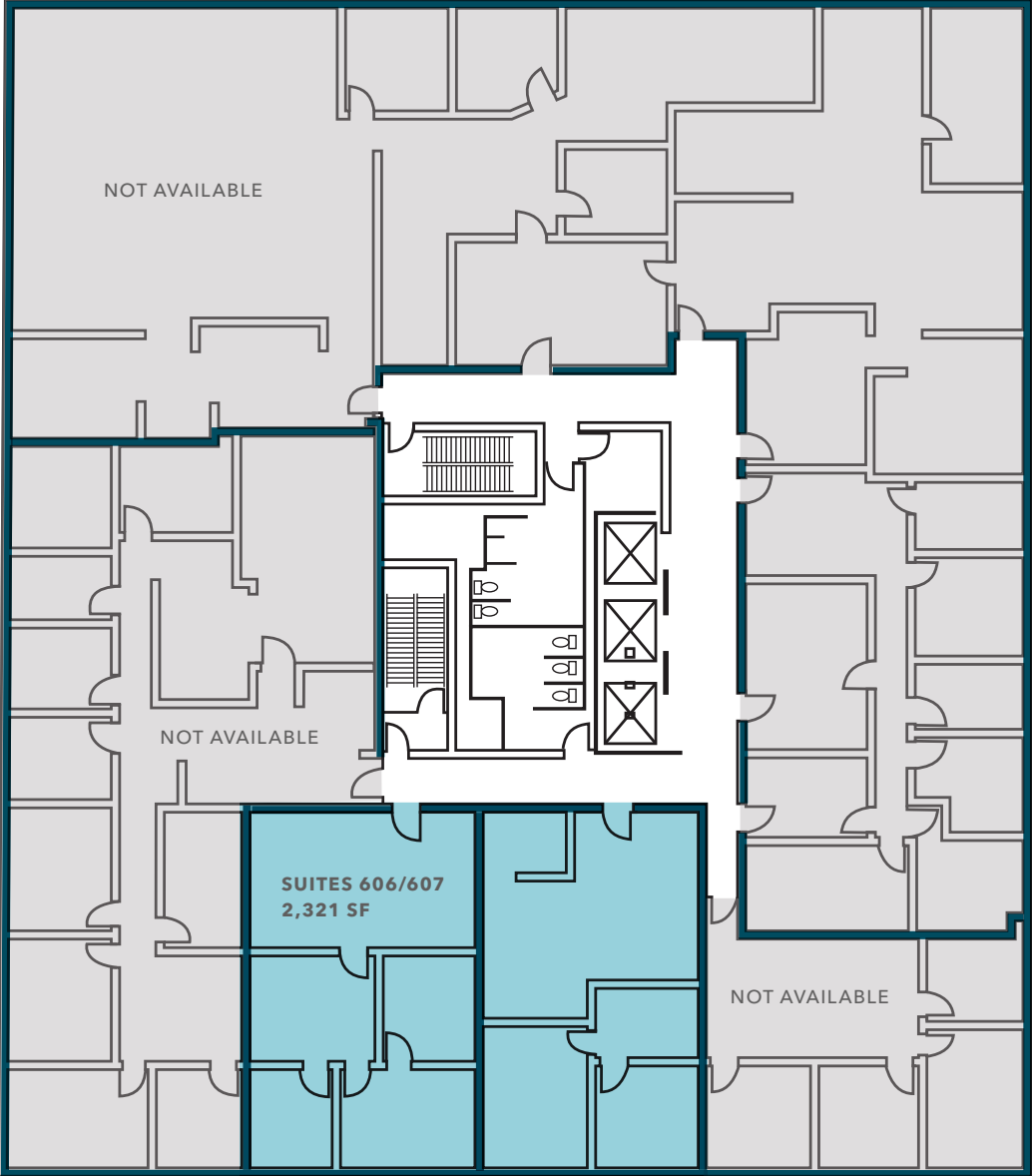
FLOOR

\$23.00 PSF

503, FULLY SERVICED

\$24.00 PSF

504 & 505, FULLY SERVICED

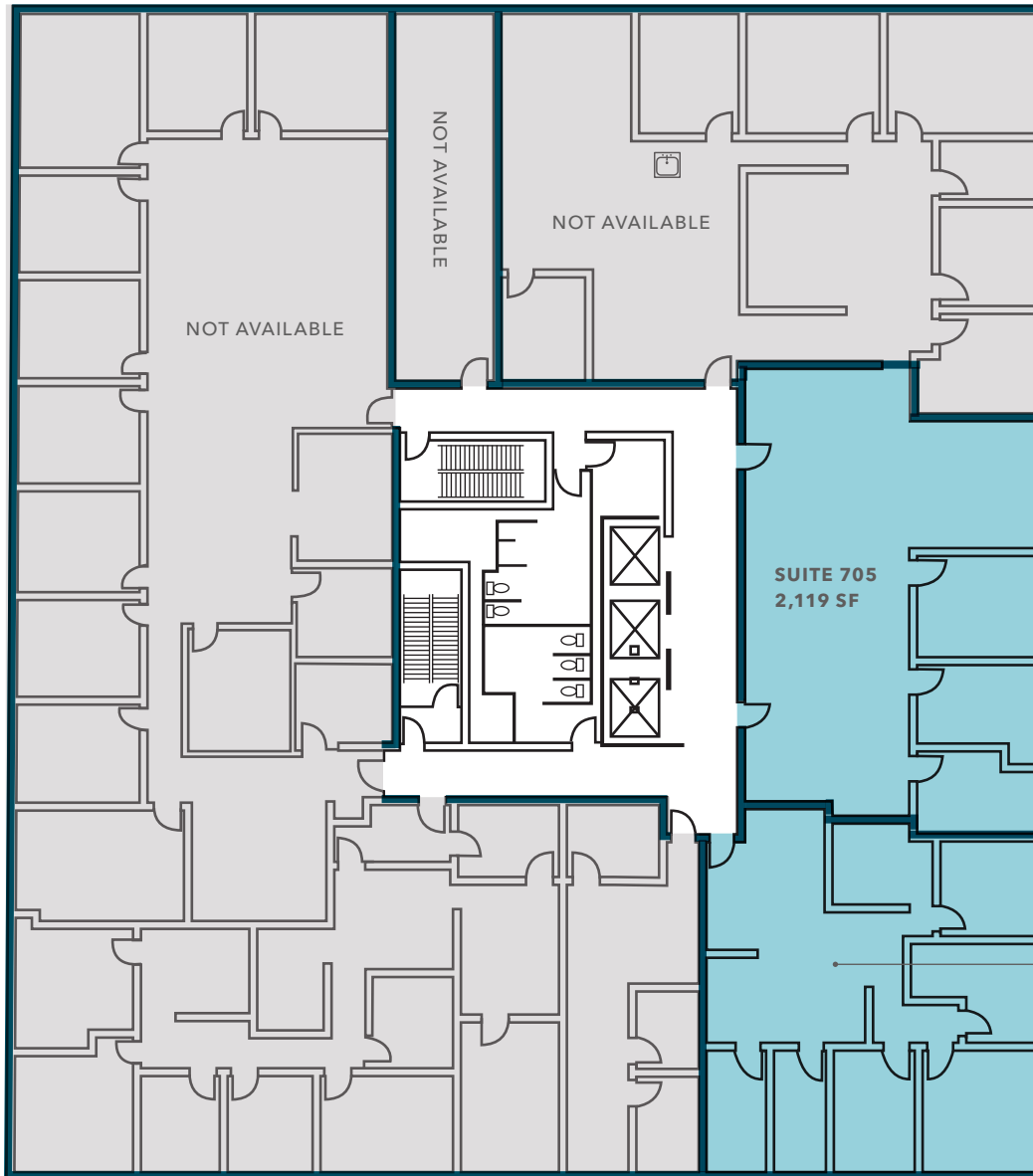


6TH

FLOOR

\$22.00 PSF

606 & 607, FULLY SERVICED



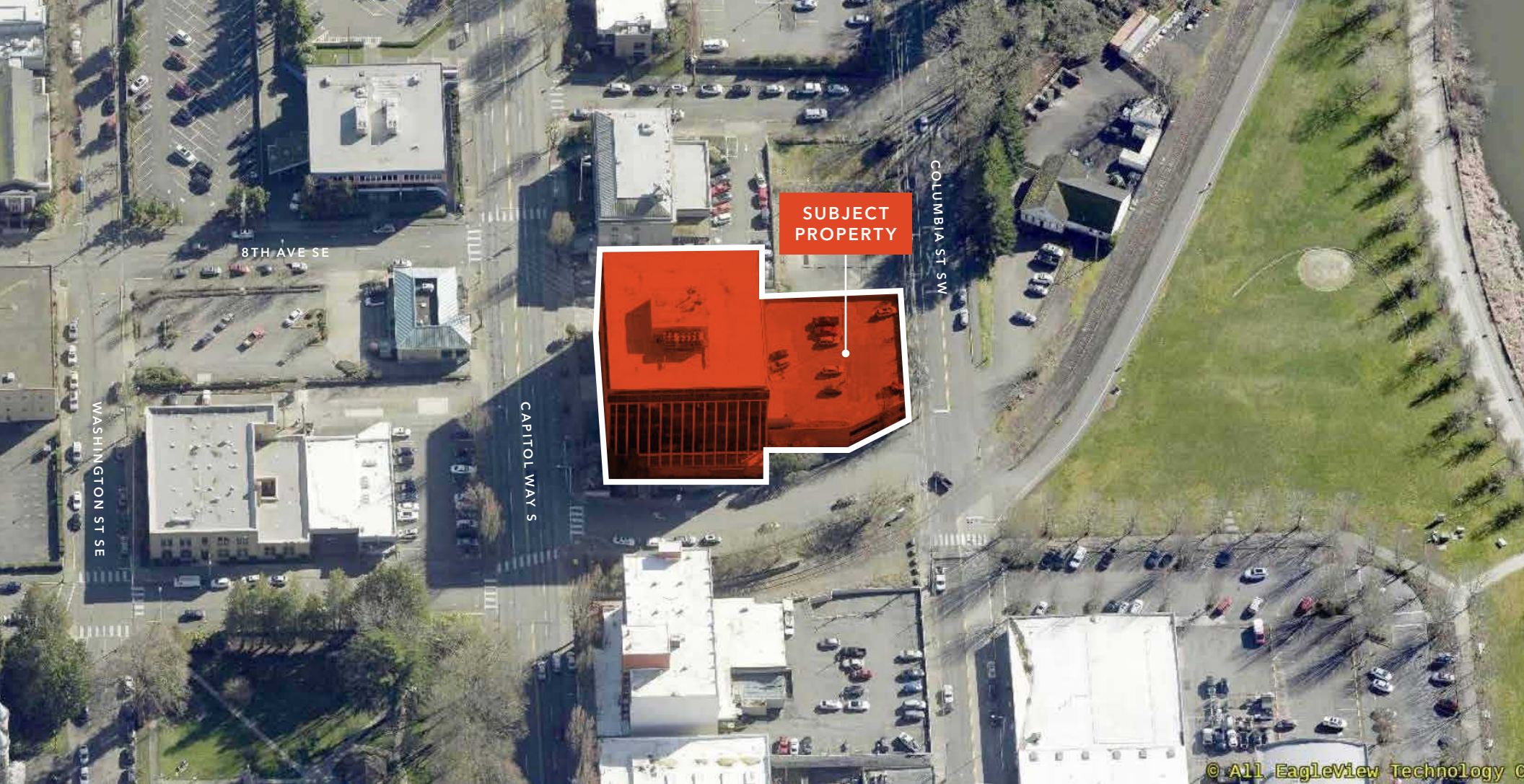
7TH

FLOOR

\$24.00 PSF

702 & 705, FULLY SERVICED

SUITE 702
1,787 SF
KITCHENETTE



© All EagleView Technology C

EVERGREEN PLAZA

*For more information on
this property, please contact*

EVAN PARKER
360.705.0174
evan.parker@kidder.com

AMY HARDING
360.705.1377
amy.harding@kidder.com

KIDDER.COM

This information supplied herein is from sources we deem reliable. It is provided without any representation, warranty, or guarantee, expressed or implied as to its accuracy. Prospective Buyer or Tenant should conduct an independent investigation and verification of all matters deemed to be material, including, but not limited to, statements of income and expenses. Consult your attorney, accountant, or other professional advisor.

