

FORMER SCU BUILDING

FOR LEASE - 3,380 SF AVAILABLE

500 S MICHIGAN ST | SEATTLE, WA 98108

SUITABLE FOR FINANCIAL INSTITUTIONS OR DRIVE-THROUGH FOOD SERVICE OR OFFICE/RETAIL



LEASE INFORMATION

Total Available

3,380 SF

Lease Type

NNN

Lease Rate

Call Broker

PROPERTY HIGHLIGHTS

- Former Seattle Credit Union, turnkey bank build-out
- Existing drive-through window
- Suitable for fast-food or other new use
- Prominent frontage and visibility on S Michigan St
- Existing monument signage for Tenant's exclusive use
- Single-tenant property
- Zoning: MML U/85 – City of Seattle



FLETCHER FARRAR

206.787.1469

ffarrar@neilwalter.com

GRIFFIN DAY

206.787.1474

gday@neilwalter.com

All information references in this document are approximate. The information contained herein is contained from sources deemed reliable. It is provided without representation, warranty, or guarantee, expressed or implied as to accuracy. Prospective buyer or tenant should conduct its own independent investigation relating to the property, government codes and regulations, allowed uses, and all other matters, regardless of whether they are referred to or contained in this document.

FORMER SCU BUILDING

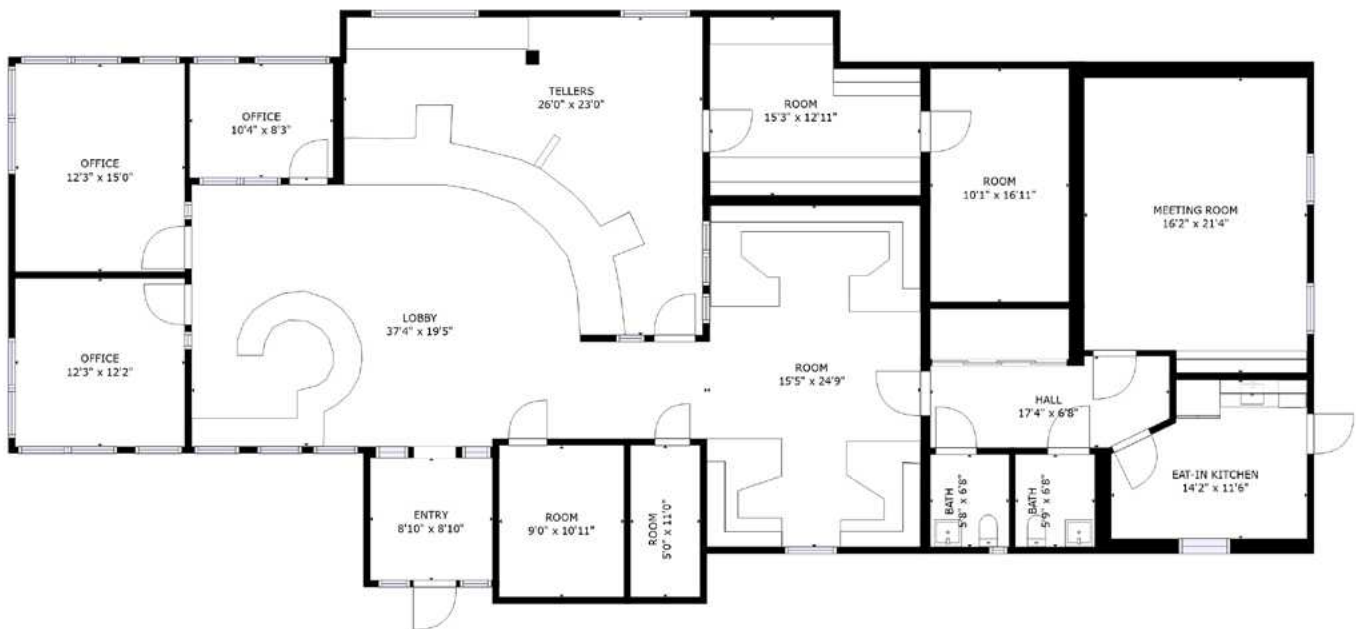
500 S MICHIGAN ST | SEATTLE, WA 98108



Total Available
3,380 SF

Lease Type
NNN

Lease Rate
Call Broker



Click for the Virtual Tour



FLETCHER FARRAR
206.787.1469
ffarrar@neilwalter.com

GRIFFIN DAY
206.787.1474
gday@neilwalter.com

550 S Michigan St
Seattle, WA 98108
206.787.1800
www.neilwalter.com

All information references in this document are approximate. The information contained herein is contained from sources deemed reliable. It is provided without representation, warranty, or guarantee, expressed or implied as to accuracy. Prospective buyer or tenant should conduct its own independent investigation relating to the property, government codes and regulations, allowed uses, and all other matters, regardless of whether they are referred to or contained in this document.

FORMER SCU BUILDING

500 S MICHIGAN ST | SEATTLE, WA 98108



FLETCHER FARRAR
206.787.1469
ffarrar@neilwalter.com

GRIFFIN DAY
206.787.1474
gday@neilwalter.com

550 S Michigan St
Seattle, WA 98108
206.787.1800
www.neilwalter.com

All information references in this document are approximate. The information contained herein is contained from sources deemed reliable. It is provided without representation, warranty, or guarantee, expressed or implied as to accuracy. Prospective buyer or tenant should conduct its own independent investigation relating to the property, government codes and regulations, allowed uses, and all other matters, regardless of whether they are referred to or contained in this document.

FORMER SCU BUILDING

500 S MICHIGAN ST | SEATTLE, WA 98108



POPULATION RADIUS

Radius	1 Mile	3 Mile	5 Mile
2027 Projection	3,747	169,089	421,026
2022 Estimate	3,524	158,346	391,243
2010 Census	3,047	132,298	307,007
Growth 2022-2027	6.33%	6.78%	7.61%
Growth 2010-2022	15.65%	19.69%	27.44%

FLETCHER FARRAR
206.787.1469
ffarrar@neilwalter.com

GRIFFIN DAY
206.787.1474
gday@neilwalter.com

550 S Michigan St
Seattle, WA 98108
206.787.1800
www.neilwalter.com

All information references in this document are approximate. The information contained herein is contained from sources deemed reliable. It is provided without representation, warranty, or guarantee, expressed or implied as to accuracy. Prospective buyer or tenant should conduct its own independent investigation relating to the property, government codes and regulations, allowed uses, and all other matters, regardless of whether they are referred to or contained in this document.