

OFFICE FOR LEASE

REDMOND OFFICE CENTER - BLDG 4

7981 168TH AVENUE NE, REDMOND, WA



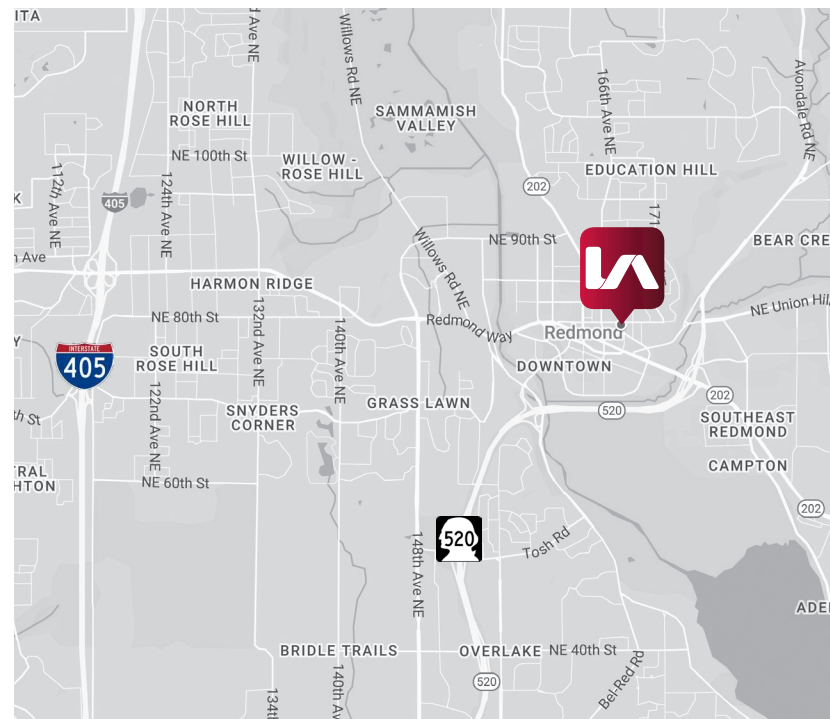
LISTING INFORMATION

AVAILABLE SF: 124 SF - 873 SF
OFFICE LEASE RATE: \$35.00 / SF/ Yr (Full Service)

COMMENTS

The Redmond Office Center features suites designed for one to two people, but with the convenience and prestige of a downtown Redmond address.

- » Great location near Redmond Town Center and SR-522
- » Ample free parking at 4/1,000 SF
- » Nearby amenities include Starbucks, Panera Bread, The UPS Store and Emerald Smoothie



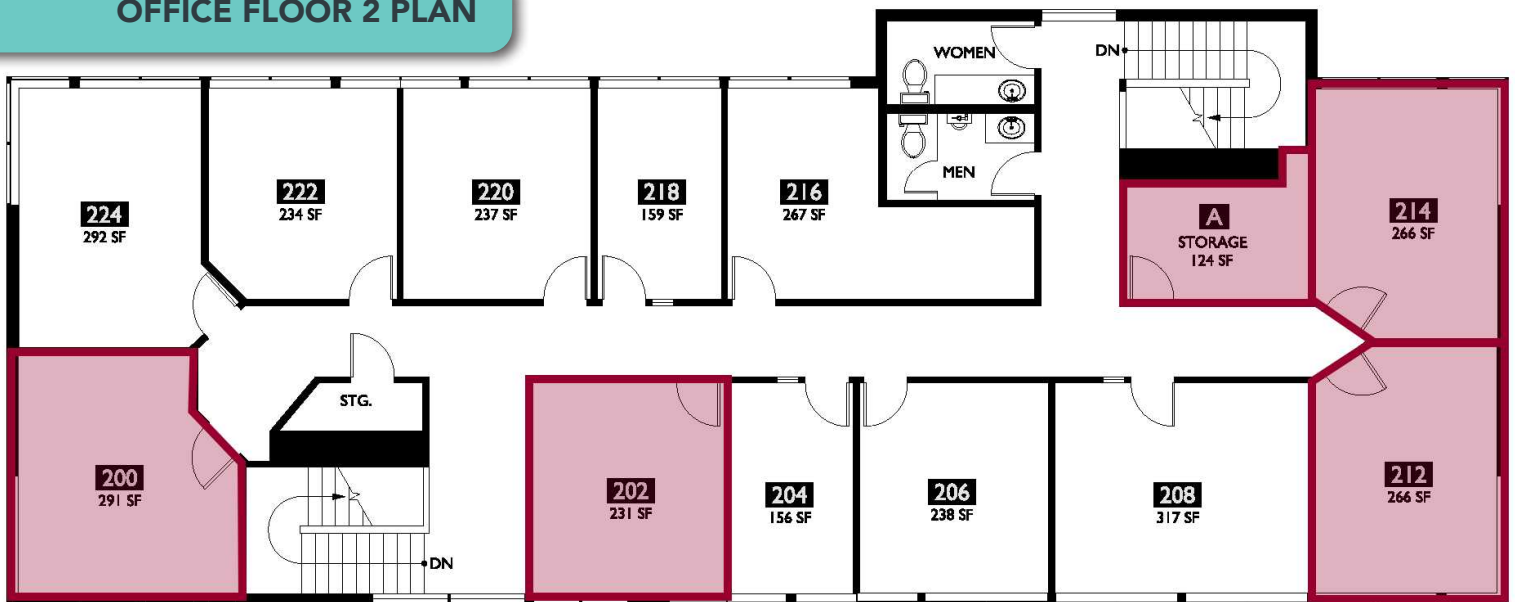
REDMOND OFFICE CENTER - BLDG 4

7981 168TH AVENUE NE, REDMOND, WASHINGTON

OFFICE FLOOR 1 PLAN



OFFICE FLOOR 2 PLAN



CONTACT

Aaron Mathieu

amathieu@lee-associates.com

C 206.948.4670

All information furnished regarding property for sale, rental or financing is from sources deemed reliable, but no warranty or representation is made to the accuracy thereof and same is submitted to errors, omissions, change of price, rental or other conditions prior to sale, lease or financing or withdrawal without notice. No liability of any kind is to be imposed on the broker herein.