



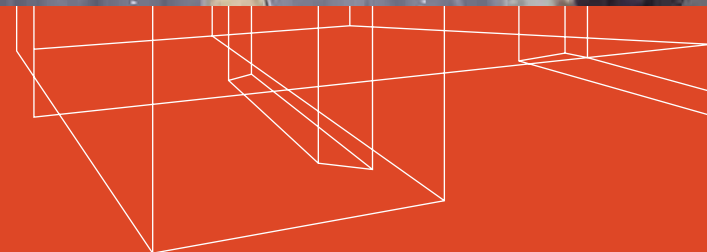
# FORMER COMFORT DENTAL

FOR LEASE | 23241 PACIFIC HWY S | KENT, WA



**JEFF KRAFT**  
206.383.9973  
jeff@westcomproperties.com

**CRAMER FOSTER**  
2253.241.7244  
rcramer@westcomproperties.com



**FOR LEASE**

# Former Comfort Dental

23241 PACIFIC HWY S | KENT, WA



## Lease Rate: \$24 PSF, NNN

2,135 SF

**STAND** alone pad building in anchored center

**CLOSE** to I-5 & new Sound Transit Light Rail stop

**HIGH** visibility on Pacific Hwy and Kent Des Moines Rd

**HUGE** pole sign

**JOIN** Starbucks, Subway, and University of Washington Physicians

**ONE** of the busiest intersections in the state; ±68,000 CPD at S Kent Des Moines Rd & Pacific Hwy S

### DEMOGRAPHICS

	1 Mile	3 Miles	5 Miles
Population	16,012	86,201	201,500
Average HH Income	\$90,850	\$95,185	\$96,565

**JEFF KRAFT**

206.383.9973

[jeff@westcomproperties.com](mailto:jeff@westcomproperties.com)

**CRAMER FOSTER**

253.241.7244

[cramer@westcomproperties.com](mailto:cramer@westcomproperties.com)

This information supplied herein is from sources we deem reliable. It is provided without any representation, warranty, or guarantee, expressed or implied as to its accuracy. Prospective Buyer or Tenant should conduct an independent investigation and verification of all matters deemed to be material, including, but not limited to, statements of income and expenses. Consult your attorney, accountant, or other professional advisor.

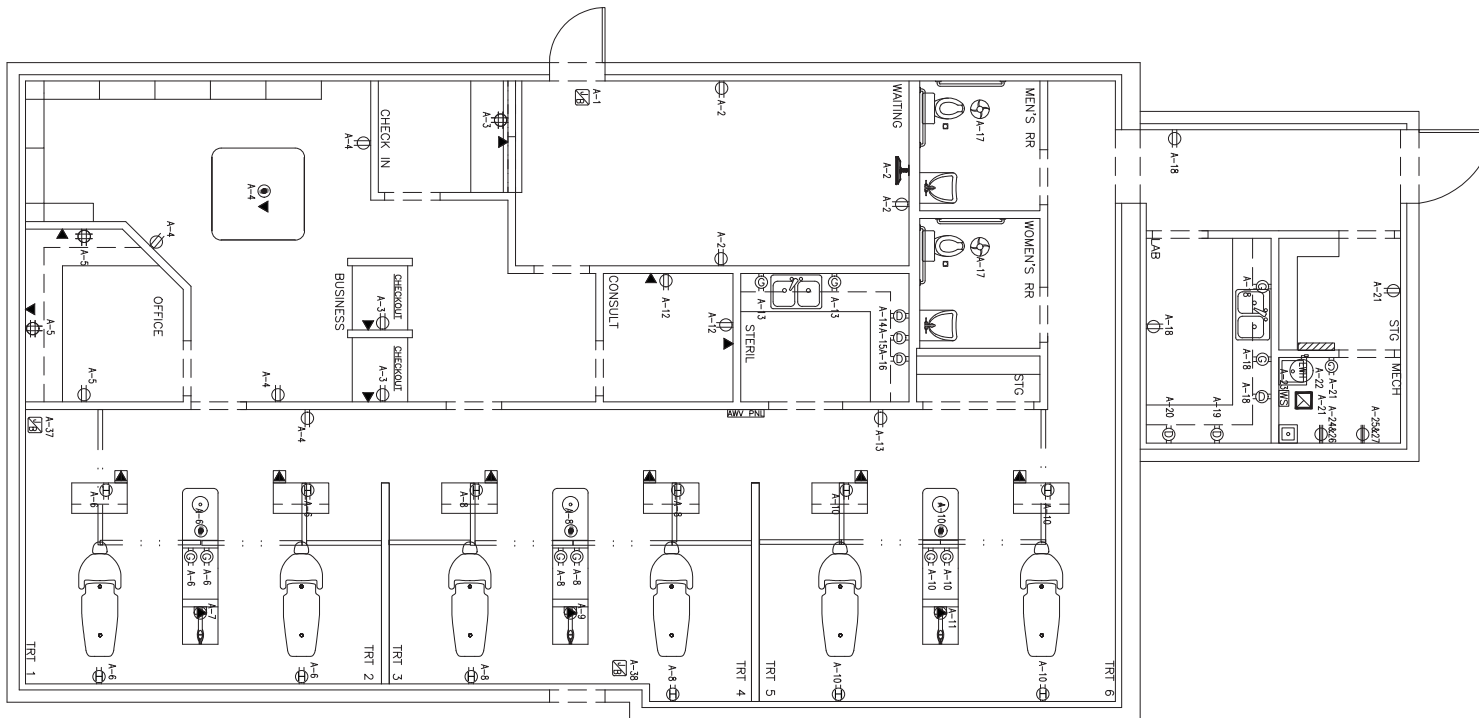
**WestCom**  
PROPERTIES, INC

**FOR LEASE**

# Former Comfort Dental

23241 PACIFIC HWY S | KENT, WA

## Floor Plan



**2,135**  
SQUARE FEET

**\$24.00**

PSF, NNN

**JEFF KRAFT**

206.241.7244

jeff@westcomproperties.com

**CRAMER FOSTER**

253.241.7244

cramer@westcomproperties.com

This information supplied herein is from sources we deem reliable. It is provided without any representation, warranty, or guarantee, expressed or implied as to its accuracy. Prospective Buyer or Tenant should conduct an independent investigation and verification of all matters deemed to be material, including, but not limited to, statements of income and expenses. Consult your attorney, accountant, or other professional advisor.

**WestCom**  
PROPERTIES, INC