



PLAZA 600

Office space for lease

ICONIC SEATTLE

20-story office tower in the center of the Denny Triangle

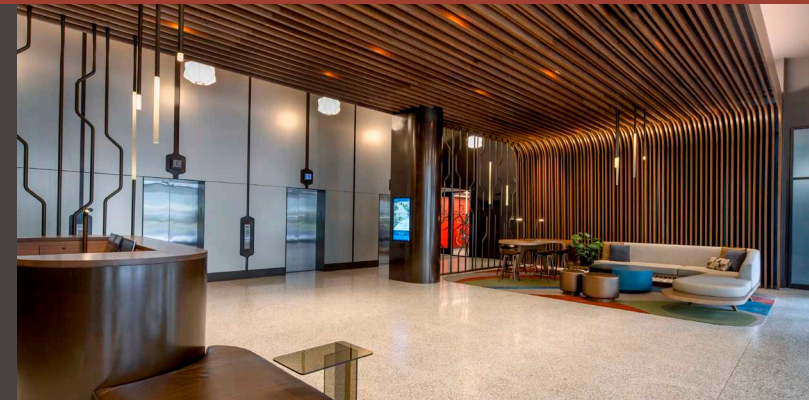
With exceptional view corridors from every floor, and with scenes of the Seattle skyline, Space Needle and Amazon Spheres, Plaza 600 is one of the most sought after destinations in downtown Seattle.

600 Stewart Street | Seattle, WA 98101



ON-SITE PARKING

Newly remodeled lobby, conference center, bike storage with Peloton Bikes, lockers & showers



FITWEL VIRAL RESPONSE CERTIFIED



ON-SITE SECURITY



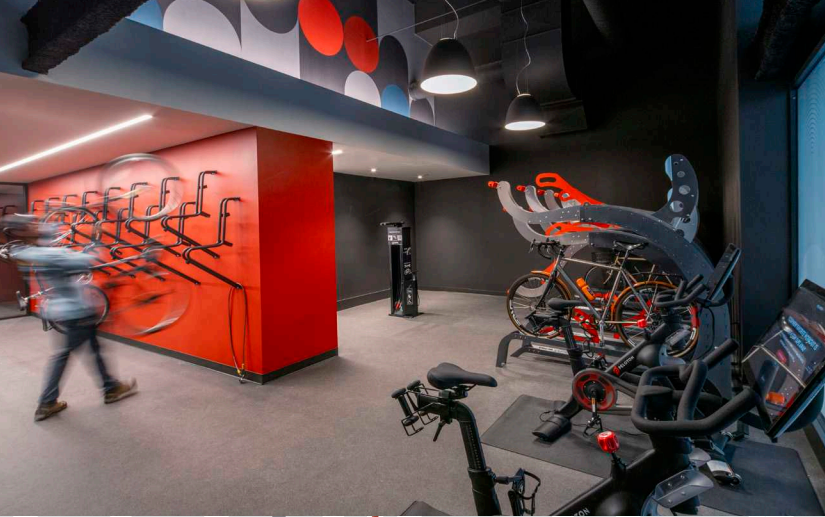
BIKE STORAGE & SHOWERS



PARKING RATIO 0.6/1,000 SF

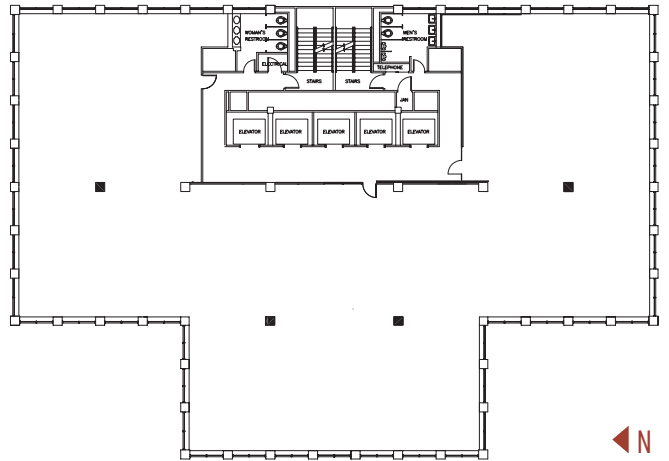


CONFERENCE FACILITY



FLOOR PLAN

REPRESENTATIVE PLAN 11,359 SF



LOCATION

Plaza 600 is centrally located with frontage on Stewart Street, 6th Avenue, and Westlake Avenue, between Seattle's downtown retail core and South Lake Union neighborhood. Major employers in the area include Amazon HQ, Google, Nordstrom, and Facebook.

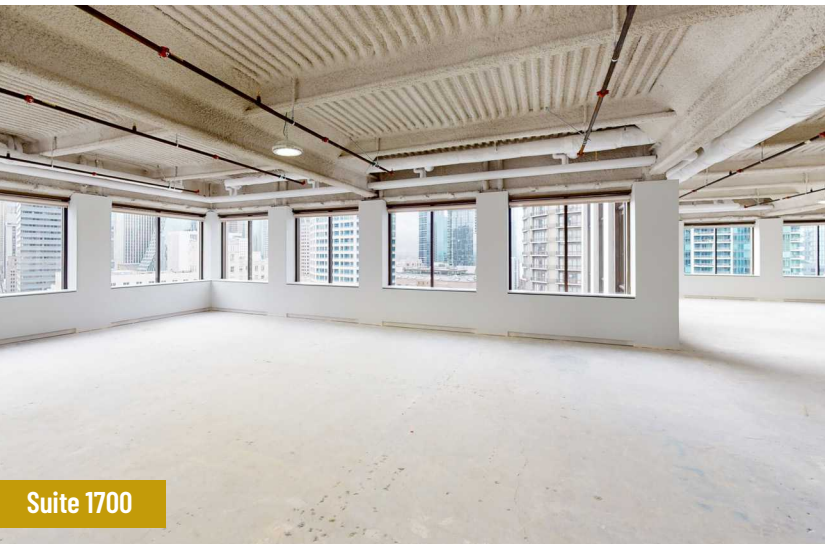
50+ 50+ apartment buildings within walking distance

100 Perfect walk score

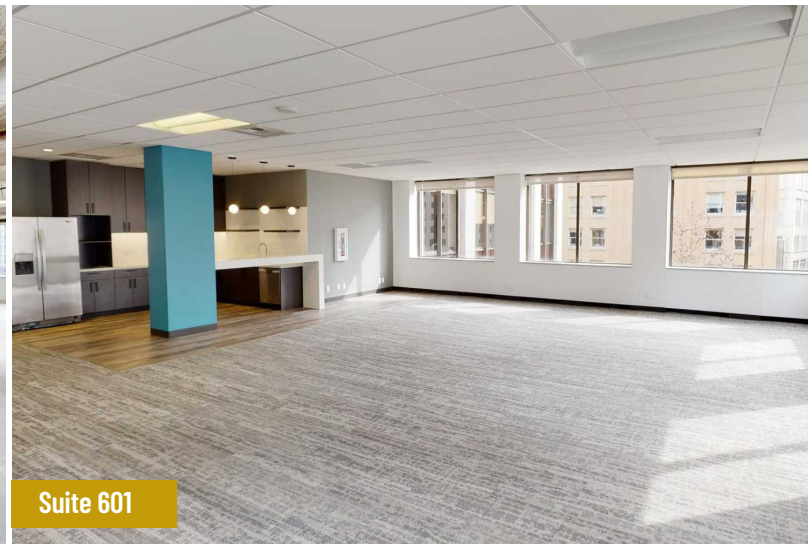
60+ 60+ restaurants within 4 blocks

100 Perfect transit score

Connectivity throughout the city and region via light rail, monorail, metro bus, and street car



Suite 1700



Suite 601



Cleita Harvey +1 206 607 1794 cleita.harvey@jll.com
 Tim Jones +1 206 971 7011 tim.jones@jll.com
 Charlotte Evans +1 206 607 1720 charlotte.evans@jll.com

