

For Lease
Free Standing Commercial Bldg.

NAIBlack



3106 E. Mission Ave.

Spokane, Washington 99201

Property Highlights

- Building Size: 1,200 SF +/- (40'x30')
- Lot Size: 6,970 SF +/-
- Great Exposure
- Massive Pylon Sign
- Two Offices
- 12' Ceilings
- West of Spokane Community College
- Located just west of Mission Ave. and Greene St. intersection
- Owner is a Licensed Real Estate Broker in Washington State



Lease Rate: \$16.00 SF/yr (NNN)

For more information

Jim Orcutt

O: 509 622 3558

jorcutt@naiblack.com

No warranty or representation, expression or implied, is made as to the accuracy of the information contained herein, and the same is submitted subject to errors, omissions, change or price, rental or other conditions, prior to sale, lease, financing, or withdrawal without notice, and of special listing conditions imposed by our principals no warranties or representations are made as to the condition of the property or any hazards contained therein or any to be implied.

801 W. Riverside Avenue, Suite 300
Spokane, WA 99201
509 623 1000 tel
naiblack.com

For Lease
Free Standing Commercial Bldg.

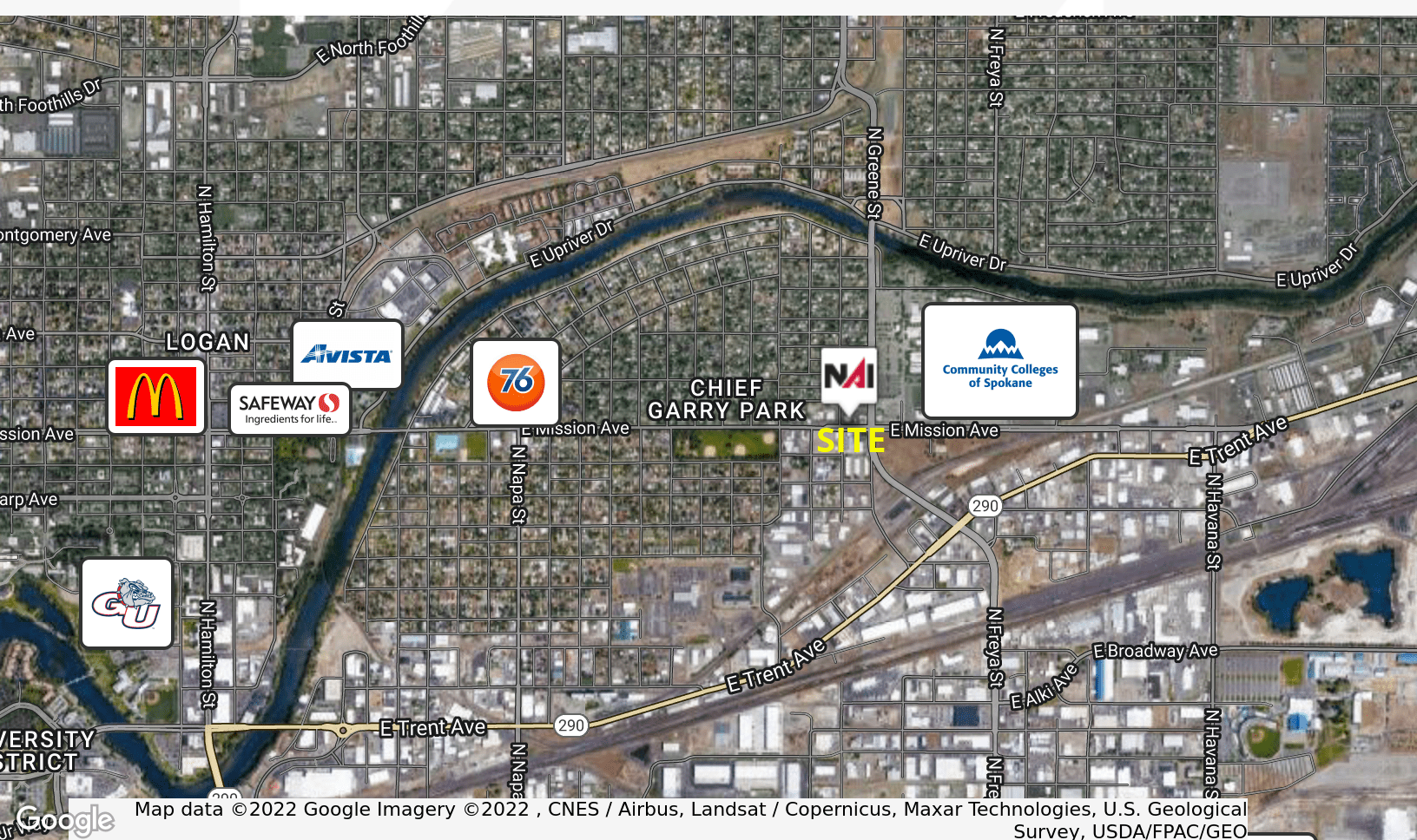
NAIBlack



No warranty or representation, expression or implied, is made as to the accuracy of the information contained herein, and the same is submitted subject to errors, omissions, change or price, rental or other conditions, prior to sale, lease, financing, or withdrawal without notice, and of special listing conditions imposed by our principals no warranties or representations are made as to the condition of the property or any hazards contained therein or any to be implied.

801 W. Riverside Avenue, Suite 300
Spokane, WA 99201
509 623 1000 tel
naiblack.com

For Lease
Free Standing Commercial Bldg.



Map data ©2022 Google Imagery ©2022, CNES / Airbus, Landsat / Copernicus, Maxar Technologies, U.S. Geological Survey, USDA/FPAC/GEO

801 W. Riverside Avenue, Suite 300
Spokane, WA 99201
509 623 1000 tel
naiblack.com

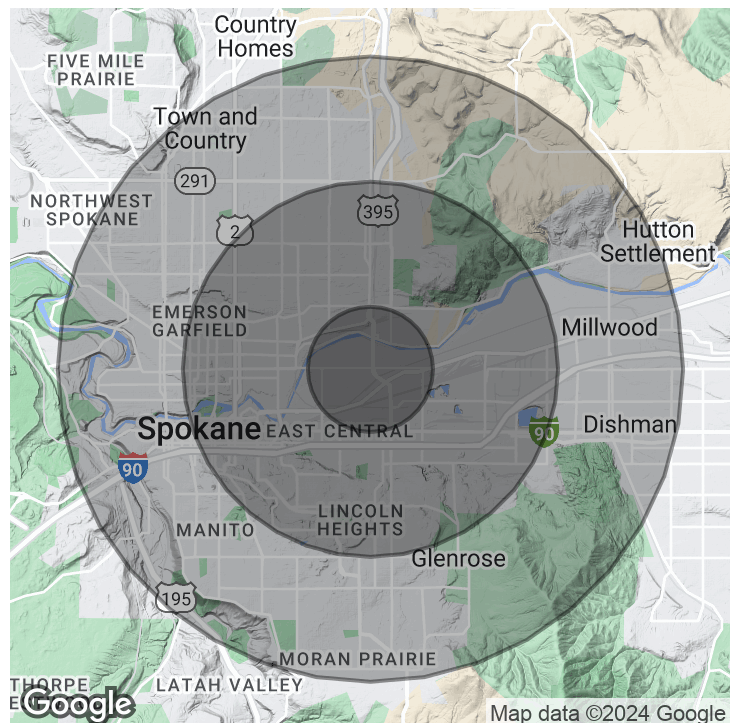
No warranty or representation, expression or implied, is made as to the accuracy of the information contained herein, and the same is submitted subject to errors, omissions, change or price, rental or other conditions, prior to sale, lease, financing, or withdrawal without notice, and of special listing conditions imposed by our principals no warranties or representations are made as to the condition of the property or any hazards contained therein or any to be implied.

For Lease
Free Standing Commercial Bldg.



Population	1 Mile	3 Miles	5 Miles
Total Population	10,119	101,388	251,124
Average Age	34.7	35.5	38
Average Age (Male)	33.7	35.5	36.8
Average Age (Female)	40.2	36.5	39.2
Households & Income	1 Mile	3 Miles	5 Miles
Total Households	4,010	40,108	104,872
# of Persons per HH	2.45	2.37	2.31
Average HH Income	\$70,530	\$76,772	\$89,439
Average House Value	\$152,582	\$167,764	\$198,456

Esri forecast for 2024



No warranty or representation, expression or implied, is made as to the accuracy of the information contained herein, and the same is submitted subject to errors, omissions, change or price, rental or other conditions, prior to sale, lease, financing, or withdrawal without notice, and of special listing conditions imposed by our principals no warranties or representations are made as to the condition of the property or any hazards contained therein or any to be implied.

801 W. Riverside Avenue, Suite 300
Spokane, WA 99201
509 623 1000 tel
naiblack.com