

RETAIL  
LEASE



# FREEWAY CENTER

1327 112th Street SE, Everett, WA 98208

**Stossi Tsantilas**

425.279.7943

[stossit@rosenharbottle.com](mailto:stossit@rosenharbottle.com)

425.454.3030  
[rosenharbottle.com](http://rosenharbottle.com)

PO Box 5003  
Bellevue, WA 98009 - 5003







# RARE RETAIL SPACES AVAILABLE

**946 SF - 1,796 SF Available**

## PROPERTY DETAILS:

- Retail in Silverlake Neighborhood
- Close Proximity to South Everett Park & Ride
- Immediate Access to I-5
- Strong Signage Visibility on 112th Street
- Nearby Retailers: Costco, Safeway, Bartells, 24 Hour Fitness, & More

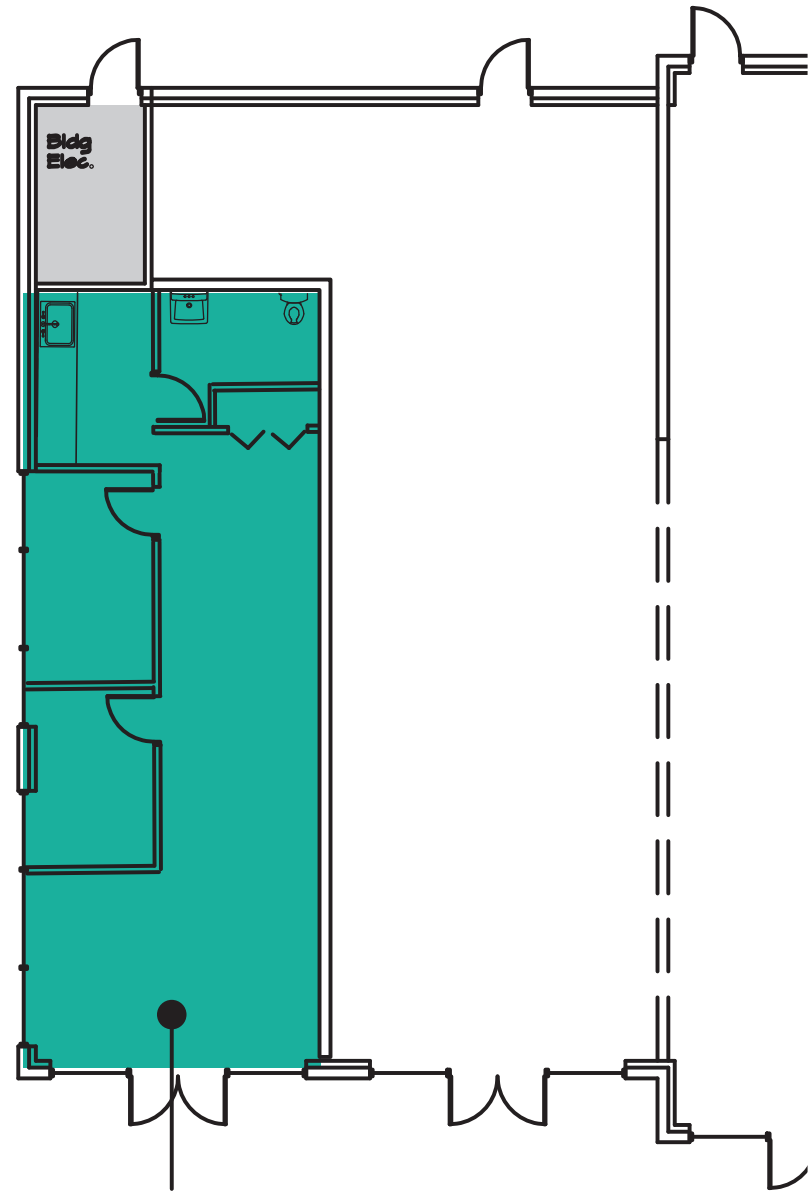
The information provided herein has been obtained from sources believed to be reliable, but no representation or warranty, express or implied, is made with respect to the accuracy or completeness of any such information. Each prospective buyer or tenant should independently investigate, evaluate and verify all information provided herein and any other matters deemed material. Please consult your attorney, tax advisor or other professional advisor. The terms of sale or lease set forth herein are subject to change or withdrawal at any time and without notice.

# SUITE A-1 FLOOR PLAN

## SUITE FEATURES

---

- Available 2/1/2025
- 946 SF
- \$2,290/Month, NNN
- Endcap Retail Space
- High Ceiling
- Extended Windowline
- Open Work Area
- One Restroom



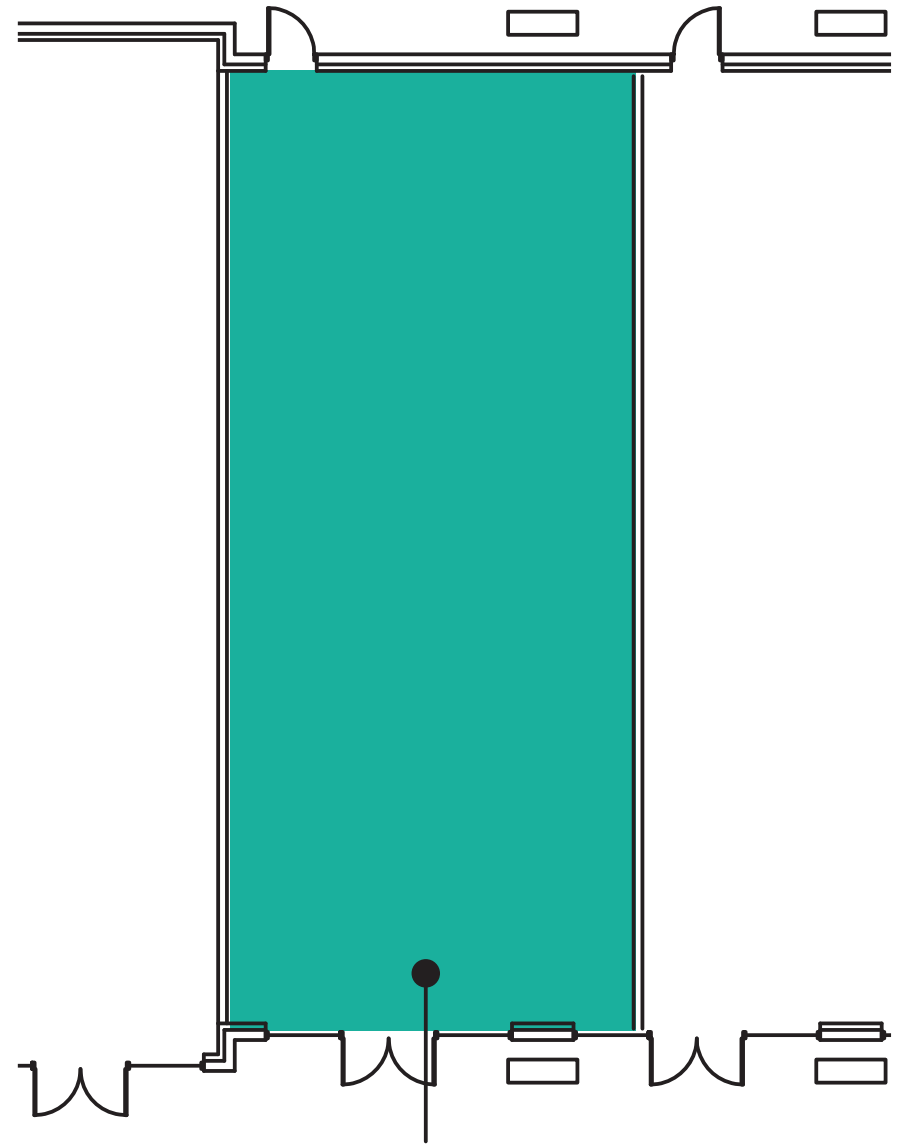
**Suite  
A-1  
946 SF**

# SUITE E FLOOR PLAN

## SUITE FEATURES

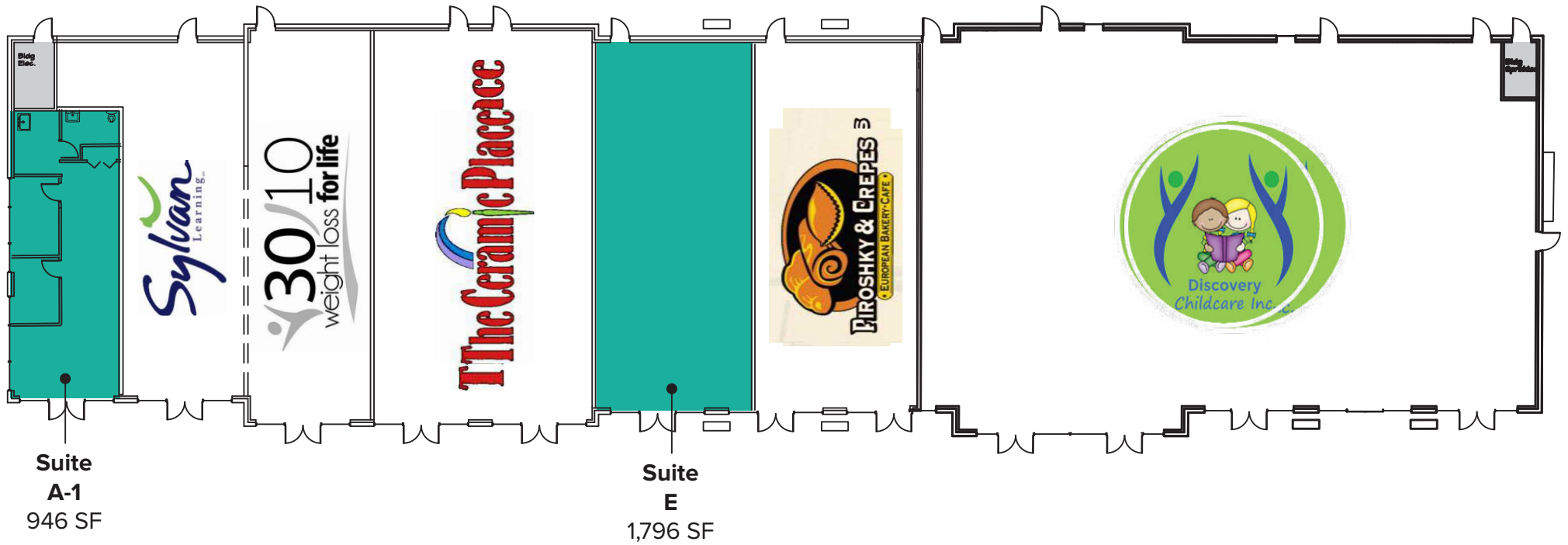
---

- Available 3/1/2025
- 1,796 SF
- \$26.00/SF, NNN
- High Ceiling
- Extended Windowline
- Open Retail Showroom
- One Restroom



**Suite  
E**  
1,796 SF

# SITE PLAN



The information provided herein has been obtained from sources believed to be reliable, but no representation or warranty, express or implied, is made with respect to the accuracy or completeness of any such information. Each prospective buyer or tenant should independently investigate, evaluate and verify all information provided herein and any other matters deemed material. Please consult your attorney, tax advisor or other professional advisor. The terms of sale or lease set forth herein are subject to change or withdrawal at any time and without notice.



# LOCATION MAP

