

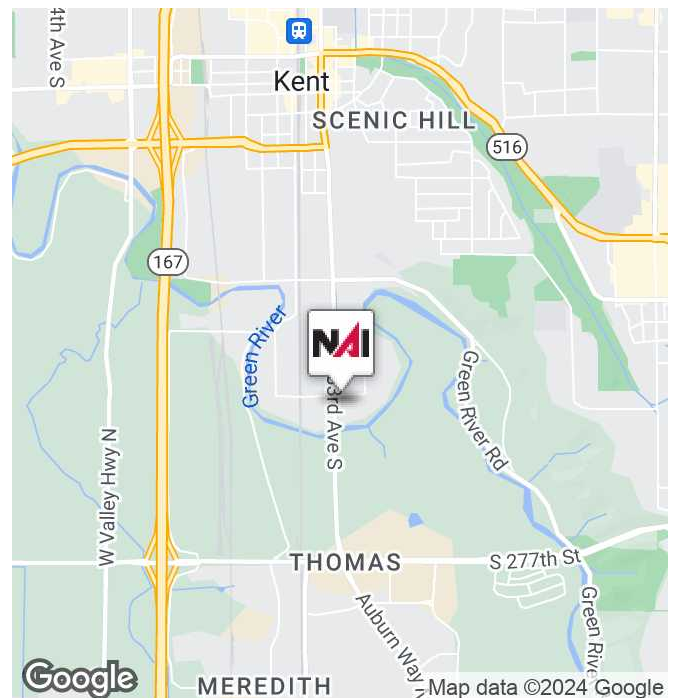


# 1851 Central Pl S Suite 211

Kent, Washington 98030

## Property Highlights

- 2,300 SF Professional Office Space
- Well Maintained Building - Built in 1980
- Professionally Managed
- NNN Lease
- Ample Parking
- High Profile Location – Just South of Downtown Kent
- Lease Rate: \$14.00/SF/YR, NNN



**Kyle Sterling**

Partner | 425.586.5608  
ksterling@nai-pp.com

**Mike George**

Partner | 425.586.5618  
mgeorge@nai-pp.com



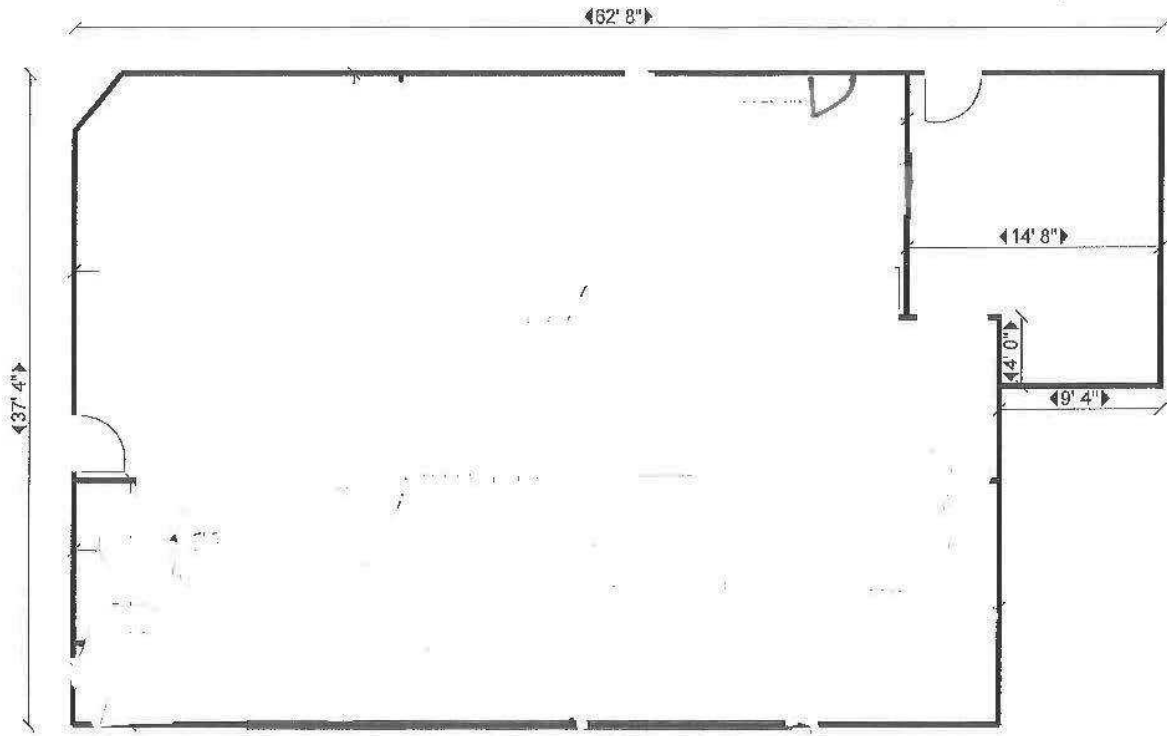
FOR LEASE



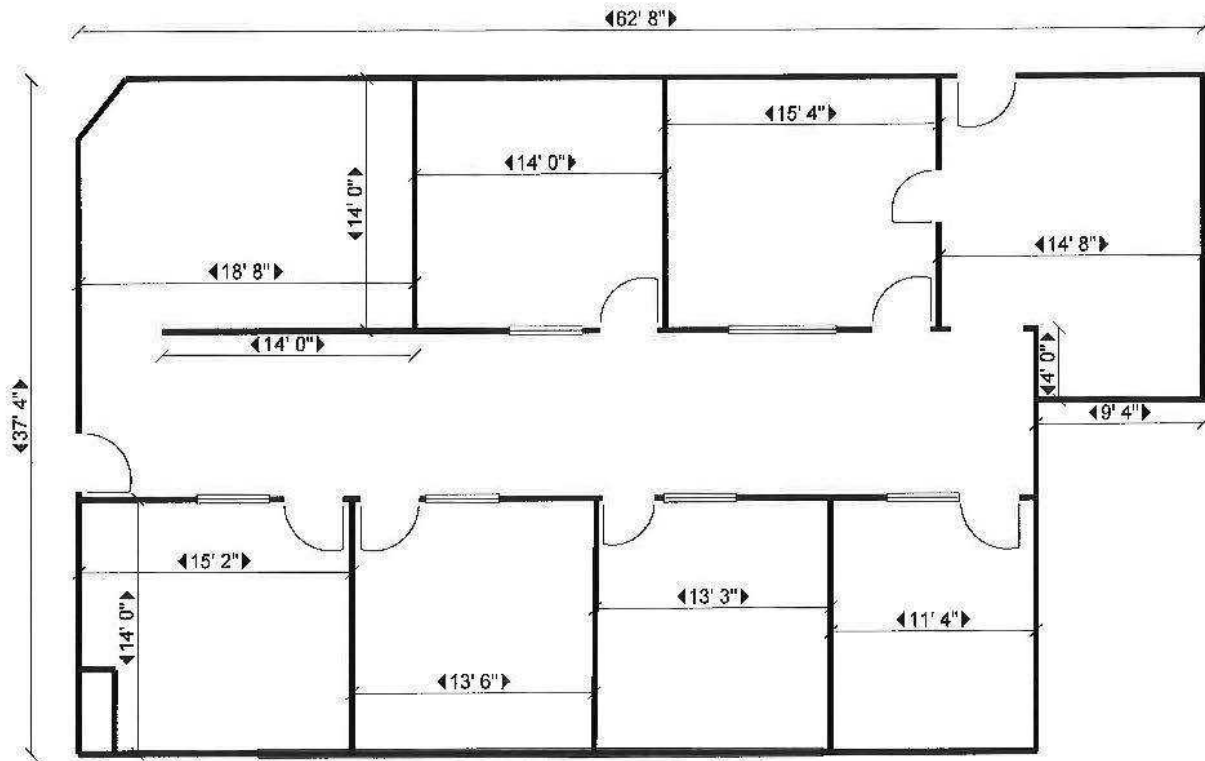
OFFICE



2,300 SF



Current Floor Plan



Proposed Office Build-Out

**Kyle Sterling**

Partner | 425.586.5608  
ksterling@nai-psp.com

**Mike George**

Partner | 425.586.5618  
mgeorge@nai-psp.com





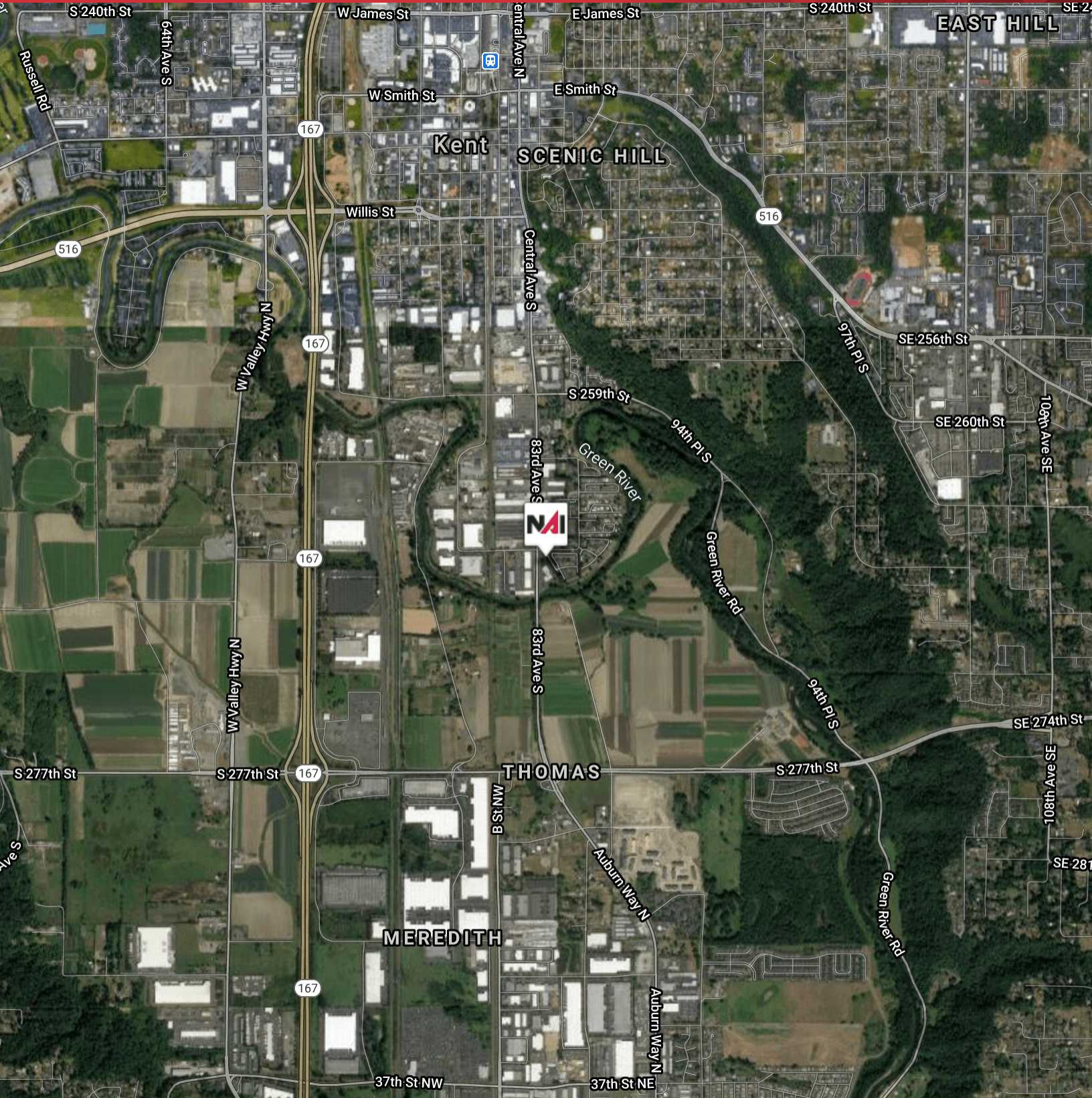
FOR LEASE



OFFICE



2,300 SF



Map data ©2021 Google Imagery ©2021, CNES / Airbus, Landsat / Copernicus, Maxar Technologies, U.S. Geological Survey, USDA Farm Service Agency

**Kyle Sterling**  
Partner | 425.586.5608  
ksterling@nai-psp.com

**Mike George**  
Partner | 425.586.5618  
mgeorge@nai-psp.com



<https://www.nai-psp.com>

THE INFORMATION SUPPLIED HEREIN IS FROM SOURCES WE DEEM RELIABLE. IT IS PROVIDED WITHOUT ANY REPRESENTATION, WARRANTY OR GUARANTEE, EXPRESSED OR IMPLIED, AS TO ITS ACCURACY. PROSPECTIVE BUYER OR TENANT SHOULD CONDUCT AN INDEPENDENT INVESTIGATION AND VERIFICATION OF ALL MATTERS DEEMED TO BE MATERIAL, INCLUDING, BUT NOT LIMITED TO, STATEMENTS OF INCOME AND EXPENSES. CONSULT YOUR ATTORNEY, ACCOUNTANT OR OTHER PROFESSIONAL ADVISOR.