

AUBURN PARK 277



*Industrial Space
For Lease*

31,045
AVAILABLE SF

SEVEN
DH DOORS

30'
CLEAR HEIGHT

31,045 SF total with 1,781 SF office

ESFR sprinkler system

7 dock-high doors

1 grade level door

Immediate access to SR-167 and quick I-5 access

No city B&O tax

30' clear height

Available February 1, 2025, or possibly sooner

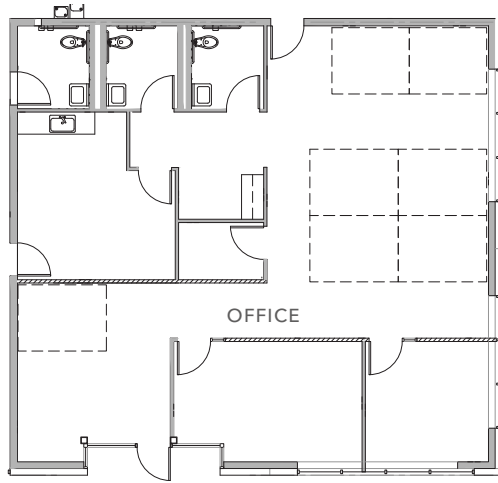
DOUG KLEIN, SIOR
206.248.7348
doug.klein@kidder.com

TRAVIS STANAWAY
206.248.6526
travis.stanaway@kidder.com

KIDDER.COM

This information supplied herein is from sources we deem reliable. It is provided without any representation, warranty, or guarantee, expressed or implied as to its accuracy. Prospective Buyer or Tenant should conduct an independent investigation and verification of all matters deemed to be material, including, but not limited to, statements of income and expenses. Consult your attorney, accountant, or other professional advisor.

SUITE D | FLOORPLAN



31,045 SF

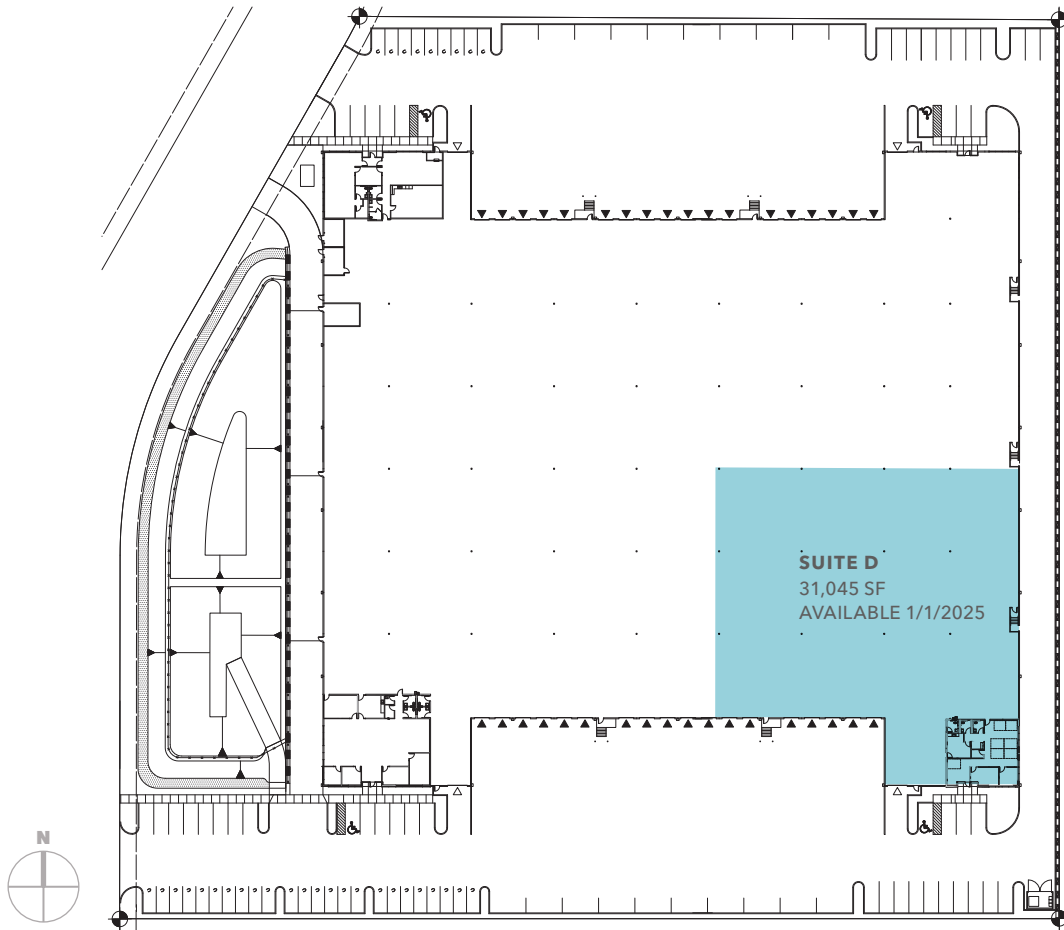
TOTAL AREA

1,781 SF

OFFICE AREA

02/1/2025

AVAILABLE, OR SOONER



KIDDER.COM

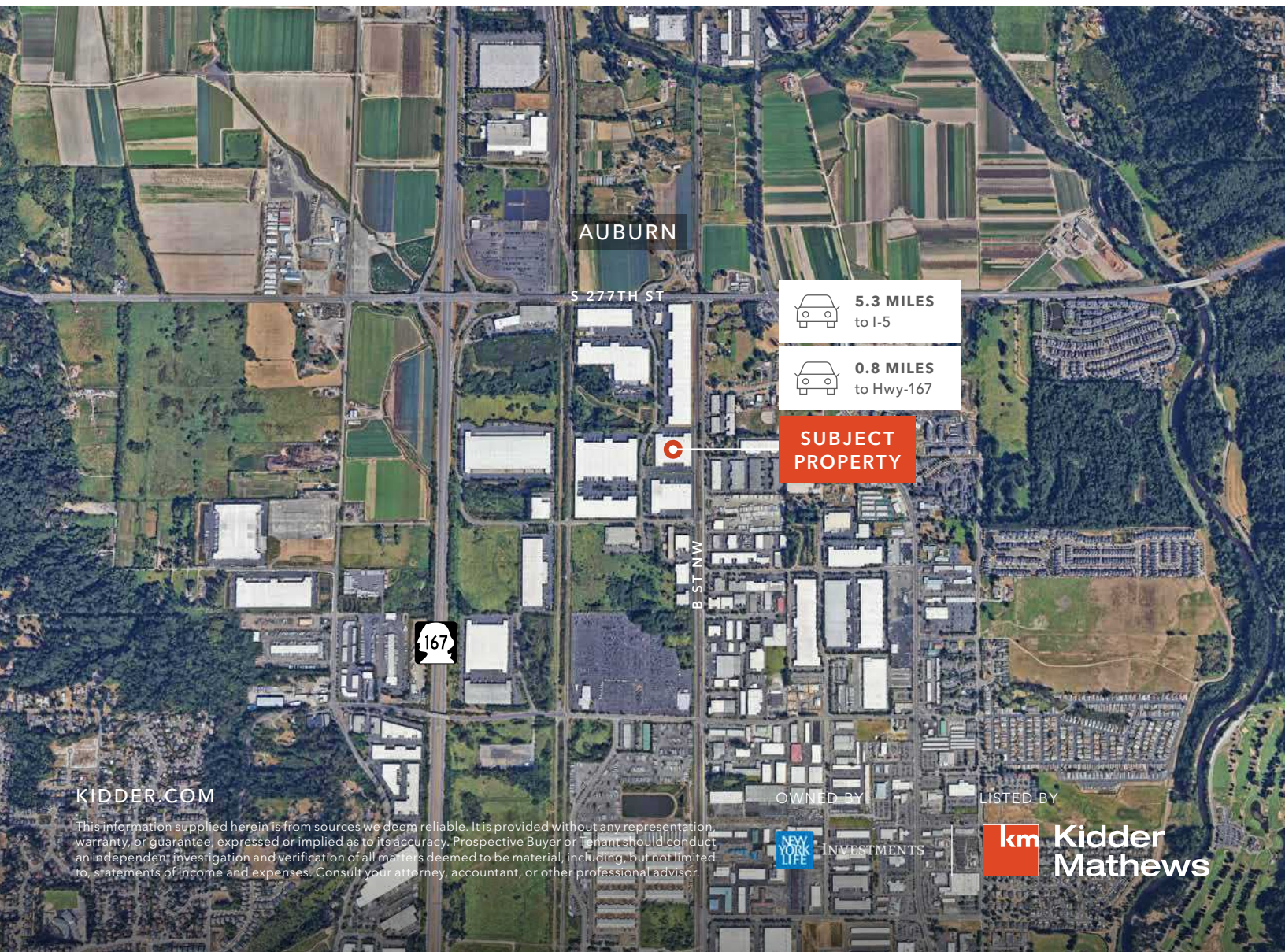
This information supplied herein is from sources we deem reliable. It is provided without any representation, warranty, or guarantee, expressed or implied as to its accuracy. Prospective Buyer or Tenant should conduct an independent investigation and verification of all matters deemed to be material, including, but not limited to, statements of income and expenses. Consult your attorney, accountant, or other professional advisor.

OWNED BY




LISTED BY





 **5.3 MILES**
to I-5

 **0.8 MILES**
to Hwy-167

**SUBJECT
PROPERTY**

KIDDER.COM

This information supplied herein is from sources we deem reliable. It is provided without any representation, warranty, or guarantee, expressed or implied as to its accuracy. Prospective Buyer or Tenant should conduct an independent investigation and verification of all matters deemed to be material, including, but not limited to, statements of income and expenses. Consult your attorney, accountant, or other professional advisor.

OWNED BY
 INVESTMENTS

LISTED BY
 **Kidder
Mathews**