

3,697 SF  
OFFICE



FOR LEASE

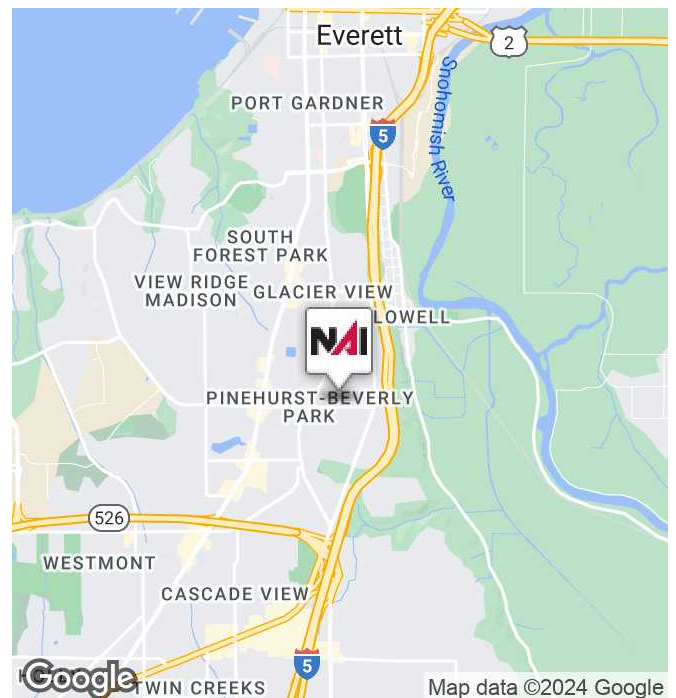


## 2002 Madison Bldg

2002 Madison St, Everett, WA 98203

### Property Highlights

- Newly renovated professional office building available.
- Ideally suited for a Real Estate office, Architect, Law Firm or other professional office requirement.
- Reception area, private offices, bullpen, conference room and kitchenette
- within 3 miles of Snohomish County Courthouse and Everett Mall Retail area.



<https://www.nai-ppsp.com>

**Blake Stedman**  
Senior Vice President | 425.652.1722  
bstedman@nai-ppsp.com

**Richard Zhou**  
Associate | 425.586.5623  
rzhou@nai-ppsp.com | WA #22007790

NO WARRANTY, EXPRESS OR IMPLIED, IS MADE AS TO THE ACCURACY OF THE INFORMATION CONTAINED HEREIN. THIS INFORMATION IS SUBMITTED SUBJECT TO ERRORS, OMISSIONS, CHANGE OF PRICE, RENTAL OR OTHER CONDITIONS, WITHDRAWAL WITHOUT NOTICE, AND IS SUBJECT TO ANY SPECIAL LISTING CONDITIONS IMPOSED BY OUR PRINCIPALS. COOPERATING BROKERS, BUYERS, TENANTS AND OTHER PARTIES WHO RECEIVE THIS DOCUMENT SHOULD NOT RELY ON IT, BUT SHOULD USE IT AS A STARTING POINT OF ANALYSIS, AND SHOULD INDEPENDENTLY CONFIRM THE ACCURACY OF THE INFORMATION CONTAINED HEREIN THROUGH A DUE DILIGENCE REVIEW OF THE BOOKS, RECORDS, FILES AND DOCUMENTS THAT CONSTITUTE RELIABLE SOURCES OF THE INFORMATION DESCRIBED HEREIN. LOGOS ARE FOR IDENTIFICATION PURPOSES ONLY AND MAY BE TRADEMARKS OF THEIR RESPECTIVE COMPANIES.

3,697 SF  
OFFICE



FOR LEASE



## OFFERING SUMMARY

Building Size:	3,697 SF
Zoning:	B1
Year Built:	1920
Renovated:	2020
Lot Size:	0.14 Acers
Market:	Central Everett
Available SF:	3,697 SF
Lease Rate:	\$15.00 SF/yr (NNN)
Submarket:	Pinehurst-Beverly Park

## PROPERTY DESCRIPTION

Newly renovated professional office building available. Renovation includes new carpet, paint, HVAC, kitchenette, conference room, reception area, bullpen and private offices. Ideally suited for a Real Estate office, Architect or Law Firm or other professional office requirement.

## PROPERTY HIGHLIGHTS

- Newly renovated professional office building available.
- Ideally suited for a Real Estate office, Architect, Law Firm or other professional office requirement.
- Reception area, private offices, bullpen, conference room and kitchenette
- within 3 miles of Snohomish County Courthouse and Everett Mall Retail area.



<https://www.nai-pp.com>

**Blake Stedman**  
Senior Vice President | 425.652.1722  
bstedman@nai-pp.com

**Richard Zhou**  
Associate | 425.586.5623  
rzhou@nai-pp.com | WA #22007790

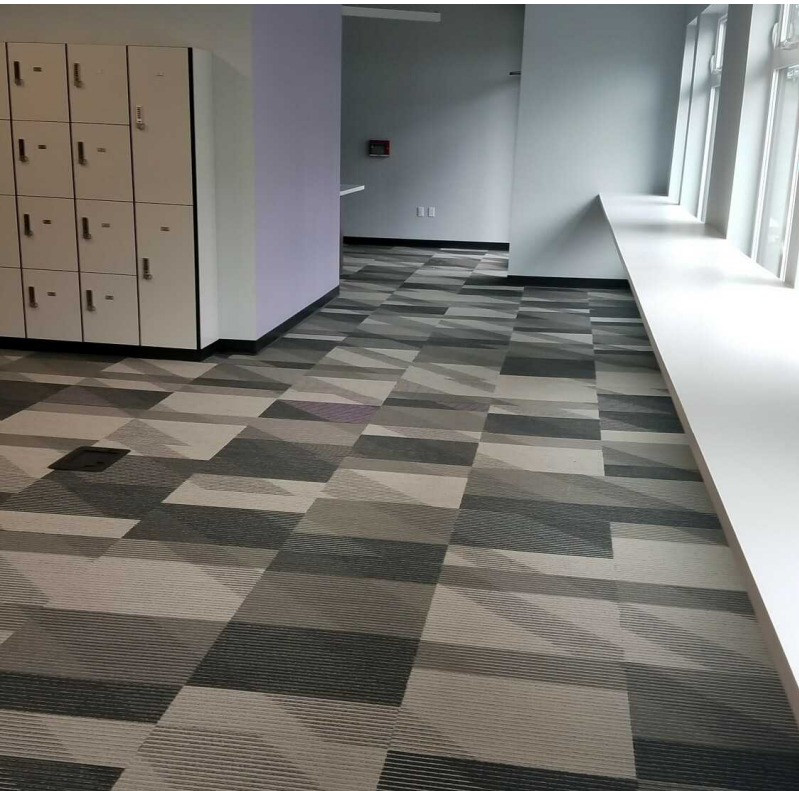
NO WARRANTY, EXPRESS OR IMPLIED, IS MADE AS TO THE ACCURACY OF THE INFORMATION CONTAINED HEREIN. THIS INFORMATION IS SUBMITTED SUBJECT TO ERRORS, OMISSIONS, CHANGE OF PRICE, RENTAL OR OTHER CONDITIONS, WITHDRAWAL WITHOUT NOTICE, AND IS SUBJECT TO ANY SPECIAL LISTING CONDITIONS IMPOSED BY OUR PRINCIPALS. COOPERATING BROKERS, BUYERS, TENANTS AND OTHER PARTIES WHO RECEIVE THIS DOCUMENT SHOULD NOT RELY ON IT, BUT SHOULD USE IT AS A STARTING POINT OF ANALYSIS, AND SHOULD INDEPENDENTLY CONFIRM THE ACCURACY OF THE INFORMATION CONTAINED HEREIN THROUGH A DUE DILIGENCE REVIEW OF THE BOOKS, RECORDS, FILES AND DOCUMENTS THAT CONSTITUTE RELIABLE SOURCES OF THE INFORMATION DESCRIBED HEREIN. LOGOS ARE FOR IDENTIFICATION PURPOSES ONLY AND MAY BE TRADEMARKS OF THEIR RESPECTIVE COMPANIES.



3,697 SF  
OFFICE



FOR LEASE



**NAI** Puget Sound  
Properties

<https://www.nai-pp.com>

**Blake Stedman**  
Senior Vice President | 425.652.1722  
bstedman@nai-pp.com

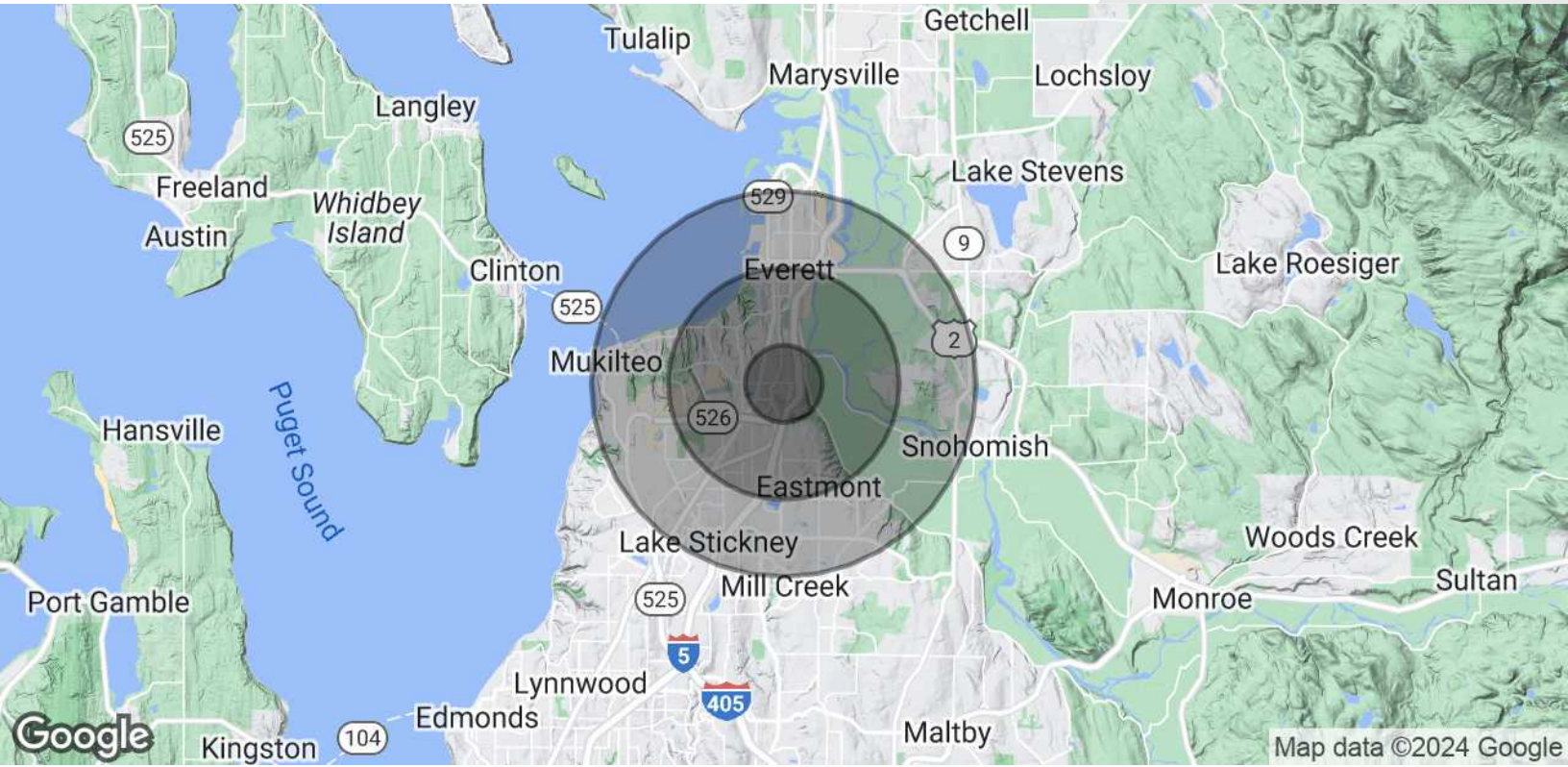
**Richard Zhou**  
Associate | 425.586.5623  
rzhou@nai-pp.com | WA #22007790

NO WARRANTY, EXPRESS OR IMPLIED, IS MADE AS TO THE ACCURACY OF THE INFORMATION CONTAINED HEREIN. THIS INFORMATION IS SUBMITTED SUBJECT TO ERRORS, OMISSIONS, CHANGE OF PRICE, RENTAL OR OTHER CONDITIONS, WITHDRAWAL WITHOUT NOTICE, AND IS SUBJECT TO ANY SPECIAL LISTING CONDITIONS IMPOSED BY OUR PRINCIPALS, COOPERATING BROKERS, BUYERS, TENANTS AND OTHER PARTIES WHO RECEIVE THIS DOCUMENT SHOULD NOT RELY ON IT, BUT SHOULD USE IT AS A STARTING POINT OF ANALYSIS, AND SHOULD INDEPENDENTLY CONFIRM THE ACCURACY OF THE INFORMATION CONTAINED HEREIN THROUGH A DUE DILIGENCE REVIEW OF THE BOOKS, RECORDS, FILES AND DOCUMENTS THAT CONSTITUTE RELIABLE SOURCES OF THE INFORMATION DESCRIBED HEREIN. LOGOS ARE FOR IDENTIFICATION PURPOSES ONLY AND MAY BE TRADEMARKS OF THEIR RESPECTIVE COMPANIES.

# 3,697 SF OFFICE



## FOR LEASE



POPULATION	1 MILE	3 MILES	5 MILES
Total Population	12,167	85,828	200,469
Average Age	40.3	38.1	38.0
Average Age (Male)	38.6	37.5	36.8
Average Age (Female)	41.8	38.7	39.1
HOUSEHOLDS & INCOME	1 MILE	3 MILES	5 MILES
Total Households	5,026	34,836	80,656
# of Persons per HH	2.4	2.5	2.5
Average HH Income	\$78,067	\$80,026	\$89,454
Average House Value	\$339,081	\$326,556	\$352,995

2020 American Community Survey (ACS)



<https://www.nai-pp.com>

**Blake Stedman**  
Senior Vice President | 425.652.1722  
bstedman@nai-pp.com

**Richard Zhou**  
Associate | 425.586.5623  
rzhou@nai-pp.com | WA #22007790

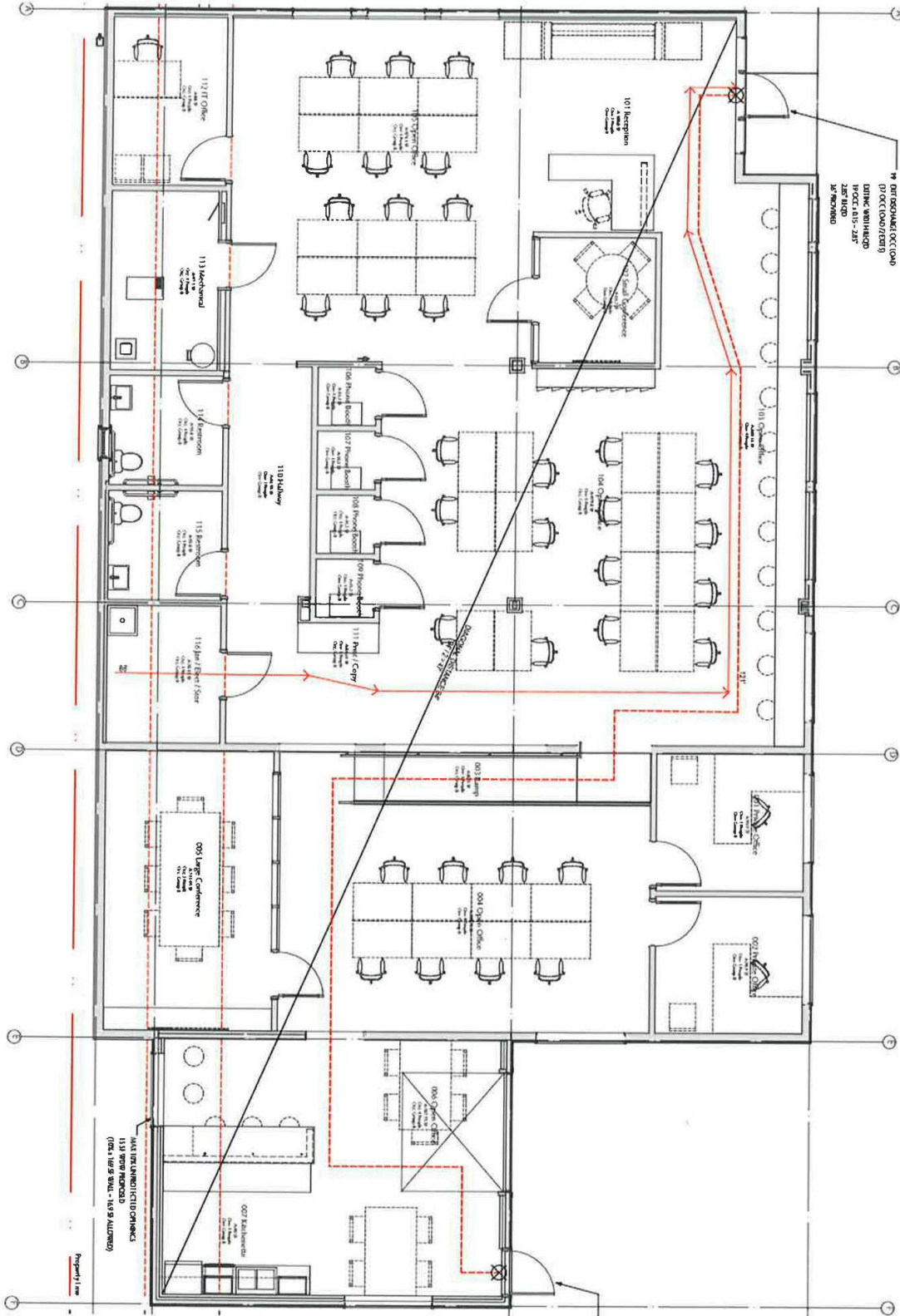
NO WARRANTY, EXPRESS OR IMPLIED, IS MADE AS TO THE ACCURACY OF THE INFORMATION CONTAINED HEREIN. THIS INFORMATION IS SUBMITTED SUBJECT TO ERRORS, OMISSIONS, CHANGE OF PRICE, RENTAL OR OTHER CONDITIONS, WITHDRAWAL WITHOUT NOTICE, AND IS SUBJECT TO ANY SPECIAL LISTING CONDITIONS IMPOSED BY OUR PRINCIPALS, COOPERATING BROKERS, BUYERS, TENANTS AND OTHER PARTIES WHO RECEIVE THIS DOCUMENT SHOULD NOT RELY ON IT, BUT SHOULD USE IT AS A STARTING POINT OF ANALYSIS, AND SHOULD INDEPENDENTLY CONFIRM THE ACCURACY OF THE INFORMATION CONTAINED HEREIN THROUGH A DUE DILIGENCE REVIEW OF THE BOOKS, RECORDS, FILES AND DOCUMENTS THAT CONSTITUTE RELIABLE SOURCES OF THE INFORMATION DESCRIBED HEREIN. LOGOS ARE FOR IDENTIFICATION PURPOSES ONLY AND MAY BE TRADEMARKS OF THEIR RESPECTIVE COMPANIES.



# 3,697 SF OFFICE



## FOR LEASE



**Blake Stedman**  
Senior Vice President | 425.652.1722  
bstedman@nai-pp.com

**Richard Zhou**  
Associate | 425.586.5623  
rzhou@nai-pp.com | WA #22007790



<https://www.nai-pp.com>

NO WARRANTY, EXPRESS OR IMPLIED, IS MADE AS TO THE ACCURACY OF THE INFORMATION CONTAINED HEREIN. THIS INFORMATION IS SUBMITTED SUBJECT TO ERRORS, OMISSIONS, CHANGE OF PRICE, RENTAL OR OTHER CONDITIONS, WITHDRAWAL WITHOUT NOTICE, AND IS SUBJECT TO ANY SPECIAL LISTING CONDITIONS IMPOSED BY OUR PRINCIPALS, COOPERATING BROKERS, BUYERS, TENANTS AND OTHER PARTIES WHO RECEIVE THIS DOCUMENT SHOULD NOT RELY ON IT, BUT SHOULD USE IT AS A STARTING POINT OF ANALYSIS, AND SHOULD INDEPENDENTLY CONFIRM THE ACCURACY OF THE INFORMATION CONTAINED HEREIN THROUGH A DUE DILIGENCE REVIEW OF THE BOOKS, RECORDS, FILES AND DOCUMENTS THAT CONSTITUTE RELIABLE SOURCES OF THE INFORMATION DESCRIBED HEREIN. LOGOS ARE FOR IDENTIFICATION PURPOSES ONLY AND MAY BE TRADEMARKS OF THEIR RESPECTIVE COMPANIES.