

# Kenmore Lake Building

6161 NE 175th Street  
Kenmore, WA 98028



## Kenmore Lake Building

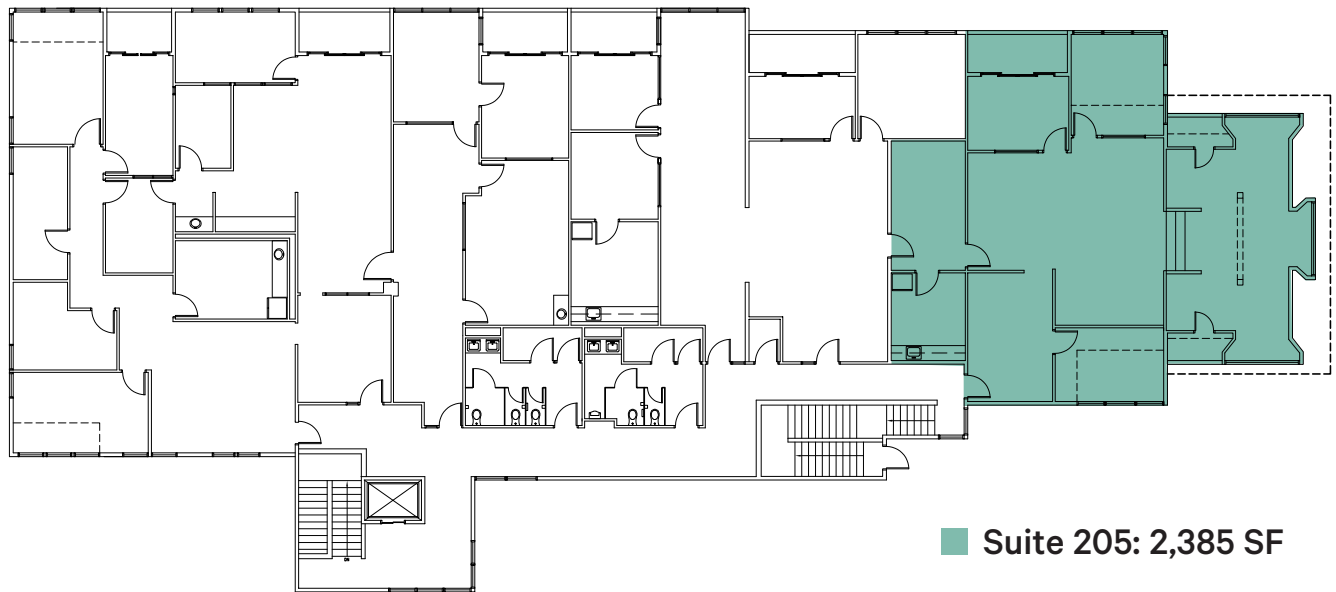
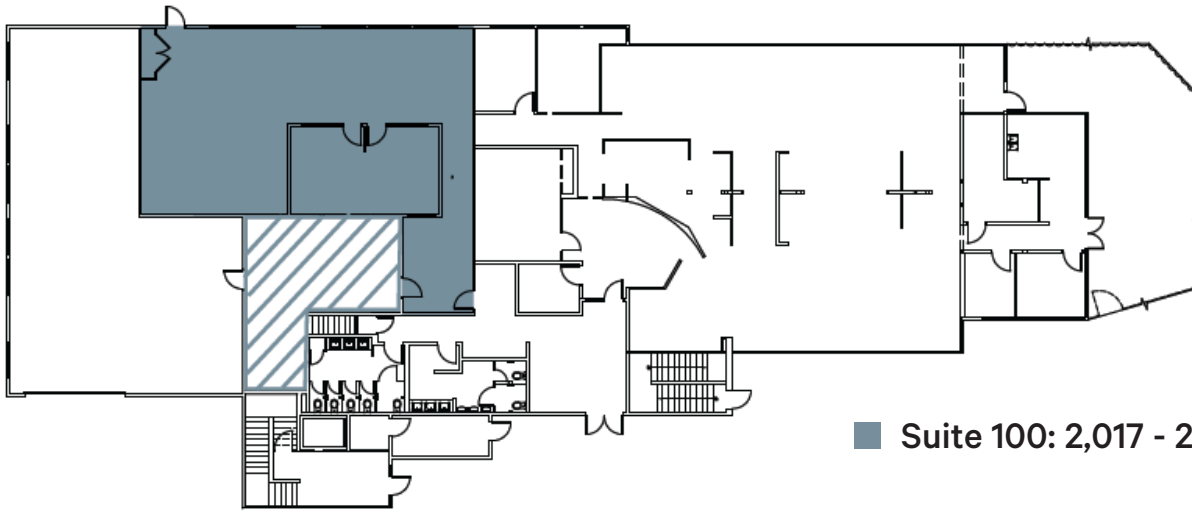
6161 NE 175th Street | Kenmore, WA 98028



## Property Features

- Rare office availability with Lake Washington views
- 3 miles from I-405 and I-5
- Ample surface parking
- Walking distance to the Burke Gilman Trail, restaurants, retail and financial institutions

# Availabilities

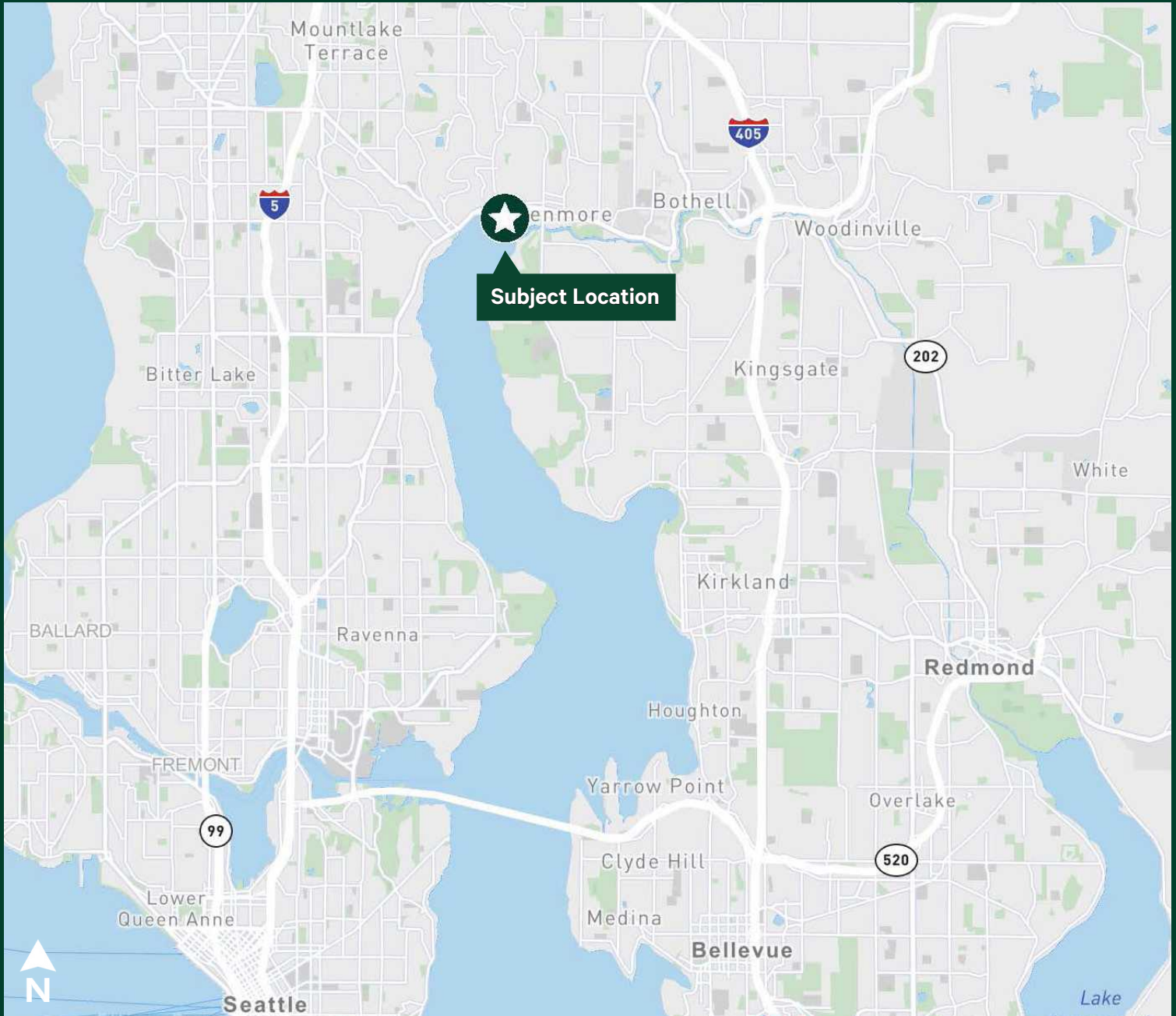


Suite Number	Size	Availability
100	2,017 - 2,652 SF	Now
205	2,385 SF	Now

# Kenmore Lake Building

6161 NE 175th Street | Kenmore, WA 98028

# For Lease



## Contact Us

### Ric Brandt

Senior Vice President  
+1 425 462 6901  
ric.brandt@cbre.com

### John Bauer

Senior Vice President  
+1 425 461 6906  
john.bauer@cbre.com

### Erik Larson

First Vice President  
+1 425 462 6954  
erik.larson@cbre.com

© 2024 CBRE, Inc. All rights reserved. This information has been obtained from sources believed reliable, but has not been verified for accuracy or completeness. You should conduct a careful, independent investigation of the property and verify all information. Any reliance on this information is solely at your own risk. CBRE and the CBRE logo are service marks of CBRE, Inc. All other marks displayed on this document are the property of their respective owners, and the use of such logos does not imply any affiliation with or endorsement of CBRE. Photos herein are the property of their respective owners. Use of these images without the express written consent of the owner is prohibited. 6-6-24 RP