



16650 WOODINVILLE REDMOND ROAD NE

# WOODINVILLE WEST

BUILDING D





# WOODINVILLE WEST

BUILDING D

**69,997 RSF**  
STAND ALONE SINGLE  
TENANT BUILDING

APPROX.  
**3,000 AMPS**  
POWER

**15** DOCK HIGH  
DOORS      **4** GRADE  
LEVEL DOORS

**CROSS DOCK LOADING**

---



# WOODINVILLE WEST

BUILDING D - 16650 WOODINVILLE REDMOND ROAD NE



## FACT SHEET

---

### BUILDING SIZE

69,997 RSF

---

### PARKING

Approx. 2/1,000

---

### CEILING HEIGHT

Approx. 24' - 26'

---

### LOADING

Cross dock loading with 15 dock high doors & 4 grade level doors

---

### ELECTRICAL

3,000 amp 480V/277V service 3Ø. Transformer rated 1,500 KVA.

---

### SPRINKLERS

ESFR Wet System – 12 heads @ 78.8 PSI for 30SF 1854 GPM

---



**TYLER SLONE** | 425.274.4281 | slone@broderickgroup.com  
**ERIC MEUSSNER** | 425.274.4282 | meussner@broderickgroup.com

*The information contained herein has been given to us by the owner or sources that we deem reliable. We have no reason to doubt its accuracy, but we do not guarantee it. Prospective tenants should carefully verify all information contained herein.*



# WOODINVILLE WEST

BUILDING D - 16650 WOODINVILLE REDMOND ROAD NE



## FIRST FLOOR

## SECOND FLOOR

### SPACE DETAILS

69,997 RSF Building

Approx 16,861 SF contiguous office

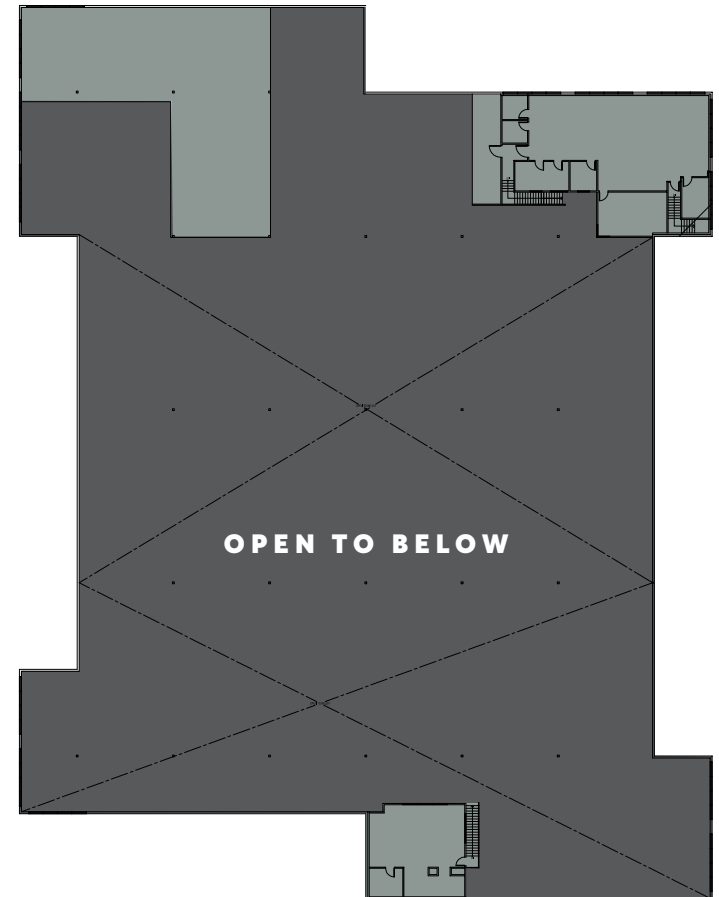
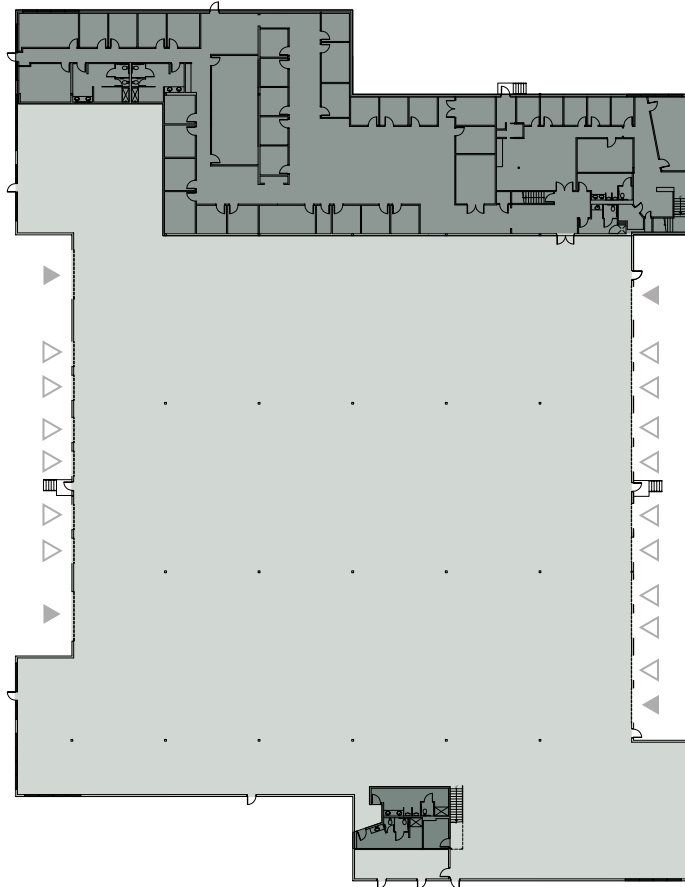
Cross Dock Loading

15 Dock High Doors

4 Grade Level Loading

3,000 amp 480V/277V service 3Ø  
Transformer rated 1,500 KVA

Approx. 24'-26' Clear Height



- OFFICE
- WAREHOUSE / MANUFACTURING
- GRADE-LEVEL LOADING
- DOCK HIGH LOADING



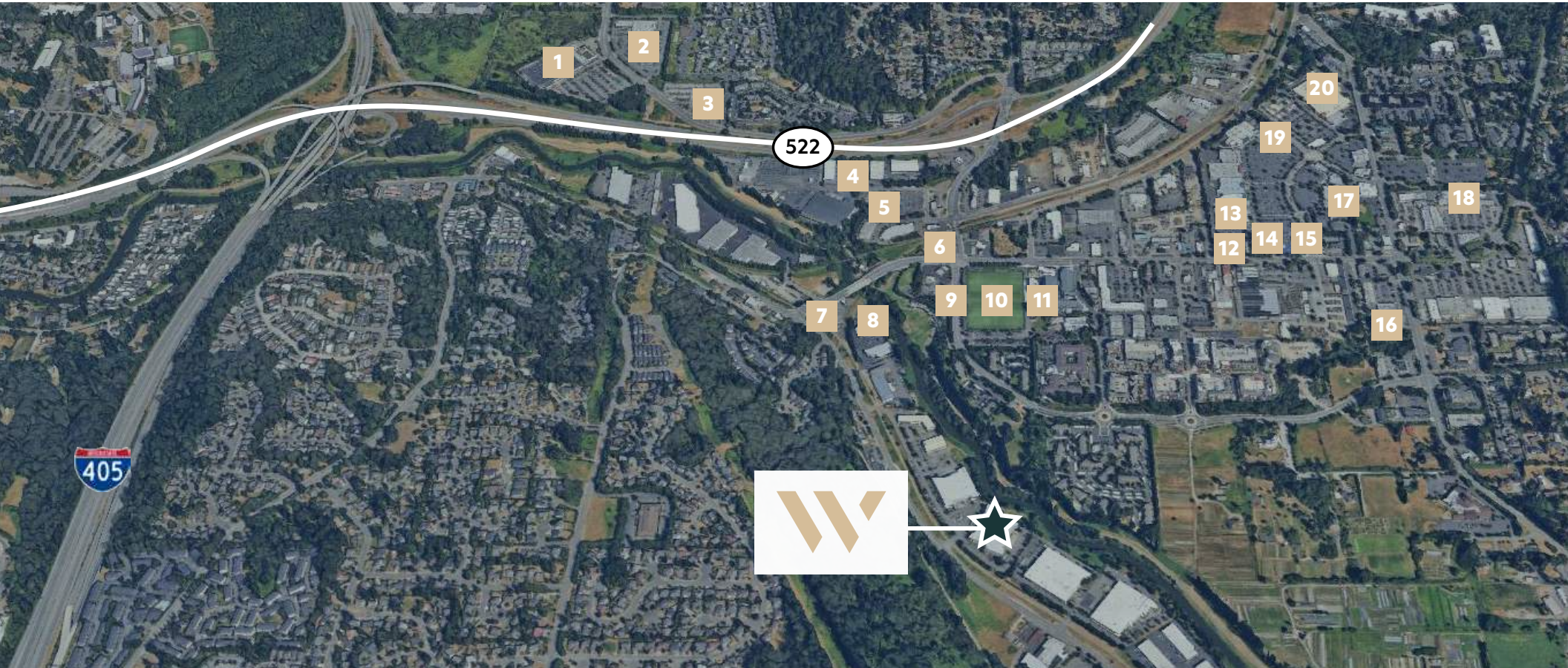
**TYLER SLONE** | 425.274.4281 | slone@broderickgroup.com  
**ERIC MEUSSNER** | 425.274.4282 | meussner@broderickgroup.com

*The information contained herein has been given to us by the owner or sources that we deem reliable. We have no reason to doubt its accuracy, but we do not guarantee it. Prospective tenants should carefully verify all information contained herein.*



# WOODINVILLE WEST

BUILDING D - 16650 WOODINVILLE REDMOND ROAD NE



- 1 The Home Depot
- 2 Starbucks
- 3 24 Hour Fitness
- 4 Crucible Brewing
- 5 US Post Office

- 6 McLendon's Hardware
- 7 Cut Shop Restaurant
- 8 Mercury Coffee Shop
- 9 Jack in the Box
- 10 Woodinville Play Fields

- 11 The Schoolhouse District
- 12 FedEx Shipping Center
- 13 Haggen Food & Pharmacy
- 14 Panera Bread
- 15 Chipotle

- 16 McDonalds
- 17 AMC Theatres Woodinville
- 18 Woodinville Park & Ride
- 19 Red Robin Gourmet Burgers
- 20 Target



**TYLER SLONE** | 425.274.4281 | slone@broderickgroup.com  
**ERIC MEUSSNER** | 425.274.4282 | meussner@broderickgroup.com

*The information contained herein has been given to us by the owner or sources that we deem reliable. We have no reason to doubt its accuracy, but we do not guarantee it. Prospective tenants should carefully verify all information contained herein.*