

# 246,500 SF

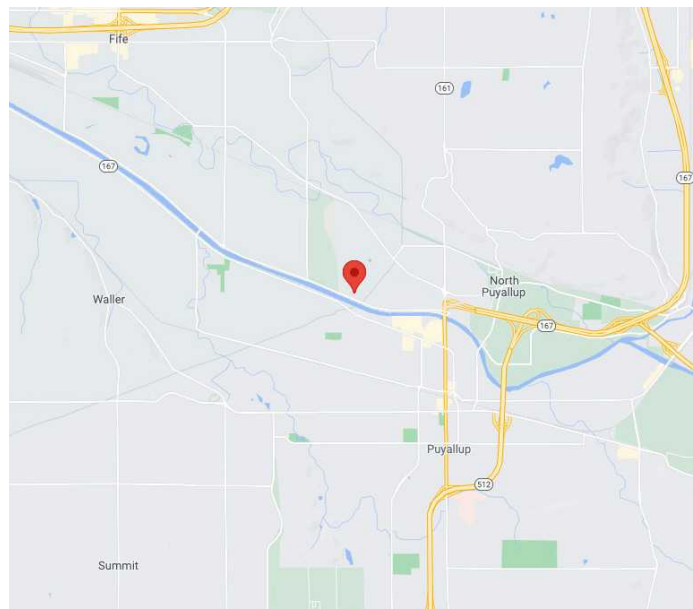
Industrial Space For Lease



## Prologis Park Puyallup 1



1601 Industrial Park Way  
Puyallup, WA 98371



### LOCATION

- Excellent access to Port of Tacoma, I-5 and Hwy-167
- In-park truck flow is excellent

### SUITE 100

- ±246,500 SF (Divisible to 114,000 SF)
- ±14,780 SF Office
- 59 DH doors; 2 GL doors
- Concrete truck apron
- 30' clear height
- 50' x 50' column spacing
- ESFR sprinkler system
- Ample employee car parks
- LED lighting
- Trailer Parking (36)
- 5,000 amps of 277/480
- Comcast fiber optic network
- Call for lease rate
- Available immediately

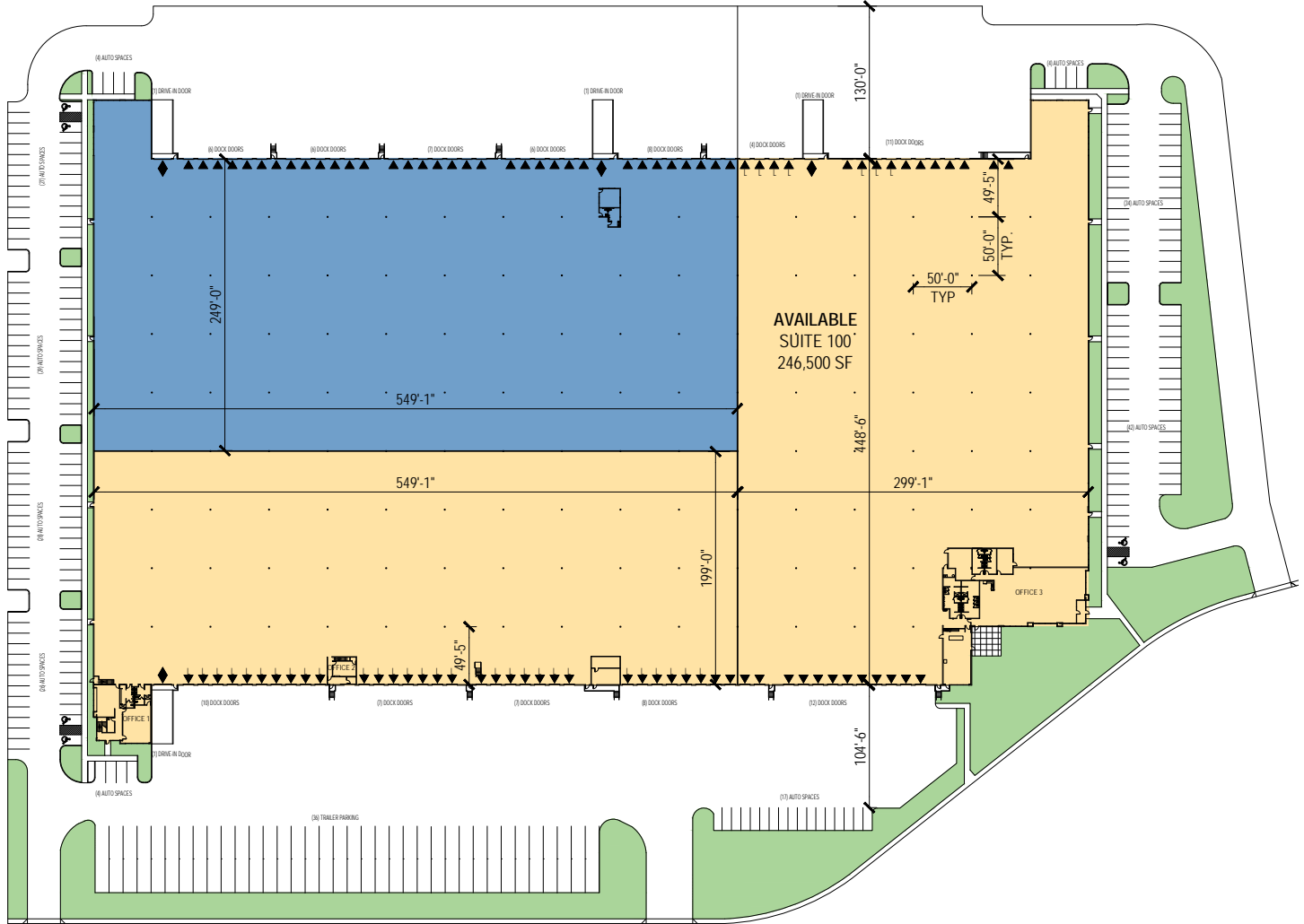
**Prologis Essentials: your single-source service for efficient move-in and operations at [prologisessentials.com](https://www.prologisessentials.com)**

# 246,500 SF

Industrial Space For Lease



## Prologis Park Puyallup 1



### Neil Walter Company

Scott Price  
sprice@neilwalter.com  
253 779 2419  
1940 East D St, Suite 100  
Tacoma, WA 98421

### Neil Walter Company

Bruce Valentine  
bvalentine@neilwalter.com  
253 779 2400  
1940 East D St, Suite 100  
Tacoma, WA 98421

### KBC Advisors

Michael Roy  
michael.roy@kbcadvisors.com  
206 940 7199  
5628 Airport Way S #238  
Seattle, WA 98108

**Prologis Essentials: your single-source service for efficient move-in and operations at [prologisessentials.com](https://www.prologisessentials.com)**

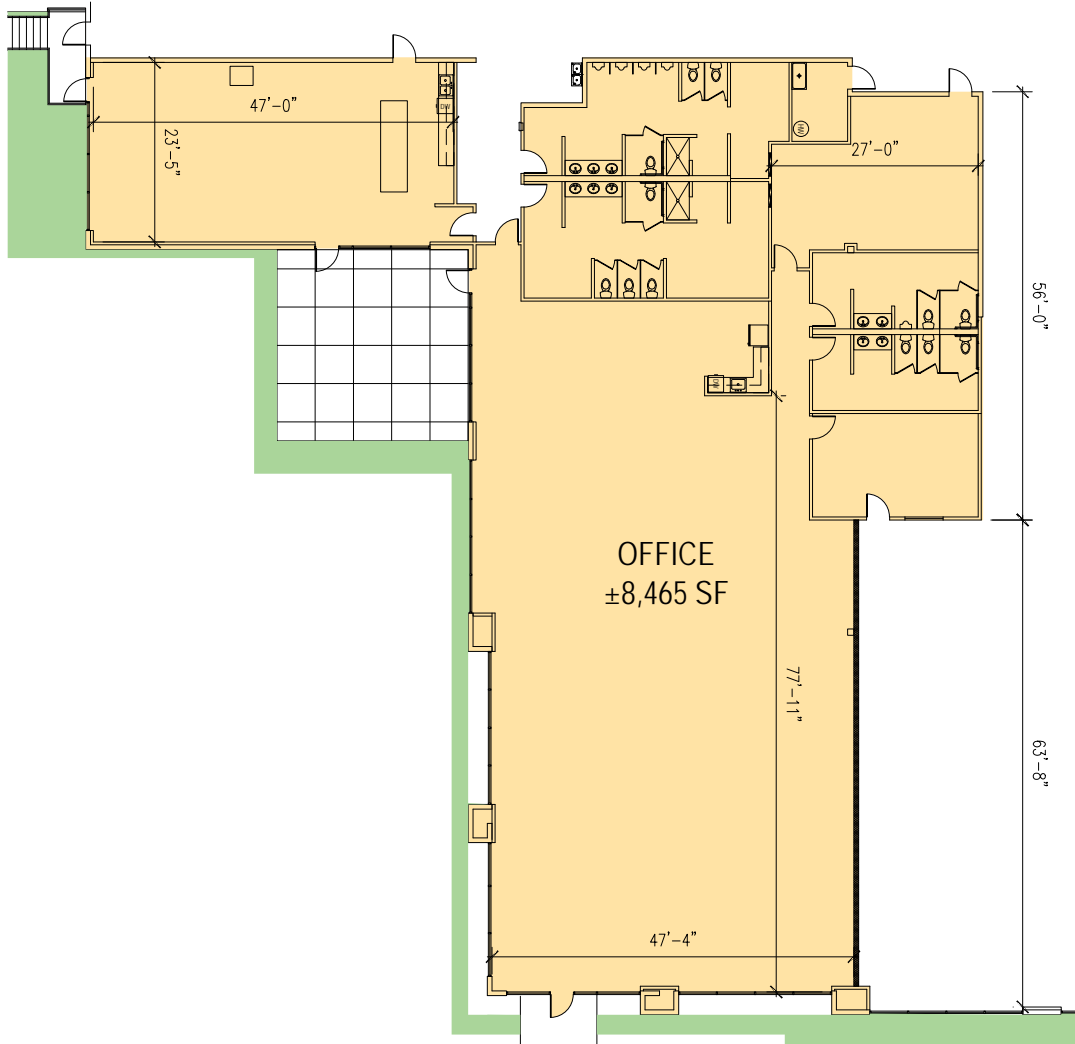
No warranty or representation, expressed or implied, is made as to the accuracy of the information contained herein, and same is submitted subject to error and omissions.

# 246,500 SF

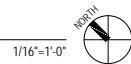
Industrial Space For Lease



## Prologis Park Puyallup 1



SUITE 100 OFFICE PLAN



**Neil Walter Company**

Scott Price  
sprice@neilwalter.com  
253 779 2419  
1940 East D St, Suite 100  
Tacoma, WA 98421

**Neil Walter Company**

Bruce Valentine  
bvalentine@neilwalter.com  
253 779 2400  
1940 East D St, Suite 100  
Tacoma, WA 98421

**KBC Advisors**

Michael Roy  
michael.roy@kbcadvisors.com  
206 940 7199  
5628 Airport Way S #238  
Seattle, WA 98108