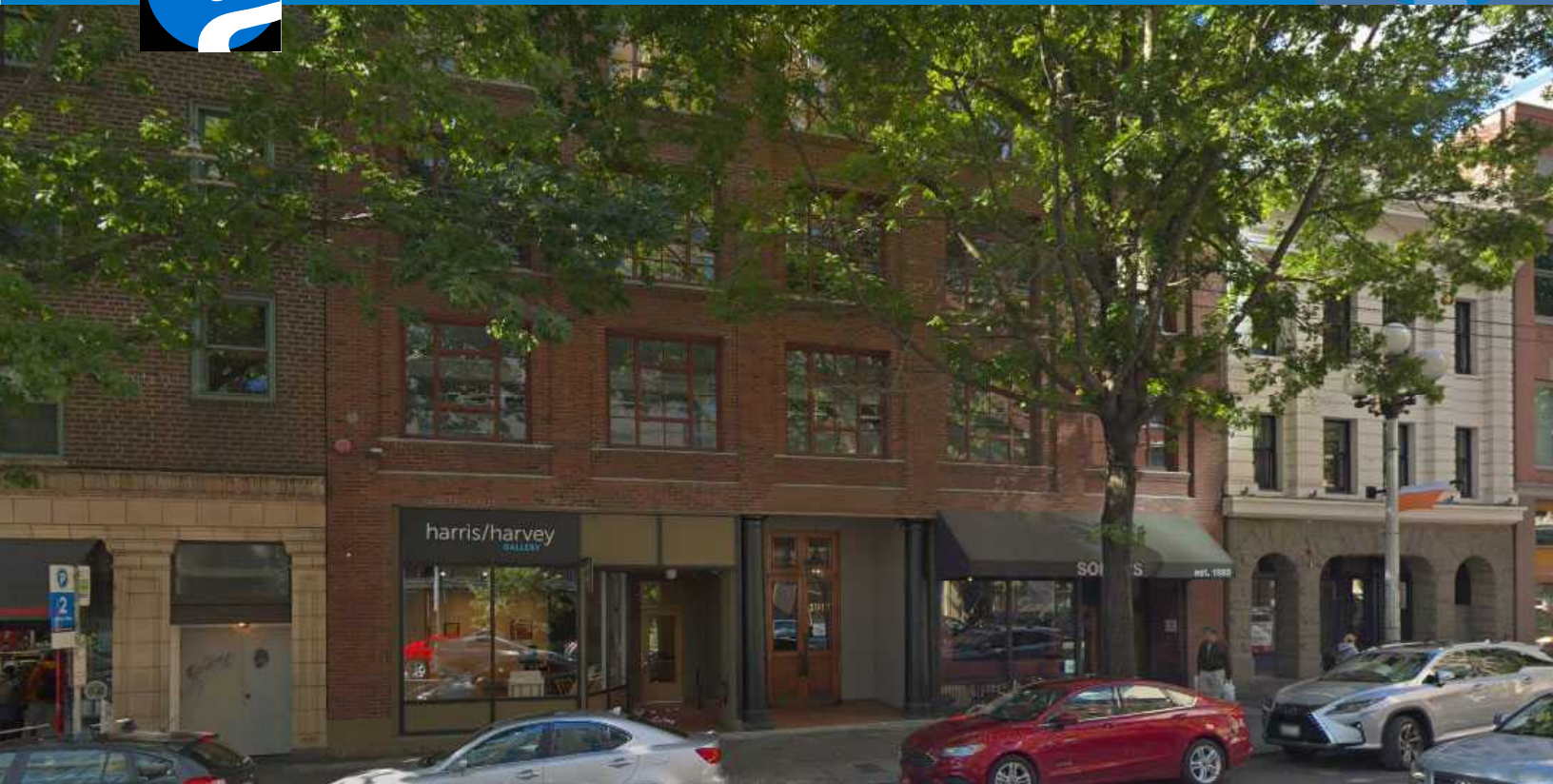




# ALASKA TRADE BUILDING

1917 1ST AVENUE, SEATTLE WASHINGTON

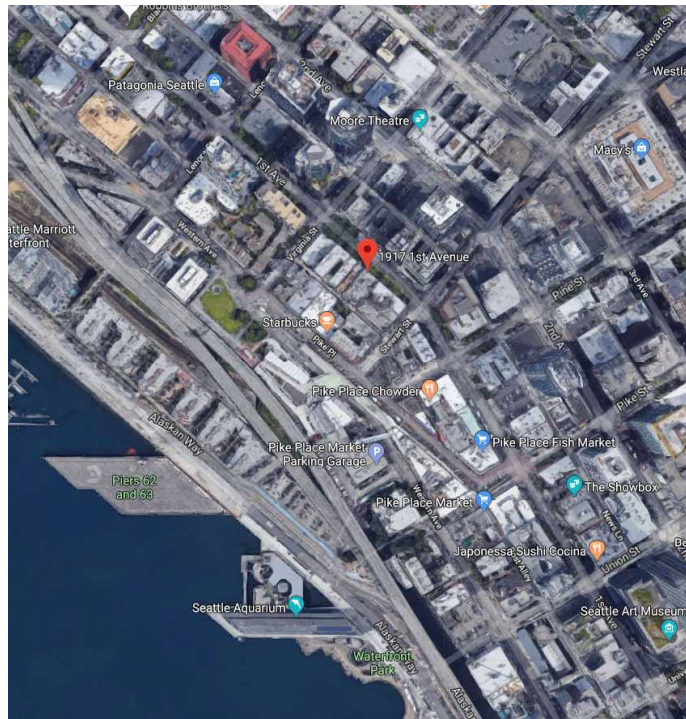


## FEATURES

- Prime Location next to Pike Place Market.
- Entire TOP FLOOR with direct elevator access into suite.
- Private rooftop area with secured access and water views.
- Open floor plan with private offices, 2 restrooms, kitchen area, and conference room.
- Very secure and controlled main entrance including security cameras and Key FOBs.
- Amazing design features- wood beams, exposed brick, large windows, etc.
- Secure bike storage and locker rooms w/shower located on A level.
- Walking distance to several amenities and restaurants

## LEASE INFORMATION

Lease Type	<i>Modified Gross</i>
Availability	<i>Available Immediately</i>
Rent	<i>\$34.00/SF</i>
Space Available	
<i>Suite 400</i>	<i>3,031 SF</i>



**JAY AZOSE**  
 425.974.4203  
 206.650.4100  
 jazose@azose.com

**MICHAEL AZOSE**  
 425.974.4236  
 206.856.7576  
 mazose@azose.com



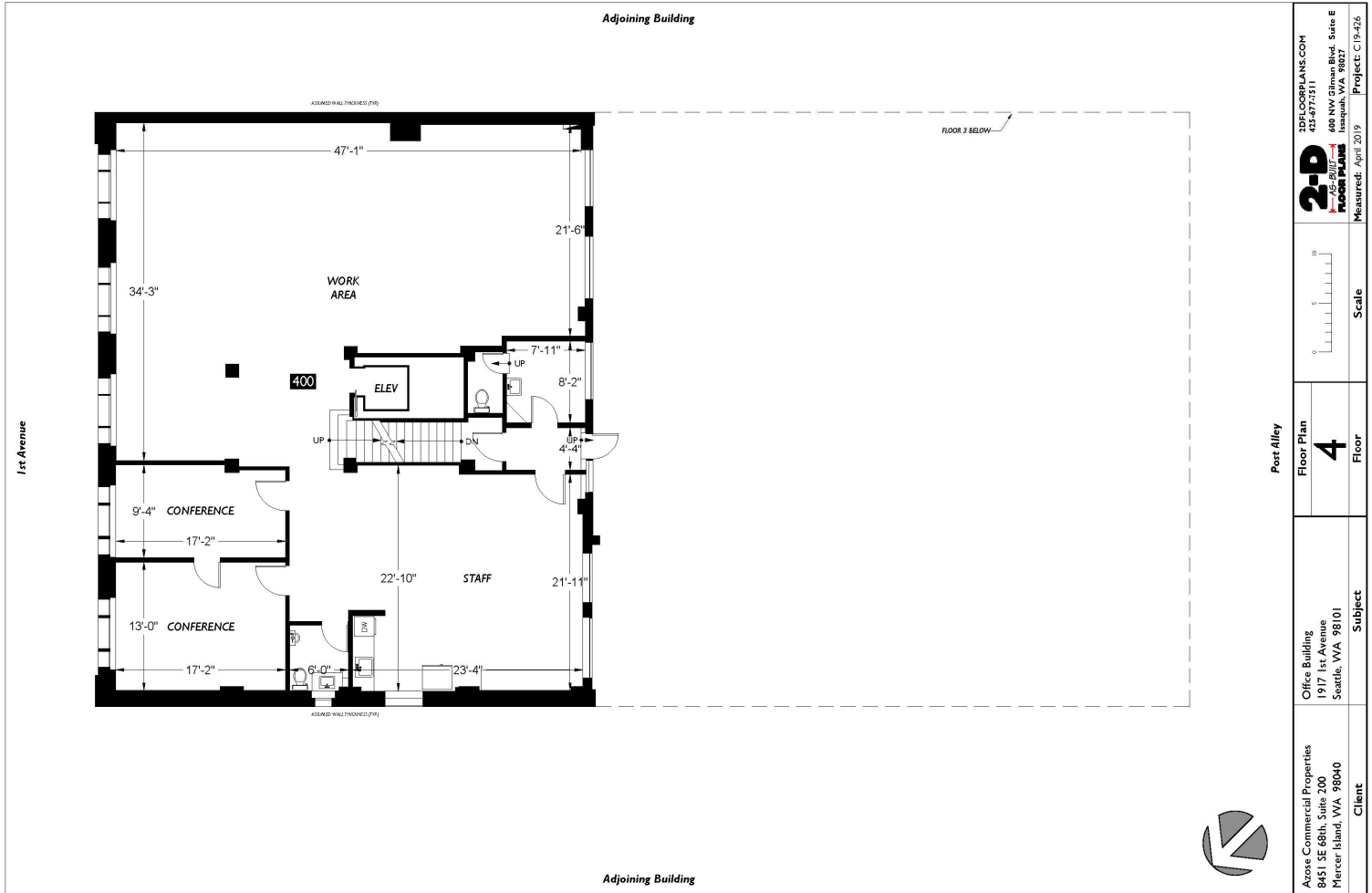
**MARK O'SHEA**  
 425.974.4201  
 425.922.5468  
 moshea@azose.com

8451 SE 68TH ST., STE 200  
 MERCER ISLAND, WA 98040  
 425.643.8400  
 WWW.AZOSE.COM



# ALASKA TRADE BUILDING

1917 1ST AVENUE, SEATTLE WASHINGTON



1ST FLOOR PLANS.COM 202-477-7371 <b>2-D</b> 2D FLOOR PLANS 600 NW 57th Ave, Suite E Seattle, WA 98107 Measured: April 2019 Project: C19-426	
Scale 0 5 10	Floor <b>4</b>
Client Azose Commercial Properties 8451 SE 68th, Suite 200 Mercer Island, WA 98040	Subject Office Building 1917 1st Avenue Seattle, WA 98101

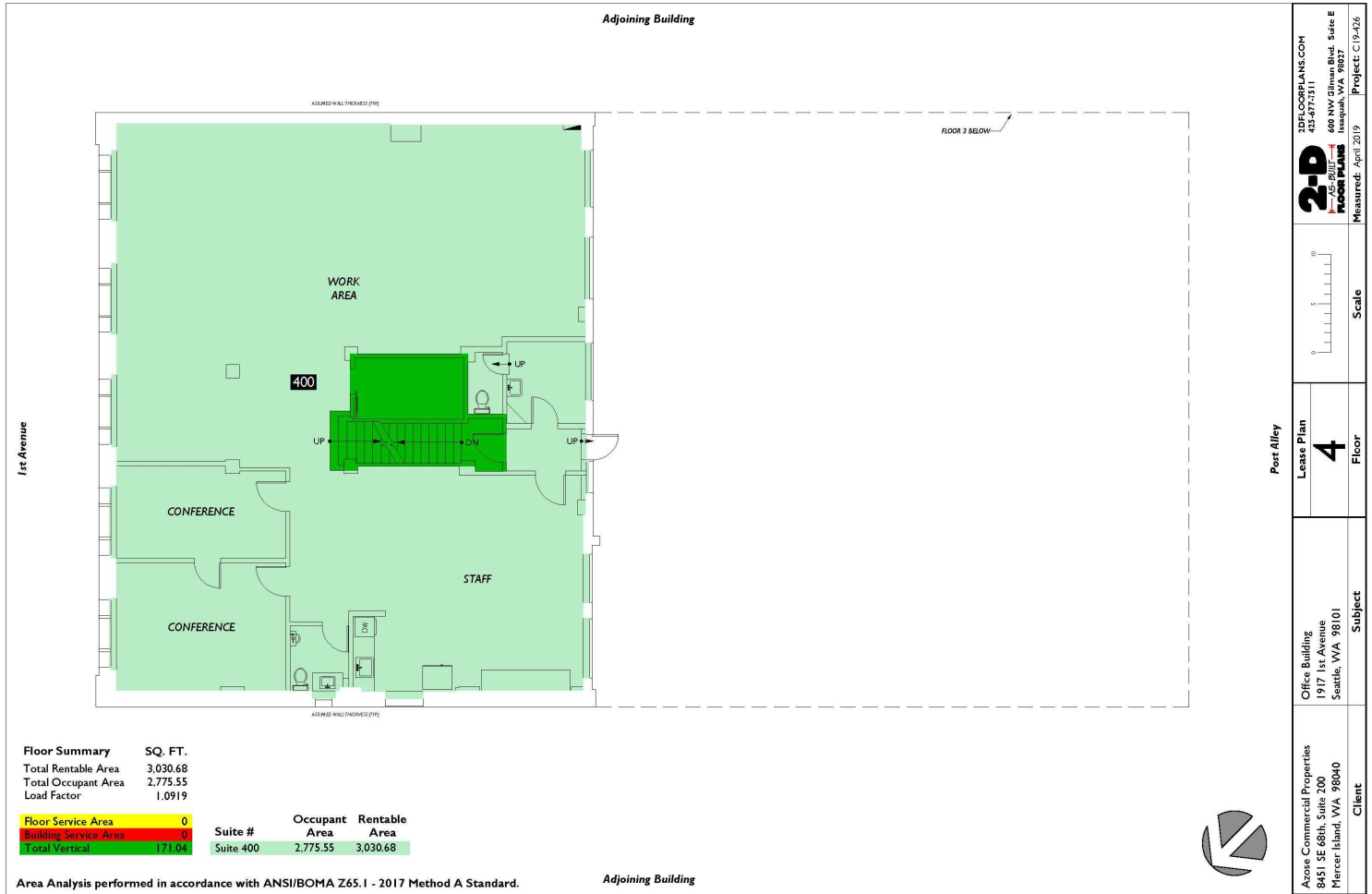
**JAY AZOSE**  
 425.974.4203  
 206.650.4100  
 jazose@azose.com

**MICHAEL AZOSE**  
 425.974.4236  
 206.856.7576  
 mazose@azose.com



**MARK O'SHEA**  
 425.974.4201  
 425.922.5468  
 moshea@azose.com

8451 SE 68TH ST., STE 200  
 MERCER ISLAND, WA 98040  
 425.643.8400  
 WWW.AZOSE.COM



**JAY AZOSE**  
425.974.4203  
206.650.4100  
jazose@azose.com

**MICHAEL AZOSE**  
425.974.4236  
206.856.7576  
mazose@azose.com



**MARK O'SHEA**  
425.974.4201  
425.922.5468  
moshea@azose.com

8451 SE 68TH ST., STE 200  
MERCER ISLAND, WA 98040  
425.643.8400  
WWW.AZOSE.COM