

# Office Space for Lease

903 & 905 E. Wellesley Ave,  
Spokane, WA, 99207

sds  
COMMERCIAL

- On-Site Parking.
- Completely remodeled.
- Great location and visibility.
- Two 600 SF Suites Available.
- Lease Rate: \$1,200.00 per month.  
Spaces can be combined.

Levi McCormick    Carlos Herrera  
W: 509.462.9306    C: 509.714.2593  
levi@sdsrealty.com    carlos@sdsrealty.com

[www.sdsrealty.com](http://www.sdsrealty.com)

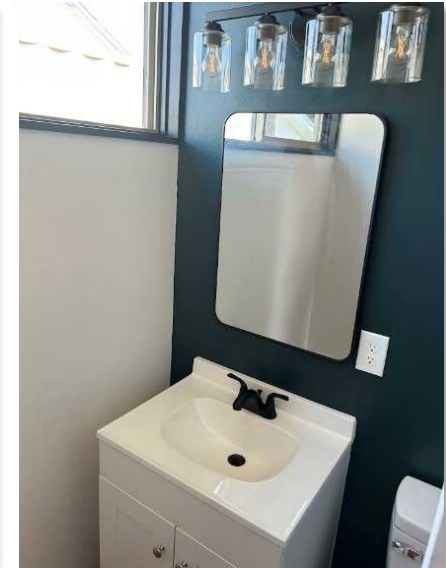
SDS REALTY INC 108 N WASHINGTON #600, SPOKANE WA. 99201

This information has been secured from sources we believe to be reliable, but we make no representations or warranties, express or implied, as to the accuracy of the information. References to square footage or age are approximate. Buyer/tenant must verify the information and bears all risks for any inaccuracies.

# OFFICE SPACE FOR LEASE

Levi McCormick  
W: 509.462.9306  
levi@sdsrealty.com

Carlos Herrera  
C: 509.714.2593  
carlos@sdsrealty.com



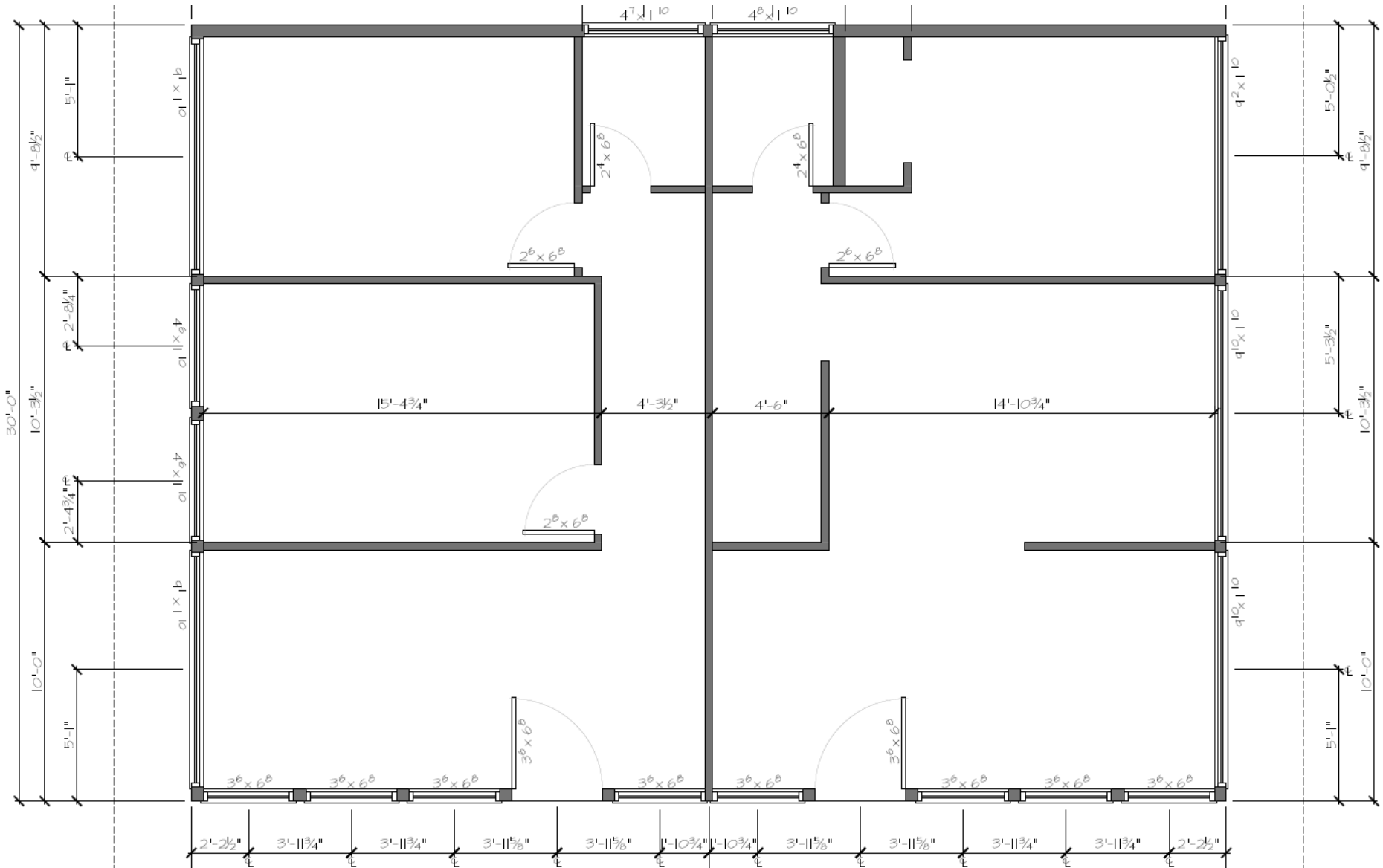
SDS REALTY INC 108 N WASHINGTON #600, SPOKANE WA. 99201

This information has been secured from sources we believe to be reliable, but we make no representations or warranties, express or implied, as to the accuracy of the information. References to square footage or age are approximate. Buyer/tenant must verify the information and bears all risks for any inaccuracies.

# OFFICE SPACE FOR LEASE

Levi McCormick  
W: 509.462.9306  
levi@sdsrealty.com

Carlos Herrera  
C: 509.714.2593  
carlos@sdsrealty.com



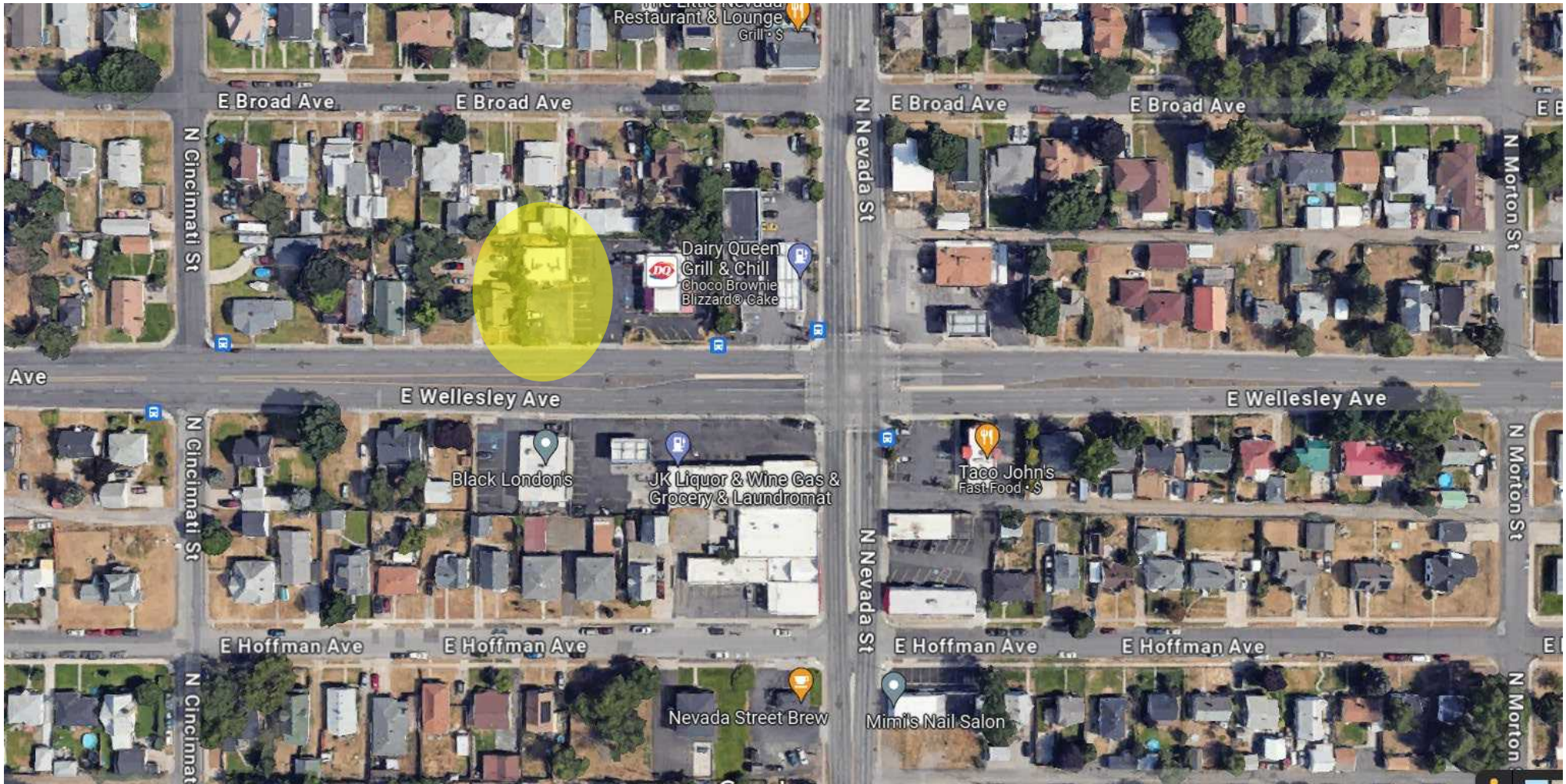
SDS REALTY INC 108 N WASHINGTON #600, SPOKANE WA. 99201

This information has been secured from sources we believe to be reliable, but we make no representations or warranties, express or implied, as to the accuracy of the information. References to square footage or age are approximate. Buyer/tenant must verify the information and bears all risks for any inaccuracies.

# OFFICE SPACE FOR LEASE

Levi McCormick  
W: 509.462.9306  
levi@sdsrealty.com

Carlos Herrera  
C: 509.714.2593  
carlos@sdsrealty.com



SDS REALTY INC 108 N WASHINGTON #600, SPOKANE WA. 99201

This information has been secured from sources we believe to be reliable, but we make no representations or warranties, express or implied, as to the accuracy of the information. References to square footage or age are approximate. Buyer/tenant must verify the information and bears all risks for any inaccuracies.