

BALLARD BOOKCASE BUILDING

4611 11TH AVE NW
BUILDING B
SEATTLE, WA

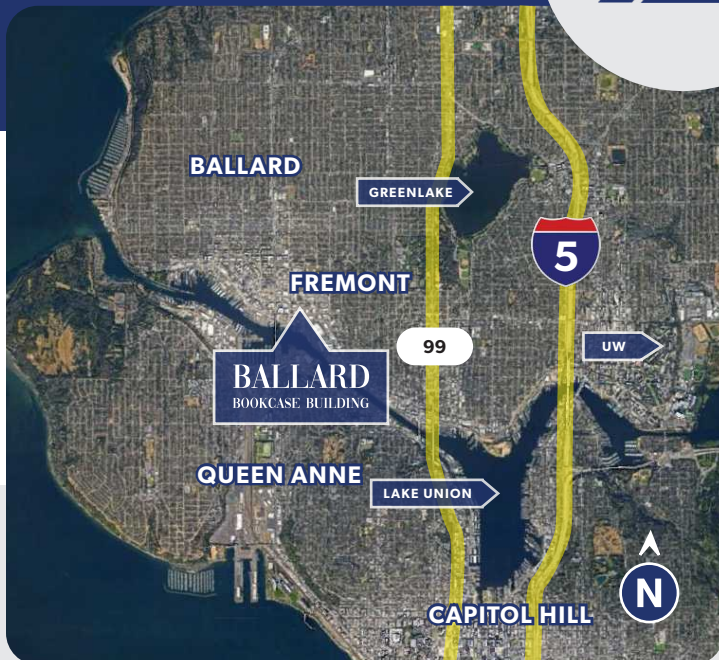
APPROX. 8,876 SF

FOR
LEASE



PROPERTY HIGHLIGHTS

- APPROX. 8,876 SF TOTAL, INCLUDING APPROX. 3,696 SF ON THE 2ND FLOOR (MOSTLY OFFICE + LIGHT STORAGE SPACE)
- FIRST FLOOR IS A MIX OF OFFICE/SHOWROOM SPACE AND WAREHOUSE AREA WITH 16' - 18' CEILING HEIGHT
- ONE OVERSIZED ROLL-UP DOOR
- 3-PHASE POWER
- CALL BROKERS FOR RATES



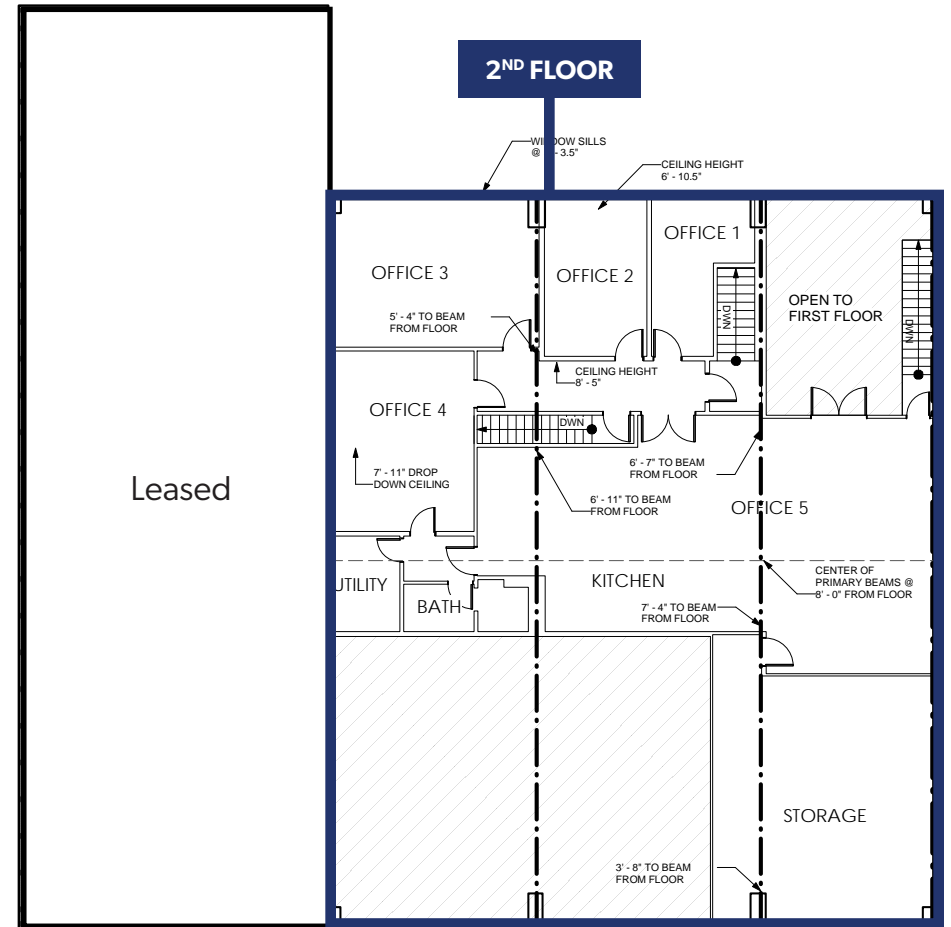
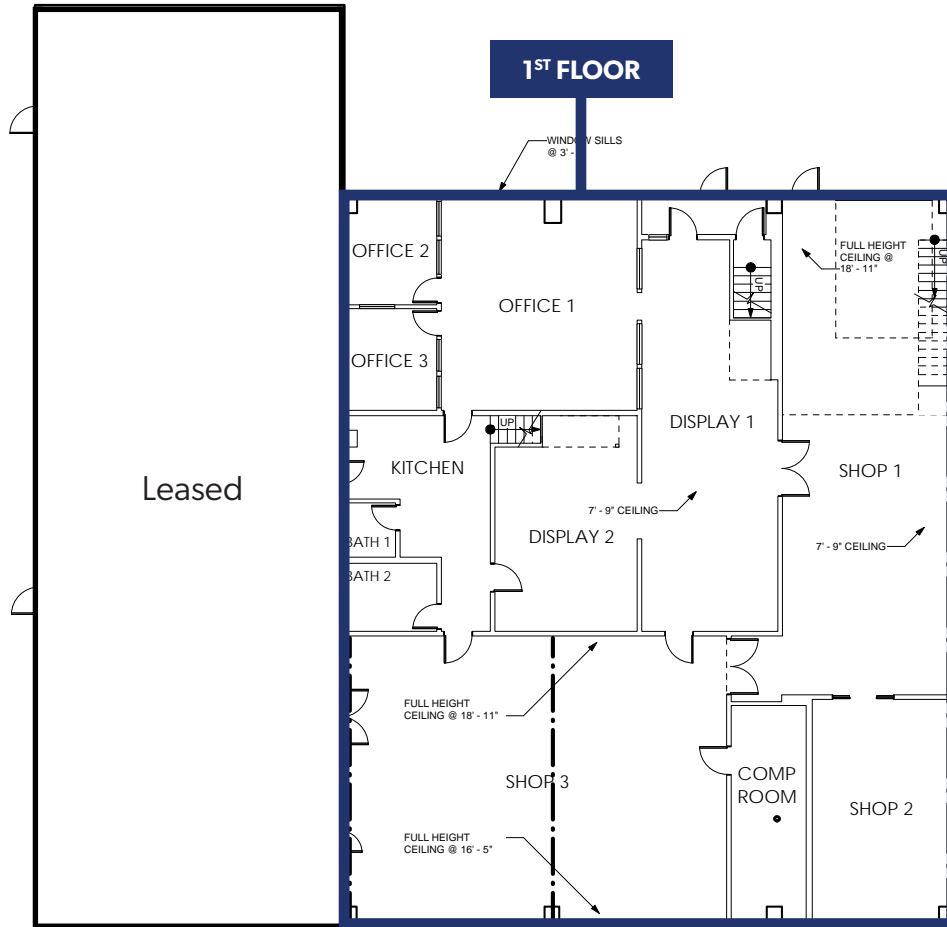
BRIAN BRUININKS, CCIM
(206) 856-6249
bbruininks@andoverco.com

SHANE MAHVI
(858) 442-0441
smahvi@andoverco.com

 **THE ANDOVER
COMPANY, INC.**
CORFAC INTERNATIONAL

8,876 SF TOTAL

OFFICE & STORAGE: 3,696 SF



The information contained herein has been obtained from reliable sources, but is not guaranteed. A prospective buyer/tenant should verify each item relating to this property and all information contained herein.

BALLARD
BOOKCASE BUILDING

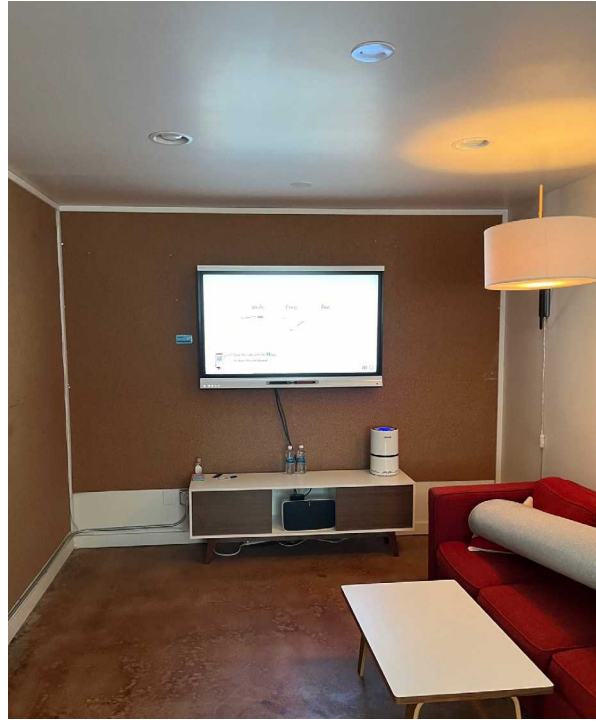
4611 11TH AVE NW
BUILDING B
SEATTLE, WA

BRIAN BRUININKS, CCIM
(206) 856-6249
bbruininks@andoverco.com

SHANE MAHVI
(858) 442-0441
smahvi@andoverco.com

**THE ANDOVER
COMPANY, INC.**
CORFAC INTERNATIONAL

PHOTOS



BALLARD
BOOKCASE BUILDING

4611 11TH AVE NW
BUILDING B
SEATTLE, WA

BRIAN BRUININKS, CCIM
(206) 856-6249
bbruininks@andoverco.com

SHANE MAHVI
(858) 442-0441
smahvi@andoverco.com

**THE ANDOVER
COMPANY, INC.**
CORFAC INTERNATIONAL