



SPACE FOR LEASE

GARDEN COURT OFFICE SUITES

Total Building Size: ±17,300 SF

Available Space: ±552 SF up to ±3,930 SF

Lease Rate: \$16.00 PSF, *Full Service including Janitorial*

- Building Conference Room
- Building Breakroom
- Free Parking (4/1,000)

AVAILABLE SPACE

SUITE #	SPACE SIZE	MONTHLY RENT	AVAILABILITY
30	±2,093 RSF	\$2,791 / Month	NOW
40	±1,173 RSF	\$1,564 / Month	NOW
134	±868 RSF	\$1,157 / Month	10.01.2024
210	±3,930 RSF	\$5,240 / Month	NOW
224	±1,448 RSF	\$1,931 / Month	NOW
235	±1,753 RSF	\$2,337 / Month	NOW



Office space leased here helps support Hutton Settlement Children's Home, a historic not-for-profit organization dedicated to providing a safe and loving home for children.

www.huttonsettlement.org

KIEMLEHAGOOD.COM

GARDEN COURT BUILDING

222 W. Mission Avenue
Spokane, WA, 99201

[View
Location](#)

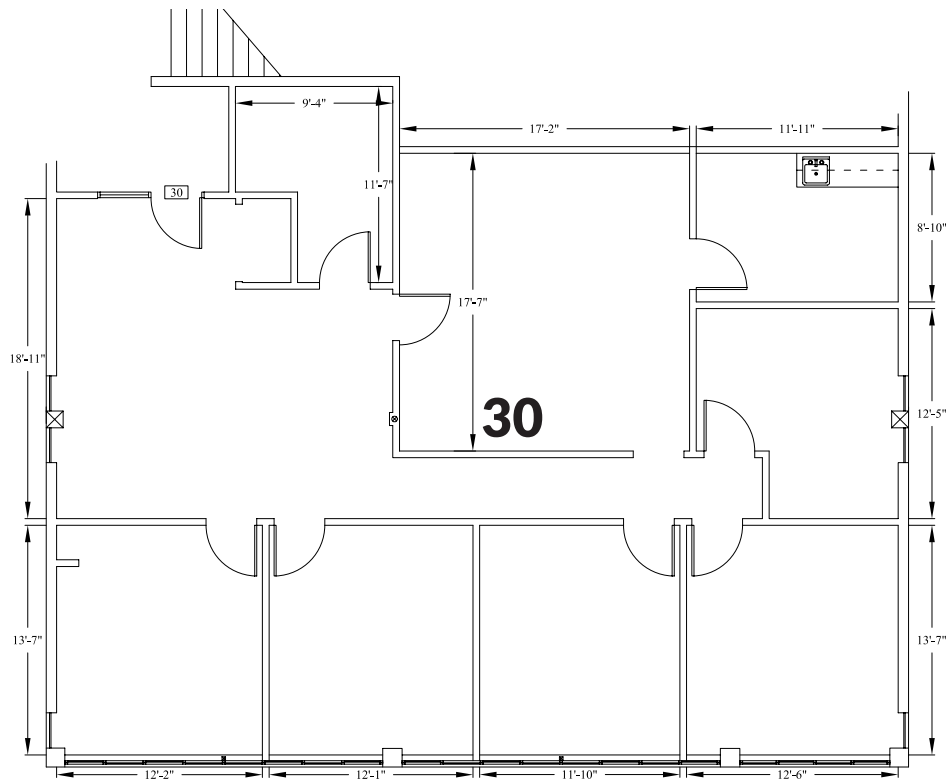


CRAIG SOEHREN, BROKER
509.775.7548
craigs@kiemleahagood.com

TONY KING, PROPERTY MANAGER
509.755.7517
tony.king@kiemleahagood.com

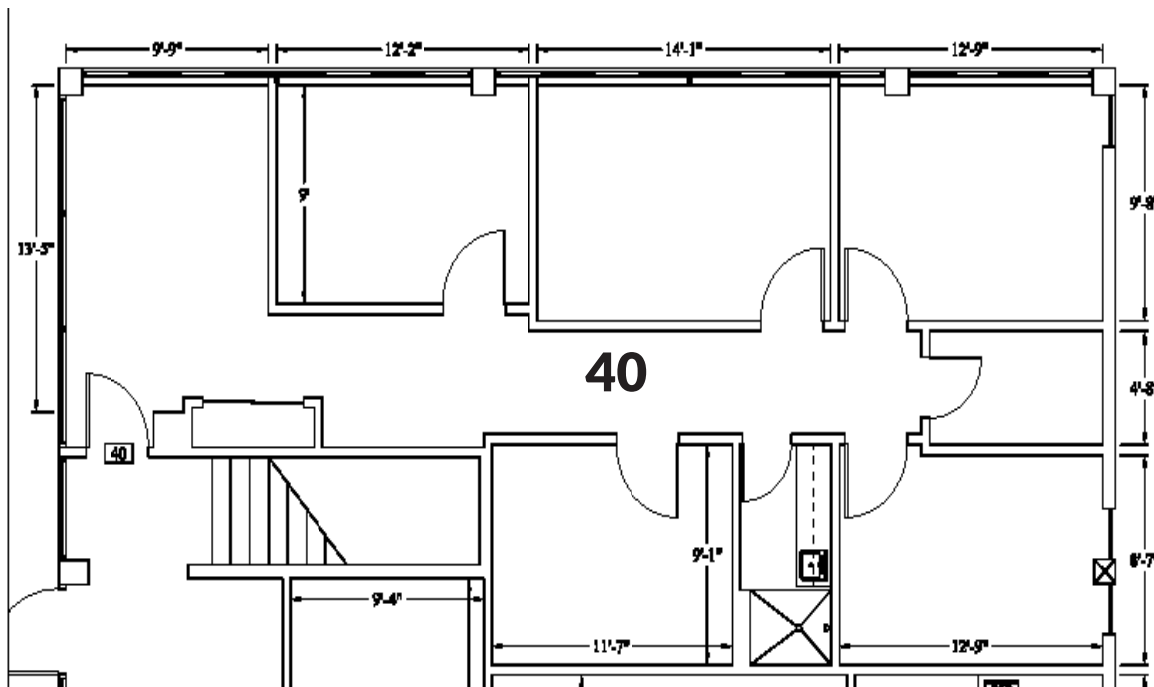
**KIEMLE
HAGOOD**

FLOOR PLANS



SUITE 30

Price:
\$2,791 / Month
Space Size:
±2,093 SF
AVAILABLE NOW



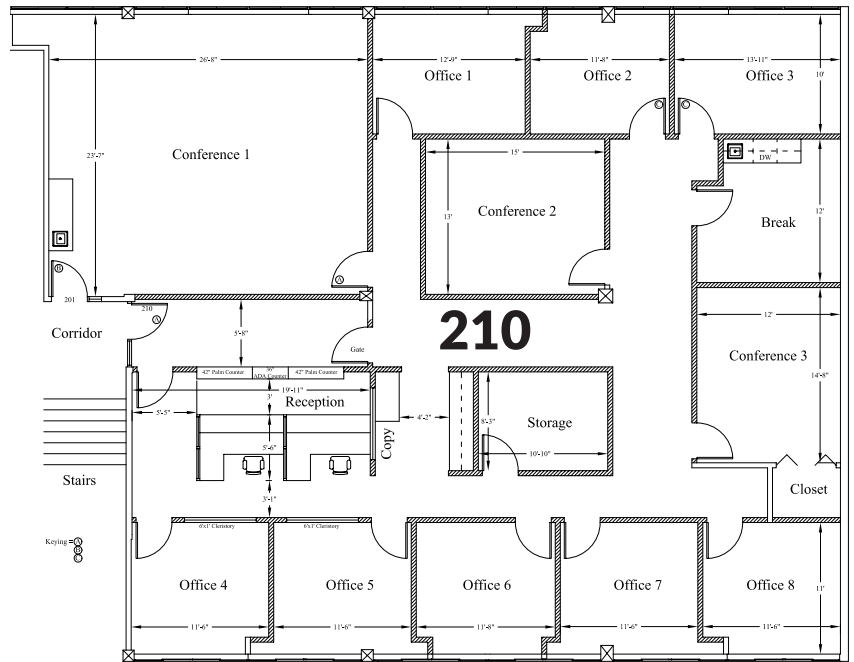
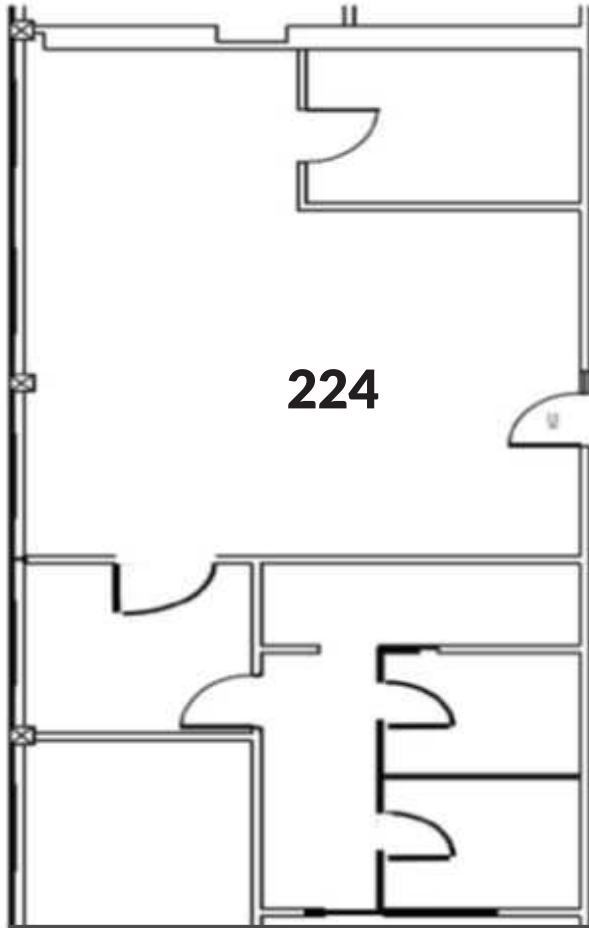
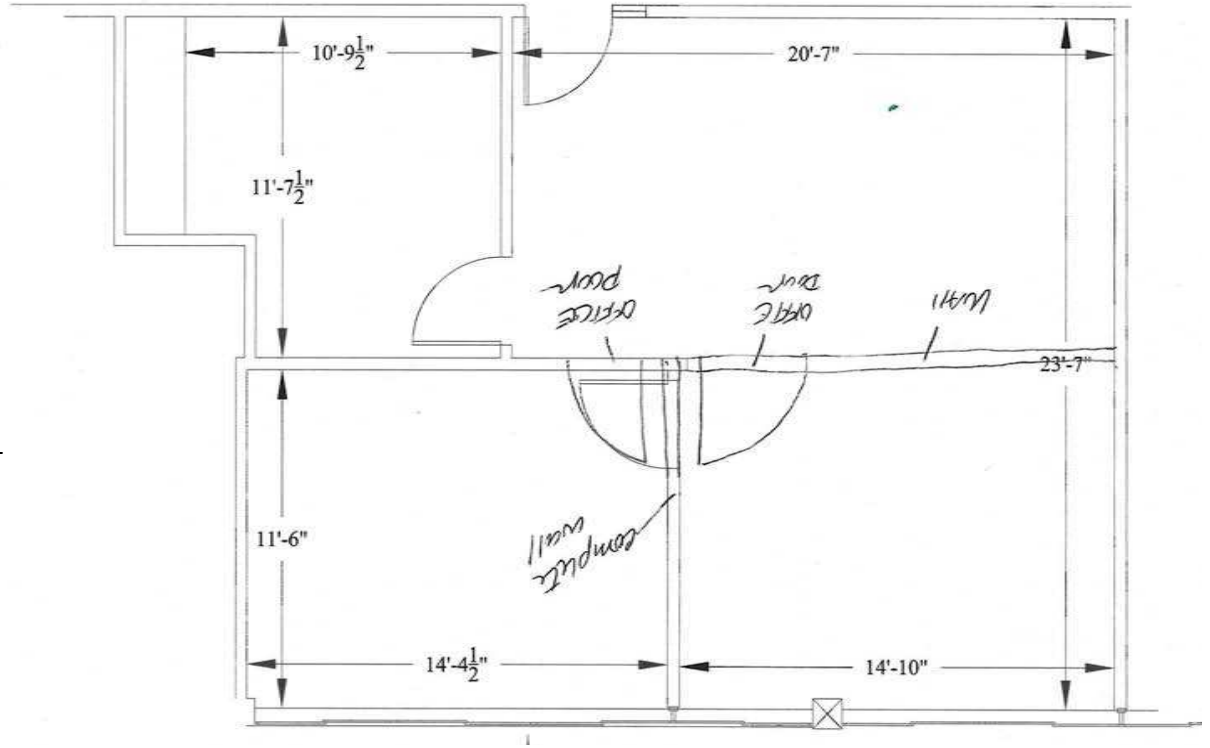
SUITE 40

Price:
\$1,564 / Month
Space Size:
±1,173 SF
AVAILABLE NOW

FLOOR PLANS

SUITE 134

Price:
\$1,157 / Month
Space Size:
±868 SF
AVAILABLE 10.01.2024

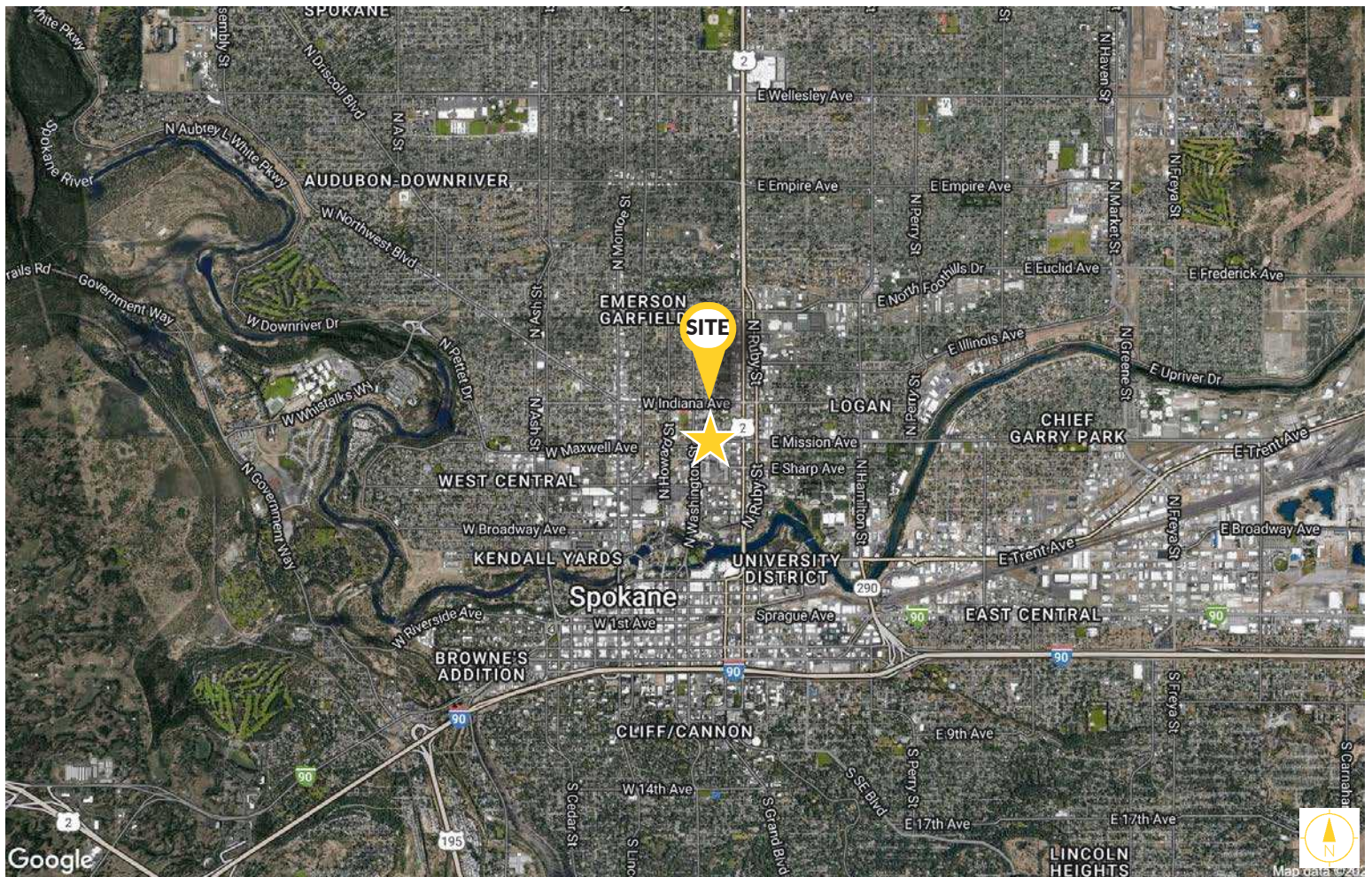


SUITE 224

Price:
\$1,931 / Month
Space Size:
± 1,448 SF
AVAILABLE NOW

SUITE 210

Price:
\$5,240 / Month
Space Size:
±3,930 SF
AVAILABLE NOW



GARDEN COURT BUILDING

222 W Mission Avenue
Spokane, WA 99201

CRAIG SOEHRN, BROKER

509.775.7548 craigs@kiemlehagood.com

TONY KING, PROPERTY MANAGER

509.755.7517 tony.king@kiemlehagood.com

601 WEST MAIN AVENUE, SUITE 400
SPOKANE, WA 99201



OFFICE LOCATIONS

SPOKANE | COEUR D'ALENE | TRI-CITIES | PALOUSE | MISSOULA

No warranty or representation, expressed or implied, is made by Kiemle Hagood, its agents or its employees as to the accuracy of the information contained herein. All information furnished is from sources deemed reliable and submitted subject to errors, omissions, change of terms and conditions, prior sale, lease or financing, or withdrawal without notice. No one should rely solely on the above information, but instead should conduct their own investigation to independently satisfy themselves.

Kiemle Hagood respects the intellectual property of others:

If you believe the copyright in your work has been violated through this Website, please contact our office for notice of claims of copyright infringement. For your complaint to be valid under the Digital Millennium Copyright Act of 1998 (DMCA), you must provide the following information when providing notice of the claimed copyright infringement: Identify the material on the Website that you believe infringes your work, with enough detail so that we may locate it on the Website; provide your address, telephone number and email address; provide a statement that you have a good faith belief that the disputed use is not authorized by the copyright owner, its agent, or the law; provide a statement that the information in the notification is accurate, and under penalty of perjury, that the complaining party is authorized to act on behalf of the owner of an exclusive right that is allegedly infringed; and provide your physical or electronic signature. Upon receiving your complaint, Kiemle Hagood will, upon review, remove content that you believe infringes your copyright if the complaint is found to be valid.

