

For Lease

**+/- 1,370 - 1,514 RSF**  
**Office**



## Meeker's Landing

615 East Pioneer, Puyallup, WA 98372

- **Suite 211: 1,514 RSF**
- **Suite 110: 1,370 RSF**
- **Suite 113: 1,387 RSF**
- Elevator, ADA accessible, tenant sign pylon
- Over 400' of frontage on East Pioneer
- Close access to Highway 167 & 512
- Near Downtown Puyallup, Good Samaritan Hospital and Pierce College
- Lease rate: \$24.00 - \$25.00 PSF, NNN

For more information:

**Kim Marvik**

+1 253 203 1325 • [kmarvik@nai-psp.com](mailto:kmarvik@nai-psp.com)



BELLEVUE | SEATTLE | TACOMA

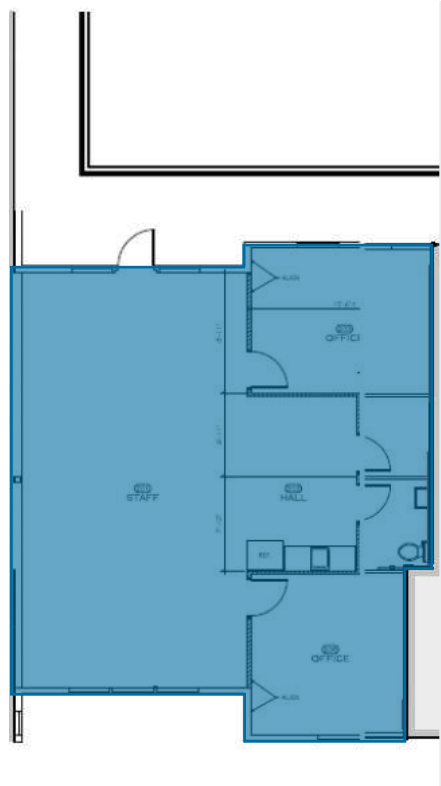
THE INFORMATION CONTAINED HEREIN HAS BEEN GIVEN TO US BY THE OWNER OF THE PROPERTY OR OTHER SOURCES WE DEEM RELIABLE, WE HAVE NO REASON TO DOUBT ITS ACCURACY, BUT WE DO NOT GUARANTEE IT. ALL INFORMATION SHOULD BE VERIFIED PRIOR TO PURCHASE OR LEASE.

914 A Street, Suite 200  
Tacoma, WA 98402  
+1 253 383 3100  
[nai-psp.com](http://nai-psp.com)

+/- 1,370 - 1,514 RSF

# Meeker's Landing

**SUITE 211  
AS-BUILT**



Second Level

Suite #

Availability

Rentable Area

Suite #	Availability	Rentable Area
Suite 211	NOW	1,511 RSF



BELLEVUE | TACOMA

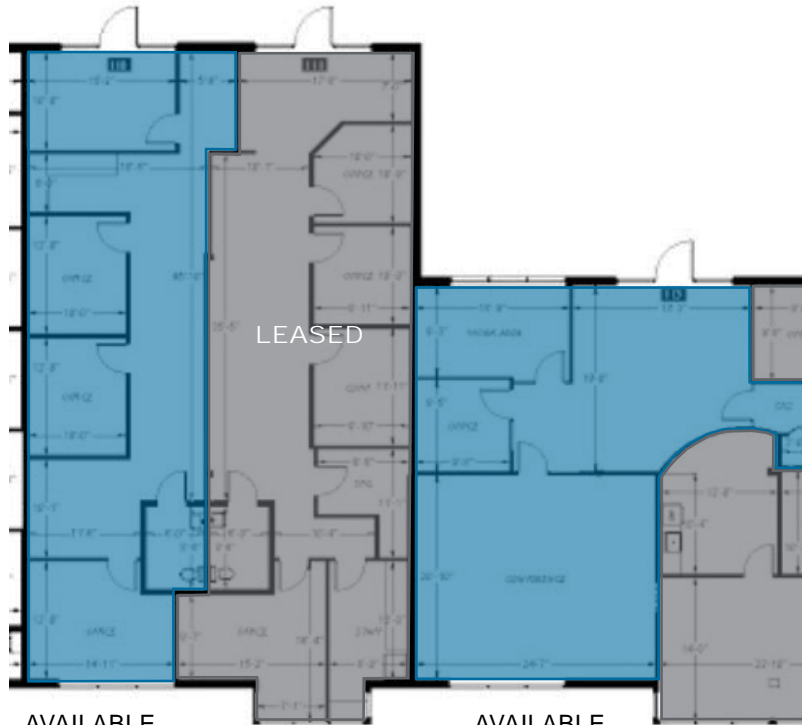
914 A Street, Suite 200  
Tacoma, WA 98402  
+1 253 383 3100  
[nai-psp.com](http://nai-psp.com)

THE INFORMATION CONTAINED HEREIN HAS BEEN GIVEN TO US BY THE OWNER OF THE PROPERTY OR OTHER SOURCES WE DEEM RELIABLE, WE HAVE NO REASON TO DOUBT ITS ACCURACY, BUT WE DO NOT GUARANTEE IT. ALL INFORMATION SHOULD BE VERIFIED PRIOR TO PURCHASE OR LEASE.

+/- 1,370 - 1,514 RSF

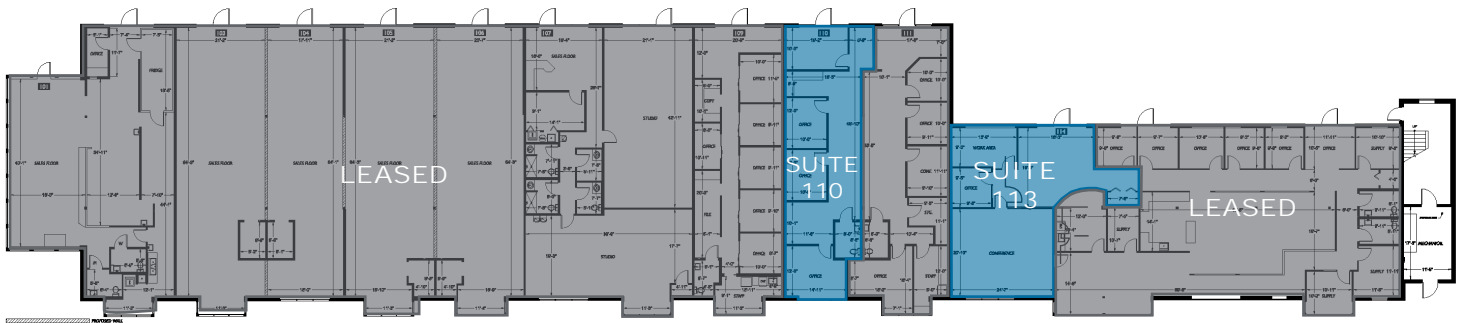
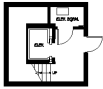
# Meeker's Landing

**AS-BUILT**



AVAILABLE SUITE 110  
1,370 RSF

AVAILABLE SUITE 113  
1,387 RSF



Main Level

Suite #	Availability	Rentable Area
Suite 110	October 1, 2024	1,370 RSF
Suite 113	October 1, 2024	1,387 RSF



BELLEVUE | TACOMA

914 A Street, Suite 200  
Tacoma, WA 98402  
+1 253 383 3100  
[nai-psp.com](http://nai-psp.com)

THE INFORMATION CONTAINED HEREIN HAS BEEN GIVEN TO US BY THE OWNER OF THE PROPERTY OR OTHER SOURCES WE DEEM RELIABLE, WE HAVE NO REASON TO DOUBT ITS ACCURACY, BUT WE DO NOT GUARANTEE IT. ALL INFORMATION SHOULD BE VERIFIED PRIOR TO PURCHASE OR LEASE.

+/- 1,370 - 1,514 RSF

# Meeker's Landing



### Demographics

	2 mile	5 miles	10 miles
TOTAL POPULATION	36,565	165,083	735,303
AVERAGE HH INCOME	\$92,458	\$104,735	\$95,869

### Traffic Counts

E Main Ave & 8th St SE	15,945 VPD
Pioneer Way E & 7th St SE	14,226 VPD
Pioneer Way E & 5th St SE	10,433 VPD
E Main Ave & 5th St SE	14,991 VPD



BELLEVUE | TACOMA

914 A Street, Suite 200  
Tacoma, WA 98402  
+1 253 383 3100

[nai-psp.com](http://nai-psp.com)

THE INFORMATION CONTAINED HEREIN HAS BEEN GIVEN TO US BY THE OWNER OF THE PROPERTY OR OTHER SOURCES WE DEEM RELIABLE, WE HAVE NO REASON TO DOUBT ITS ACCURACY, BUT WE DO NOT GUARANTEE IT. ALL INFORMATION SHOULD BE VERIFIED PRIOR TO PURCHASE OR LEASE.