

For Lease

+/- 1,370 - 1,514 RSF
Office



Meeker's Landing

615 East Pioneer, Puyallup, WA 98372

- **Suite 211: 1,514 RSF**
- **Suite 110: 1,370 RSF**
- **Suite 113: 1,387 RSF**
- Elevator, ADA accessible, tenant sign pylon
- Over 400' of frontage on East Pioneer
- Close access to Highway 167 & 512
- Near Downtown Puyallup, Good Samaritan Hospital and Pierce College
- Lease rate: \$24.00 - \$25.00 PSF, NNN

For more information:

Kim Marvik

+1 253 203 1325 • kmarvik@nai-psp.com



BELLEVUE | SEATTLE | TACOMA

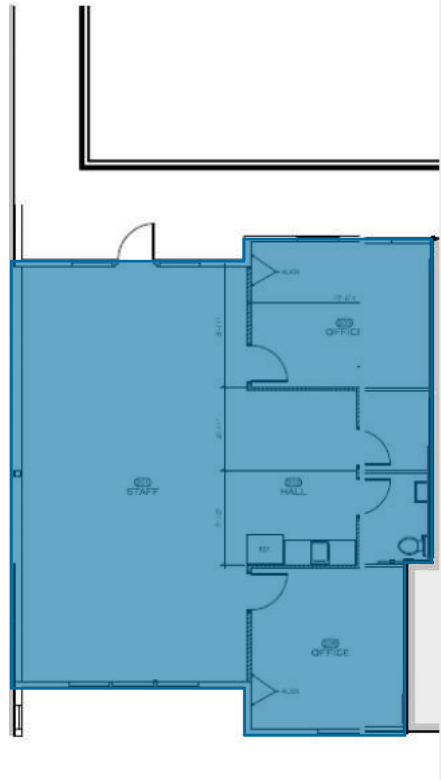
THE INFORMATION CONTAINED HEREIN HAS BEEN GIVEN TO US BY THE OWNER OF THE PROPERTY OR OTHER SOURCES WE DEEM RELIABLE, WE HAVE NO REASON TO DOUBT ITS ACCURACY, BUT WE DO NOT GUARANTEE IT. ALL INFORMATION SHOULD BE VERIFIED PRIOR TO PURCHASE OR LEASE.

914 A Street, Suite 200
Tacoma, WA 98402
+1 253 383 3100
nai-psp.com

+/- 1,370 - 1,514 RSF

Meeker's Landing

**SUITE 211
AS-BUILT**



Second Level

Suite #

Availability

Rentable Area

| Suite # | Availability | Rentable Area |
|-----------|--------------|---------------|
| Suite 211 | NOW | 1,511 RSF |



BELLEVUE | TACOMA

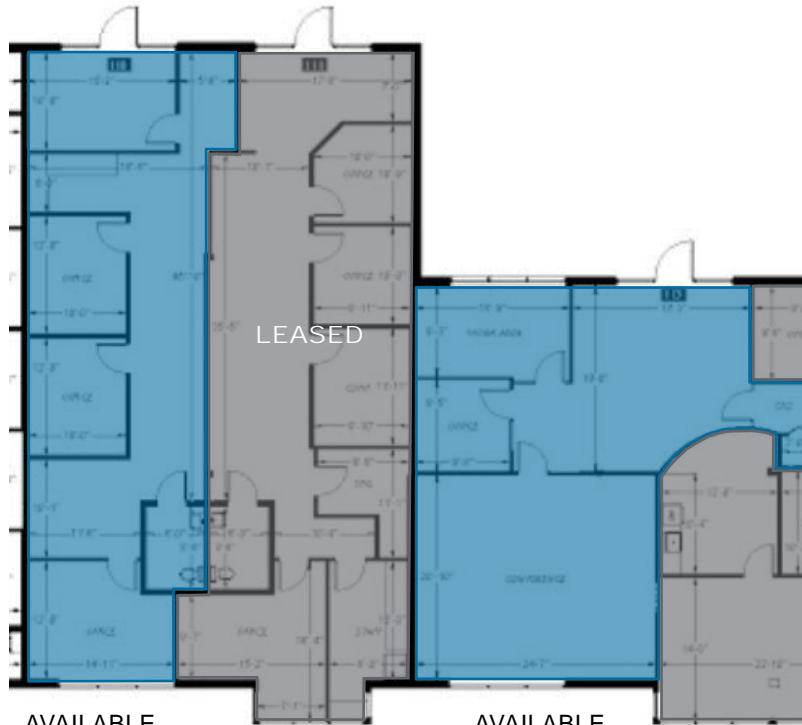
914 A Street, Suite 200
Tacoma, WA 98402
+1 253 383 3100
nai-psp.com

THE INFORMATION CONTAINED HEREIN HAS BEEN GIVEN TO US BY THE OWNER OF THE PROPERTY OR OTHER SOURCES WE DEEM RELIABLE, WE HAVE NO REASON TO DOUBT ITS ACCURACY, BUT WE DO NOT GUARANTEE IT. ALL INFORMATION SHOULD BE VERIFIED PRIOR TO PURCHASE OR LEASE.

+/- 1,370 - 1,514 RSF

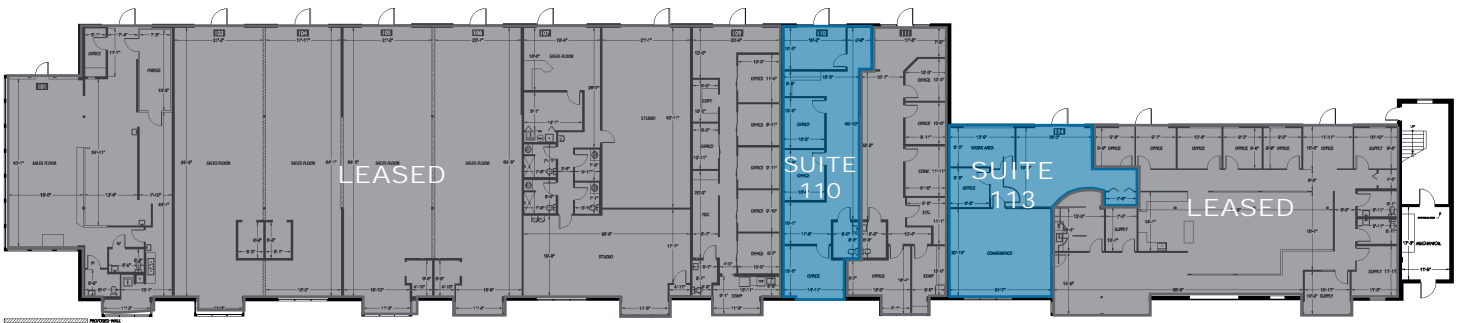
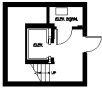
Meeker's Landing

AS-BUILT



AVAILABLE SUITE 110
1,370 RSF

AVAILABLE SUITE 113
1,387 RSF



Main Level

| Suite # | Availability | Rentable Area |
|-----------|-----------------|---------------|
| Suite 110 | October 1, 2024 | 1,370 RSF |
| Suite 113 | October 1, 2024 | 1,387 RSF |



BELLEVUE | TACOMA

914 A Street, Suite 200
Tacoma, WA 98402
+1 253 383 3100
nai-psp.com

THE INFORMATION CONTAINED HEREIN HAS BEEN GIVEN TO US BY THE OWNER OF THE PROPERTY OR OTHER SOURCES WE DEEM RELIABLE, WE HAVE NO REASON TO DOUBT ITS ACCURACY, BUT WE DO NOT GUARANTEE IT. ALL INFORMATION SHOULD BE VERIFIED PRIOR TO PURCHASE OR LEASE.

+/- 1,370 - 1,514 RSF

Meeker's Landing



Demographics

| | 2 mile | 5 miles | 10 miles |
|-------------------|----------|-----------|----------|
| TOTAL POPULATION | 36,565 | 165,083 | 735,303 |
| AVERAGE HH INCOME | \$92,458 | \$104,735 | \$95,869 |

Traffic Counts

| | |
|---------------------------|------------|
| E Main Ave & 8th St SE | 15,945 VPD |
| Pioneer Way E & 7th St SE | 14,226 VPD |
| Pioneer Way E & 5th St SE | 10,433 VPD |
| E Main Ave & 5th St SE | 14,991 VPD |



BELLEVUE | TACOMA

914 A Street, Suite 200
Tacoma, WA 98402
+1 253 383 3100
nai-psp.com

THE INFORMATION CONTAINED HEREIN HAS BEEN GIVEN TO US BY THE OWNER OF THE PROPERTY OR OTHER SOURCES WE DEEM RELIABLE, WE HAVE NO REASON TO DOUBT ITS ACCURACY, BUT WE DO NOT GUARANTEE IT. ALL INFORMATION SHOULD BE VERIFIED PRIOR TO PURCHASE OR LEASE.