



# FOR LEASE

6306 215TH ST SW, MOUNTLAKE TERRACE, WA

6306 215TH  
ST SW BLDG

215TH ST SW

**Kidder  
Mathews**

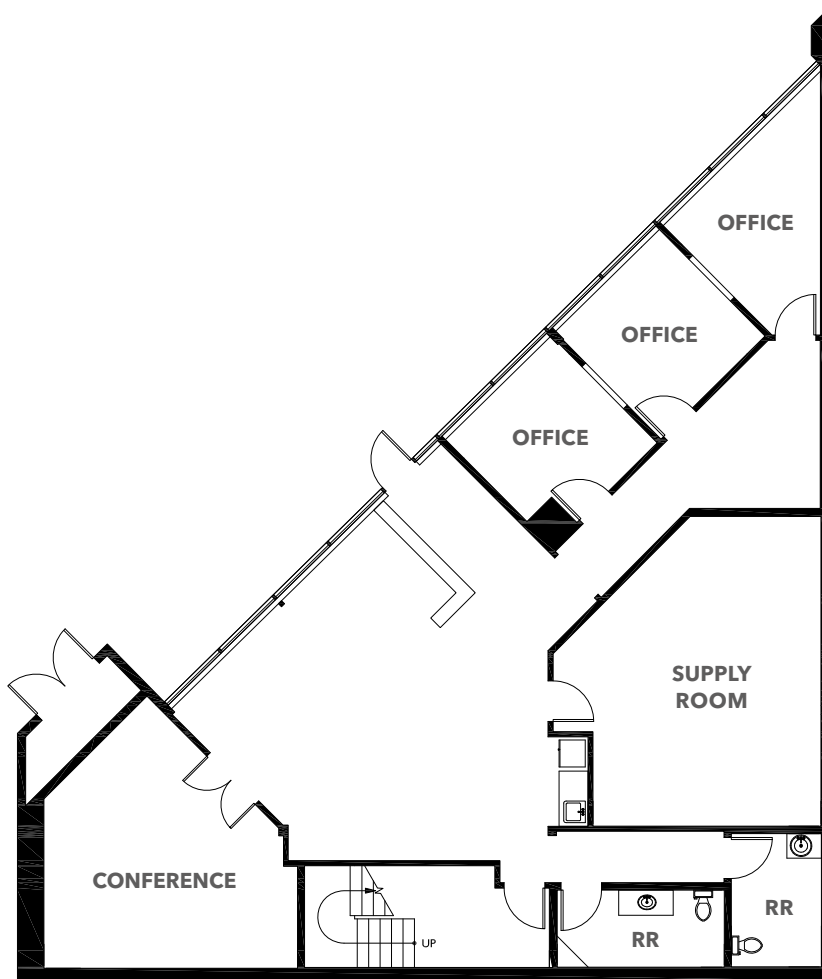
2,375 SF office space with convenient  
access to I-5 available for lease

KIDDER.COM

**FOR LEASE**

# 6306 215th St SW Building

6306 215TH ST SW, MOUNTLAKE TERRACE, WA



**2,375 SF**

OFFICE SPACE

**\$1.00/SF, NNN**

RENTAL RATE

**LOCATED JUST OFF I-5 AT  
220TH STREET EXIT**

ACCESS

**MATTHEW P. HENN**  
206.890.7800  
[matt.henn@kidder.com](mailto:matt.henn@kidder.com)

**MATTHEW HAGEN, SIOR**  
425.283.5782  
[matt.hagen@kidder.com](mailto:matt.hagen@kidder.com)

**KIDDER.COM**

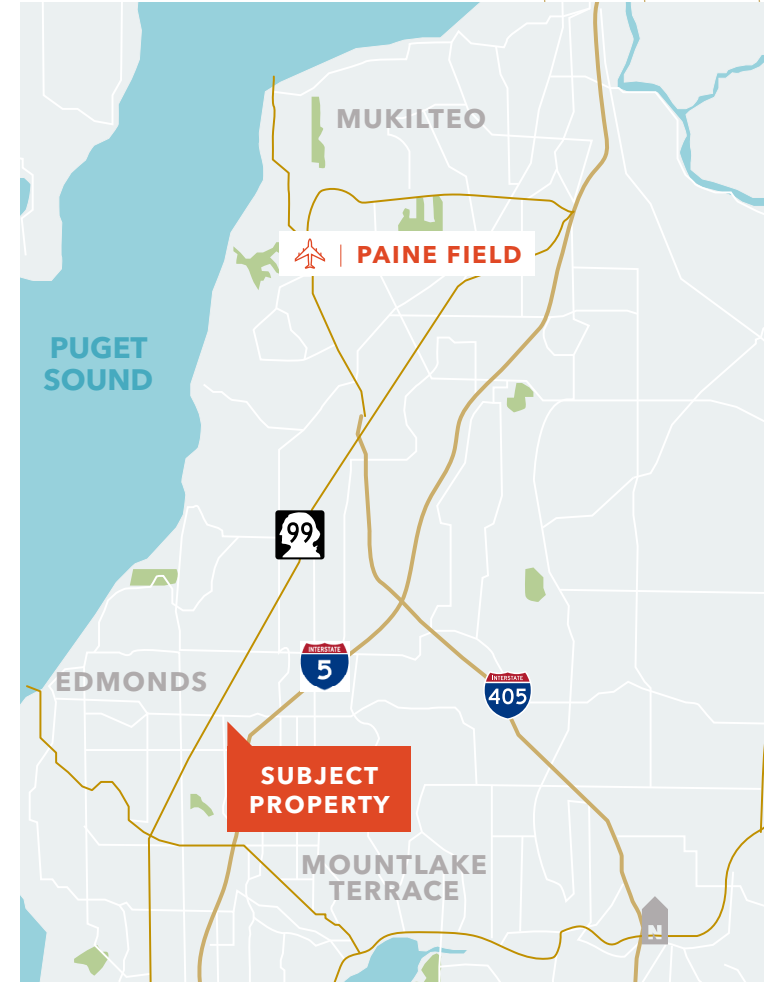
This information supplied herein is from sources we deem reliable. It is provided without any representation, warranty, or guarantee, expressed or implied as to its accuracy. Prospective Buyer or Tenant should conduct an independent investigation and verification of all matters deemed to be material, including, but not limited to, statements of income and expenses. Consult your attorney, accountant, or other professional advisor.

**km** Kidder  
Mathews

**FOR LEASE**

# 6306 215th St SW Building

6306 215TH ST SW, MOUNTLAKE TERRACE, WA



**MATTHEW P. HENN**  
206.890.7800  
[matt.henn@kidder.com](mailto:matt.henn@kidder.com)

**MATTHEW HAGEN, SIOR**  
425.283.5782  
[matt.hagen@kidder.com](mailto:matt.hagen@kidder.com)

**KIDDER.COM**

This information supplied herein is from sources we deem reliable. It is provided without any representation, warranty, or guarantee, expressed or implied as to its accuracy. Prospective Buyer or Tenant should conduct an independent investigation and verification of all matters deemed to be material, including, but not limited to, statements of income and expenses. Consult your attorney, accountant, or other professional advisor.

