

FOR LEASE

2840 CRITES ST SW STE 104

TUMWATER, WA



Hard to find small warehouse with office

Suite 104

2,295 SF

- 1,404 SF Office
- 891 SF Warehouse

Convenient Mottman Industrial Park location

Large roll-up door

\$2,500 plus utilities, per month

EVAN PARKER
360.705.0174
evan.parker@kidder.com

AMY HARDING
360.705.1377
amy.harding@kidder.com

KIDDER.COM

This information supplied herein is from sources we deem reliable. It is provided without any representation, warranty, or guarantee, expressed or implied as to its accuracy. Prospective Buyer or Tenant should conduct an independent investigation and verification of all matters deemed to be material, including, but not limited to, statements of income and expenses. Consult your attorney, accountant, or other professional advisor.

2,295

SF AVAILABLE

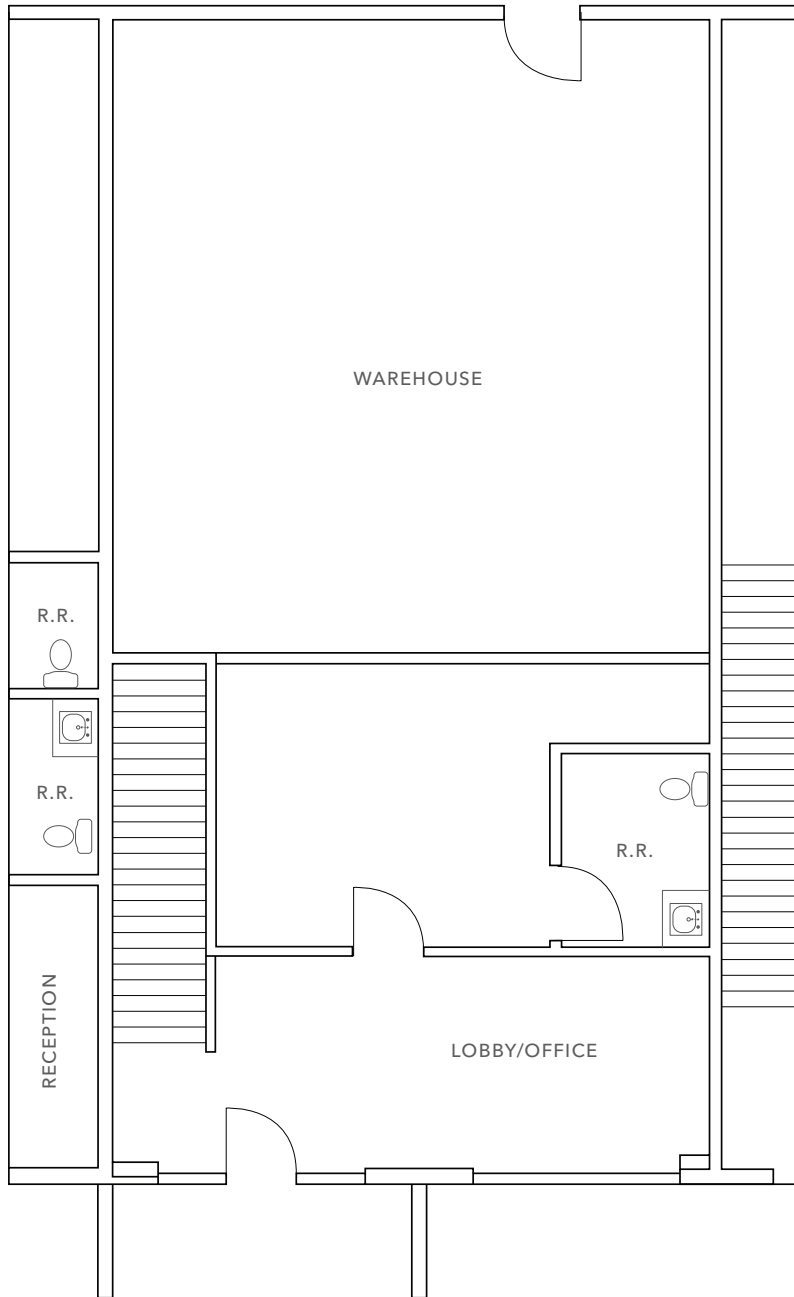
\$2,500

PLUS UTILITIES/MO.

km Kidder
Mathews

MAIN

LEVEL



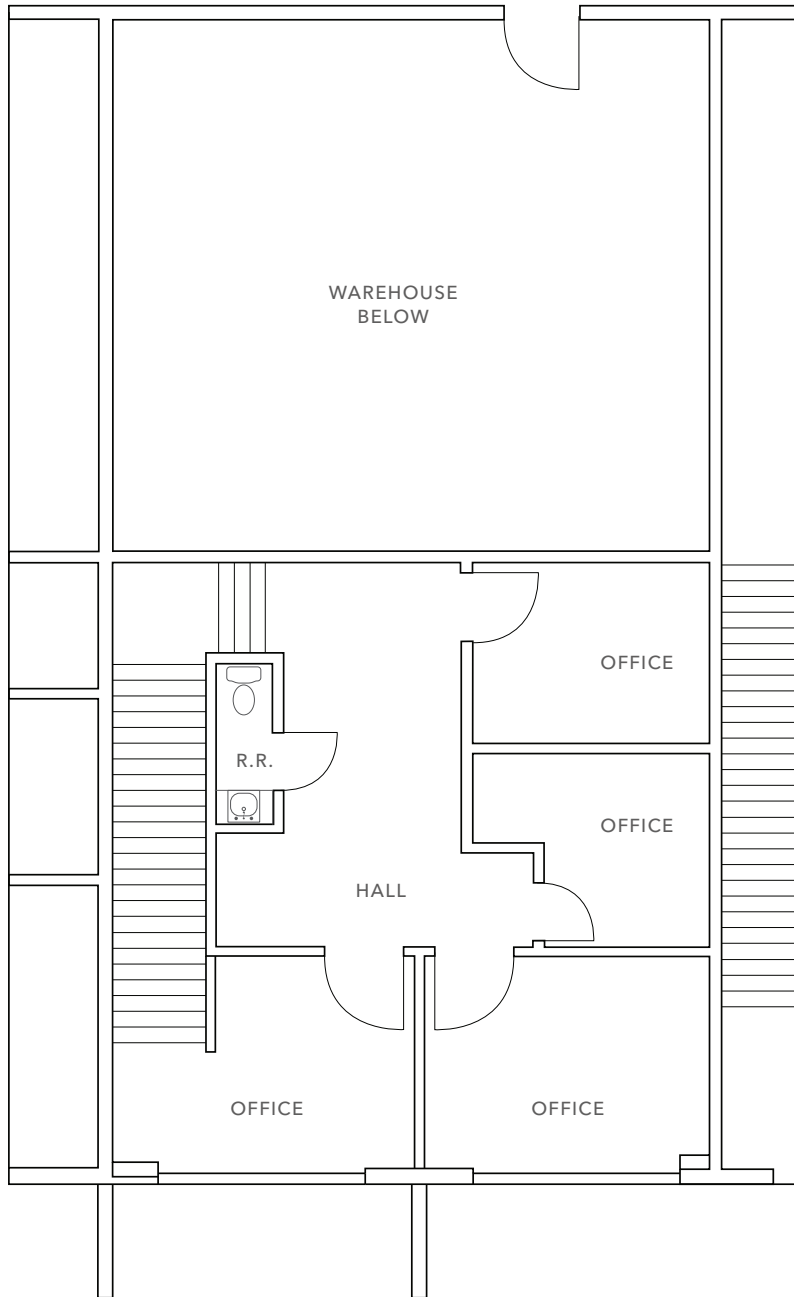
EVAN PARKER 360.705.0174 | evan.parker@kidder.com

AMY HARDING 360.705.1377 | amy.harding@kidder.com

KIDDER.COM

This information supplied herein is from sources we deem reliable. It is provided without any representation, warranty, or guarantee, expressed or implied as to its accuracy. Prospective Buyer or Tenant should conduct an independent investigation and verification of all matters deemed to be material, including, but not limited to, statements of income and expenses. Consult your attorney, accountant, or other professional advisor.

UPPER
LEVEL

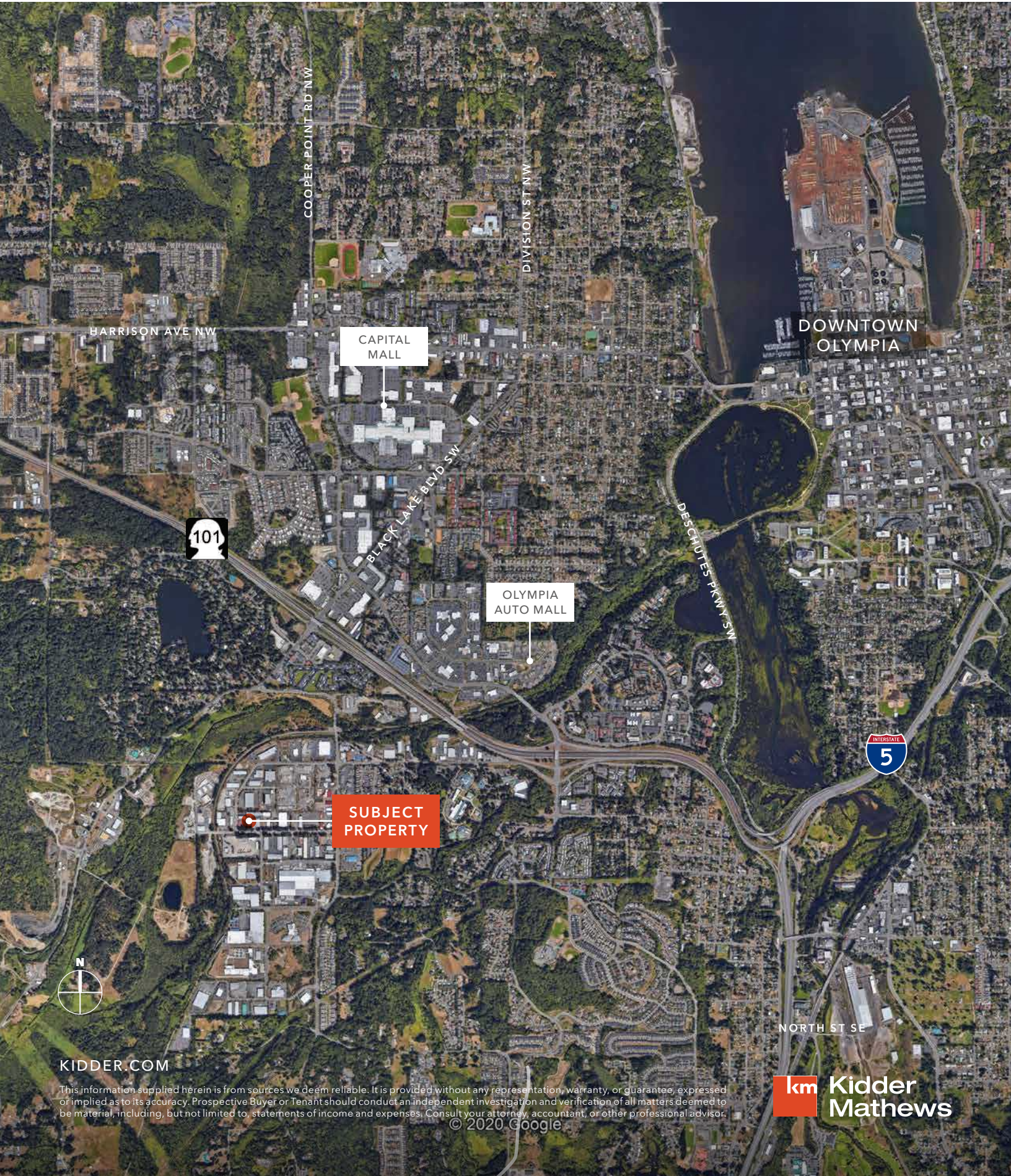


EVAN PARKER 360.705.0174 | evan.parker@kidder.com
AMY HARDING 360.705.1377 | amy.harding@kidder.com

KIDDER.COM

This information supplied herein is from sources we deem reliable. It is provided without any representation, warranty, or guarantee, expressed or implied as to its accuracy. Prospective Buyer or Tenant should conduct an independent investigation and verification of all matters deemed to be material, including, but not limited to, statements of income and expenses. Consult your attorney, accountant, or other professional advisor.





KIDDER.COM

This information supplied herein is from sources we deem reliable. It is provided without any representation, warranty, or guarantee, expressed or implied as to its accuracy. Prospective Buyer or Tenant should conduct an independent investigation and verification of all matters deemed to be material, including, but not limited to, statements of income and expenses. Consult your attorney, accountant, or other professional advisor.
© 2020 Google

NORTH ST SE

km Kidder Mathews