

## 5,650 SF WAREHOUSE PROPERTY FOR SUBLEASE

# Pacific Business Park South, Building 11

12595 NE MARX STREET, PORTLAND, OR 97230



Sublease available for warehouse space in the Airport Way area,  
5,650 SF, valid until April 30, 2027

### CONTACT

**Christopher Lio** c 503 804 2929 / o 503 224 6791 / [clio@naielliott.com](mailto:clio@naielliott.com)  
**Mike Mayer** c 503 686 0599 / o 503 224 6791 / [mmayer@naielliott.com](mailto:mmayer@naielliott.com)



# Flexible loading options



## PROPERTY DETAILS

- SUBLEASE through April 30, 2027
- Call for rates
- 5,650 SF warehouse shell
- 1,500 SF office
- Office updated in 2021 w/two RR, breakroom and four privates
- 16' clear
- Two dock doors
- Three grade doors; one w/ramp
- LED lighting w/motion sensors in warehouse



## CONTACT

**Christopher Lio** c 503 804 2929 / o 503 224 6791 / [clio@naielliott.com](mailto:clio@naielliott.com)  
**Mike Mayer** c 503 686 0599 / o 503 224 6791 / [mmayer@naielliott.com](mailto:mmayer@naielliott.com)

**NAI Elliott**

Two docks, three grade level doors, one ramped door



## CONTACT

**Christopher Lio** c 503 804 2929 / o 503 224 6791 / [clio@naielliott.com](mailto:clio@naielliott.com)  
**Mike Mayer** c 503 686 0599 / o 503 224 6791 / [mmayer@naielliott.com](mailto:mmayer@naielliott.com)

**NAI Elliott**

# Available spaces



## AVAILABLE SPACES

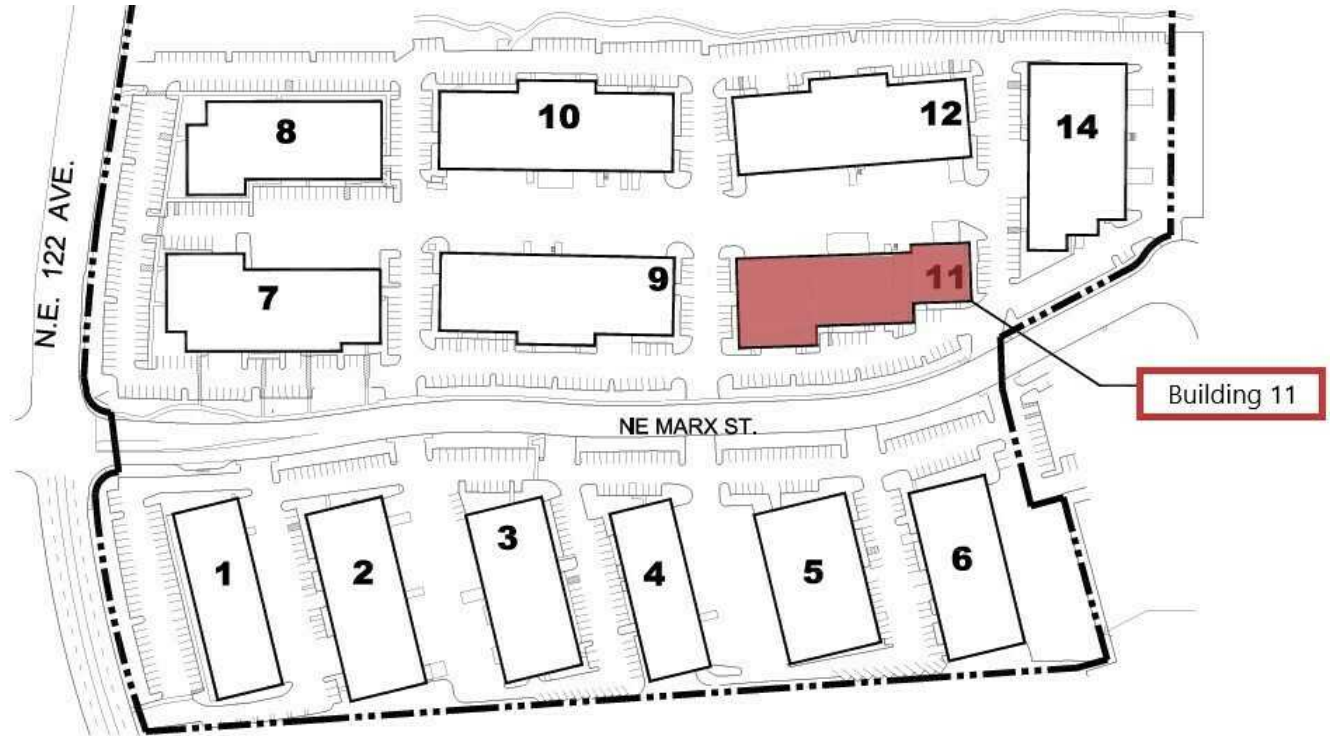
SUITE	TENANT	SIZE (SF)	LEASE TYPE	LEASE RATE
12595 NE Marx Street	Available	5,650 SF	NNN	Negotiable

## CONTACT

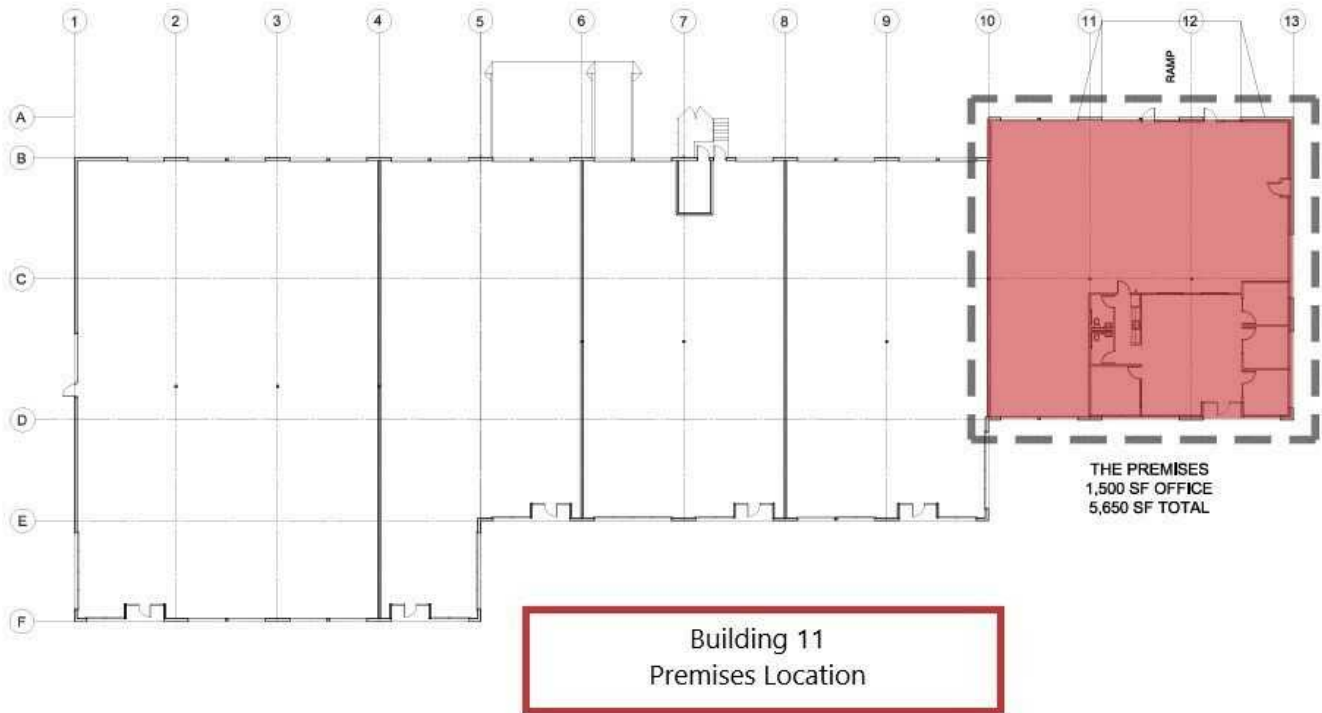
**Christopher Lio** c 503 804 2929 / o 503 224 6791 / clio@naielliott.com  
**Mike Mayer** c 503 686 0599 / o 503 224 6791 / mmayer@naielliott.com



# Site plan of space in the business park



**PACIFIC BUSINESS PARK (SOUTH)**

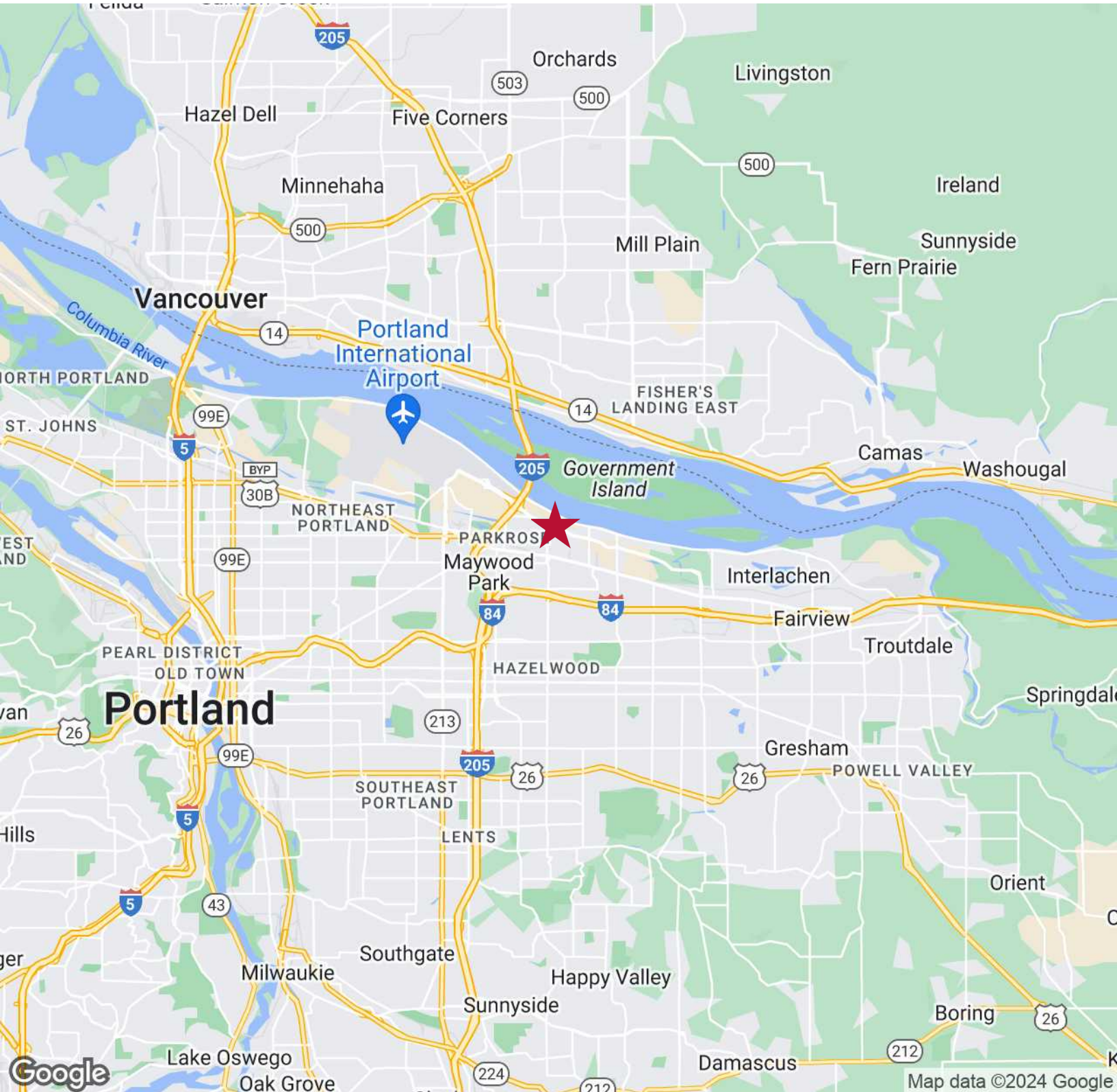


## CONTACT

**Christopher Lio** c 503 804 2929 / o 503 224 6791 / clio@naielliott.com  
**Mike Mayer** c 503 686 0599 / o 503 224 6791 / mmayer@naielliott.com



# Location map

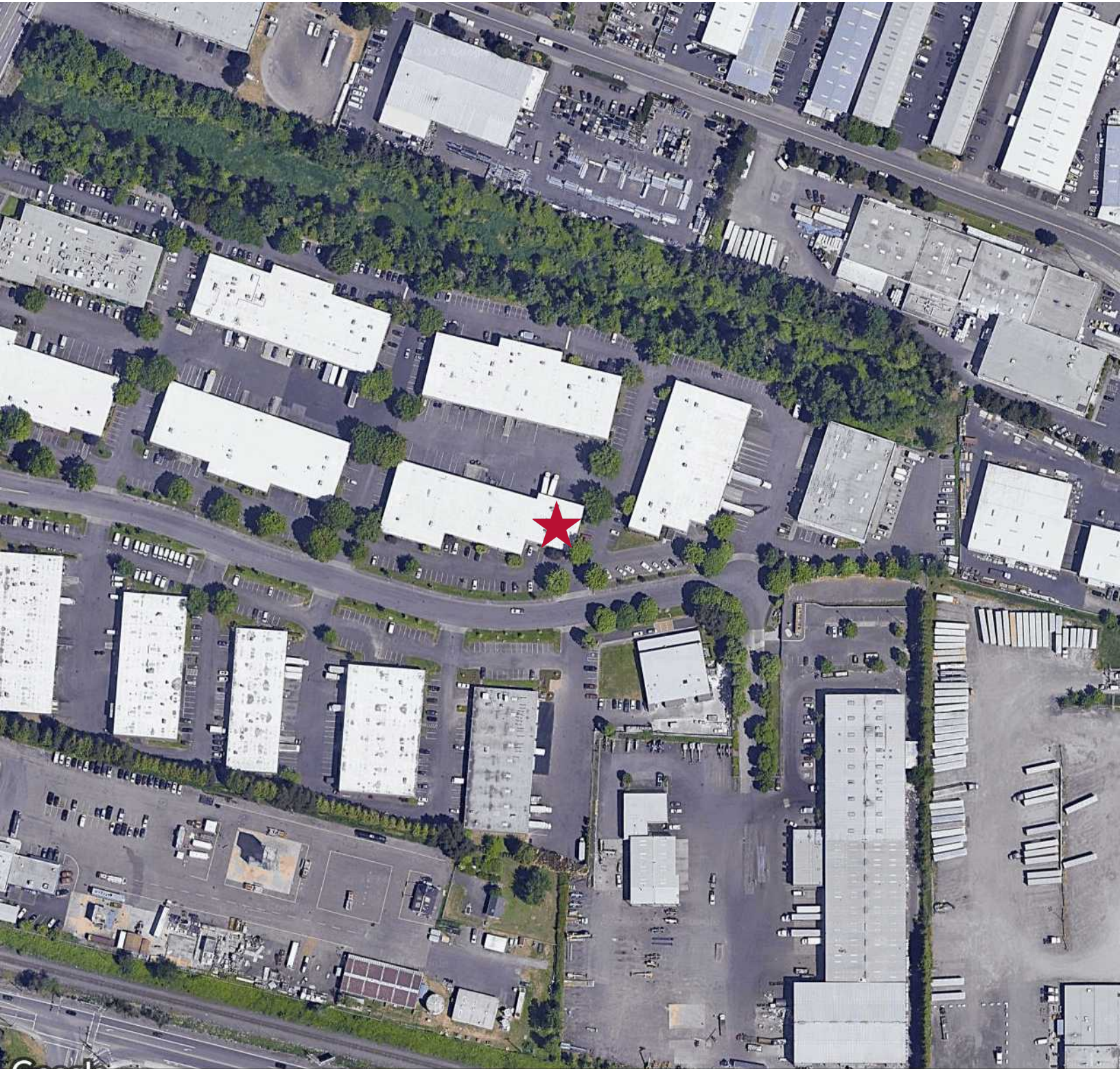


## CONTACT

**Christopher Lio** c 503 804 2929 / o 503 224 6791 / clio@naielliott.com  
**Mike Mayer** c 503 686 0599 / o 503 224 6791 / mmayer@naielliott.com



# Aerial map



© 2024 Airbus, Maxar Technologies, Metro, Portland Oregon, State of Oregon, U.S. Geological Survey, USDA/FPAC/GEO

## CONTACT

**Christopher Lio** c 503 804 2929 / o 503 224 6791 / clio@naielliott.com  
**Mike Mayer** c 503 686 0599 / o 503 224 6791 / mmayer@naielliott.com



The information herein has been obtained from sources we deem reliable. We do not, however, guarantee its accuracy. All information should be verified prior to purchase/leasing. View the Real Estate Agency Pamphlet by visiting our website, [www.naielliott.com/agencydisclosures](http://www.naielliott.com/agencydisclosures)