

FOR LEASE

EVERGREEN PROFESSIONAL BLDG

*Medical & Office Space for
Lease one block from Evergreen
Hospital Campus in Kirkland, WA*



13131 120TH AVE NE, KIRKLAND, WA 98034



Features

Located minutes from Evergreen Health Medical Center

Directly off of I-405 freeway

Free surface parking

No practice type restrictions

Suite B - 1,697 SF, existing dental build-out

Suite C - 1,064 SF, white box condition

Suite D - 952 SF

Suites can be combined for 3,713 SF SF of space

For more information, contact:

GARY GUENTHER

425.450.1154

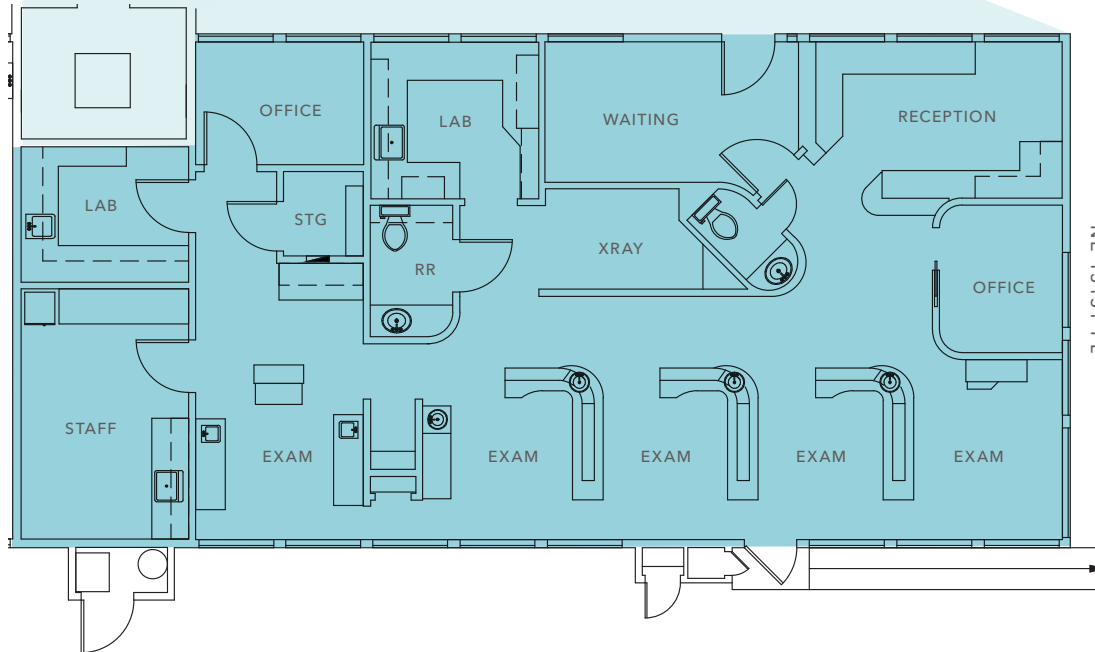
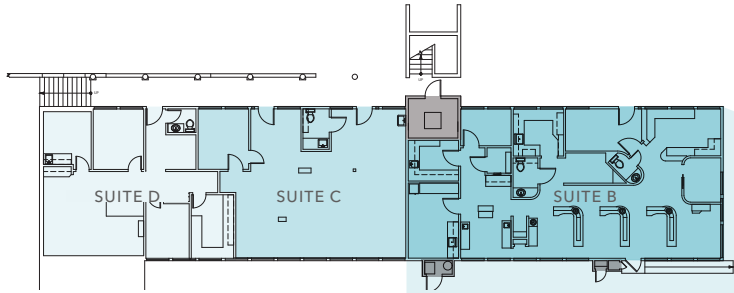
gary.guenther@kidder.com

CHARLES CAPLICE

425.450.1160

charles.caplice@kidder.com

FLOOR PLAN - SUITE B



±1,697 SF

AVAILABLE SPACE

\$34/SF

LEASE RATE, NNN

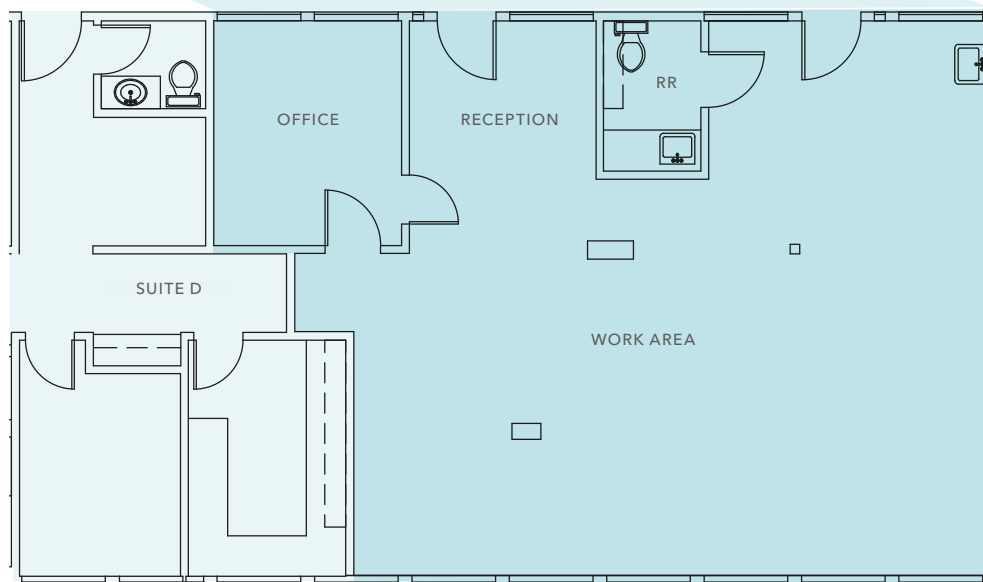
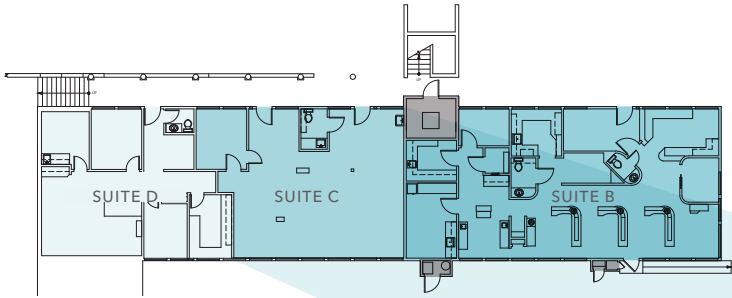
09/01/24

AVAILABLE

Suites can be combined for 3,713 SF of space



FLOOR PLAN - SUITE C



±1,064 SF

AVAILABLE SPACE

\$34/SF

LEASE RATE, NNN

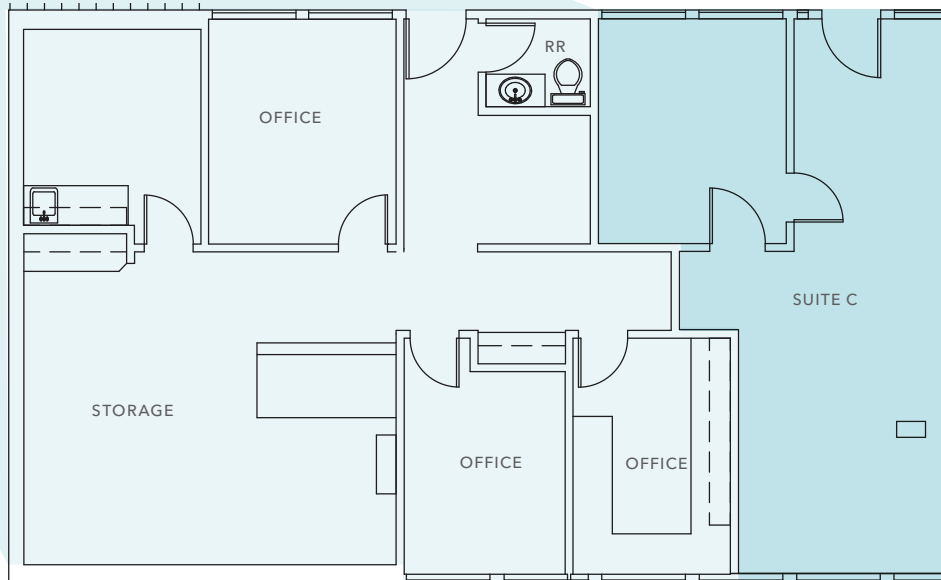
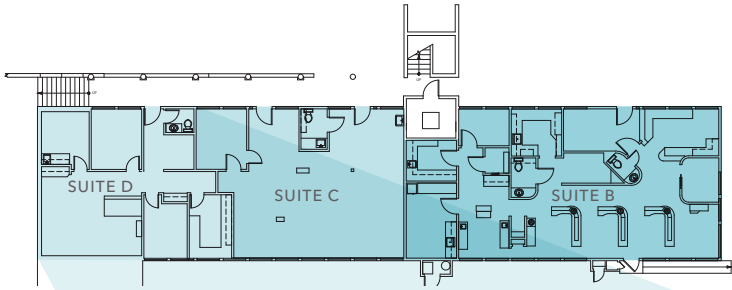
NOW

AVAILABLE

Suites can be combined for 3,713 SF of space



FLOOR PLAN - SUITE D



±952 SF

AVAILABLE SPACE

\$34/SF

LEASE RATE, NNN

NOW

AVAILABLE

Suites can be combined for 3,713 SF of space



EVERGREEN PROFESSIONAL BLDG



THE VILLAGE AT TOTEM LAKE

TRADER JOE'S	MOD	WHOLE FOODS MARKET
KeyBank	BARNES & NOBLE	verizon
ROSS DRESS FOR LESS	CINEMARK	HOBBYLOBBY RACK

EVERGREEN PROFESSIONAL BLDG



For more information, contact:

GARY GUENTHER
425.450.1154
gary.guenther@kidder.com

CHARLES CAPLICE
425.450.1160
charles.caplice@kidder.com

KIDDER.COM

This information supplied herein is from sources we deem reliable. It is provided without any representation, warranty, or guarantee, expressed or implied as to its accuracy. Prospective Buyer or Tenant should conduct an independent investigation and verification of all matters deemed to be material, including, but not limited to, statements of income and expenses. Consult your attorney, accountant, or other professional advisor. All Kidder Mathews designs are the sole property of Kidder Mathews. Branded materials and layouts are not authorized for use by any other firm or person.

**km Kidder
Mathews**