

PROVIDENT BUILDING

568 1st Ave S | Seattle, WA
providentseattle.com



NEWMARK

**MARTIN
SMITH
- INC -**



Building Description







- Located in Pioneer Square, the former warehouse building is constructed of heavy timber, seismically reinforced brick and concrete.
- Completely renovated in the year 2000, the building is a quick walk from the Seattle Waterfront, major transit hubs and direct freeway access to I-5 and I-90.
- Located across the street from Lumen Field with views of Elliott Bay and adjacent to recent residential, retail and hotel developments in the neighborhood.

Building Design

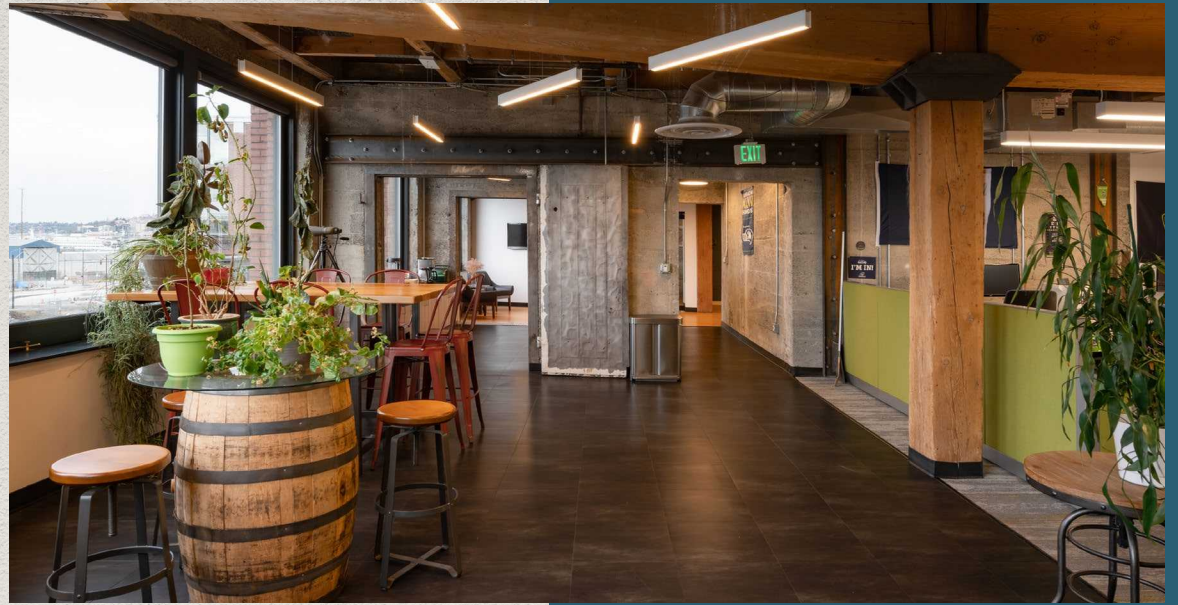
Size	56,107 SF
Floors	Six stories
Year Built	1910
Floors	Typical floor size is approximately 10,300 SF
Elevators	Two (2) passenger elevators



Building Amenities

-  Secure key-card access building
-  Below grade parking
-  Tenant shower facilities
-  Bicycle parking
-  Rooftop view deck
-  HVAC





Availabilities

Suite 200

10,212 SF

 [Virtual Tour](#)

Suite 300

10,246 SF

 [Virtual Tour](#)

Suite 400

10,305 SF

 [Virtual Tour](#)

Suite 500

7,449 SF

The Neighborhood

1 Block

from T-Mobile Park Stadium
and adjacent to Seattle Lumen
Field Stadium

1 Block

from the future Seattle Waterfront

2 Blocks

from Union Station

5 Blocks

to I-5 and I-90 access points

6 Blocks

from Pioneer Square amenities

20+

restaurants, coffee shops and retail
amenities within a 5 minute walk



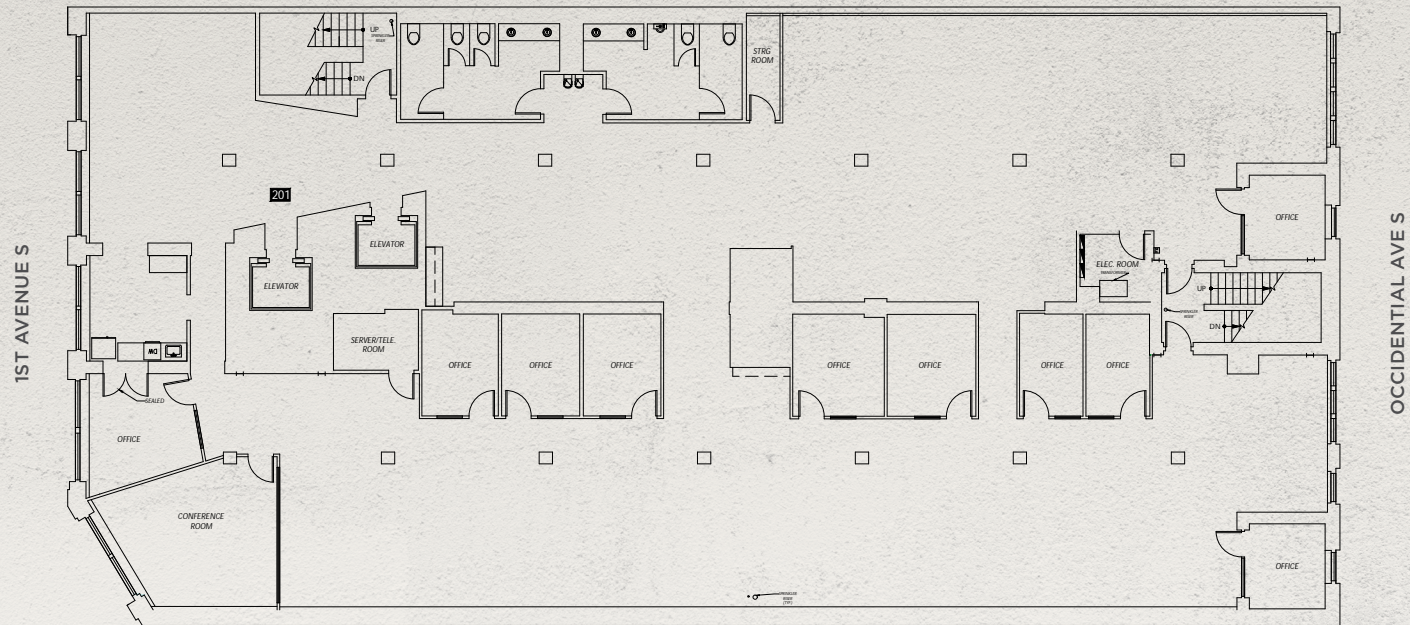
Suite 200

10,212 SF

Available Now

 Virtual Tour

ADJACENT BUILDING



ADJACENT BUILDING



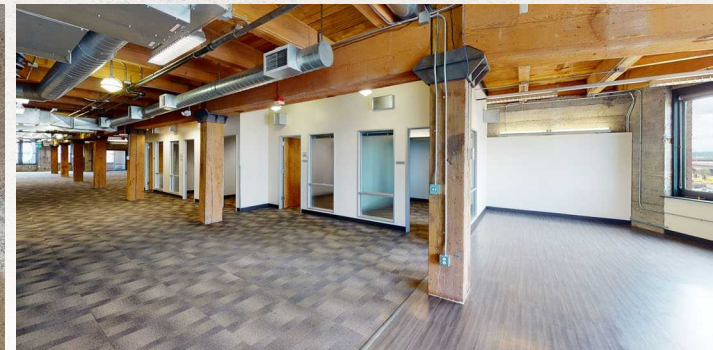
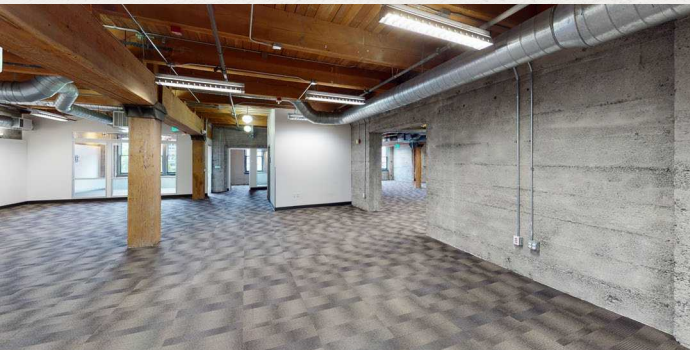
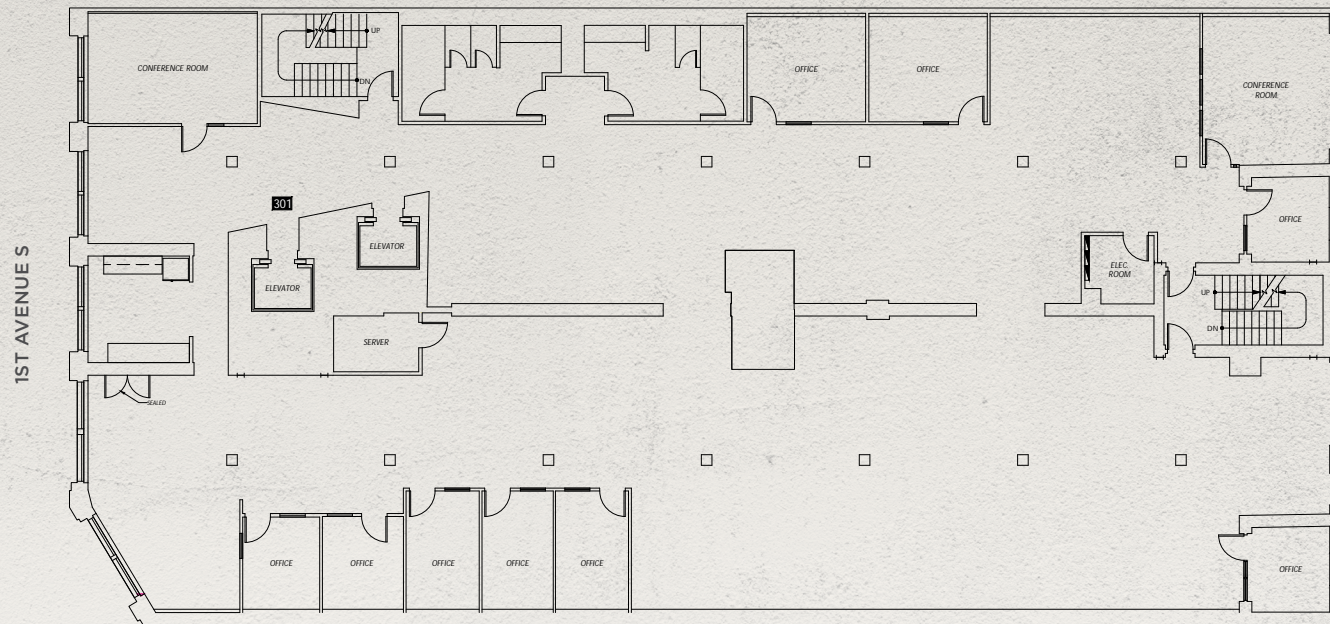
Suite 300

10,246 SF

Available Now

 Virtual Tour

ADJACENT BUILDING



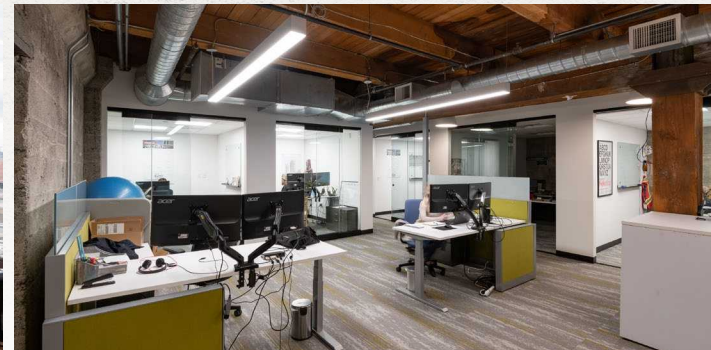
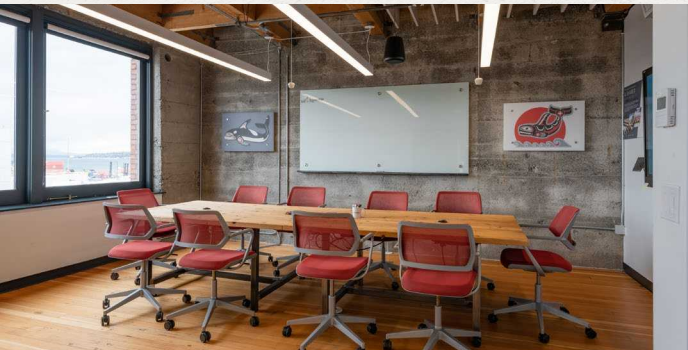
Suite 400

10,305 SF

Available Now

 Virtual Tour

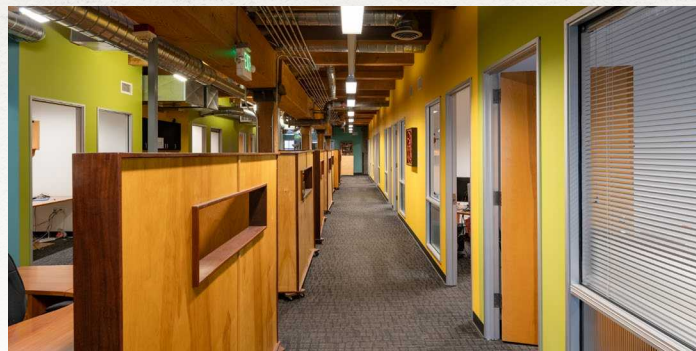
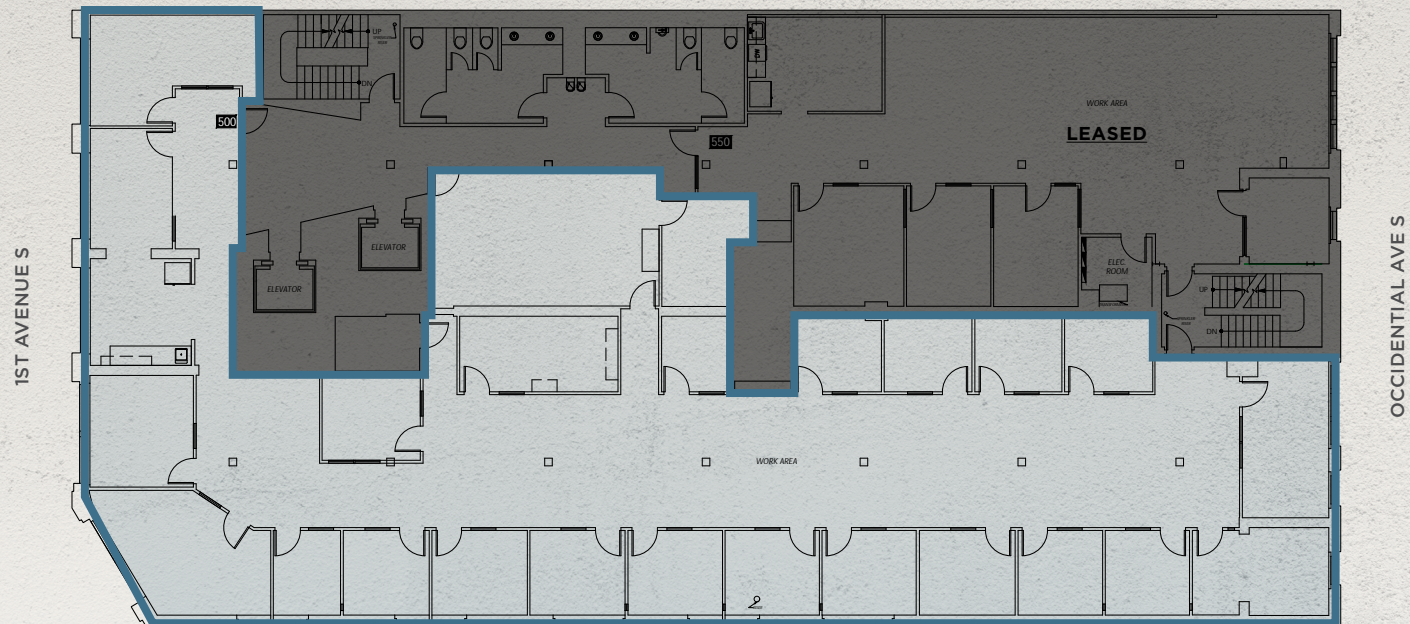
ADJACENT BUILDING



Suite 500

7,449 SF

Available Now



PROVIDENT BUILDING

568 1st Ave S | Seattle, WA

PROVIDENTSEATTLE.COM

Daniel Seger

206.487.5163

daniel.seger@nmrk.com

Tracy Turnure

425.372.9923

tracy.turnure@nmrk.com

Cavan O'Keefe

206.395.2903

cavan.okeefe@nmrk.com

Mark Astor

206.719.0291

mastor@martinsmith.com

NEWMARK

**MARTIN
SMITH**

- INC -

The distributor of this communication is performing acts for which a real estate license is required. The information contained herein has been obtained from sources deemed reliable but has not been verified and no guarantee, warranty or representation, either express or implied, is made with respect to such information. Terms of sale or lease and availability are subject to change or withdrawal without notice. www.nmrk.com