

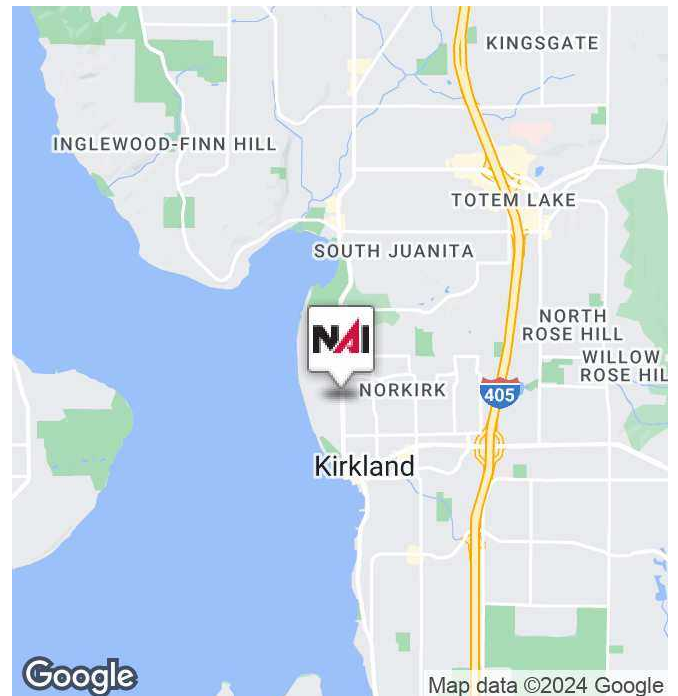


# 1029 Market St, Suite 201

Kirkland, Washington 98033

## Property Highlights

- Excellent location, signage & Visibility on Market Street
- Walking distance to downtown services and Marina Park
- Nine (9) Covered Parking Stalls
- 3,223 Rentable Square Feet (to be demised)
- Shared outdoor deck amenity to 2nd Floor only
- \$34.00 psf, NNN (approx. \$12.00 psf NNNs)
- Walk score of 74, transit score 46



**John Werdel, CCIM**  
Partner | 206.332.1488  
jwerdel@nai-psp.com

**Blake Stedman**  
Senior Vice President | 425.652.1722  
bstedman@nai-psp.com





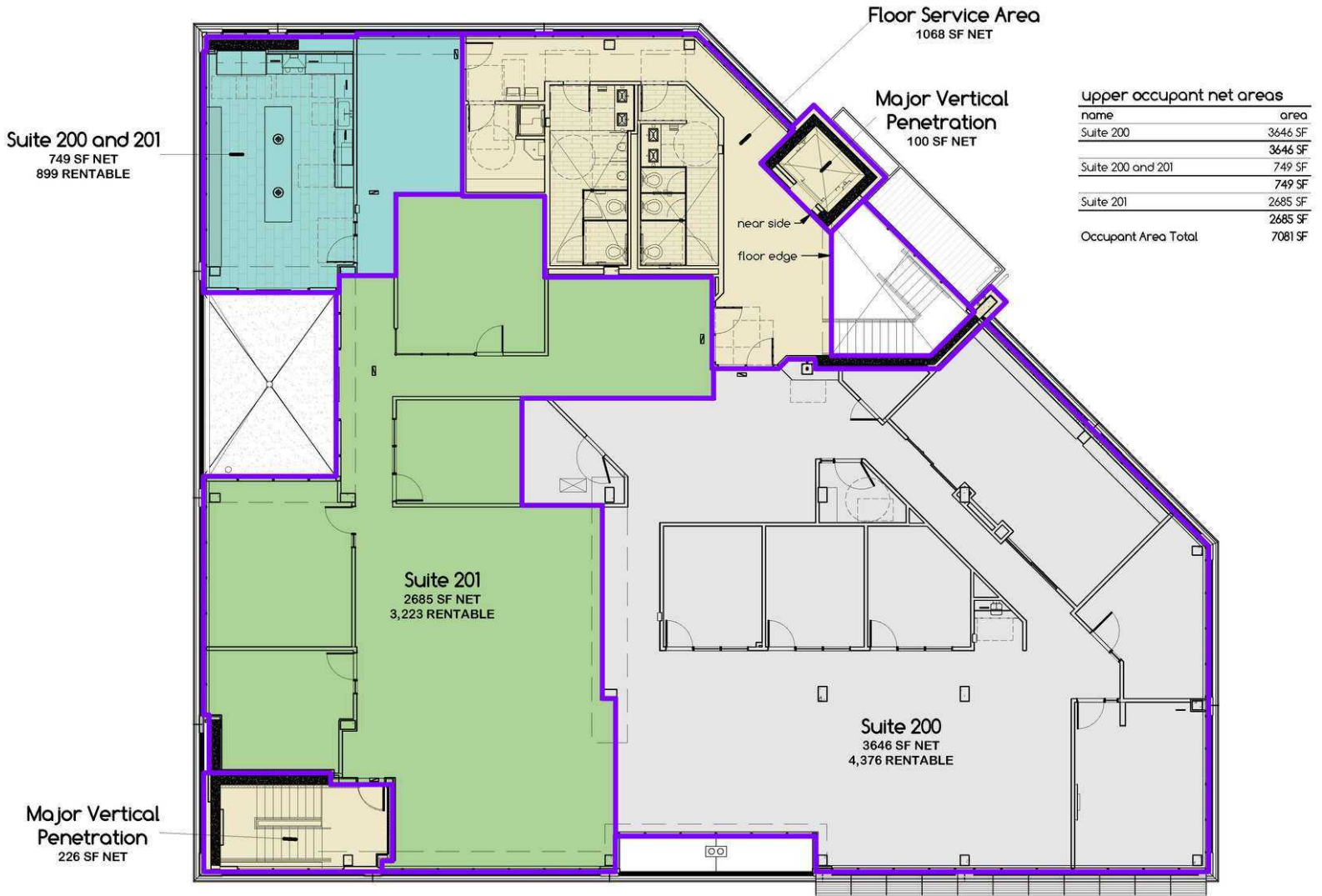
FOR LEASE



OFFICE



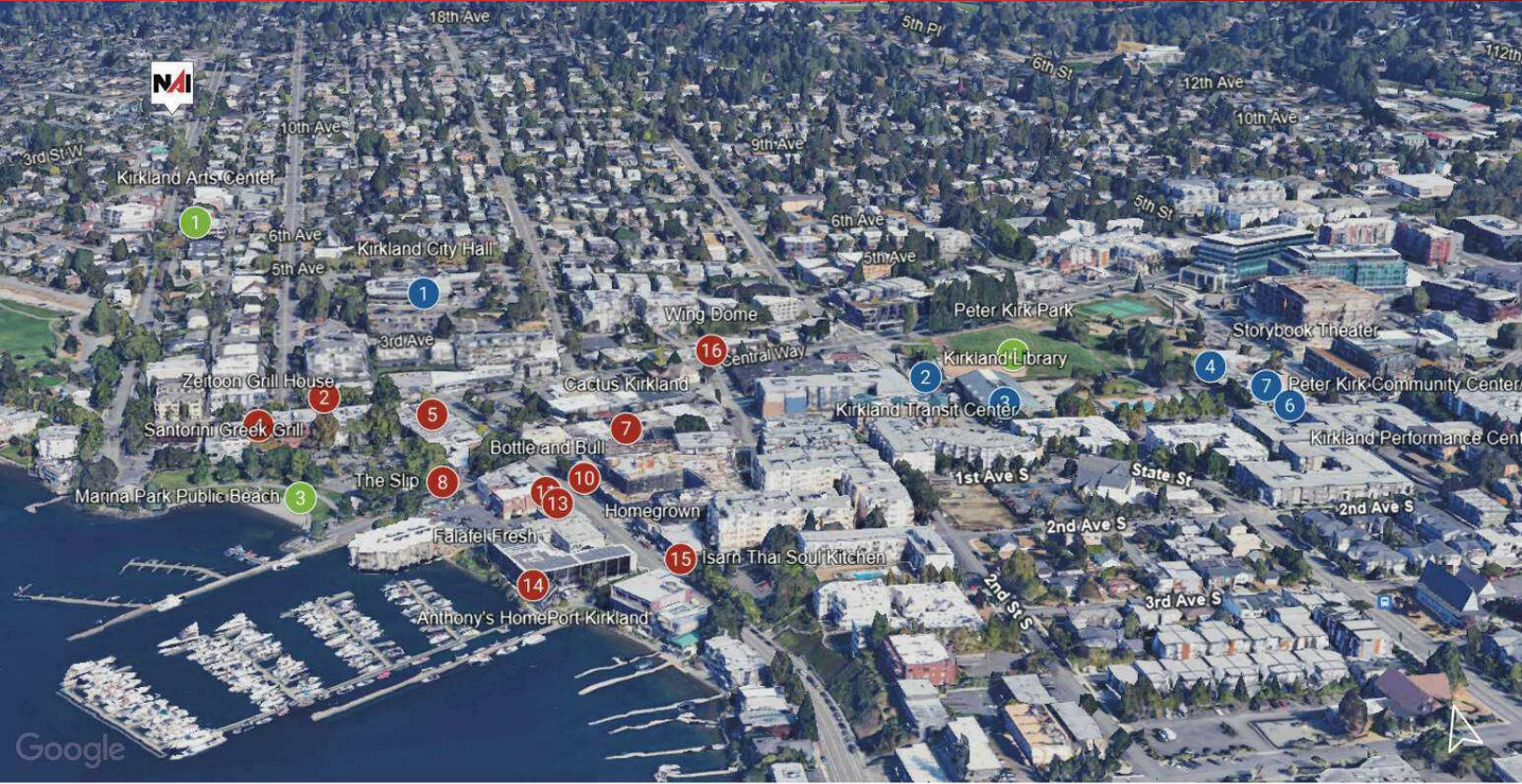
3,223 SF



**John Werdel, CCIM**  
Partner | 206.332.1488  
jwerdel@nai-psp.com

**Blake Stedman**  
Senior Vice President | 425.652.1722  
bstedman@nai-psp.com





**PUBLIC SERVICES**

1. Kirkland City Hall
2. Kirkland Transit Center
3. Kirkland Library
4. Storybook Theater
5. Peter Kirk Pool
6. Kirkland Performance Center
7. Peter Kirk Community Center

**PARKS & RECREATION**

1. Kirkland Arts Center
2. Heritage Park
3. Marina Park Public Beach
4. Peter Kirk Park

**RESTAURANTS**

1. Sur La Table
2. Santorini Greek Grill
3. Coastline Burgers
4. Zeitoon Grill House
5. Zoka Coffee Roasters
6. Flatstick Pub
7. Cactus
8. The Slip
9. George's
10. Homegrown
11. Bottle & Bull
12. Juke Poke
13. Falafel Fresh
14. Anthony's HomePort
15. Isarn Thai Soul Kitchen
16. Wing Dome
17. 5 Stones Coffee Co.

**74**  
WALK SCORE

**49**  
BIKE SCORE

**46**  
TRANSIT SCORE

**John Werdel, CCIM**  
Partner | 206.332.1488  
jwerdel@nai-psp.com

**Blake Stedman**  
Senior Vice President | 425.652.1722  
bstedman@nai-psp.com

