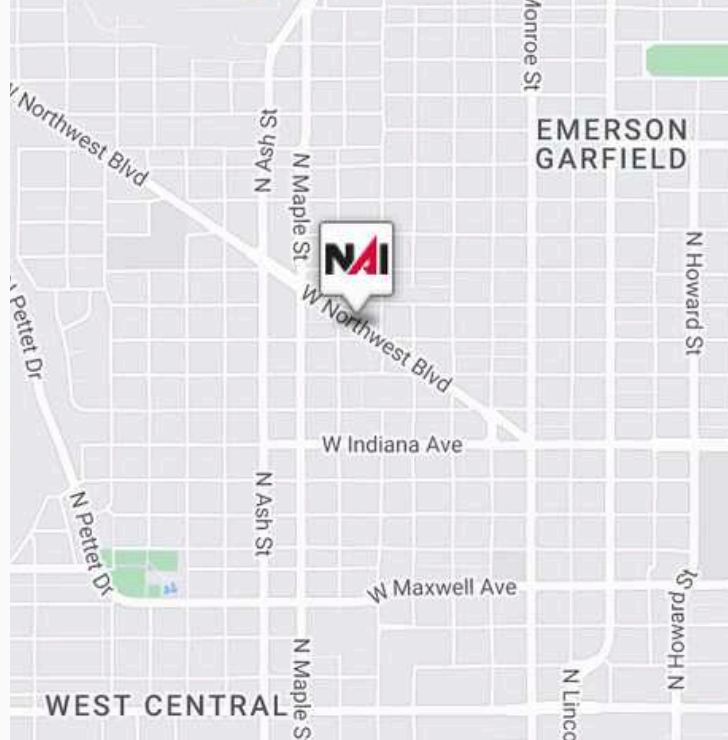


# OFFICE FOR SALE OR LEASE

**1401 W Northwest Blvd.**  
**Spokane, WA 99205**



Corner Location



± 1,717 SF Stand-Alone Building



On-Sight Parking

**\$489,000 OR \$2,000 / MONTH (NNN)**

## Property Description:

- Space Available: ± 1,717 SF
- Open Floorplan
- 1 Bathroom
- Building and Pylon Signage
- Corner Location with High Visibility
- ADT: 18,300 VPD
- Parking: 5-Stripped and free on-street parking

## For more information:

**Mark McLees:**

☎ 509-622-3554

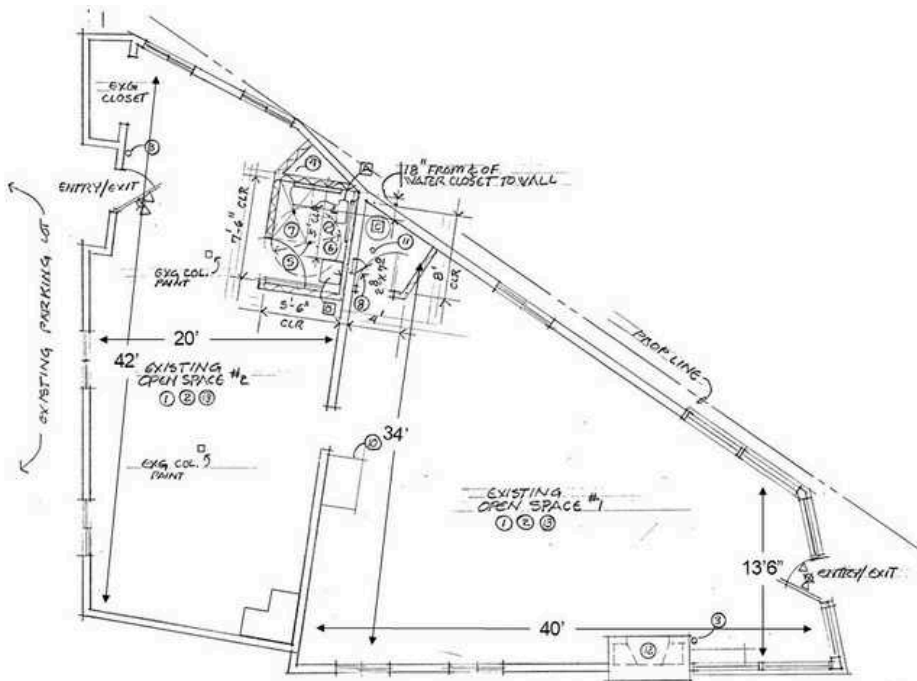
✉ [mmclees@naiblack.com](mailto:mmclees@naiblack.com)

**Madeleine Baier:**

☎ 509-496-6144

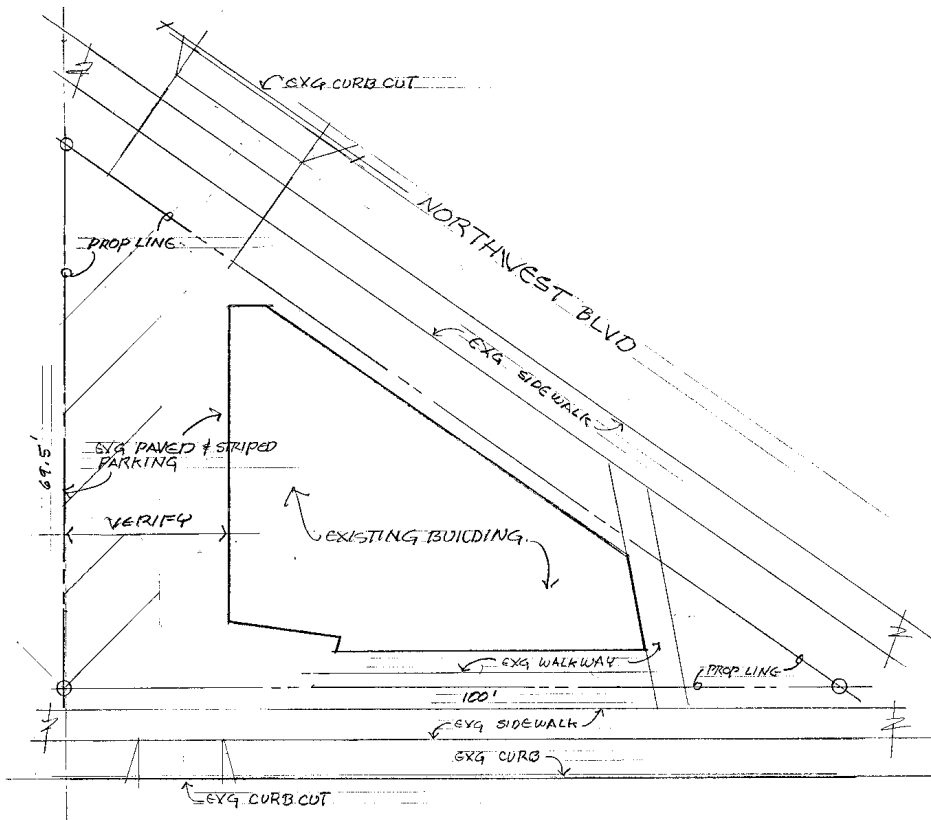
✉ [mbaier@firstlookre.com](mailto:mbaier@firstlookre.com)

## Interior Floor Plan



All measurements are estimates. Buyer or Tenant to conduct its own survey of the property to confirm.

## Site Plan



No warranty or representation, expression or implied, is made as to the accuracy of the information contained herein, and the same is submitted subject to errors, omissions, change of price, rental or other conditions, prior to sale, lease, financing, or withdrawal without notice, and of special listing conditions imposed by our principals no warranties or representations are made as to the condition of the property or any hazards contained therein or any to be implied.



No warranty or representation, expression or implied, is made as to the accuracy of the information contained herein, and the same is submitted subject to errors, omissions, change of price, rental or other conditions, prior to sale, lease, financing, or withdrawal without notice, and of special listing conditions imposed by our principals no warranties or representations are made as to the condition of the property or any hazards contained therein or any to be implied.