

FOR LEASE

EVERETT INDUSTRIAL SITE

*±52.5-Acre Yard Site for Lease
on Smith Island in Everett, WA*

3620 36TH PL NE, EVERETT, WA

SUBJECT
PROPERTY

36TH PL NE

34TH AVE NE

529

KIDDER.COM

km Kidder
Mathews



IOS yard site suitable for numerous uses in Everett

Zoned Industrial (I), City of Everett

Approximately 52.5 acres

Multiple configurations available

Direct access off SR-529

Rail potential

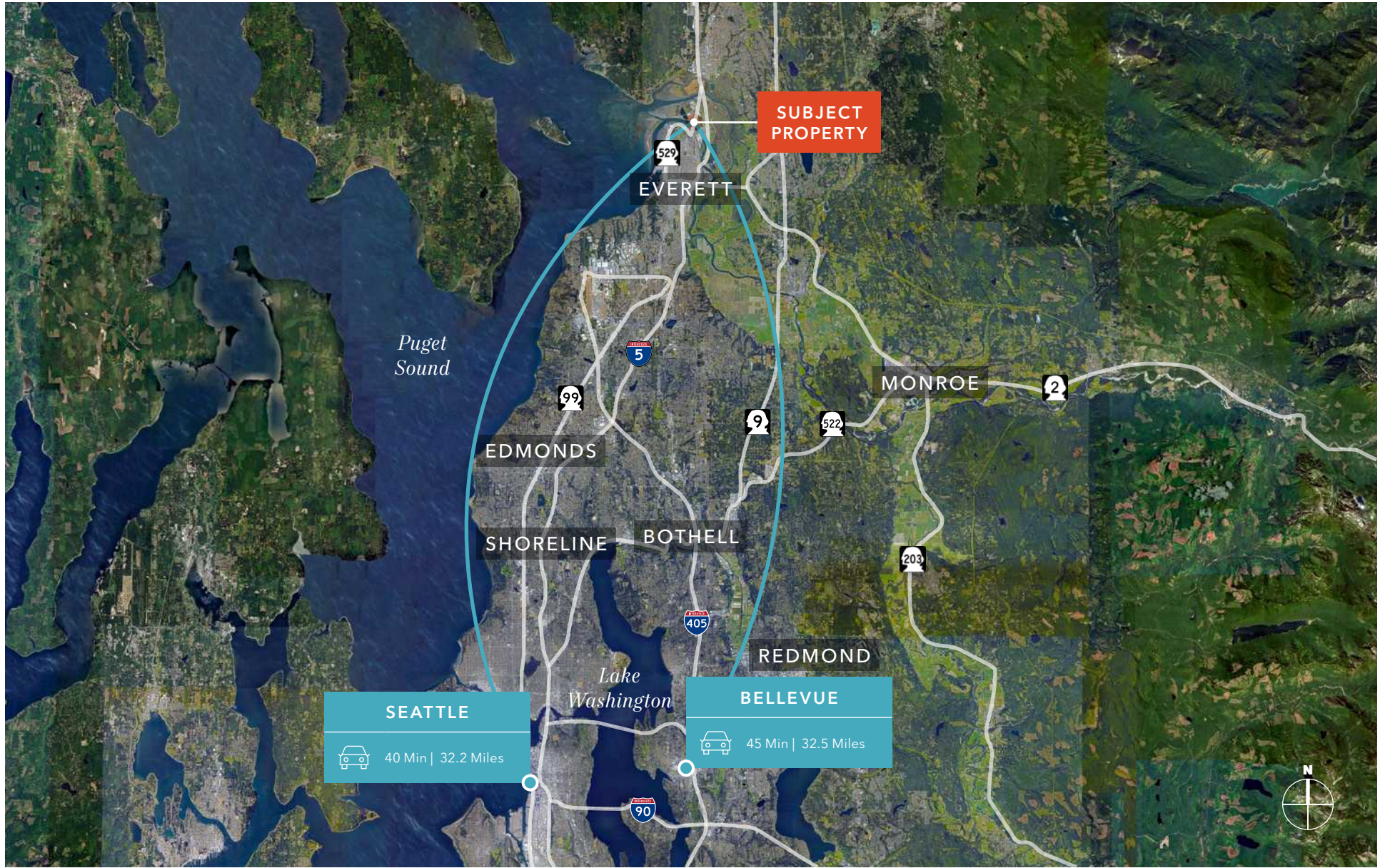
Signage available

Call brokers for rates

±52.5
TOTAL ACRES

ZONED
INDUSTRIAL (I)

EVERETT INDUSTRIAL SITE



EVERETT INDUSTRIAL SITE

Exclusively listed by

TODD GAUTHIER

425.450.1118

todd.gauthier@kidder.com

JASON BLOOM

425.450.1102

jason.bloom@kidder.com

KIDDER.COM

This information supplied herein is from sources we deem reliable. It is provided without any representation, warranty, or guarantee, expressed or implied as to its accuracy. Prospective Buyer or Tenant should conduct an independent investigation and verification of all matters deemed to be material, including, but not limited to, statements of income and expenses. Consult your attorney, accountant, or other professional advisor.

km Kidder
Mathews