

711 E 11TH STREET

Dead Storage | Racking Available



LISTING INFORMATION

ADDRESS:	711 E 11th Street, Tacoma WA
AVAILABLE SF:	20,000 SF of Dead Storage Space
YARD SIZE:	25,000 SF (Paved and Fully Fenced)
CLEAR HEIGHT:	22'
LOADING:	1 Pony Dock Door 1 Grade Door
SUBLEASE TERM:	4/30/2030 (Flexible term available)
LEASE RATE:	\$12,000/Month Gross

LOCATION



The information provided herein is from sources we deem reliable, however it is provided without any guarantee or representation as to its accuracy. Prospective parties should independently verify all information prior to entering into any agreements.

LEE & ASSOCIATES
COMMERCIAL REAL ESTATE SERVICES

711 E 11TH STREET

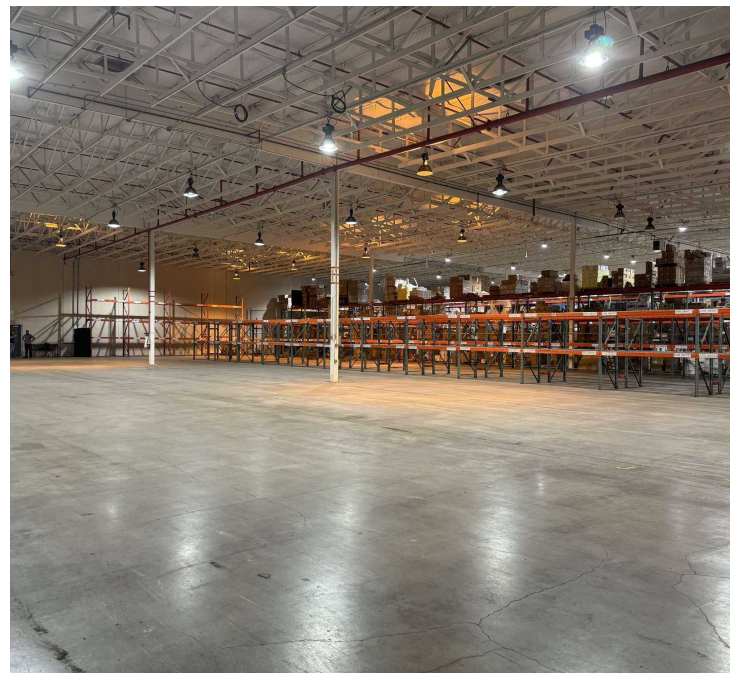
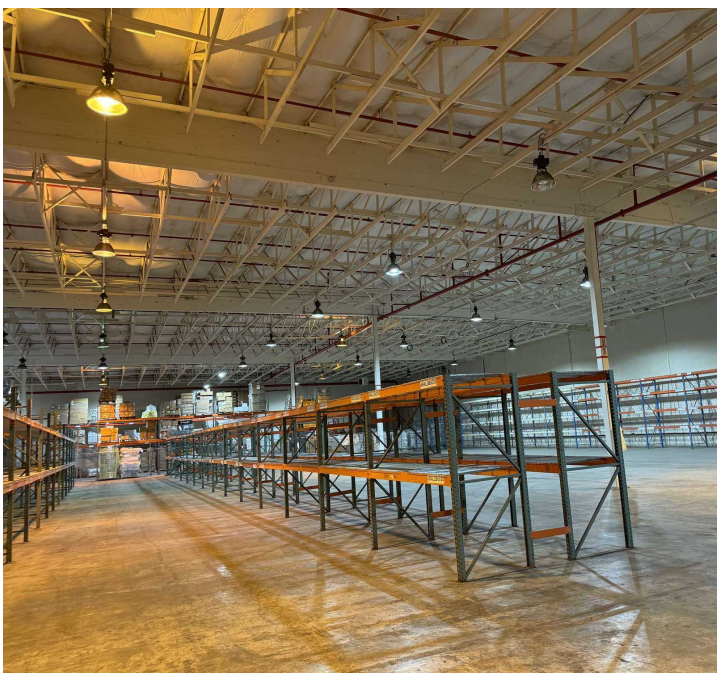
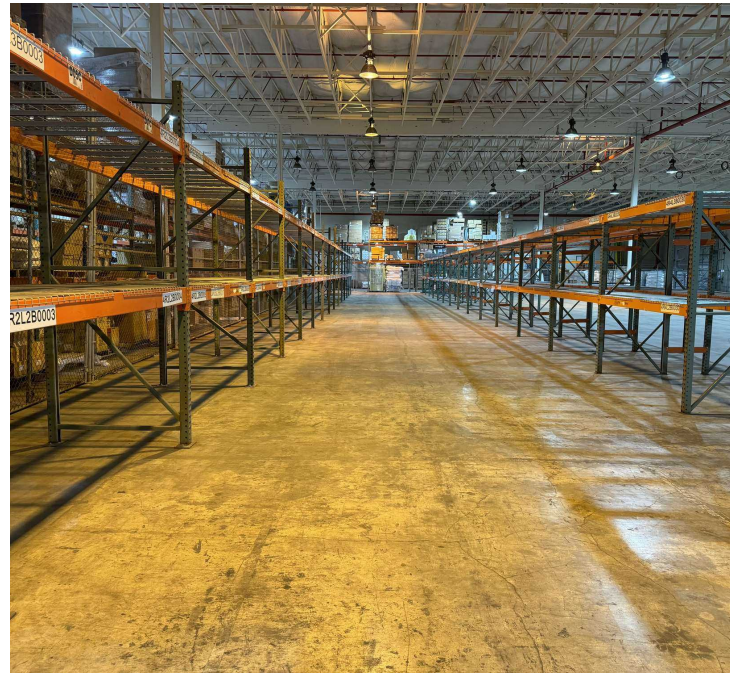
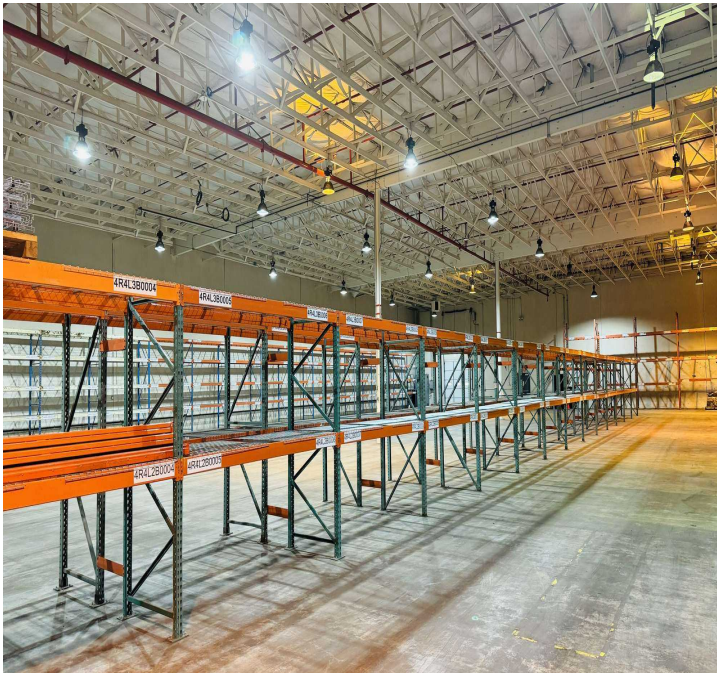
20,000 SF Industrial Property

**LEE &
ASSOCIATES**
COMMERCIAL REAL ESTATE SERVICES

Vanessa Herzog, SIOR, CCIM
vherzog@lee-associates.com
253.444.3020

Justin Froelich
jfroelich@lee-associates.com
253.238.0047

Harrison Laird
hlaird@lee-associates.com
253.238.0044



711 E 11TH STREET

20,000 SF Industrial Property

**LEE &
ASSOCIATES**
COMMERCIAL REAL ESTATE SERVICES

Vanessa Herzog, SIOR, CCIM
vherzog@lee-associates.com
253.444.3020

Justin Froelich
jfroelich@lee-associates.com
253.238.0047

Harrison Laird
hlaird@lee-associates.com
253.238.0044

